



3092 EVERGREEN PARKWAY EVERGREEN, COLORADO 80439



PROPERTY FEATURES

- Prime location in north Evergreen
- Southwestern Adobe Viga-style architecture
- Abundant parking
- Private patios
- Newer carpeting and luxury lighting
- Building exterior signage available

PROPERTY SPECIFICATIONS

Available:	Suite 202	804 RSF
Lease Rate:		\$20.00/RSF MG
Lease Term:		2 - 5 years
Building Size:		5,749 SF
Stories:		Two
Year Built		2007

FOR MORE INFORMATION CONTACT:

RENÉE SPICER

rspicer@gcgcre.com | 720.476.5226

JAMIE MACBETH

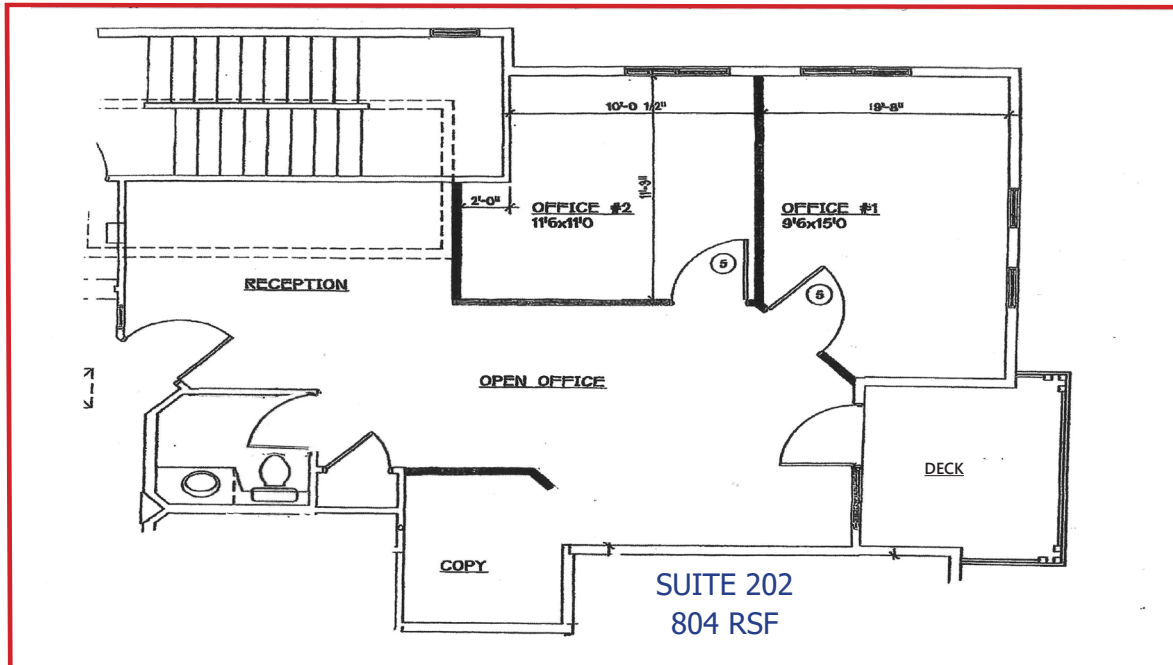
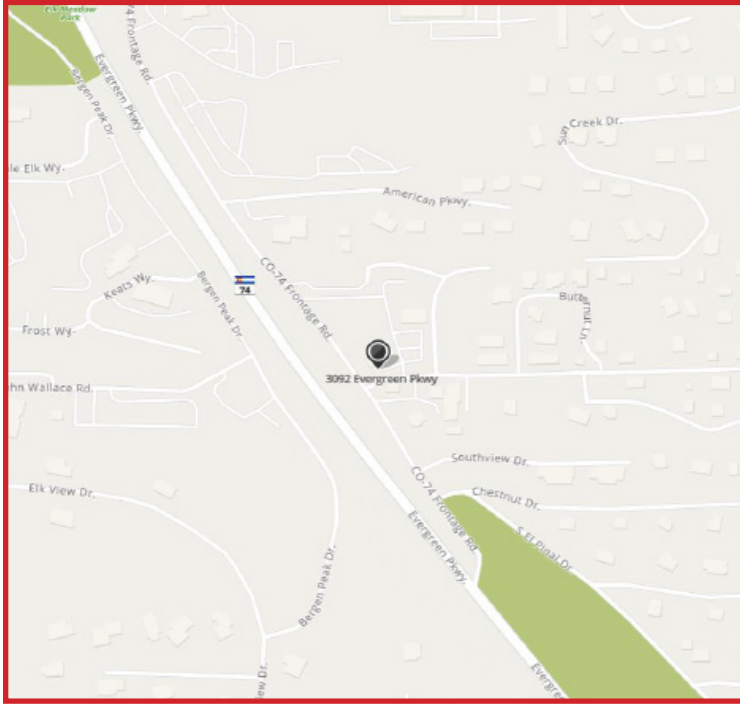
jmacbeth@gcgcre.com | 720.476.5229



**GENESEE
COMMERCIAL
GROUP, LLC**

3092 EVERGREEN PARKWAY

Evergreen, Colorado 80439



No warranty or representation is made as to the accuracy of the foregoing information. Terms of sale or lease and availability are subject to change or withdrawal without notice.

FOR MORE INFORMATION CONTACT:

RENÉE SPICER

rspicer@gcgcre.com | 720.476.5226

JAMIE MACBETH

jmacbeth@gcgcre.com | 720.476.5229