

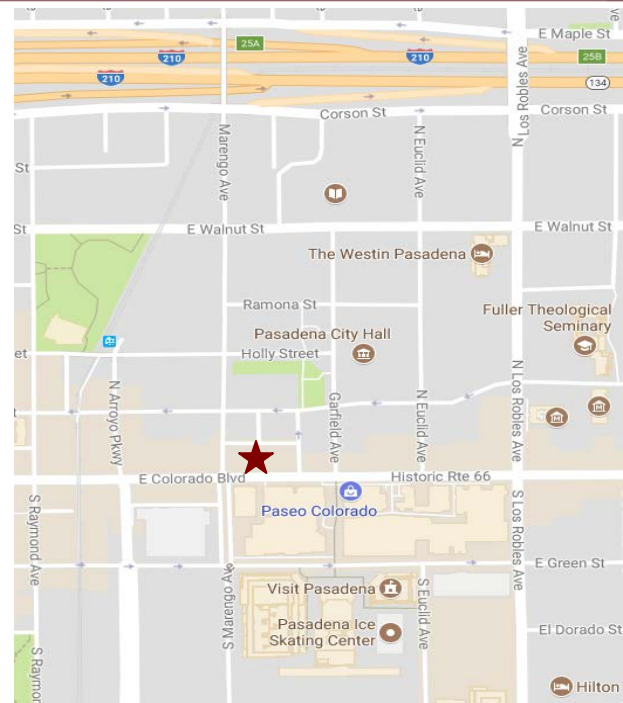
OFFICE SPACE FOR LEASE



241 EAST COLORADO BOULEVARD, PASADENA, CA

FOR LEASE

- AVAILABLE SPACE:** Suite 202 – Approx. 504 sq. ft.
Suite 204 – Approx. 1,223 sq. ft.
- LEASE RATE:** \$2.25 per sq. ft. per month, MG. Tenant pays for its own utilities and interior janitorial.
- AVAILABLE:** Immediately.
- TOTAL BUILDING:** 5,580 sq. ft.
- PARKING:** Off-site parking available in Paseo parking structure at prevailing rate.
- AMENITIES:**
- * Across the street from Paseo Colorado Mall and Convention Center.
 - * Steps away from “Old Town Pasadena” and the “Playhouse District”.
 - * Close proximity to Gold Line stations.
 - * Close proximity to the 110 & 210 freeways.
 - * Beautiful wood floors, numerous windows, and tremendous light.



For Further Information, Contact:

Carole Walker
cwalker@redstonecre.com
License No. 01525534

Dan Alle
dalle@redstonecre.com
License No. 01017941

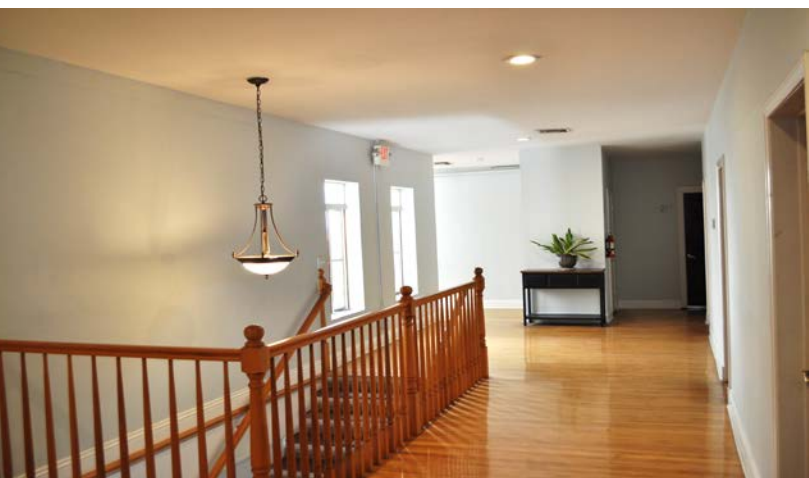
(626) 795-2255

Redstone
COMMERCIAL REAL ESTATE

PLEASE CONTACT THE BROKER FOR AN APPOINTMENT.

All information contained herein is from sources deemed reliable but has not been verified and is submitted without any warranty or representation, expressed or implied, as to its accuracy, and Redstone Commercial Real Estate, License #01525534, assumes no liability for errors or omissions of any kind, change of price, rental or other conditions, including, without limitation, prior sale, lease or financing or withdrawal without notice. This presentation is for information only and under no circumstances whatsoever is to be deemed a contract, note, memorandum or any other form of binding commitment.

241 E. COLORADO BOULEVARD



12' EXHIBIT A 13'-10"

