

6765 DALY ROAD
WEST BLOOMFIELD, MICHIGAN

OFFICE FOR SALE OR LEASE
7,260 Square Feet Available



**SIGNATURE
ASSOCIATES**
KNOW SIGNATURE | KNOW RESULTS

OFFICE BUILDING



PROPERTY FEATURES

- 7,260 square feet available
- Stand-alone office condo available
- Open concept with modern finishes
- Bright and airy space with high ceilings
- Possible plug-n-play with some furniture available
- Lease Rate: See Listing Broker
- Sale Price: \$1,150,000 (\$158.40/sq.ft.)



For more information, please contact:

JASON STOUGH
(248) 948 4180

jstough@signatureassociates.com

JIM MONTGOMERY
(248) 359 0614

jmontgomery@signatureassociates.com

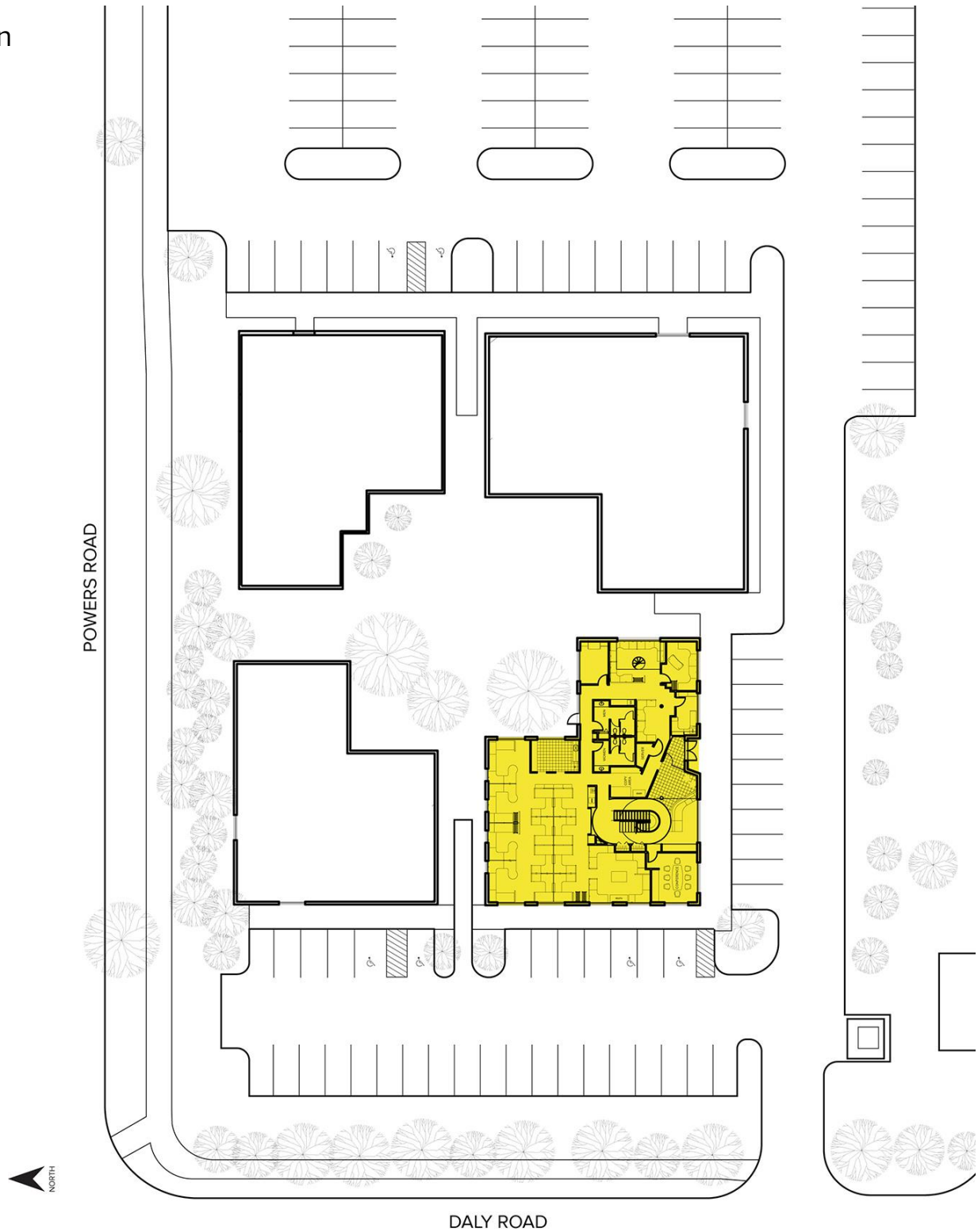
SIGNATURE ASSOCIATES
One Towne Square, Suite 1200
Southfield, MI 48076
www.signatureassociates.com

6765 Daly Road – West Bloomfield, Michigan

Office For Sale or Lease

7,260
Square Feet
AVAILABLE

Site Plan



For more information, please contact:

JASON STOUGH

(248) 948 4180

jstough@signatureassociates.com

JIM MONTGOMERY

(248) 359 0614

jmontgomery@signatureassociates.com

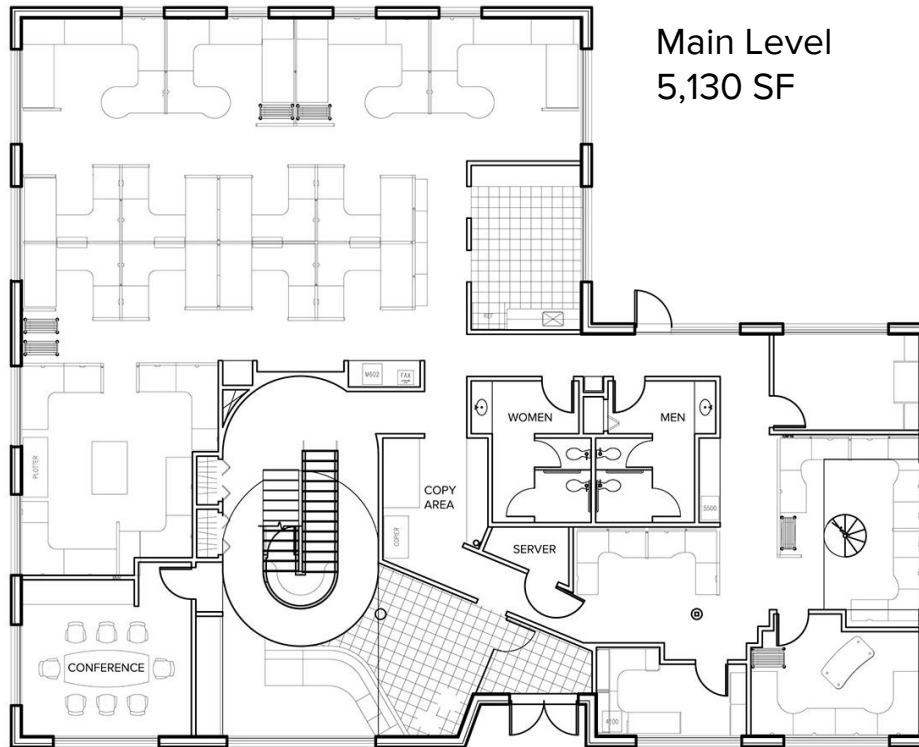
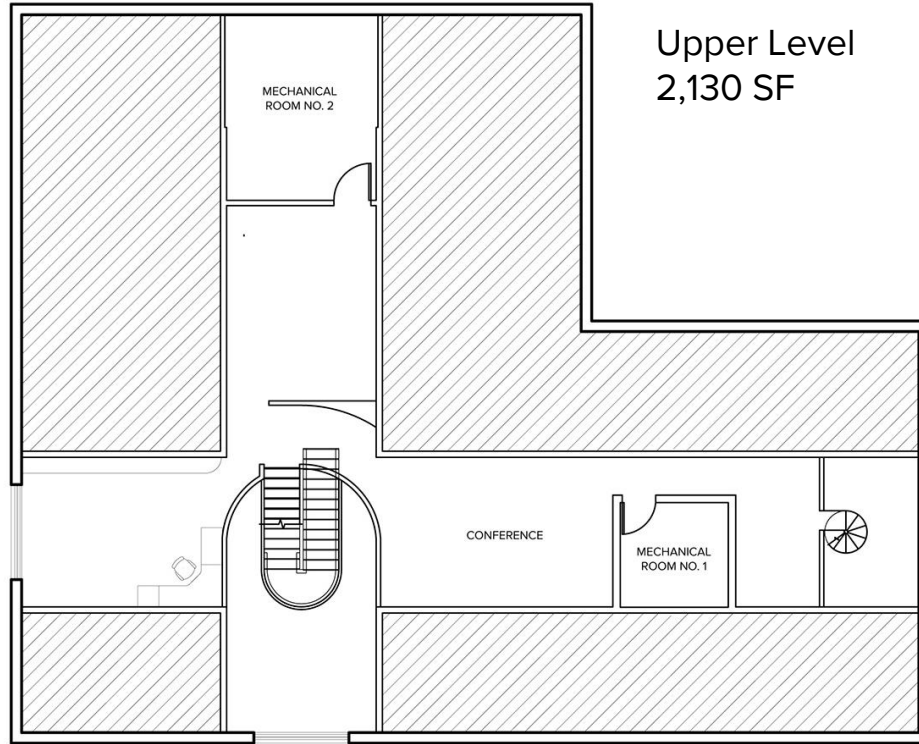
SIGNATURE ASSOCIATES

One Towne Square, Suite 1200

Southfield, MI 48076

www.signatureassociates.com

Floor Plans



For more information, please contact:

JASON STOUGH

(248) 948 4180

jstough@signatureassociates.com

JIM MONTGOMERY

(248) 359 0614

jmontgomery@signatureassociates.com

SIGNATURE ASSOCIATES

One Towne Square, Suite 1200

Southfield, MI 48076

www.signatureassociates.com

6765 Daly Road – West Bloomfield, Michigan

Office For Sale or Lease

7,260
Square Feet
AVAILABLE

Aerials



For more information, please contact:

JASON STOUGH

(248) 948 4180

jstough@signatureassociates.com

JIM MONTGOMERY

(248) 359 0614

jmontgomery@signatureassociates.com

SIGNATURE ASSOCIATES

One Towne Square, Suite 1200

Southfield, MI 48076

www.signatureassociates.com