



**MILL CREEK
OFFICE PARK**
16000 Bothell-Everett Hwy
Mill Creek, WA 98012

FOR LEASE

Various Small Office Spaces
From 700 - 1,300 RSF

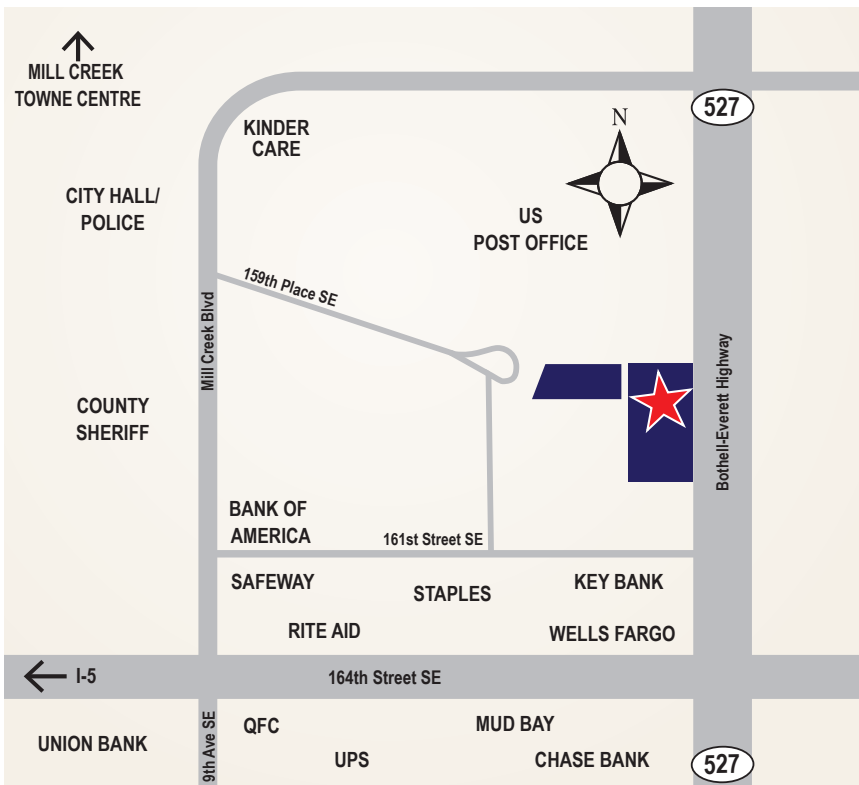
FEATURES:

- 3 Story Building
- Elevator
- 2 Stairwells
- 185 Parking Spaces

LEASE RATE:

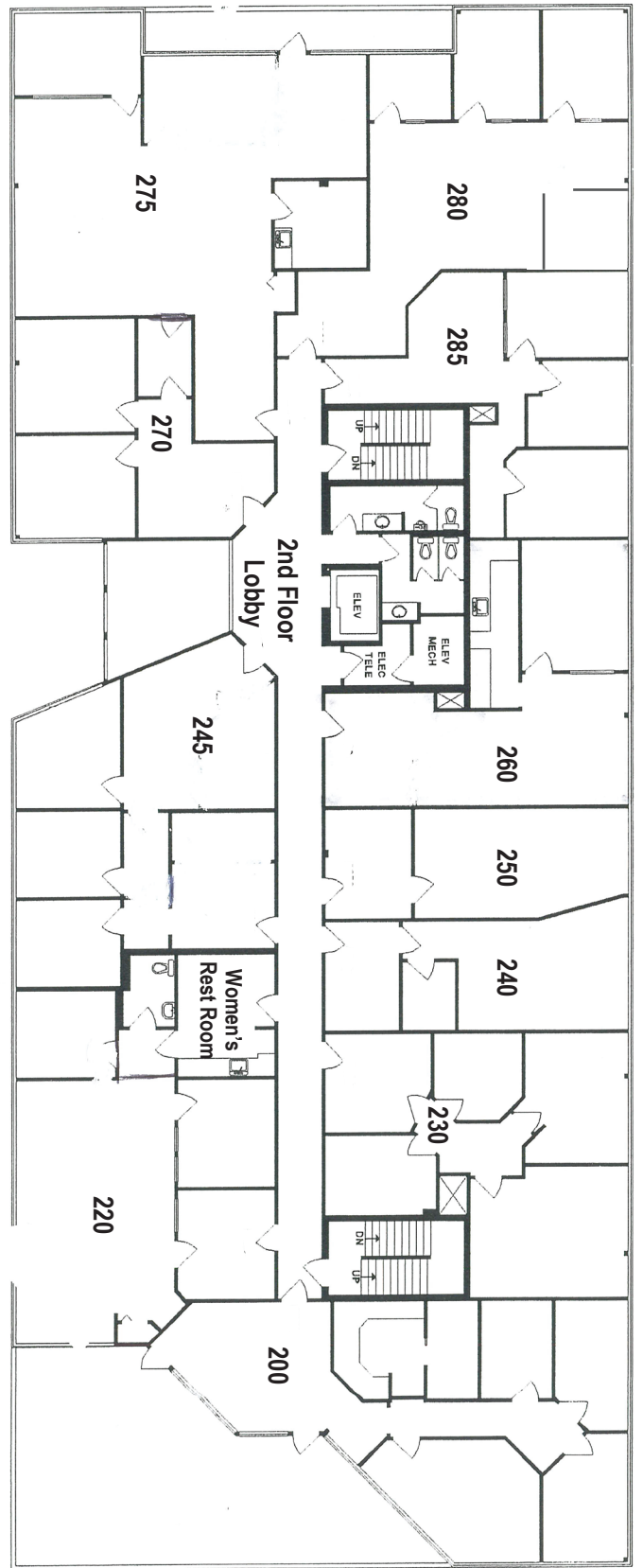
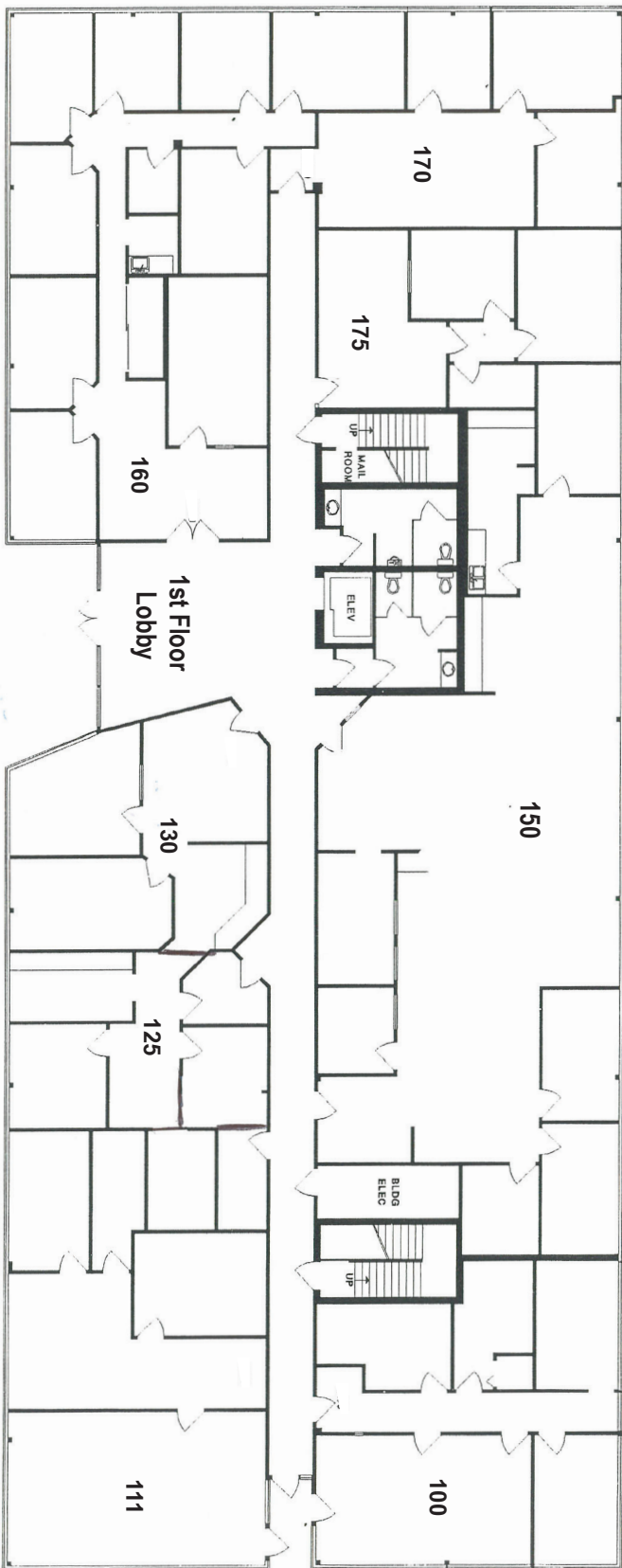
\$21 - \$23 PSF
NNN \$10.60 PSF

Includes Property Taxes, Insurance,
Cam's; Water/Sewer, Electrical, Janitorial



IMPERIAL CPM, LLC
Commercial Real Estate Brokerage

Rusty Fancher
DESIGNATED & MANAGING BROKER
206-909-9321



IMPERIAL CPM, LLC
Commercial Real Estate Brokerage

Map and floor plan not to scale. The information contained in this document has been obtained from sources believed reliable. While IMPERIAL CPM, LLC does not doubt its accuracy, IMPERIAL CPM, LLC has not verified it and makes no guarantee, warranty or representation about it. It is your responsibility to independently confirm its accuracy and completeness. Any projections, opinions, assumptions or estimates used are for example only and do not represent the current or future performance of the property. Photos herein are the property of their respective owners and use of these images without the express written consent of the owner is prohibited.