

# 47.65 ACRES OF AGRICULTURAL LAND

Domenigoni Parkway & State Street - Hemet, CA

**FOR SALE: \$1,195,000**

- **City of Hemet**
- **Zoned A-10 - Heavy Agricultural**



# 47.65 ACRES OF AGRICULTURAL LAND

Domenigoni Parkway & State Street - Hemet, CA

## TABLE OF CONTENTS

PAGE	CONTENT
3	AERIALS
5	LOCATION MAP
6	PROPERTY INFORMATION
7	PLAT MAP

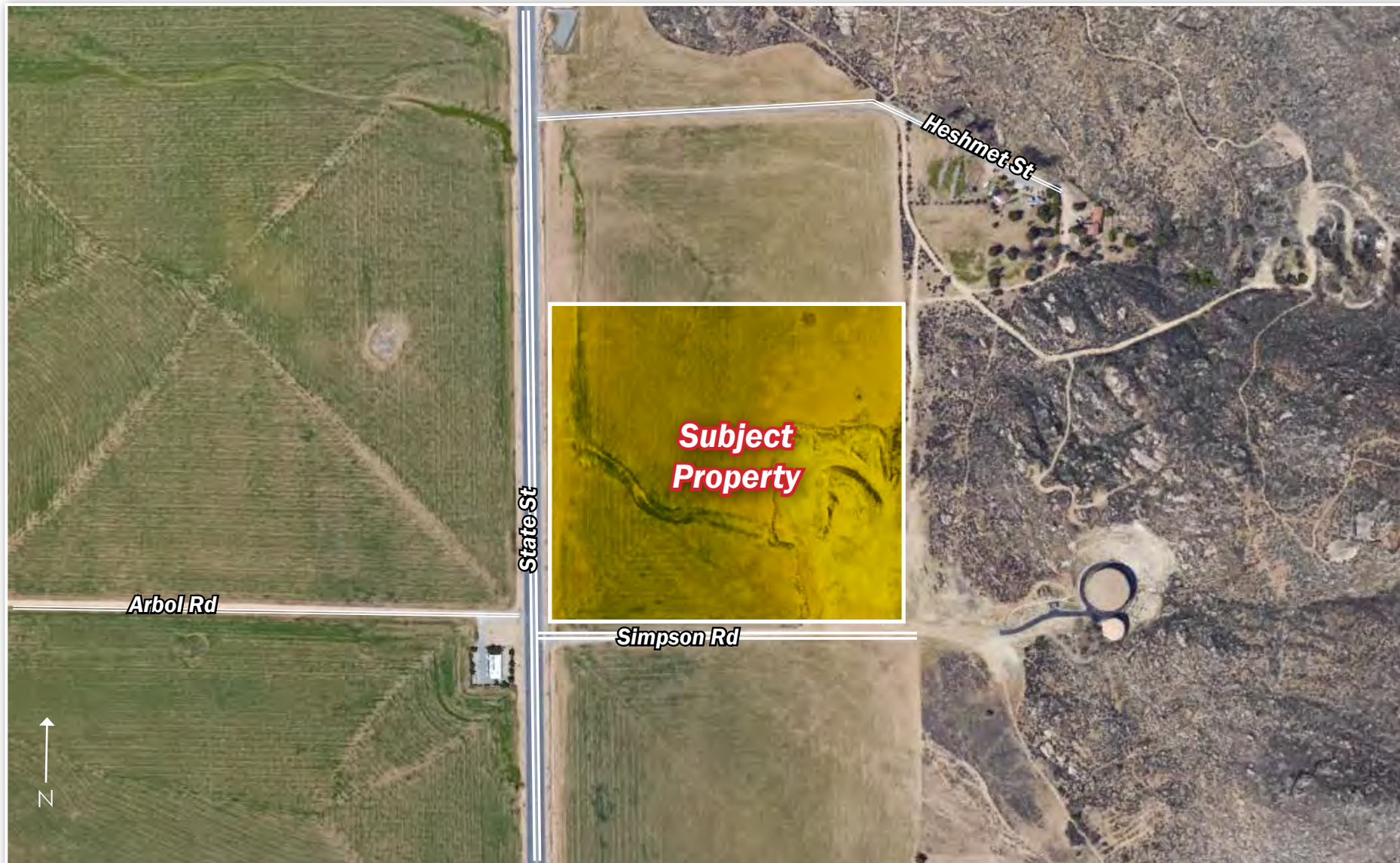


*No warranty or representation is made to the accuracy of the foregoing information. Terms of sale, lease and availability are subject to change or withdrawal without notice.*

# 47.65 ACRES OF AGRICULTURAL LAND

Domenigoni Parkway & State Street - Hemet, CA

AERIALS



# 47.65 ACRES OF AGRICULTURAL LAND

Domenigoni Parkway & State Street - Hemet, CA

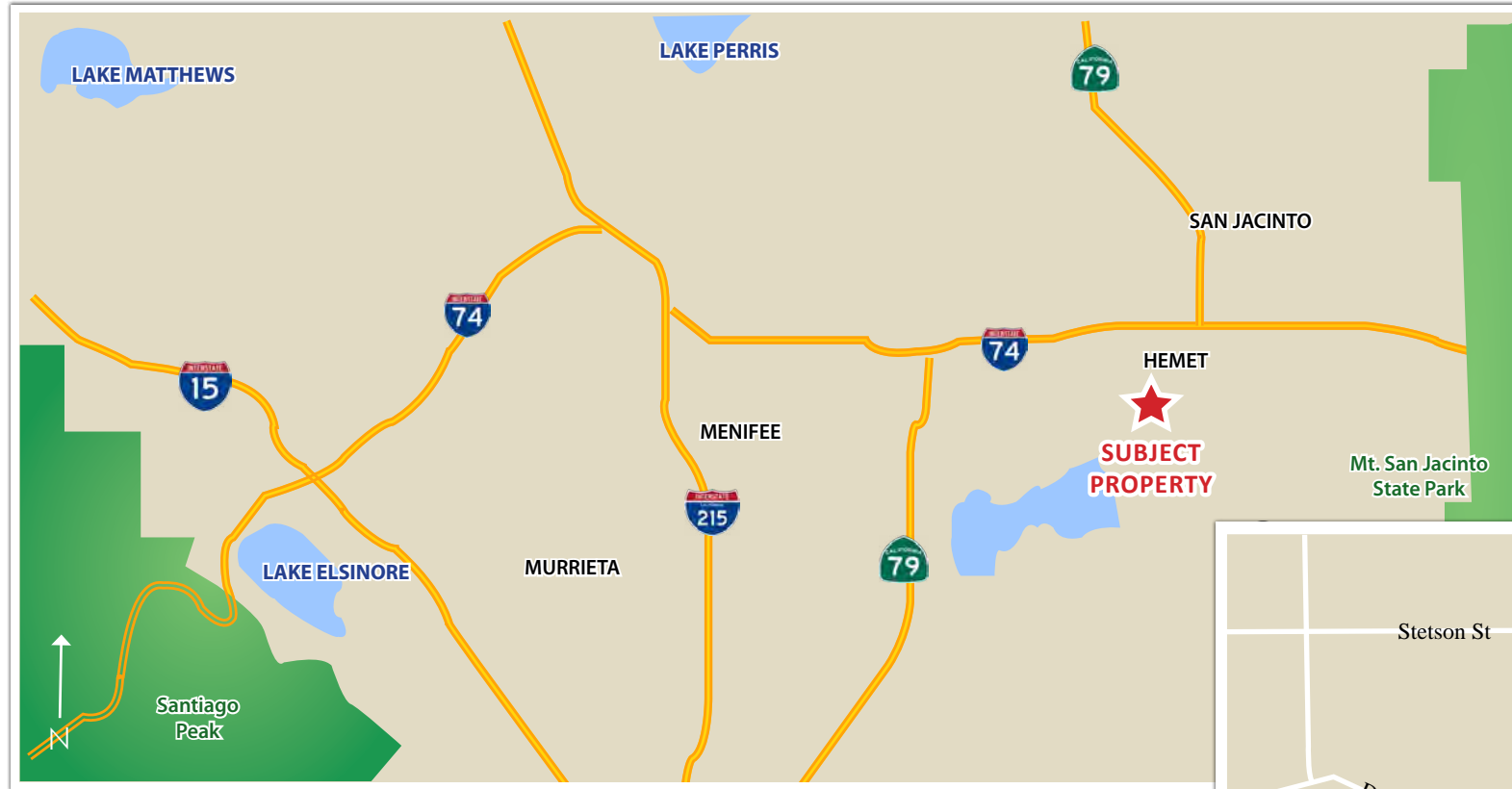
AERIALS



# 47.65 ACRES OF AGRICULTURAL LAND

Domenigoni Parkway & State Street - Hemet, CA

LOCATION MAP



# 47.65 ACRES OF AGRICULTURAL LAND

Domenigoni Parkway & State Street - Hemet, CA

PROPERTY INFORMATION

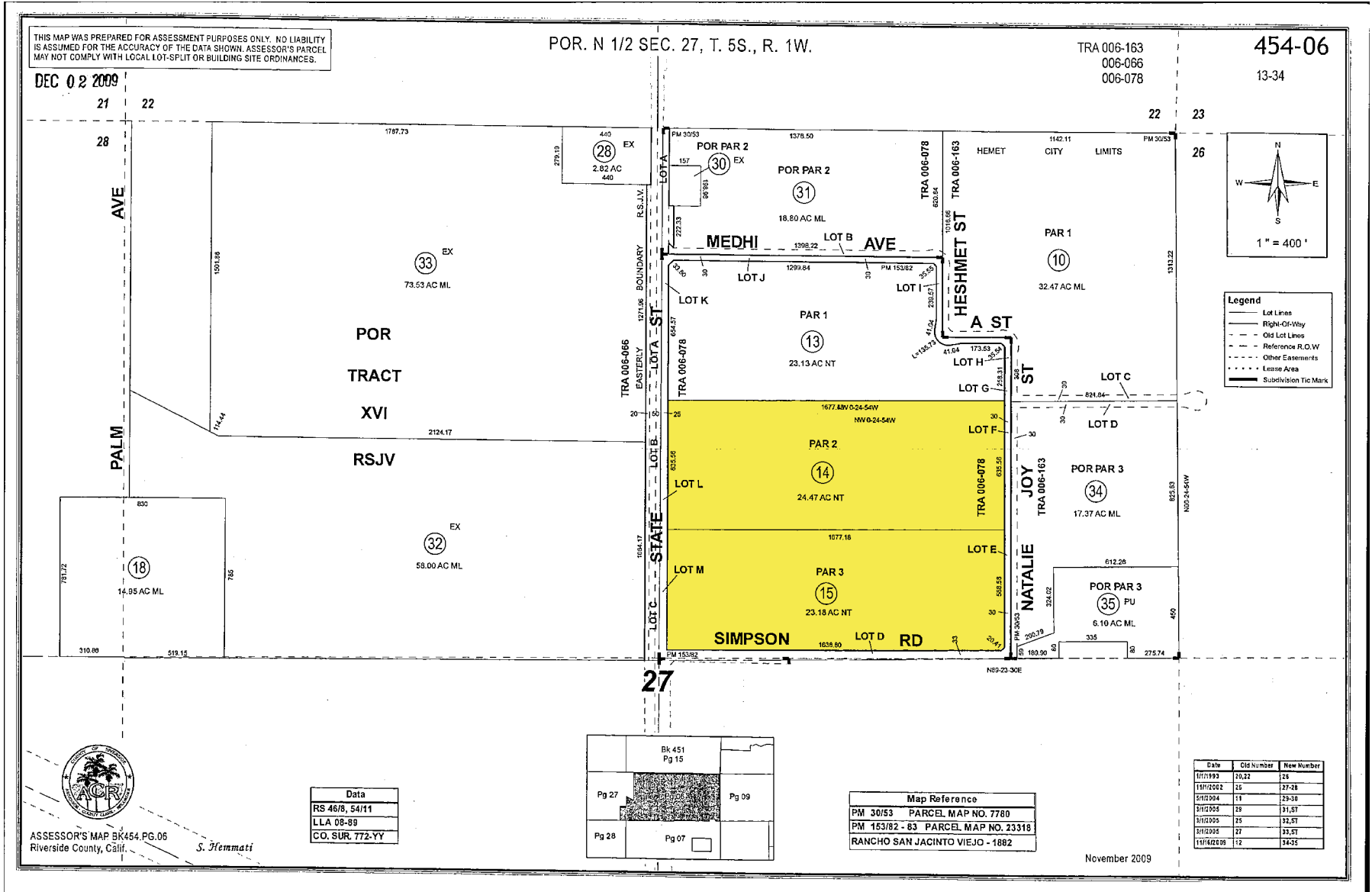
- Location:** The property is located in the City of Hemet in the County of Riverside. The site is positioned on Domenigoni Parkway and State Street and has excellent visibility on State Street. The site is ideal for an agricultural use.
- Jurisdiction:** City of Hemet
- APN:** 454-060-014 & 015
- Land Size:** 47.65 Acres
- Zoning:** A-10 - Heavy Agricultural - 10 Acre Min.  
[Click here to view zoning](#)
- Topography:** Flat
- Utilities:** Water available to the property
- Services:**
- |          |                                       |
|----------|---------------------------------------|
| Water    | Eastern Municipal Water District      |
| Electric | Southern California Edison            |
| Gas      | Southern California Gas Company       |
| Fire     | Riverside County Fire Department      |
| Police   | Riverside County Sheriff's Department |
- Price:** **\$1,195,000**



# 47.65 ACRES OF AGRICULTURAL LAND

Domenigoni Parkway & State Street - Hemet, CA

PLAT MAP



# 47.65 ACRES OF AGRICULTURAL LAND

Domenigoni Parkway & State Street - Hemet, CA

For More Information, Please Contact:

JEFF RUSCIGNO  
951-276-3630  
jruscigno@lee-associates.com

MATT WEAVER  
760.448.2458  
mweaver@lee-associates.com

AL APUZZO  
760.448.2442  
aapuzzo@lee-associates.com

