

VANTAGE PLAZA

1935 East Vine Street, Murray, Utah 84121

VANTAGE PLAZA

1935 East Vine Street, Murray, Utah 84121



FOR LEASE

\$21.00 PSF FULL SERVICE

PROPERTY FEATURES

- 1,118 – 2,550 RSF Available
- Available 4/1,000 Parking with Additional Shared Parking
- Numerous Amenities Nearby
- Less than 1 Minute from I-215
- Professional On-Site Management
- Utopia and Fiber Available

FOR MORE
INFORMATION
CONTACT

CASEY MILLS, CCIM, SIOR
801.578.5556
casey.mills@ngkf.com

COLLIN PERKINS, MBA
801.578.5575
collin.perkins@ngkf.com

DEREK SAWAYA
801.746.4730
derek.sawaya@ngkf.com



376 East 400 South, Suite 120 | Salt Lake City, Utah 84111 | 801.578.5555 | www.ngacres.com

This document has been prepared by Newmark Knight Frank for advertising and general information purposes only. While the information contained herein has been obtained from what are believed to be reliable sources, the same has not been verified for accuracy or completeness. Newmark Knight Frank accepts no responsibility or liability for the information contained in this document. Any interested party should conduct an independent investigation to verify the information contained herein.



376 East 400 South, Suite 120 | Salt Lake City, Utah 84111 | 801.578.5555 | www.ngacres.com

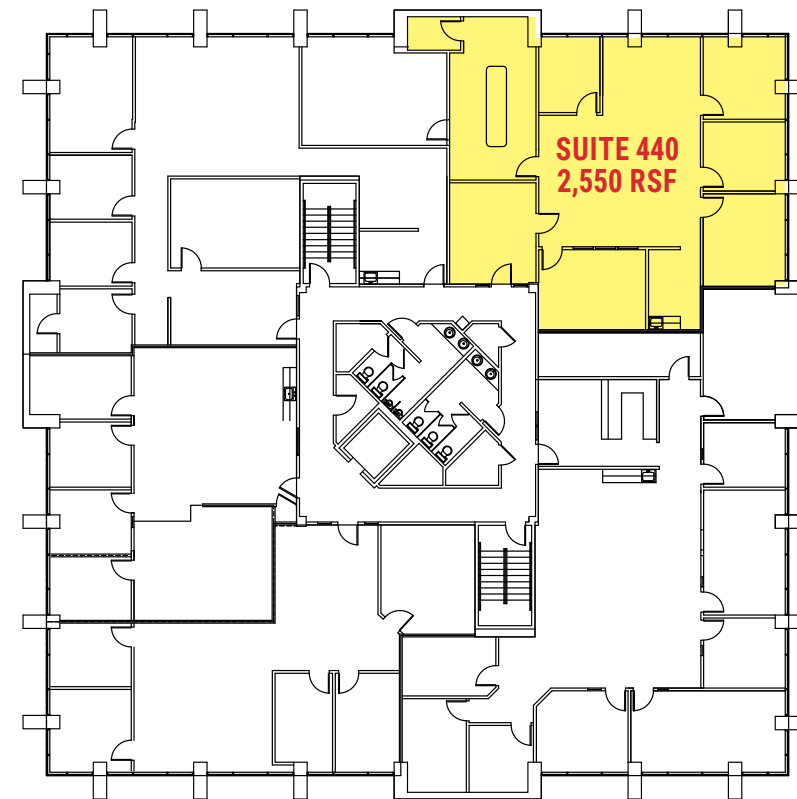
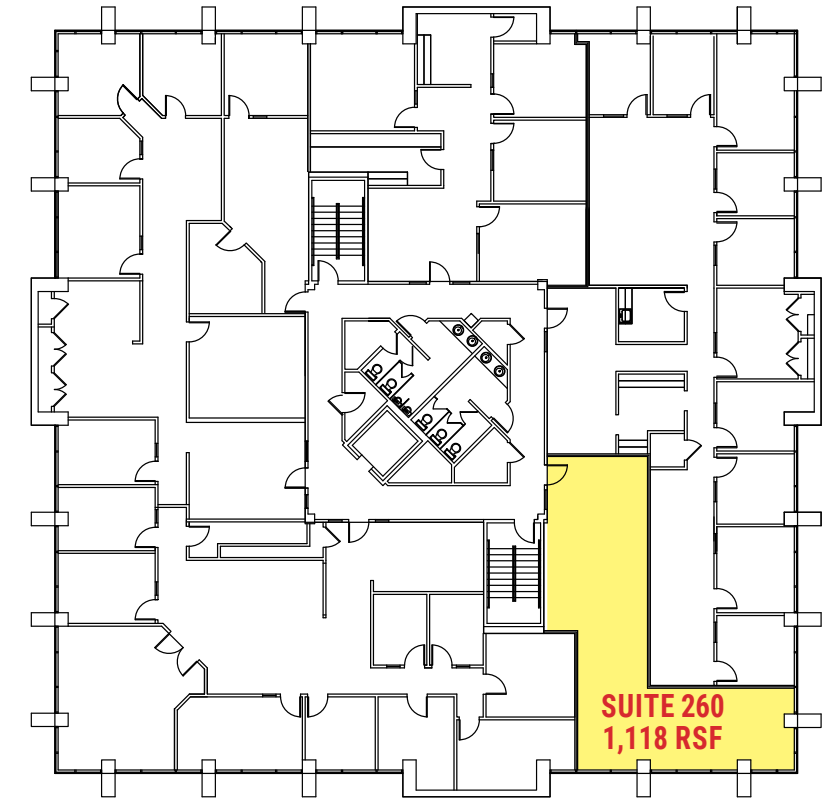
This document has been prepared by Newmark Knight Frank for advertising and general information purposes only. While the information contained herein has been obtained from what are believed to be reliable sources, the same has not been verified for accuracy or completeness. Newmark Knight Frank accepts no responsibility or liability for the information contained in this document. Any interested party should conduct an independent investigation to verify the information contained herein.

VANTAGE PLAZA

1935 East Vine Street, Murray, Utah 84121



SECOND FLOOR



FOURTH FLOOR