

FOR SALE

EAST 10TH STREET COMMERCIAL LOT

0.95-Acre Prime Retail Lot For Sale



1750 East 10th Street
Sioux Falls, SD 57103



size

0.95 acre for sale



price

~~\$16.00 per square foot~~
\$14.50 per square foot



access

Site has full access approach to East 10th Street!



location

Prime commercial lot located on East 10th Street

(1/2 mile west of Interstate 229, 1 mile east of Downtown Sioux Falls)



traffic

21,200 cars per day



co-tenancy

Taco Johns, Burger King, Popeyes Louisiana Kitchen, Casey's General Store, Qdoba, Puerto Vallarta, Downtown Sioux Falls

Information deemed reliable but not guaranteed.



Lake Lorraine | 2571 Westlake Drive #100
Sioux Falls, South Dakota 57106
VBCLink.com | 605.361.8211

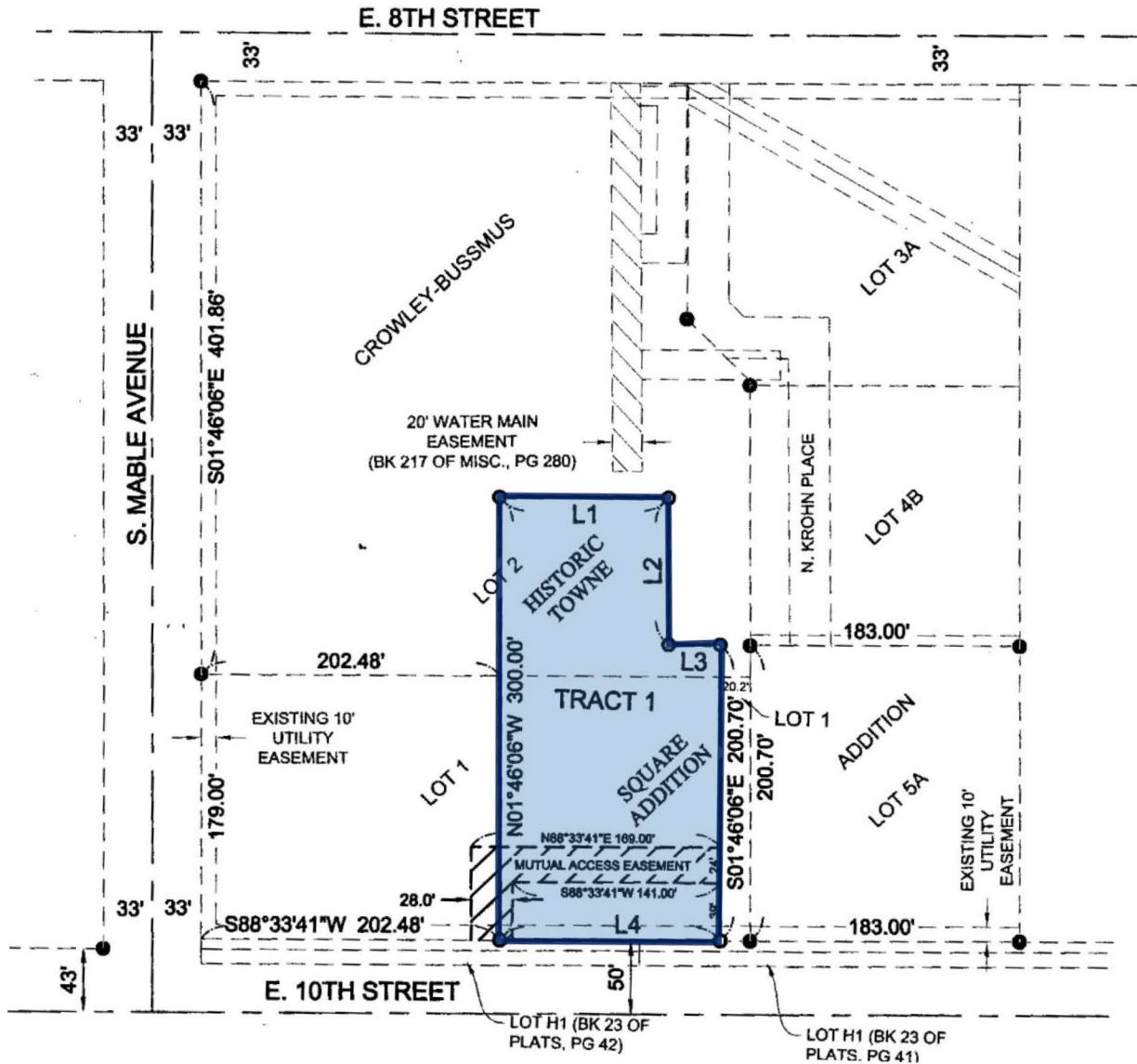


605.376.0127
Ryan@VBCLink.com



0.95-acre lot available in the heart of the bustling thoroughfare of East 10th Street.
 Site is located less than 1/2 mile from Interstate 229.
 East 10th Traffic Counts: 21,200 cars per day!

TRACT 1 HISTORIC TOWNE SQUARE ADDITION TO THE CITY OF SIOUX FALLS, MINNEHAHA COUNTY, SOUTH DAKOTA



1750 East 10th Street, Sioux Falls
0.95 acre