



EXECUTIVE OFFICES/ CO-WORKING SPACE FOR LEASE

GOLF CORPORATE CENTER 415 W. GOLF ROAD, ARLINGTON HEIGHTS, IL



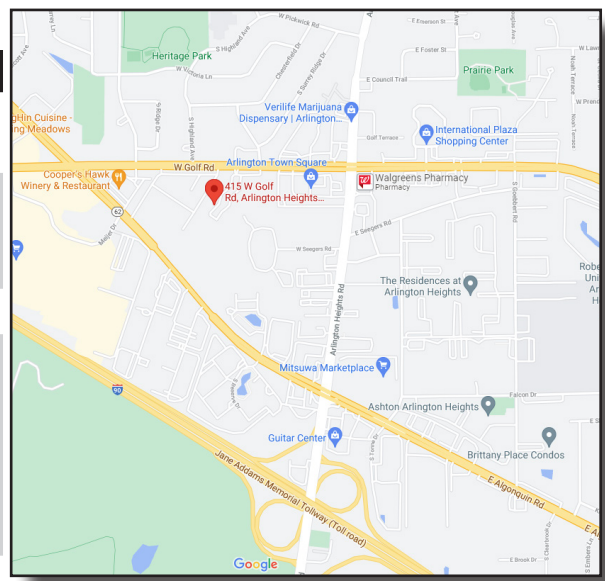
All Inclusive Office Space/Co-Working Spaces!
Includes Utilities & Comcast Wi-Fi Internet!!

BUILDING FEATURES:

- Suite 55 All Inclusive Office Space/Co-Work Space
 -Rent Includes all utilities & Comcast Wi-Fi Internet
 -200-1,000 SF Available
- 24 hour access with private suite entry
- Zoned M-2
- High End Finishes with upgrades throughout
- Access to Shared Reception, Kitchen Area & restrooms
- Comcast High Speed Internet & Utilities Included!!
- Minutes from Rt. 53 or I-90
- Move in ready suites ready for immediate occupancy
- Located near intersection of Golf Rd & Algonquin Rd
- Most Offices have floor to ceiling exterior windows!!
- Walking distance to restaurants & hotels
- Fedex & UPS drop boxes on site
- Professional Property management
- 3-D Virtual Tours of select suites can be found at:
www.chicagolandcommercial.com

AVAILABLE SPACE:

| SUITE | SIZE (SF) | AVAILABLE |
|-------------------|------------------|--|
| 14 -A | 385 SF | All Inclusive-\$475 Per Month |
| 22-D | 225 SF | 1 office w/ window \$425 Per month |
| Suite 55 | Various SF | Includes Utilities & Wi-Fi |
| 55 A-N * | 250- 4,000 SF SF | New Model Executive Sutes |
| 59 B* | 200 SF | *New Model Mini Suites |
| 59- F* | 225 SF | *\$395 Includes Utilities & Wi-Fi |
| | | *\$425 Includes Utilities & Wi-Fi |
| *Executive Suites | 175-1,000 SF | See page (5) For Complete List of Suites |



*INCLUDES GAS, ELECTRIC & COMCAST WI-FI INTERNET

FOR MORE INFORMATION:

RANDY OLCZYK
 Direct: 847.246.9611
randy@chicagolandcommercial.com
 LEASING | SALES | TENANT ADVISORY | MANAGEMENT

RAY OKIGAWA
 Direct: 847.246.9632
Ray@chicagolandcommercial.com



4811 Enerson Ave Suite 112., Palatine, IL
www.chicagolandcommercial.com



EXECUTIVE OFFICES/ CO-WORKING SPACE FOR LEASE

GOLF CORPORATE CENTER 415 W. GOLF ROAD, ARLINGTON HEIGHTS, IL

SUITE 55 ALL INCLUSIVE EXECUTIVE OFFICE SPACES /CO-WORKING SPACE (175-900 SF)

COMMON RECEPTION &
KITCHEN AREA WITH PRIVATE
ENTRANCES!!

Rent Includes All Utilities & Comcast
Wi-Fi Internet Access!!!





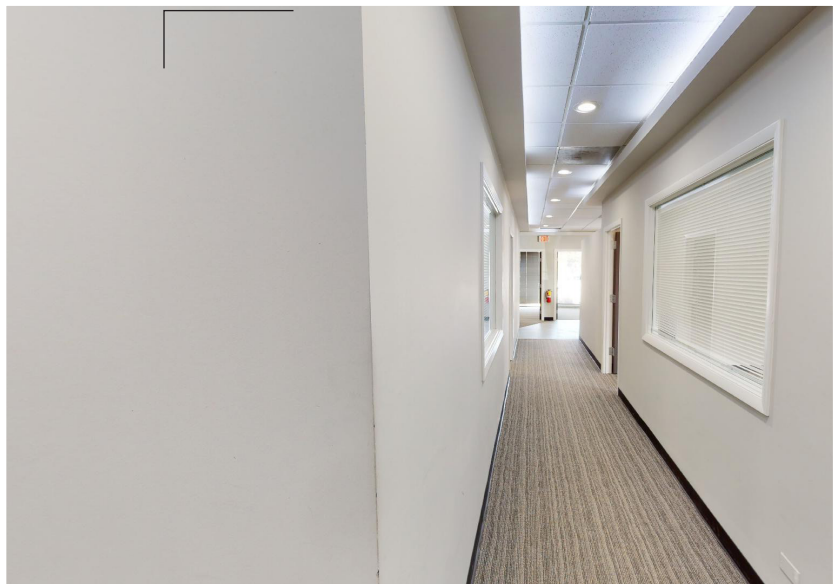
EXECUTIVE OFFICES/ CO-WORKING SPACE FOR LEASE

GOLF CORPORATE CENTER 415 W. GOLF ROAD, ARLINGTON HEIGHTS, IL

SUITE 55 ALL INCLUSIVE EXECUTIVE OFFICE SPACES /CO-WORKING SPACE (175-900 SF)

COMMON RECEPTION &
KITCHEN AREA WITH PRIVATE
ENTRANCES!!

Rent Includes All Utilities & Comcast
Wi-Fi Internet Access!!!





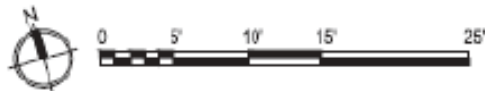
EXECUTIVE OFFICES/ CO-WORKING SPACE FOR LEASE

GOLF CORPORATE CENTER 415 W. GOLF ROAD, ARLINGTON HEIGHTS, IL

EXECUTIVE SUITES (200-850 SF)- SUITES 55

RENTS INCLUDE : ALL UTILITIES & COMCAST WI-FI INTERNET ACCESS

Golf Corporate Center
Suite 55 Mini-Suites
415 W. Golf Rd, Arlington Heights, IL 60005



4/17/23



Rents for Suites 55-A through 55-N include heat, AC, & electricity
Tenants have 24/7 access.
Comcast WiFi included in rent



EXECUTIVE OFFICES/ CO-WORKING SPACE FOR LEASE

GOLF CORPORATE CENTER 415 W. GOLF ROAD, ARLINGTON HEIGHTS, IL

EXECUTIVE SUITES (200-850 SF)- SUITES 55

RENTS INCLUDE : ALL UTILITIES & COMCAST WI-FI INTERNET ACCESS



**Golf Corporate Center
Suite 55
Available Spaces for Lease**

All spaces feature:

- Professional park-like setting
- Excellent parking access
- Access to shared kitchen
- 24/7 access to suites
- Electricity, heat, and AC included in rental rate
- Comcast WiFi internet access included in rental rate
- Good access to I-90 via Arlington Heights Rd interchange and Route 53.
- Zoned M-2

| Suite | Dimensions | Approx. SF | Monthly Gross Rent | |
|-------|------------|------------|--------------------|-----------------|
| 55-A | 11' x 16' | 176 | \$475 | Exterior window |
| 55-B | 11' x 11' | 121 | \$425 | Exterior window |
| 55-C | 11' x 11' | 121 | \$425 | Exterior window |
| 55-D | 12' x 15' | 180 | \$425 | Exterior window |
| 55-E | 15' x 15' | 225 | \$475 | Exterior window |
| 55-F | 11' x 22' | 242 | \$675 | Exterior window |
| 55-G | 11' x 13' | 143 | \$425 | Exterior window |
| 55-H | 11' x 13' | 143 | \$425 | Exterior window |
| 55-I | 11' x 13' | 143 | \$425 | Exterior window |
| 55-J | 14' x 27' | 378 | \$675 | Interior room |
| 55-L | 8' x 8' | 64 | \$300 | Interior room |
| 55-M | 8' x 8' | 64 | \$300 | Interior room |
| 55-N | 8' x 21' | 88 | \$500 | Interior room |

COMMON RECEPTION & KITCHEN AREAS!

PRIVATE SUITE ENTRANCES!!

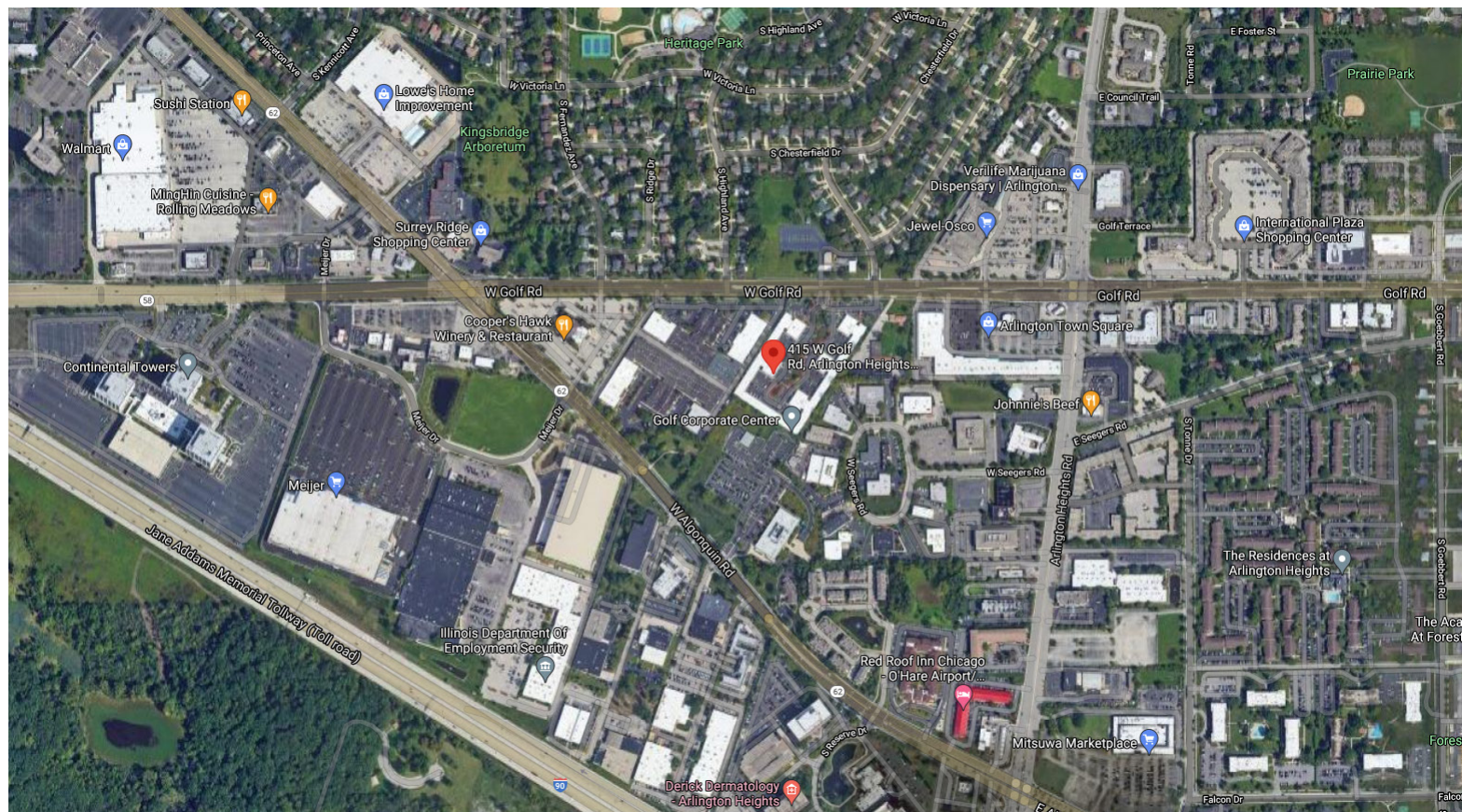
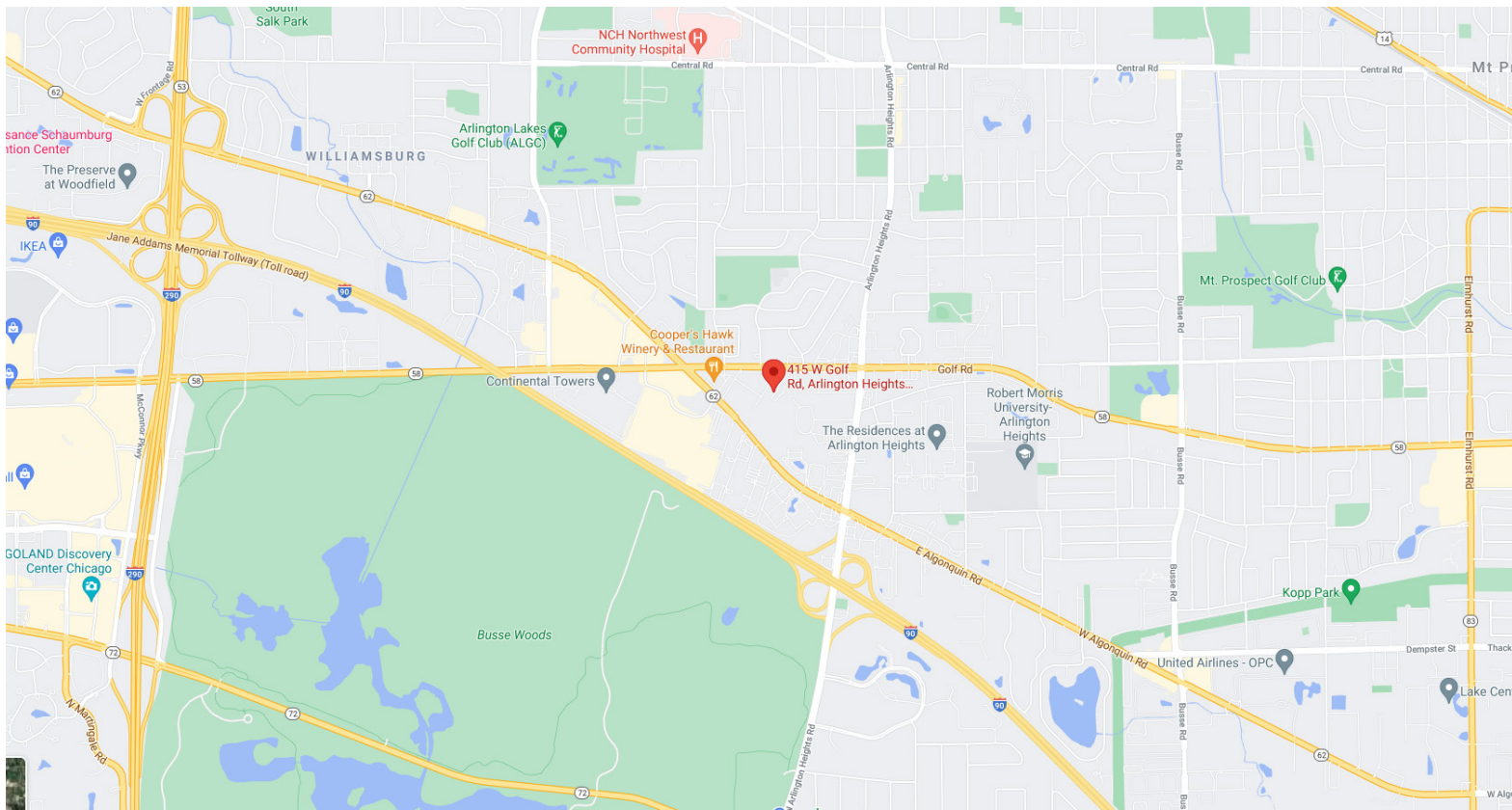
*****Rent Includes All Utilities & Comcast Wi-Fi Internet Access!!!*****



EXECUTIVE OFFICES/ CO-WORKING SPACE FOR LEASE

GOLF CORPORATE CENTER 415 W. GOLF ROAD, ARLINGTON HEIGHTS, IL

LOCATION & AERIAL MAPS



Brokers of Chicagoland Commercial, Inc. have a minority ownership interest in the property. Information contained herein has been obtained from the owners of the property or from other sources that we deem reliable. We have no reason to doubt its accuracy, but do not guarantee it.



EXECUTIVE OFFICES/ CO-WORKING SPACE FOR LEASE

GOLF CORPORATE CENTER 415 W. GOLF ROAD, ARLINGTON HEIGHTS, IL

DRONE AERIAL PHOTO



Brokers of Chicagoland Commercial, Inc. have a minority ownership interest in the property. Information contained herein has been obtained from the owners of the property or from other sources that we deem reliable. We have no reason to doubt its accuracy, but do not guarantee it.