



PROPERTY FEATURES

- Located in Binghamton's busiest commercial corridor on the corner of Court Street
- First-floor retail space located within a student housing complex fully renovated historic buildings
- Spacious offices, with a modern look and design
- Walking distance to downtown restaurants, government offices, and retail
- On street parking in front of building on Court Street in addition to the parking ramp



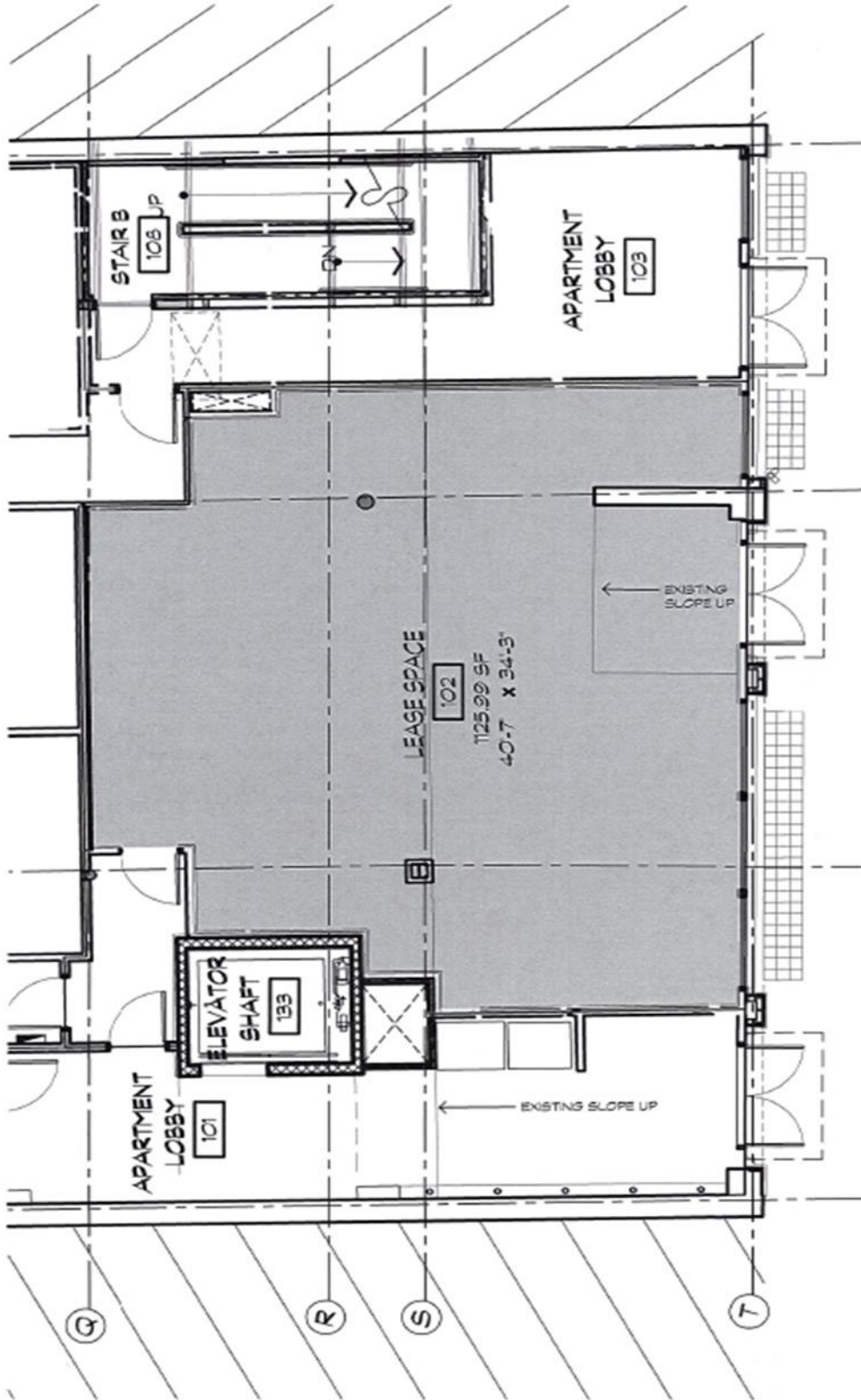
DETAILS	
AVAILABLE SPACE	1,126SF 85 Court Street
TAX ID	160.41-1-16
LEASE RATE	\$14.00/SF Gross
ZONING	Downtown Commercial

For more information, please contact:

Maureen D. Wilson, CCIM, SIOR
 President; Real Estate Broker
 +1 607-754-5990 x 323
Mwilson@pyramidbrokerage.com

Jeffrey Sabitus
 Real Estate Salesperson
 +1 607-754-5990 x 318
Jsabitus@pyramidbrokerage.com

84 Court Street, Suite 300
 Binghamton, New York 13901
 phone: +1 607 754 5990
pyramidbrokerage.com



1 COURT STREET LEASE SPACE A

SK014 1/8" = 1'-0"