



VALUE INDUSTRIAL PARTNERS, LLC

Industrial Real Estate Investment, Brokerage and Management

970 N. Oaklawn Avenue, Elmhurst, Illinois 60126 TEL: 630-333-1900 FAX: 630-333-1910



**12348 S. Latrobe Avenue
Alsip, Illinois**

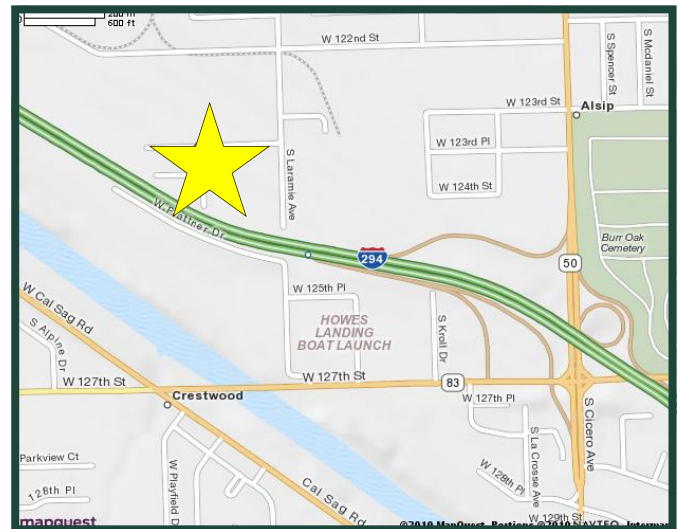
**FOR LEASE
6,080 SF**

Building Specifications

Available Size:	6,080 Square Feet
Building Size:	85,390 Square Feet
Office:	15%
Ceiling Height:	16'
Loading:	1 Exterior Dock 1 Drive-in Door
Power:	200 Amps
Heat:	Gas
Zoning:	Industrial
Real Estate Taxes:	Included with Current Stop
Operating Expenses:	Included with Current Stop
Lease Rate:	\$8.25 PSF Gross

Comments

- Professionally owned and managed
- Great location with I-294 visibility
- Minutes to full I-294 interchange at Cicero Avenue



For Further Information, Please Contact:

Brian M. Liston, Principal
bliston@valueindustrialpartners.com

Brian P. Gedvilas, Director of Leasing
bgedvilas@valueindustrialpartners.com

TEL: 630-333-1900 FAX: 630-333-1910

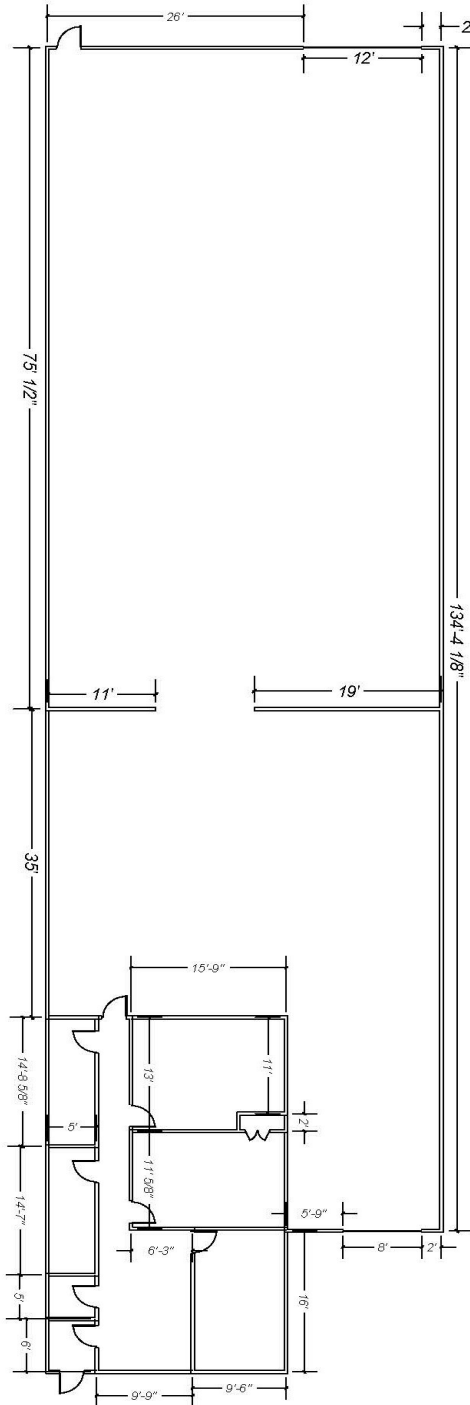


VALUE INDUSTRIAL PARTNERS, LLC

Industrial Real Estate Investment, Brokerage and Management

970 N. Oaklawn Avenue, Elmhurst, Illinois 60126 TEL: 630-333-1900 FAX: 630-333-1910

LAYOUT



FOR ILLUSTRATION PURPOSES ONLY. DIMENSIONS TO BE CONFIRMED.

Officers of the firm have an ownership interest in this property.
Submitted subject to error, change in status, or withdrawal without notice.