

CityPlace 1

±46,831 RSF for Lease

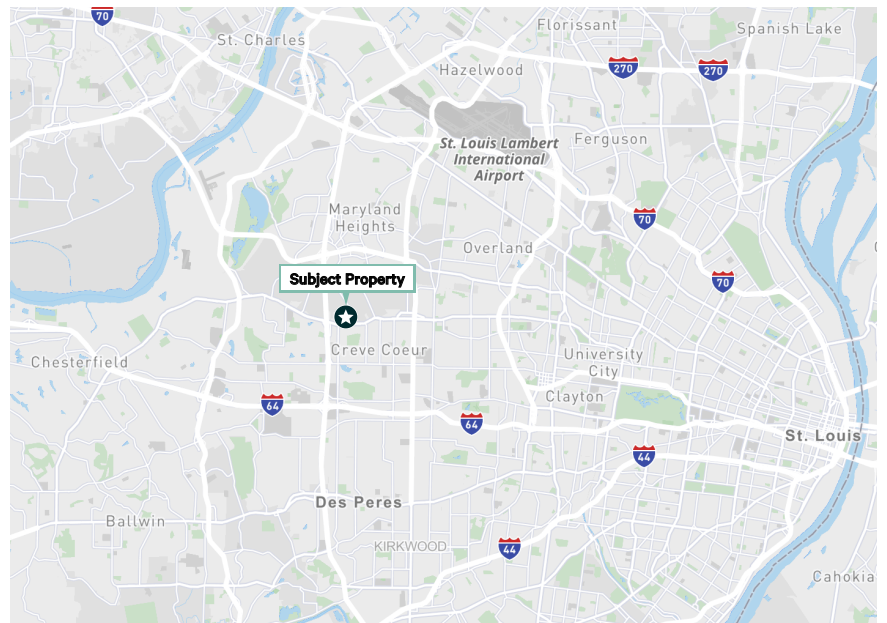
1 CityPlace Drive
Creve Coeur, MO 63141
www.cbre.us/stlouis

Outstanding Opportunity - Two Full Floors Available September 1, 2022



Property Information

- + ±46,831 RSF available 9/1/2022
- + Elevator lobby exposure and access
- + Private exterior and interior balconies
- + Great views overlooking CityPlace lake
- + Exterior building monument signage available
- + Executive garage parking available
- + Market leading amenity package including:
 - Multi-Room Conference Center
 - 50 Seat Training Room
 - 144 Seat Auditorium
 - Fitness Center & Locker Room
 - Full-Service Cafeteria

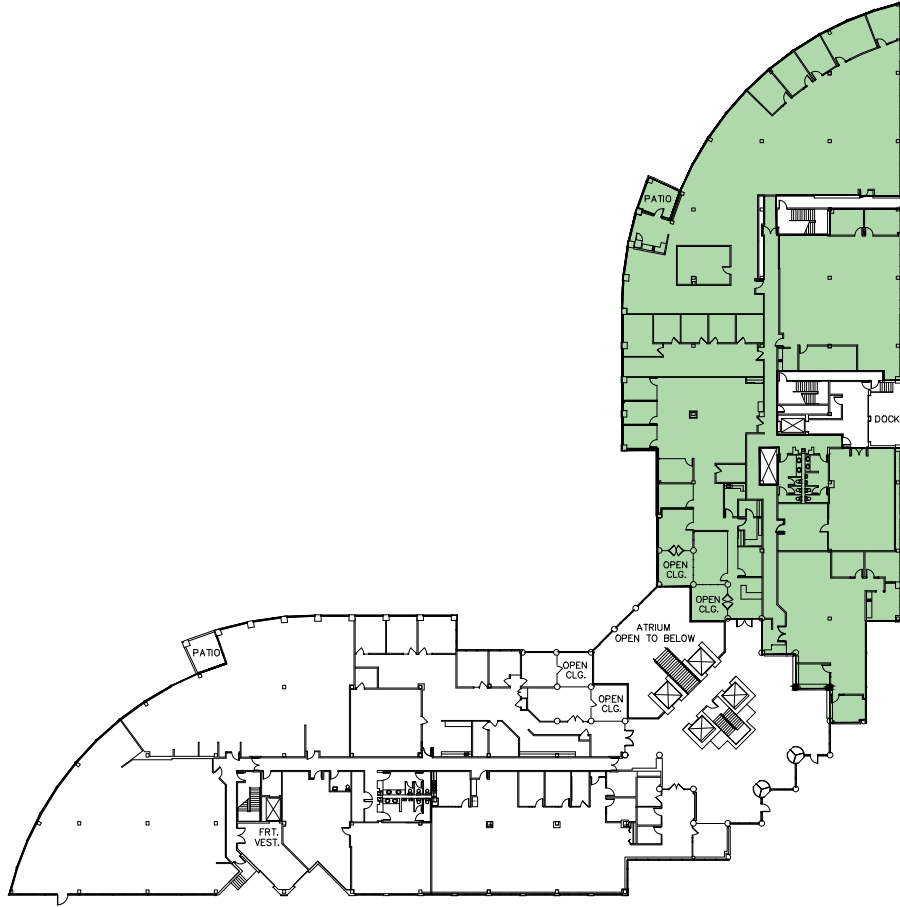


CityPlace 1

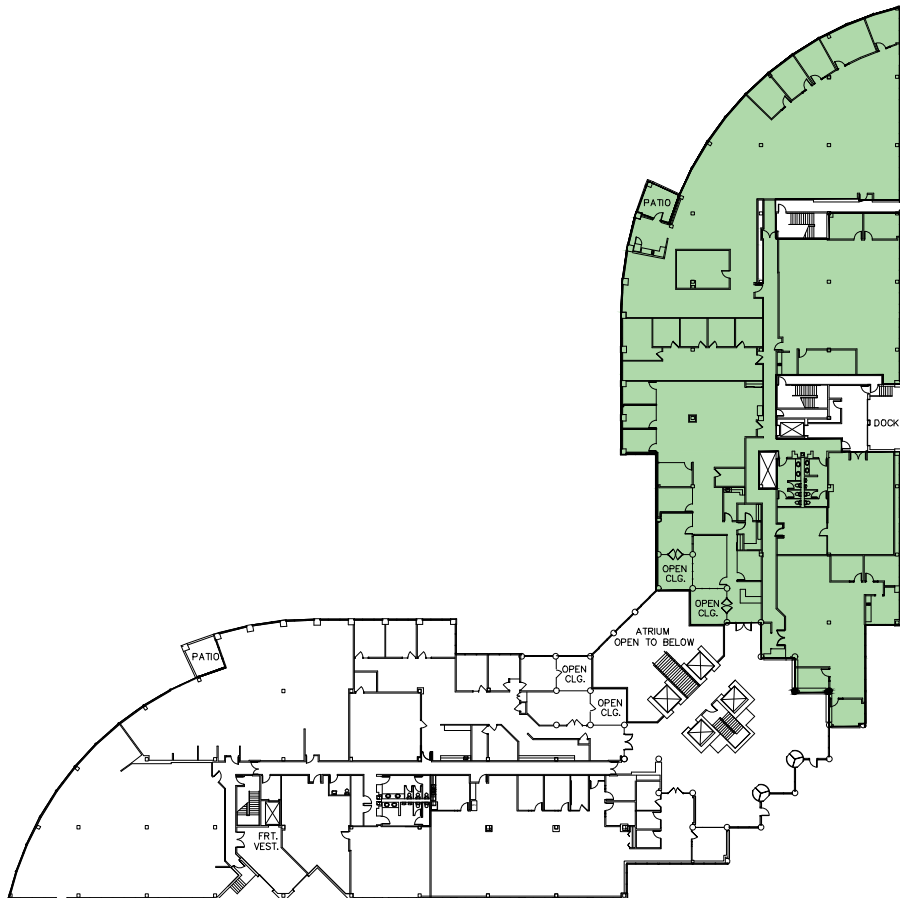
1 CityPlace Drive | Creve Coeur, MO 63141

Floor Plans

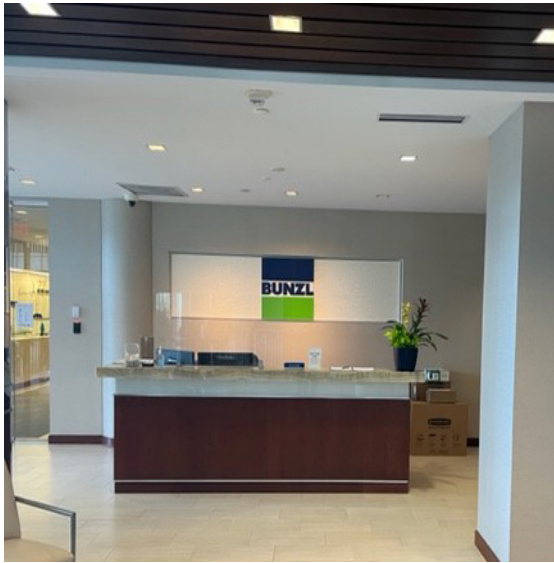
Suite 100



Suite 200



Premises



CityPlace 1

1 CityPlace Drive | Creve Coeur, MO 63141

For Lease

Amenities



Contact Us

Tom Ray

First Vice President
+1 314 655 6012
tom.ray@cbre.com

Brian Lyss

Vice President
+1 314 655 5805
brian.lyss@cbre.com

CBRE, Inc.

190 Carondelet Plaza
Suite 1400
St. Louis, MO 63105

© 2021 CBRE, Inc. All rights reserved. This information has been obtained from sources believed reliable, but has not been verified for accuracy or completeness. You should conduct a careful, independent investigation of the property and verify all information. Any reliance on this information is solely at your own risk. CBRE and the CBRE logo are service marks of CBRE, Inc. All other marks displayed on this document are the property of their respective owners, and the use of such logos does not imply any affiliation with or endorsement of CBRE. Photos herein are the property of their respective owners. Use of these images without the express written consent of the owner is prohibited.

www.cbre.us/stlouis

