

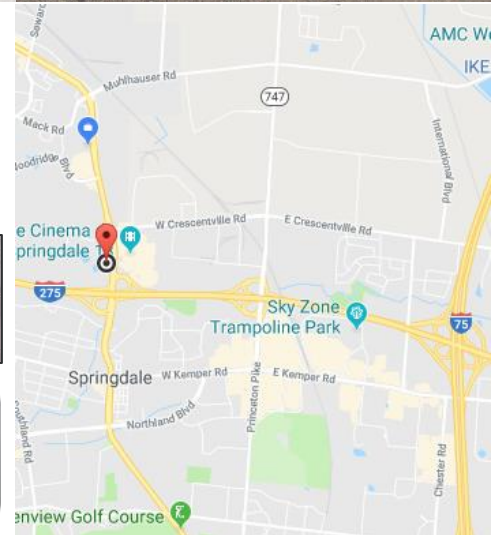
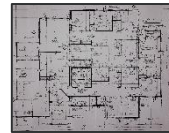
12029 Sheraton Lane

12029 Sheraton Lane | 4,976 SF Available
Springdale, Ohio 45246 | \$12.00/SF MG + Utilities



Property Highlights

Professionally designed medical space, move-in ready
Situated on approximately 1 acre in a professional setting
Convenient access to neighboring retail amenities
Unparalleled visibility and access to I-275
Approximately two miles to I-75 via I-275
Access 24 hours-a-day, 7 days-a-week
10 spaces per 1,000 SF parking
Locally owned and managed
Asking \$12.00/SF Modified Gross



Nick Barela

President, Principal

Direct: (513) 549-5440

nick.barela@republic-cre.com



REPUBLIC
COMMERCIAL REAL ESTATE

Main: (513) 549-0090

Fax: (513) 549-0070

7209 Dixie Highway

Fairfield, Ohio 45014