

# LAKE HAZEL ROAD & LINDER ROAD

EXCLUSIVE LISTING | MERIDIAN, IDAHO



**LOCATION** Property is located east of the northeast corner of W Lake Hazel Road and S Linder Road. Property is on the north side of road.

**ADDRESS** 1370 W Lake Hazel Road, Meridian, Idaho 83642

**SIZE** ±19.5 acres

**PRICE** \$1,159,000

**PARCEL** S1236336005

**ZONING** RUT

**TAXES** \$1600.16 (2017)

**UTILITIES** Sewer and water within 250 feet of property

**COMMENTS**

- Great development opportunity
- Prime location near new development
- View of Boise Foothills and Owyhee Mountains

**Tyler Johnson** | [tjohnson@landadvisors.com](mailto:tjohnson@landadvisors.com)

3597 E Monarch Sky Ln, Suite F-240, Meridian, ID 83646 ph. 208.866.3579 | [www.landadvisors.com](http://www.landadvisors.com)

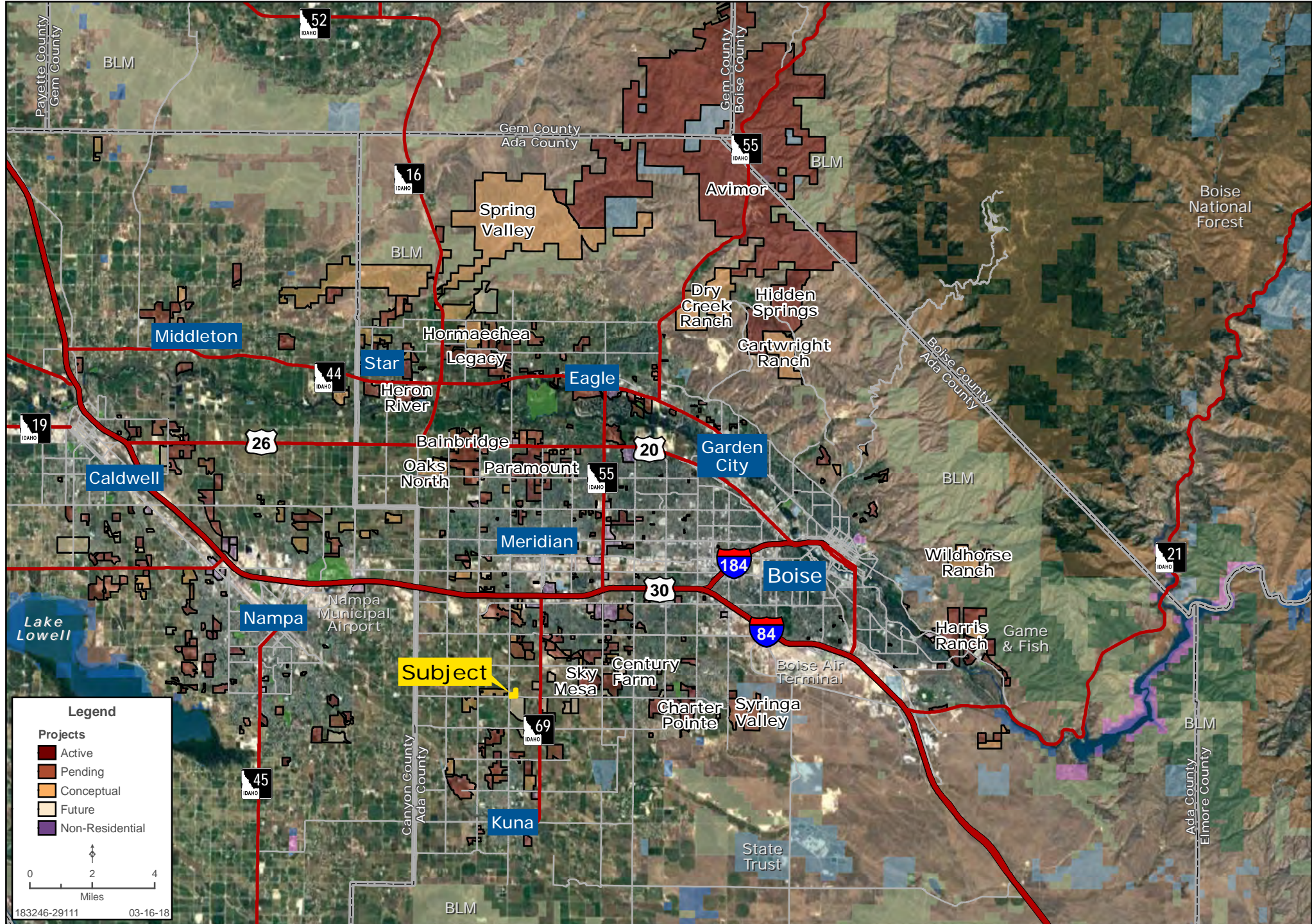
The information contained herein is from sources deemed reliable. We have no reason to doubt its accuracy but do not guarantee it. It is the responsibility of the person reviewing this information to independently verify it. This package is subject to change, prior sale or complete withdrawal. IDAda183246-5.21.18





# METRO MAP

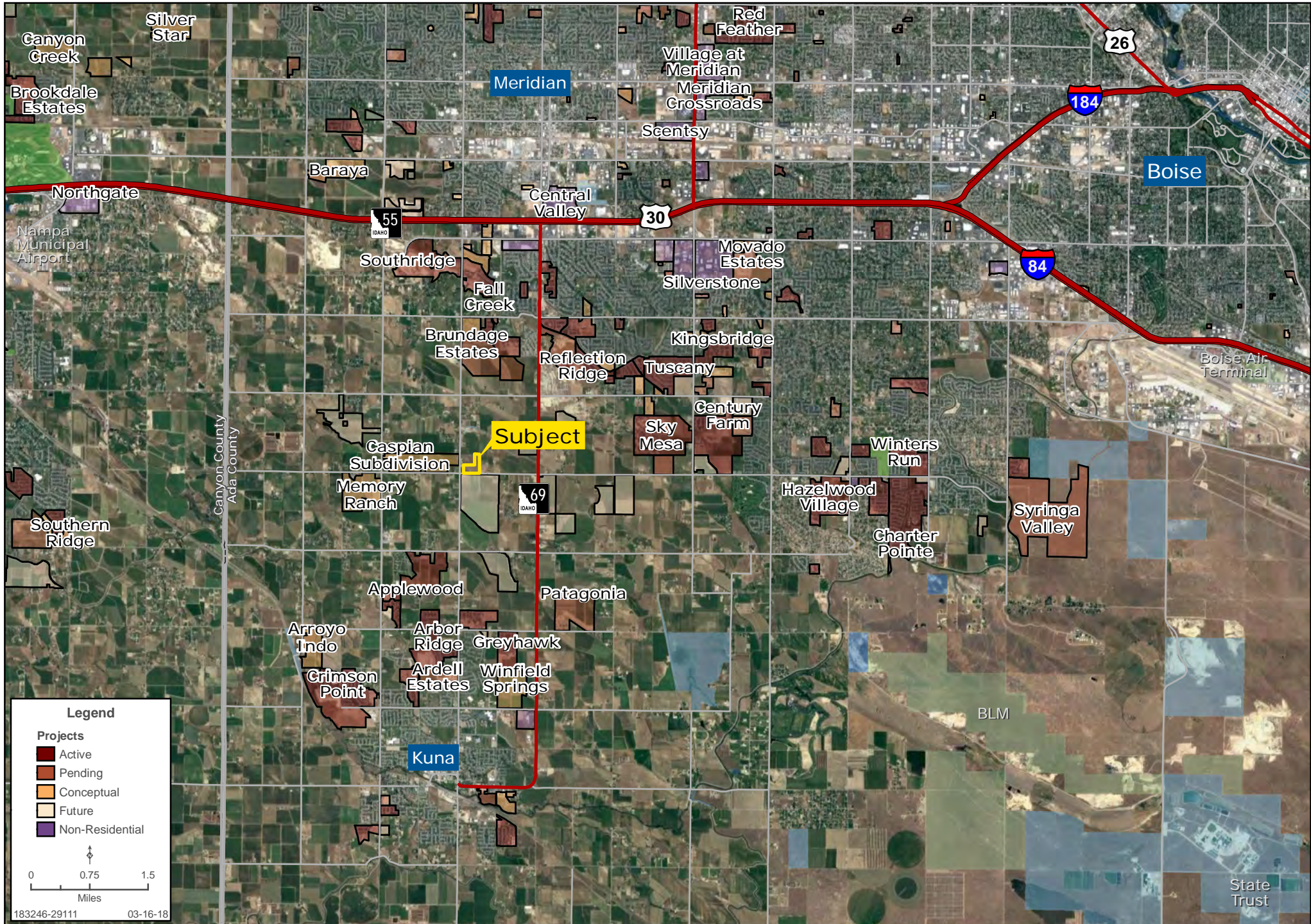
Tyler Johnson | 208.866.3579 | www.landadvisors.com





# REGIONAL MAP

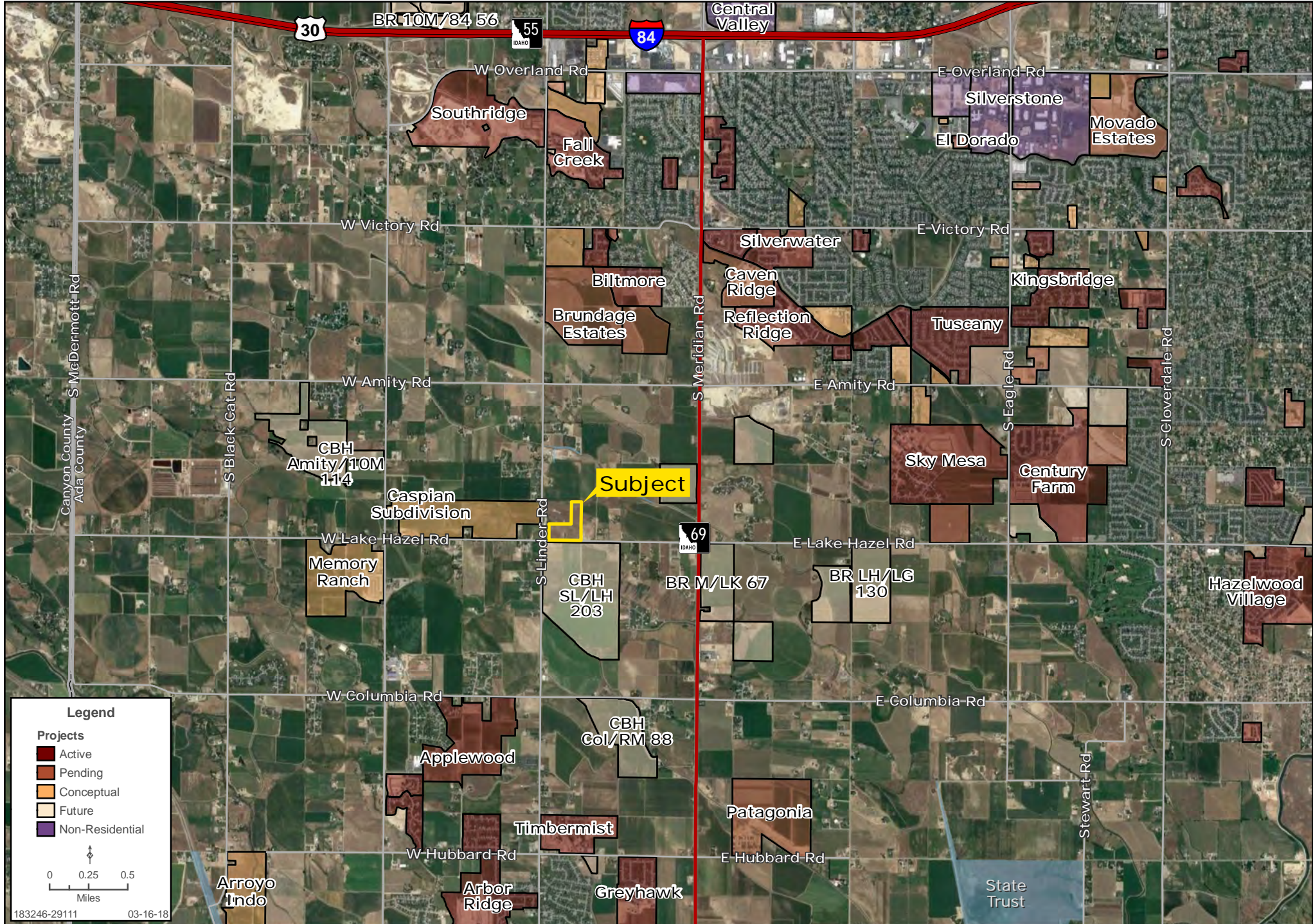
Tyler Johnson | 208.866.3579 | www.landadvisors.com





# SURROUNDING DEVELOPMENT MAP

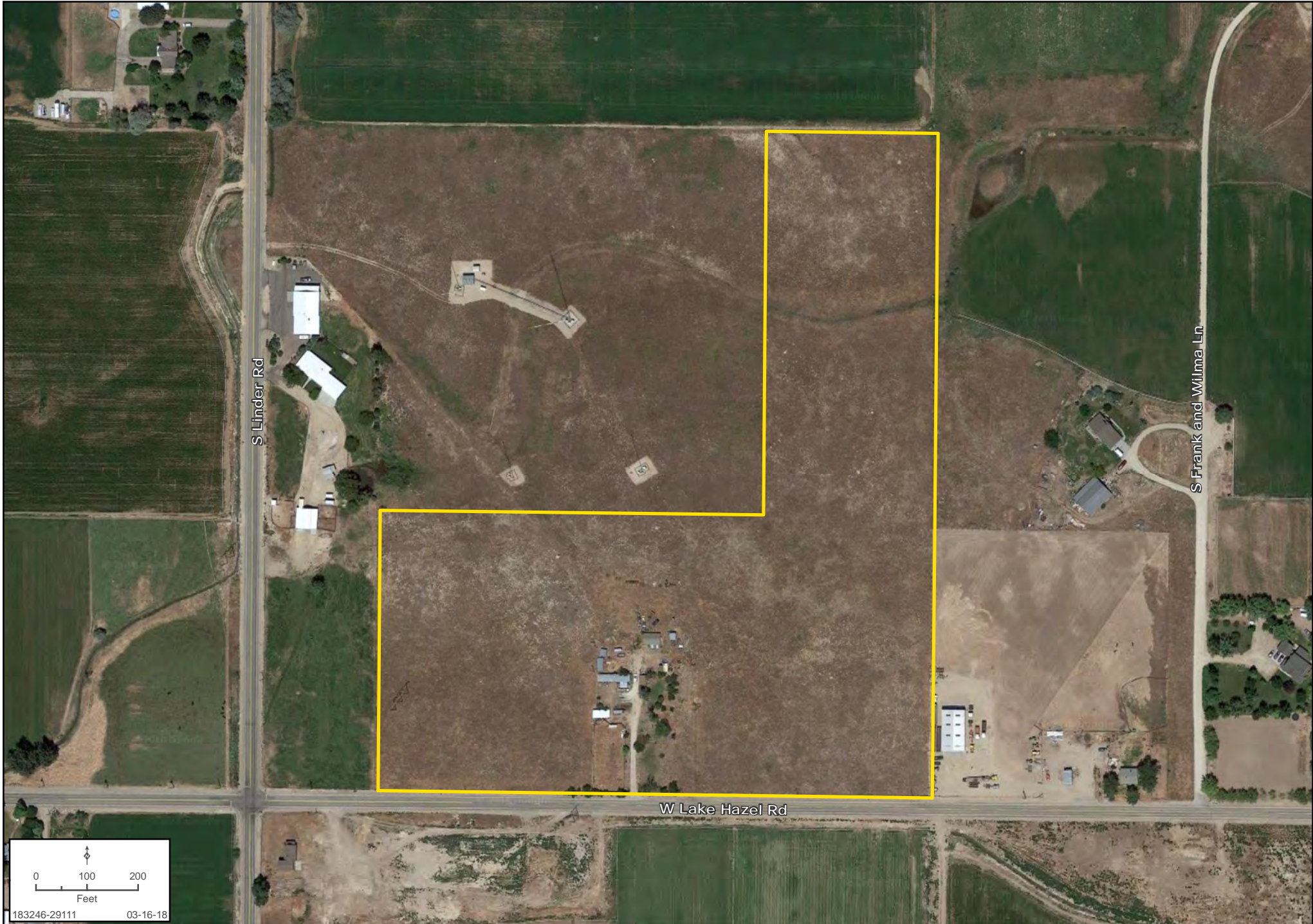
Tyler Johnson | 208.866.3579 | www.landadvisors.com





# PROPERTY DETAIL MAP

Tyler Johnson | 208.866.3579 | www.landadvisors.com



0 100 200  
Feet  
183246-29111 03-16-18



# PROPERTY PHOTO



LAKE HAZEL ROAD



# PROPERTY PHOTO



LAKE HAZEL ROAD