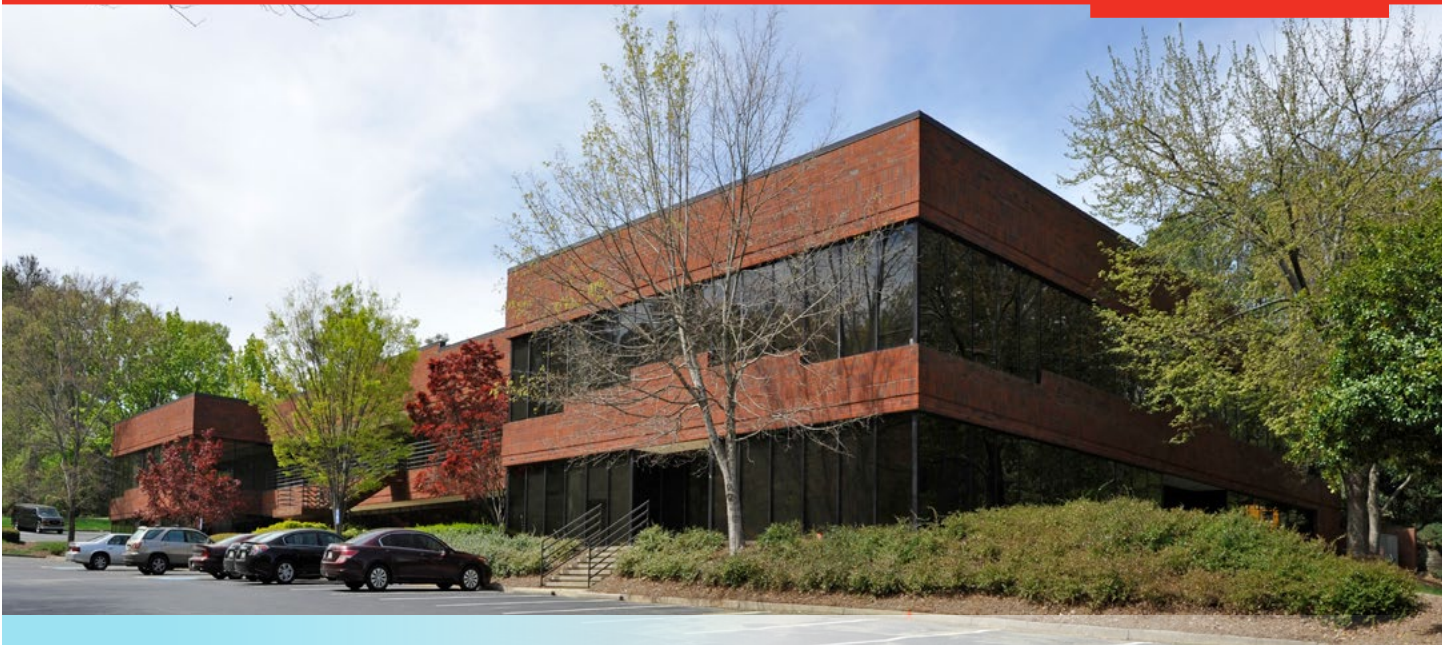


# Phoenix Business Campus

1669 Phoenix Parkway | College Park, Georgia 30349 | Clayton County

**HIGH-QUALITY  
OFFICE SPACE  
AVAILABLE**



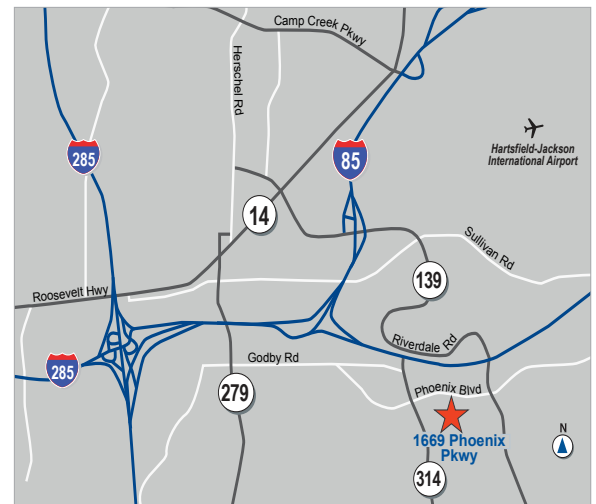
## OFFICE FOR LEASE

**SPACE AVAILABLE** 11,460 SF

**LEASE RATE** \$ 10.00 Modified Gross

### HIGHLIGHTS

- Attractive two-story brick building
- Ample surface parking of 5/1,000 SF
- Extensive landscaping, lush park-like setting
- Qualifies for Tier 1 tax credits
- Less than 1 mile to Hartsfield-Jackson Atlanta International Airport
- Convenient access to Interstates I-285, I-85 & I-75
- Located in Airport South CID
- Close to retail, restaurants, hotels and banks



**FRANK FARRELL**  
770.913.3948  
ffarrell@ackermanco.net

**KRIS REDDING**  
770.913.3926  
kredding@ackermanco.net

**Ackerman & Co.**

[www.ackermanco.com](http://www.ackermanco.com)

©2019 Ackerman & Co. All rights reserved. While we have no reason to doubt the accuracy of the information provided from sources we deem reliable, we cannot guarantee it and therefore assume no liability for errors, omissions or changes to this content.

# Phoenix Business Campus

Up to 11,460 SF Office space available for lease

1669 Phoenix Parkway  
College Park, Georgia 30349  
Clayton County

## AERIAL SHOWING BUILDING LOCATION AND MARTA BUS STOPS



©2019 Ackerman & Co. All rights reserved. While we have no reason to doubt the accuracy of the information provided from sources we deem reliable, we cannot guarantee it and therefore assume no liability for errors, omissions or changes to this content.

FRANK FARRELL  
770.913.3948  
ffarrell@ackermanco.net

KRIS REDDING  
770.913.3926  
kredding@ackermanco.net

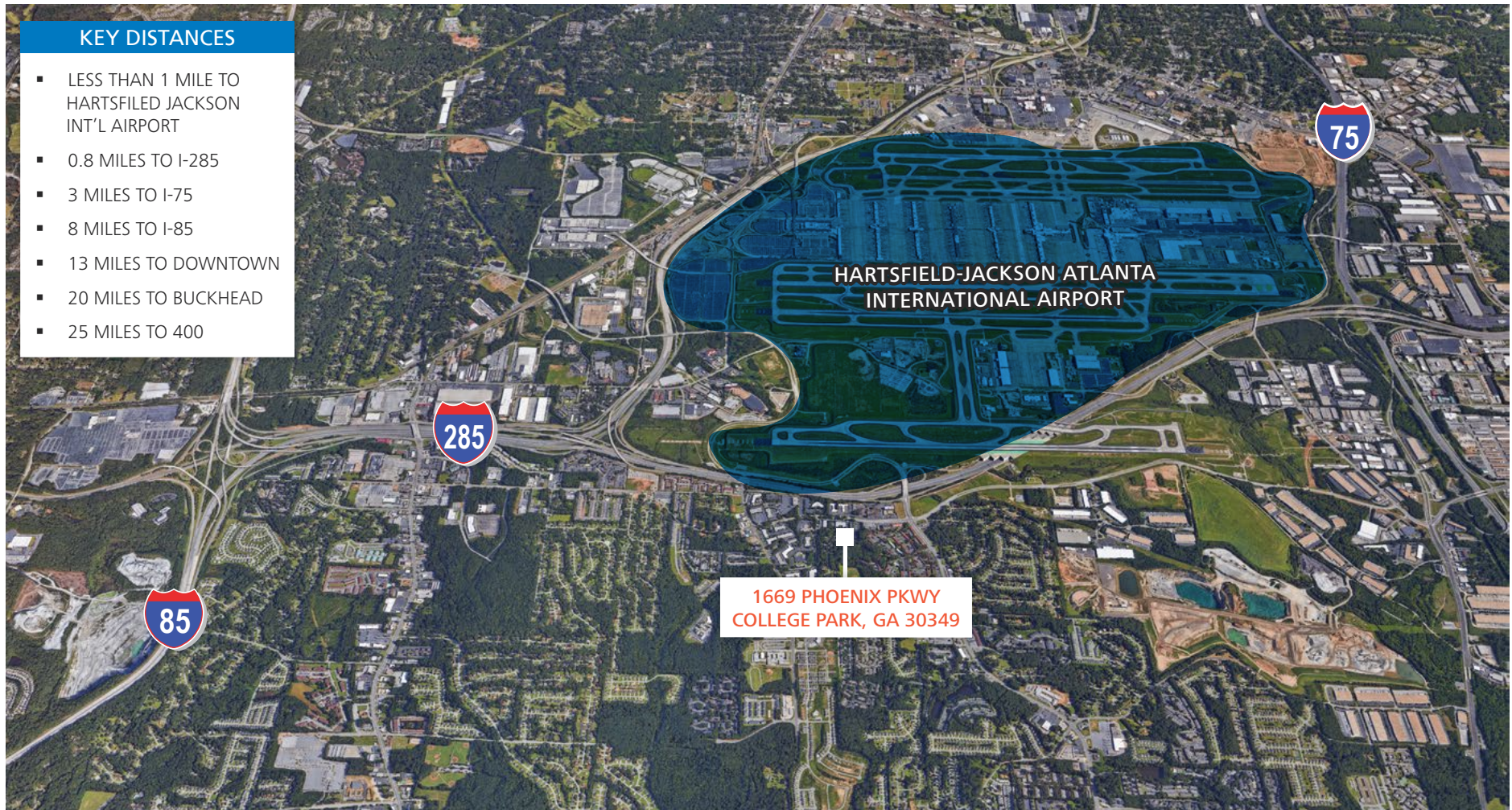
Ackerman & Co.

# Phoenix Business Campus

Up to 11,460 SF Office space available for lease

1669 Phoenix Parkway  
College Park, Georgia 30349  
Clayton County

## AERIAL SHOWING BUILDING LOCATION IN PROXIMITY TO HARTSFIELD-JACKSON ATLANTA INTERNATIONAL AIRPORT



©2019 Ackerman & Co. All rights reserved. While we have no reason to doubt the accuracy of the information provided from sources we deem reliable, we cannot guarantee it and therefore assume no liability for errors, omissions or changes to this content.

**FRANK FARRELL**  
770.913.3948  
ffarrell@ackermanco.net

**KRIS REDDING**  
770.913.3926  
kredding@ackermanco.net

**Ackerman & Co.**