

Plymouth Business Center

3905 Annapolis Avenue North, Plymouth, MN



FOR LEASE



13 Building Development

Property Highlights

- Established business park with over 700,000 square feet of space
- Available suite is 5,597 square feet
- Multiple product types including office/showroom, office/warehouse, and bulk/warehouse buildings
- Dock and drive-in loading
- Landmark visibility provides outstanding corporate identity and easy recognition for visiting clientele
- Exceptional access to I-494 via Highway 55 on the south and Rockford Road on the north
- Area amenities include childcare, retail shops, hotels and restaurants

Jason Meyer
Executive Director
+1 952 820 8735
jason.j.meyer@cushwake.com

Dave Paradise
Senior Director
+1 952 893 8226
dave.paradise@cushwake.com

Sydney Johnson, SIOR
Senior Director
+1 952 893 8840
sydney.johnson@cushwake.com

Cushman & Wakefield
3500 American Blvd W Suite 200
Minneapolis, MN 55431
cushmanwakefield.com

Plymouth Business Center

3905 Annapolis Avenue North, Plymouth, MN



FOR LEASE

BUILDING INFORMATION

Building Size	39,410 SF
Year Built	1989
Clear Height	12'
Bay Depth	120'
Column Spacing	32' x 32'
Power	1,200 AMPS 480/227V Phase 3
Sprinklers	Yes
Parking	96 stalls
Lease Rates	\$11.00 PSF Office \$5.00 PSF Warehouse
2020 Tax & Cam	\$3.23 PSF Total

Property Information

- New roof, landscaping and interior finishes
- 13 building development totalling over 700,000 sf
- Expansion capabilities within the complex
- Locally owned, professionally maintained and operated
- Excellent access to I-494 via Highway 55 & Rockford Road
- Area Amenities include childcare, retail shops, hotels and restaurants

Space Available

Suite	Total SF	Office SF	Warehouse SF	Loading	Availability
155	5,597	2,215	3,382	2 drive-ins	Now

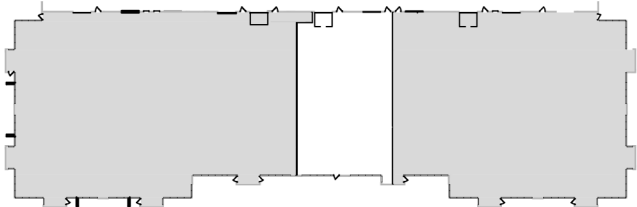
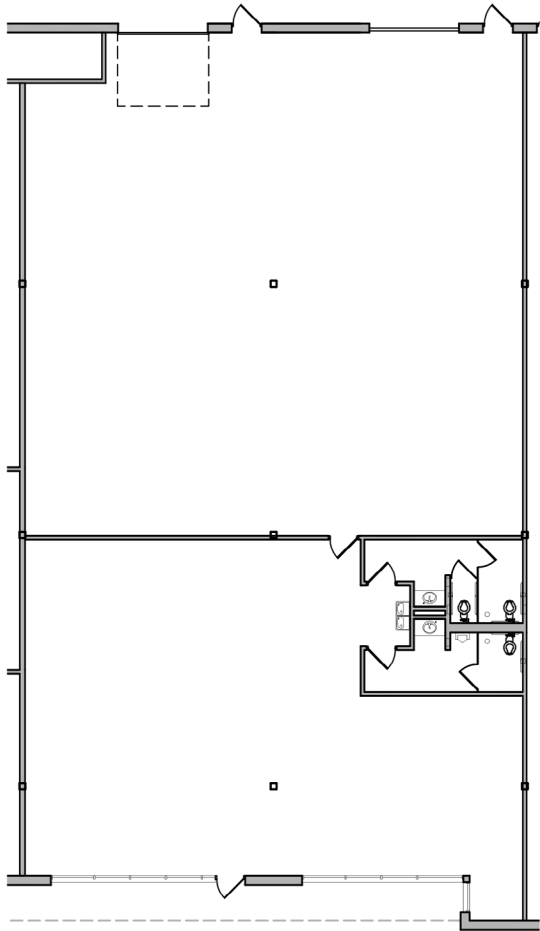
Plymouth Business Center

3905 Annapolis Avenue North, Plymouth, MN



FOR LEASE

Suite 155



AVAILABLE

SUITE 155

OFFICE	=	2,215 S.F.
WAREHOUSE	=	3,382 S.F.
TOTAL	=	5,597 S.F.



Plymouth Business Center

3905 Annapolis Avenue North, Plymouth, MN



FOR LEASE

