

850 Battery Street
San Francisco, CA 94111



FOR LEASE

Approx. 7,000SF

Available April 1, 2020

\$78.50/ SF/ IG

FEATURES

- 1st and 2nd floors with elevator
- 2nd floor private office intensive
- 1st floor mostly open space
- Corner location, newly upgraded
- Built 1941, upgraded in 1974 and completely rebuilt in 2014 adding a floor and full seismic upgrade.

HIGHLIGHTS

850 Battery Street is in an ideal location to San Francisco's Central Business District, with excellent accessibility to restaurants, shops and public transportation.

For more information visit: www.tricommercial.com

Barry Bram, CCIM | CalDRE #00639738

Dir: 415.268.2231 | Cell: 415.516.3313

bbram@tricommercial.com

ADDITIONAL PHOTOS
850 Battery Street



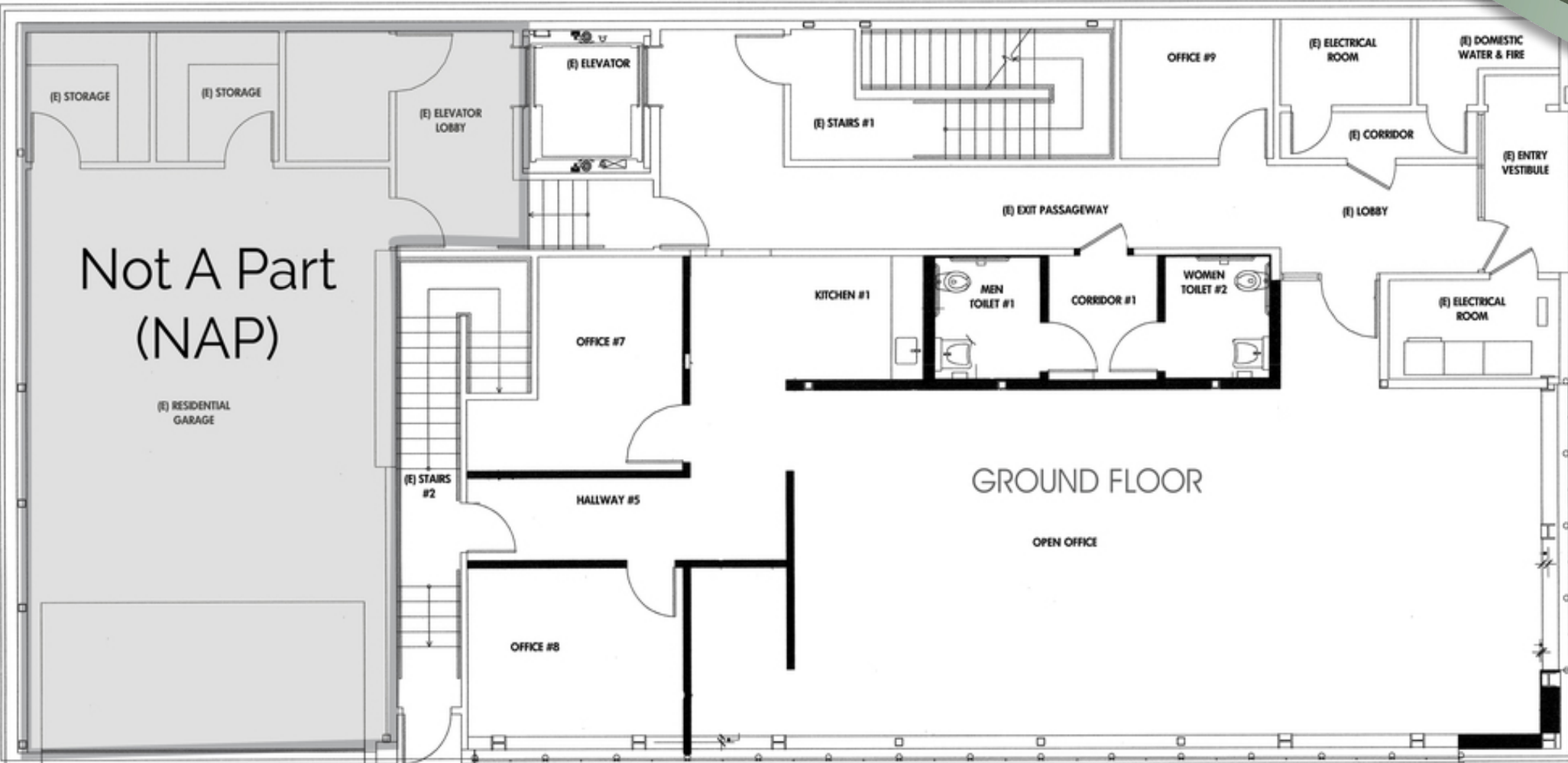
ADDITIONAL PHOTOS
850 Battery Street



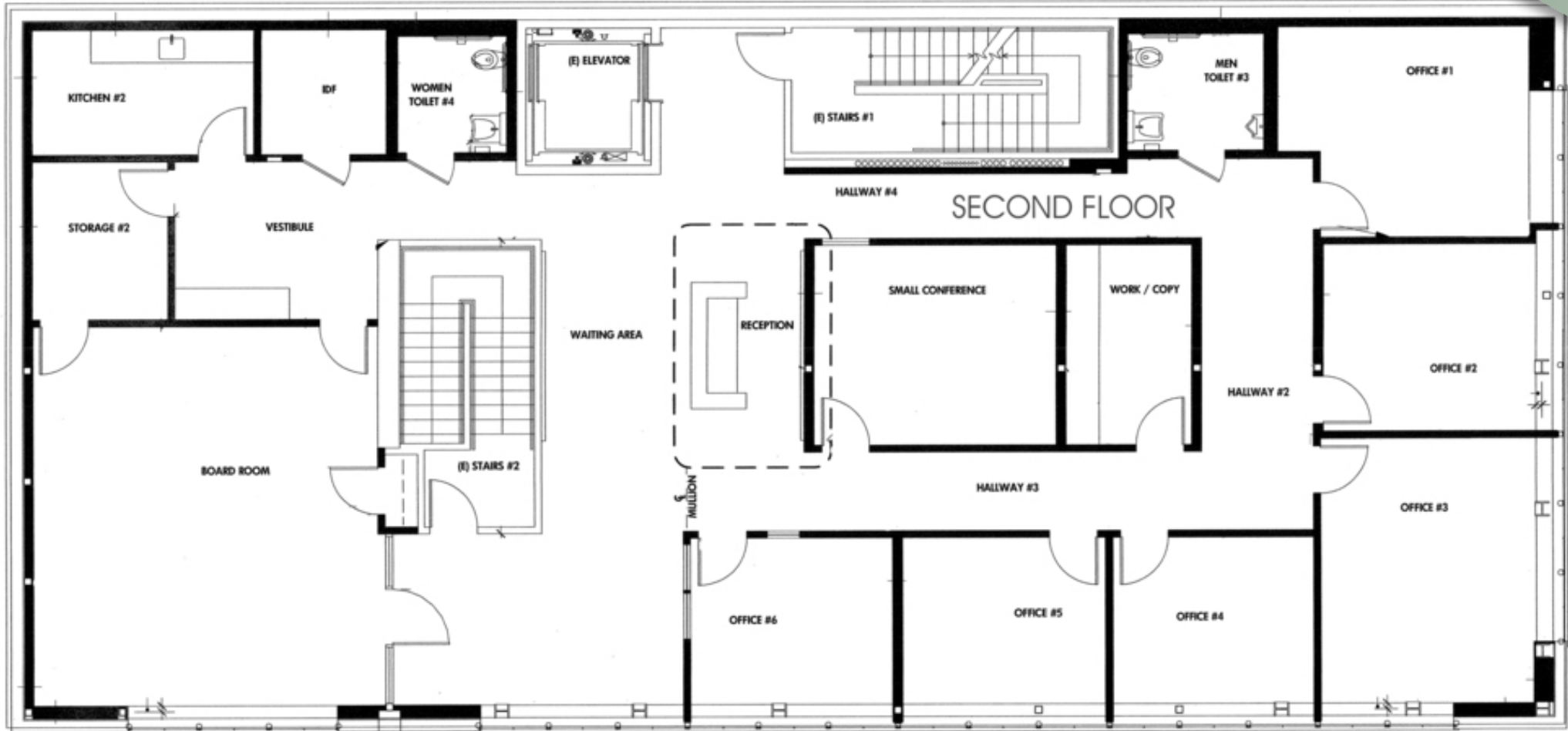
ADDITIONAL PHOTOS
850 Battery Street



GROUND FLOOR



SECOND FLOOR



FOR LEASE OFFICE BUILDING

RETAILER MAP

850 Battery Street



Map data ©2019 Google Imagery ©2019, Data CSUMB SFML, CA OPC

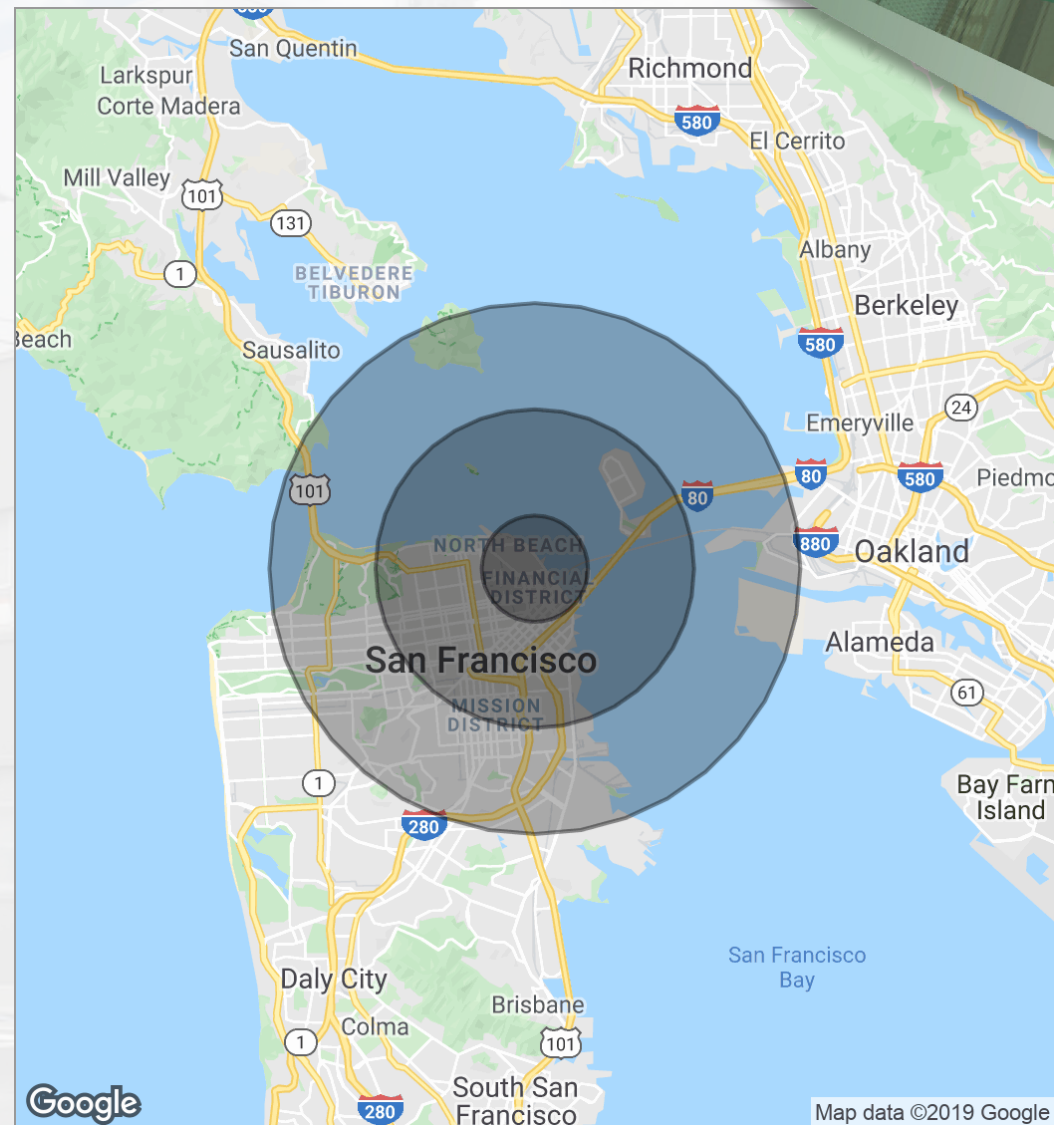
FOR LEASE OFFICE BUILDING

DEMOGRAPHICS MAP

850 Battery Street

POPULATION	1 MILE	3 MILES	5 MILES
Total population	54,779	295,143	578,745
Median age	43.7	39.5	38.2
Median age (Male)	42.9	39.6	38.1
Median age (Female)	44.1	39.2	38.2
HOUSEHOLDS & INCOME	1 MILE	3 MILES	5 MILES
Total households	28,886	159,992	281,723
# of persons per HH	1.9	1.8	2.1
Average HH income	\$86,462	\$95,354	\$104,102
Average house value	\$865,201	\$860,260	\$881,585

** Demographic data derived from 2010 US Census*



Map data ©2019 Google



Barry Bram, CCIM
Dir: 415.268.2231
Cell: 415.516.3313
bbram@tricommercial.com
CalDRE #00639738

TRI Commercial Real Estate Services
71 Stevenson St Ste 1450, San Francisco, CA 94105
Dir: 415.268.2200
Fax: 415.269.2299
www.tricommercial.com

