

888

SEVENTH AVENUE

NEW HIGH-END
TURN-KEY SPACE
WITH PARK VIEWS,
GYM AND SAUNA



PREMISES	Entire 32nd - 19,500 RSF
AVAILABILITY	Arranged
TERM	Through December 2026
ASKING RENT	Upon Request

COMMENTS

- Central Park views
- Recently built high-end space with furniture in place
- 4 partner offices, 29 workstations/trading positions, 11 perimeter offices and ability to add 6 - 10 additional positions
- Reception area, conference center, eat-in pantry, resting room and recreation room
- Large gym with three private bathrooms/showers and sauna
- Supplemental HVAC throughout





RECEPTION



CONFERENCE ROOM



EXECUTIVE OFFICE

CONFERENCE ROOM | WORKSTATIONS | PANTRY | GYM



FLOOR PLAN

4 PARTNER OFFICES

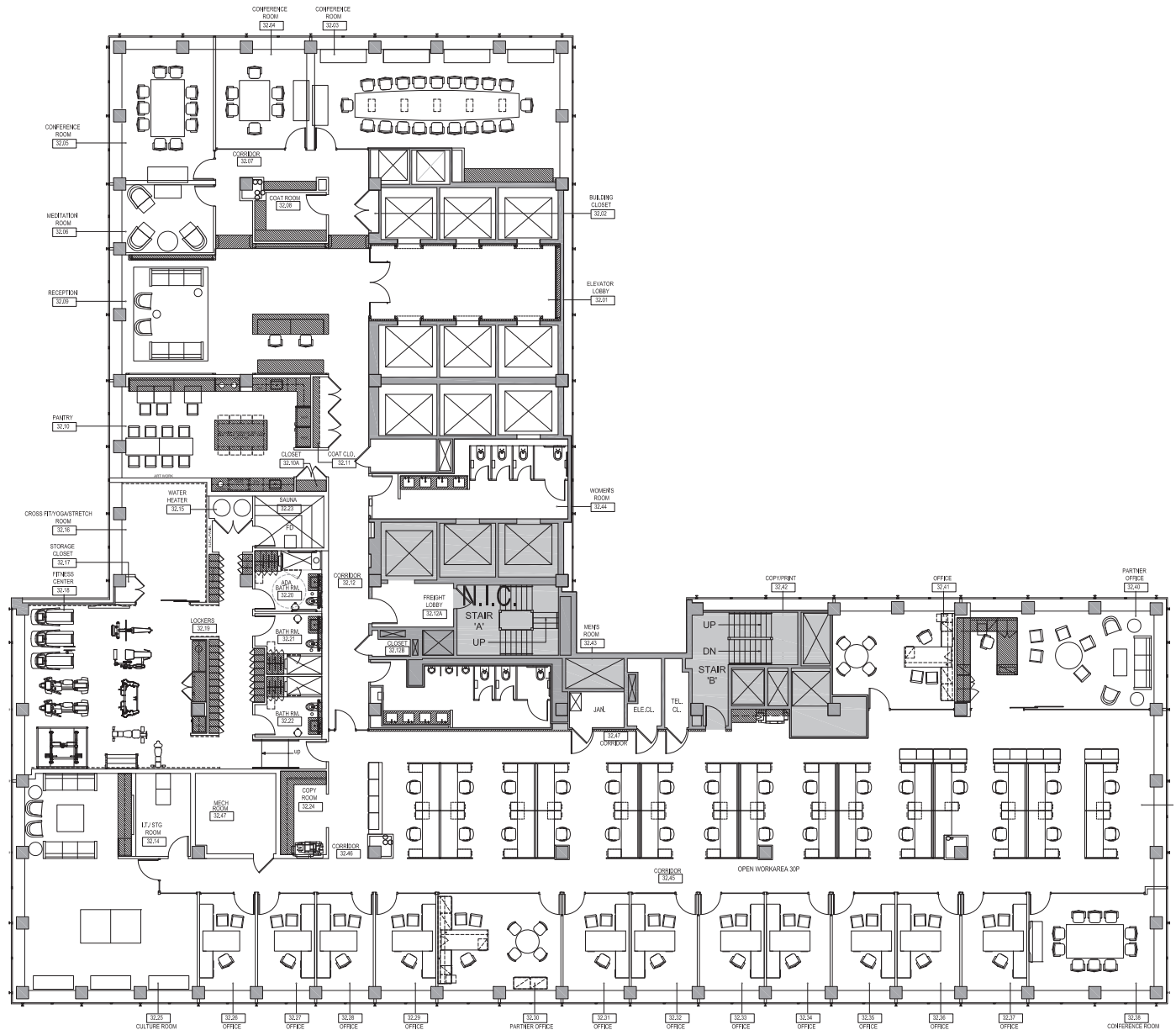
29 WORKSTATIONS/
TRADING POSITIONS

11 PERIMETER OFFICES

*ABILITY TO ADD 6 - 10
ADDITIONAL POSITIONS

ENTIRE 32ND FLOOR
19,500 RSF


DOWNLOAD
PDF



FOR LEASING INFORMATION, PLEASE CONTACT:

JOSH FRIEDMAN
212.372.2305
jfriedman@ngkf.com

MICHAEL HORN
646.441.3806
mhorn@ngkf.com



888

SEVENTH AVENUE

The information contained herein has been obtained from sources deemed reliable but has not been verified and no guarantee, warranty or representation, either express or implied, is made with respect to such information. Terms of sale or lease and availability are subject to change or withdrawal without notice.