

Warehouse Space For Lease

431 Littlefield Avenue

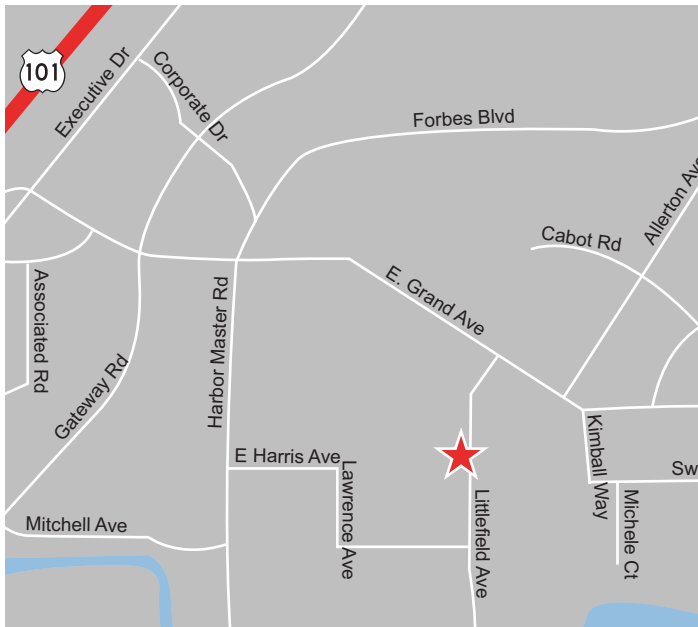
South San Francisco, CA

UNDER NEW OWNERSHIP: **deca**



±6,400 SF Available

As exclusive agent(s), we are pleased to offer the following space:



- ◆ Approximately 60% Warehouse, 40% Office
- ◆ Great Street Visibility
- ◆ Heavy Power
- ◆ Centrally Located in the Industrial and Biotech Mixed Community
- ◆ Parking On-Site
- ◆ Rental Rate: \$2.00/sf NNN



Wes Payne 650.358.5275 wes.payne@ngkf.com CA RE License #02054621

Dan Matteucci 650.358.5276 dmatteucci@ngkf.com CA RE License #01848064

2950 South Delaware Street, Suite 125, San Mateo, CA 94403

www.ngkf.com

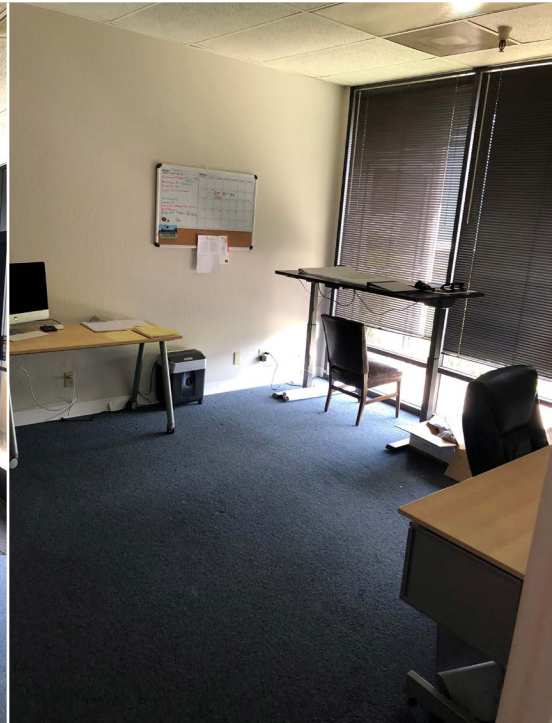
The distributor of this communication is performing acts for which a real estate license is required. The information contained herein has been obtained from sources deemed reliable but has not been verified and no guarantee, warranty or representation, either express or implied, is made with respect to such information. Terms of sale or lease and availability are subject to change or withdrawal without notice.

19-0735 • 06/19

Warehouse Space For Lease

431 Littlefield Avenue

South San Francisco, CA



**Newmark
Knight Frank**

Wes Payne 650.358.5275 wes.payne@ngkf.com CA RE License #02054621

Dan Matteucci 650.358.5276 dmatteucci@ngkf.com CA RE License #01848064

2950 South Delaware Street, Suite 125, San Mateo, CA 94403

www.ngkf.com

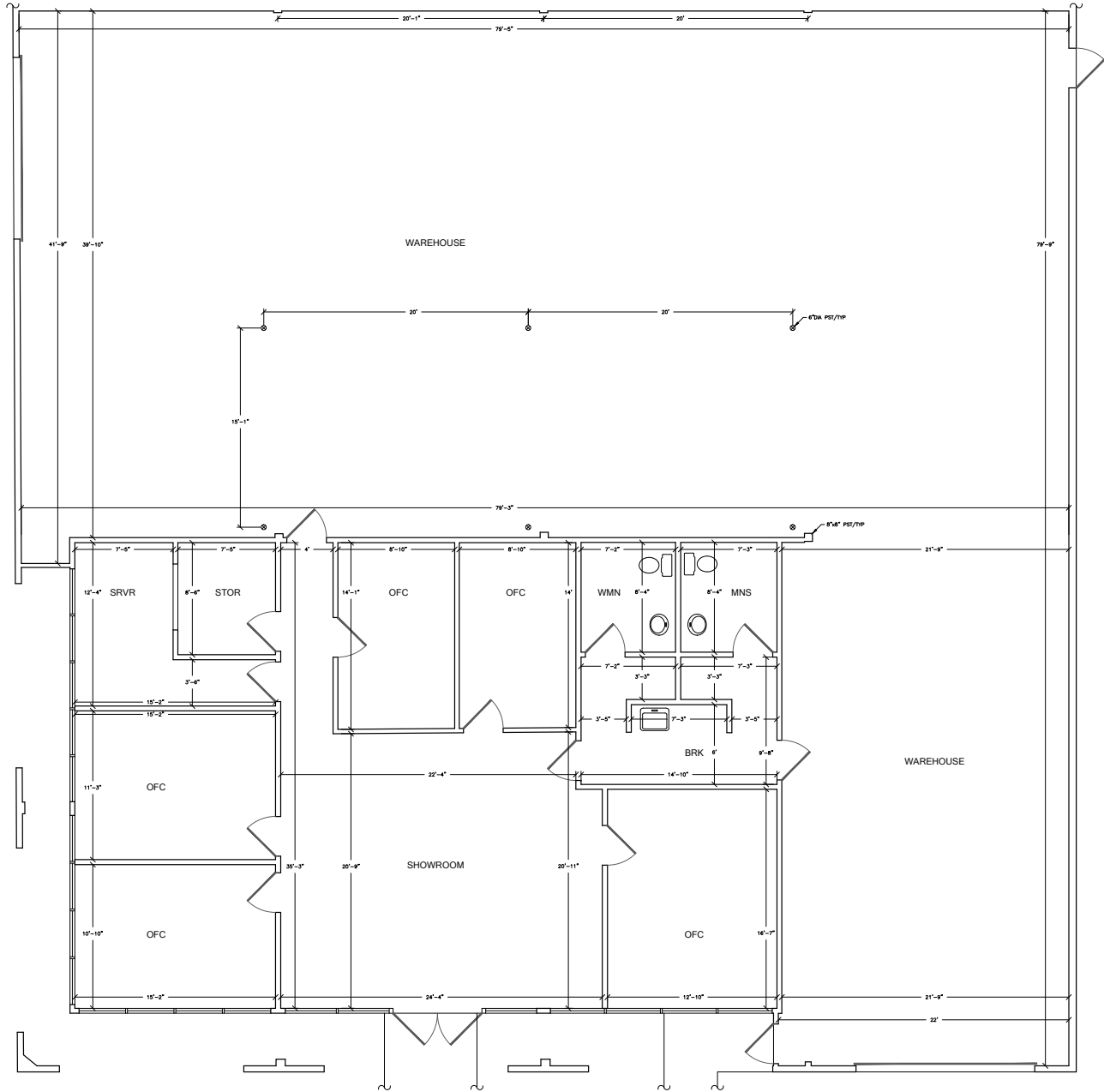
The distributor of this communication is performing acts for which a real estate license is required. The information contained herein has been obtained from sources deemed reliable but has not been verified and no guarantee, warranty or representation, either express or implied, is made with respect to such information. Terms of sale or lease and availability are subject to change or withdrawal without notice.

19-0735 • 06/19

Warehouse Space For Lease

431 Littlefield Avenue

South San Francisco, CA



Wes Payne 650.358.5275 wes.payne@ngkf.com CA RE License #02054621

Dan Matteucci 650.358.5276 dmatteucci@ngkf.com CA RE License #01848064



2950 South Delaware Street, Suite 125, San Mateo, CA 94403

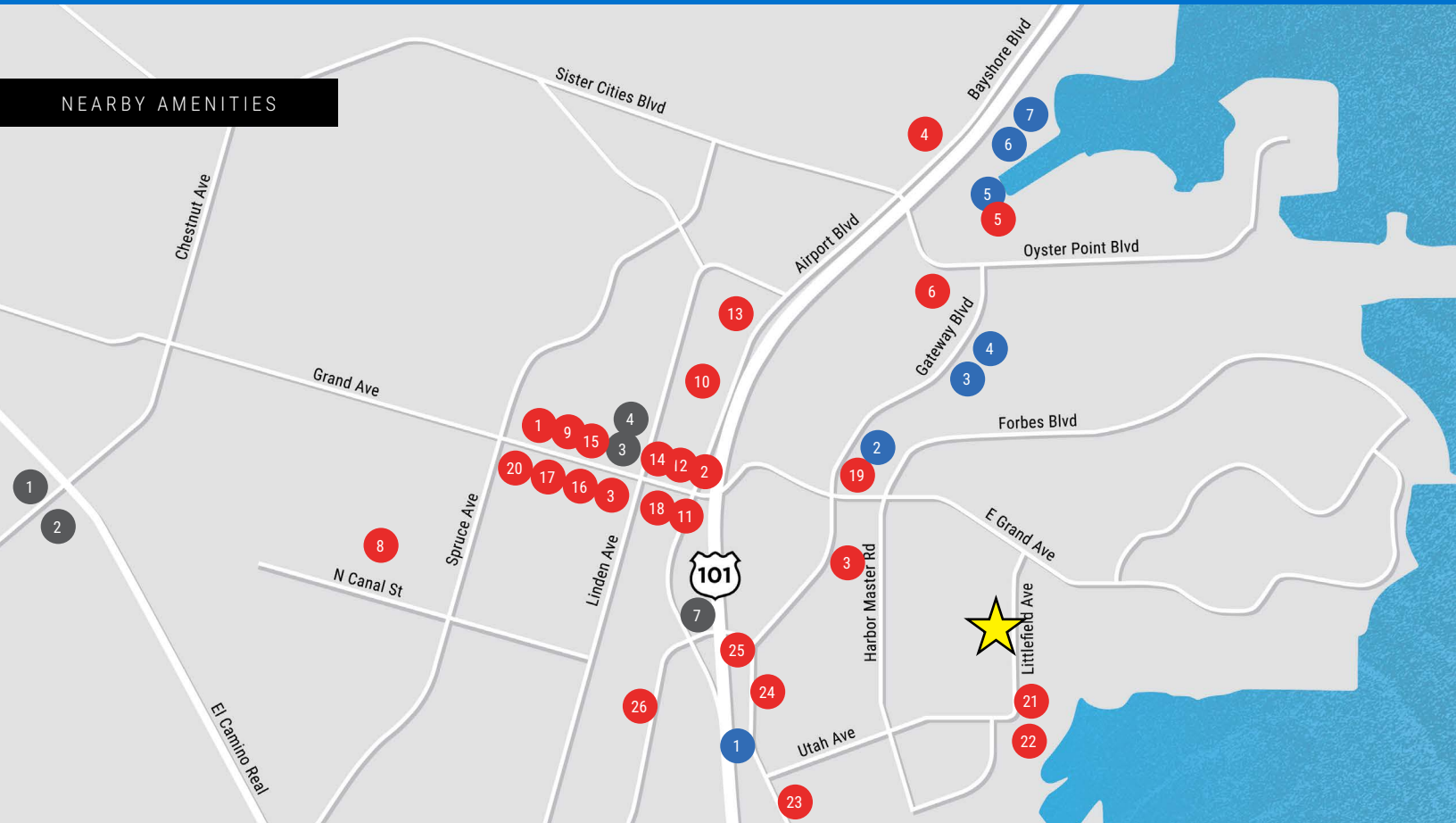
www.ngkf.com

The distributor of this communication is performing acts for which a real estate license is required. The information contained herein has been obtained from sources deemed reliable but has not been verified and no guarantee, warranty or representation, either express or implied, is made with respect to such information. Terms of sale or lease and availability are subject to change or withdrawal without notice.

Warehouse Space For Lease

431 Littlefield Avenue

South San Francisco, CA



NEARBY AMENITIES

BANKS

1. CitiBank (ATM)
2. First National Bank
3. US Bank
4. Wells Fargo Bank

HOTELS

1. Four Points by Sheraton
2. Embassy Suites
3. Hilton Garden Inn
4. Larkspur Landing Hotel
5. AC Hotel by Marriott
6. Courtyard by Marriott
7. Residence Inn by Marriott

RESTAURANTS

Coffeeshops

1. Antigua Coffee Shop
2. Peet's Coffee & Tea
3. Starbucks

Breakfast/Lunch

4. Focaccia Market & Bakery
5. Foundry & Lux
6. Specialty's Café & Bakery
7. Denny's

Lunch/Dinner

8. Basque Cultural Center
9. Ben Tre Vietnamese Cuisine
10. Bertolucci's
11. Big Belly Deli
12. Buon Gusto
13. Darby Dan's Gourmet Sandwiches
14. Di Napoli Pizzeria
15. El Farolito Taqueria
16. Grand Palace
17. La Tapatia Mexicatessen
18. Thai Satay
19. Two Fifty Restaurant
20. Villa Del Sol Argentinian Restaurant
21. Luigi's Sandwich Palace
22. Baysider Cafe
23. McDonald's
24. Houlihan's
25. Popeyes Louisiana Chicken
Dunkin Donuts
26. Ali Baba

Wes Payne 650.358.5275 wes.payne@ngkf.com CA RE License #02054621

Dan Matteucci 650.358.5276 dmatteucci@ngkf.com CA RE License #01848064

2950 South Delaware Street, Suite 125, San Mateo, CA 94403

www.ngkf.com



The distributor of this communication is performing acts for which a real estate license is required. The information contained herein has been obtained from sources deemed reliable but has not been verified and no guarantee, warranty or representation, either express or implied, is made with respect to such information. Terms of sale or lease and availability are subject to change or withdrawal without notice.

19-0735 • 06/19