

# MEDICAL OFFICE FOR SALE

980 ATLANTIC AVENUE • LONG BEACH, CA 90813

**LEE & ASSOCIATES**  
COMMERCIAL REAL ESTATE SERVICES

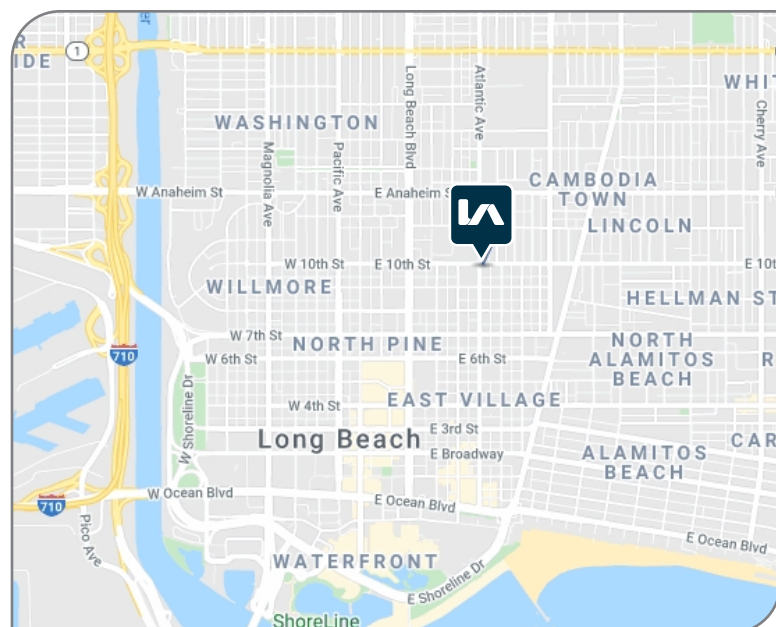


## PROPERTY FEATURES

**SIZE:** ±10,456 SF Office on ±14,891 SF Lot

**ZONED:** PD-30

- ▶ Great Owner/User Opportunity
- ▶ Two-Story Medical Office
- ▶ Abundant Parking - 15 Covered / Secured Parking Underneath & 28 Parking Stalls Total
- ▶ Close Proximity to Restaurants & Retail
- ▶ Minutes Away From 405 & 710 Freeways



FOR MORE INFORMATION, PLEASE CONTACT:

YOUR LOCAL MARKET EXPERTS

**Shaun McCullough, CCIM, SIOR**  
Principal | License ID 01380928  
PH: 562.354.2517  
E: smccullough@leelalb.com

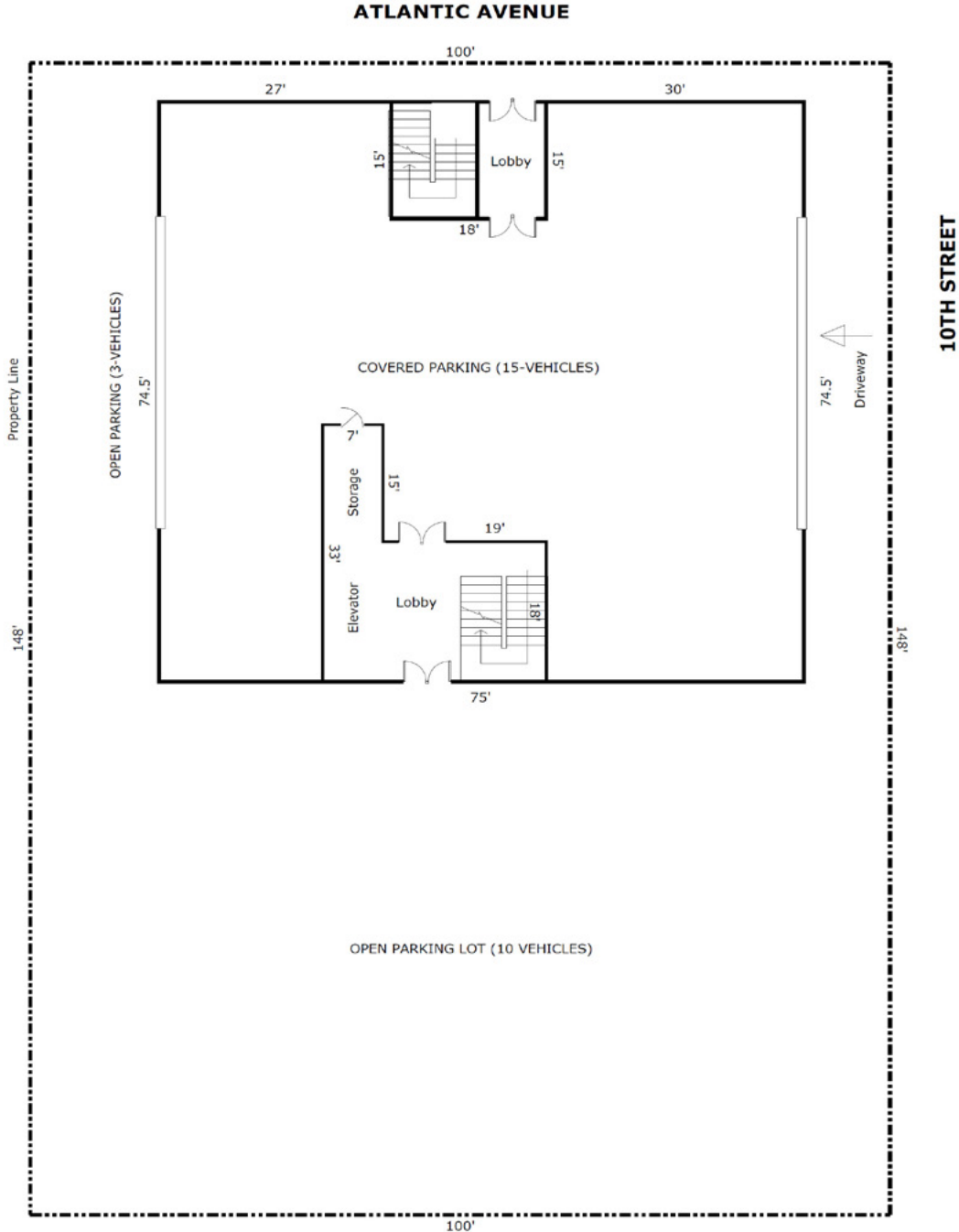
**Jeff Coburn, CCIM, SIOR**  
Principal | License ID 01303169  
PH: 562.354.2511  
E: jcoburn@leelalb.com

**Greg Martin**  
Principal | License ID 01001749  
PH: 909.373.2904  
E: gmartin@lee-assoc.com

# MEDICAL OFFICE FOR SALE

980 ATLANTIC AVENUE • LONG BEACH, CA 90813

## SITE PLAN (NOT TO SCALE)



Copyright © Lee & Associates. All rights reserved. No part of this work may be reproduced or distributed without written permission of the copyright owner. The information contained in this report was gathered by Lee & Associates from sources believed to be reliable. Lee & Associates, however, makes no representation concerning the accuracy or completeness of such information and expressly disclaims any responsibility for any inaccuracy contained herein. 6.23.20

FOR MORE INFORMATION, PLEASE CONTACT:

YOUR LOCAL MARKET EXPERTS

**Shaun McCullough, CCIM, SIOR**  
Principal | License ID 01380928  
PH: 562.354.2517  
E: smccullough@leelalb.com

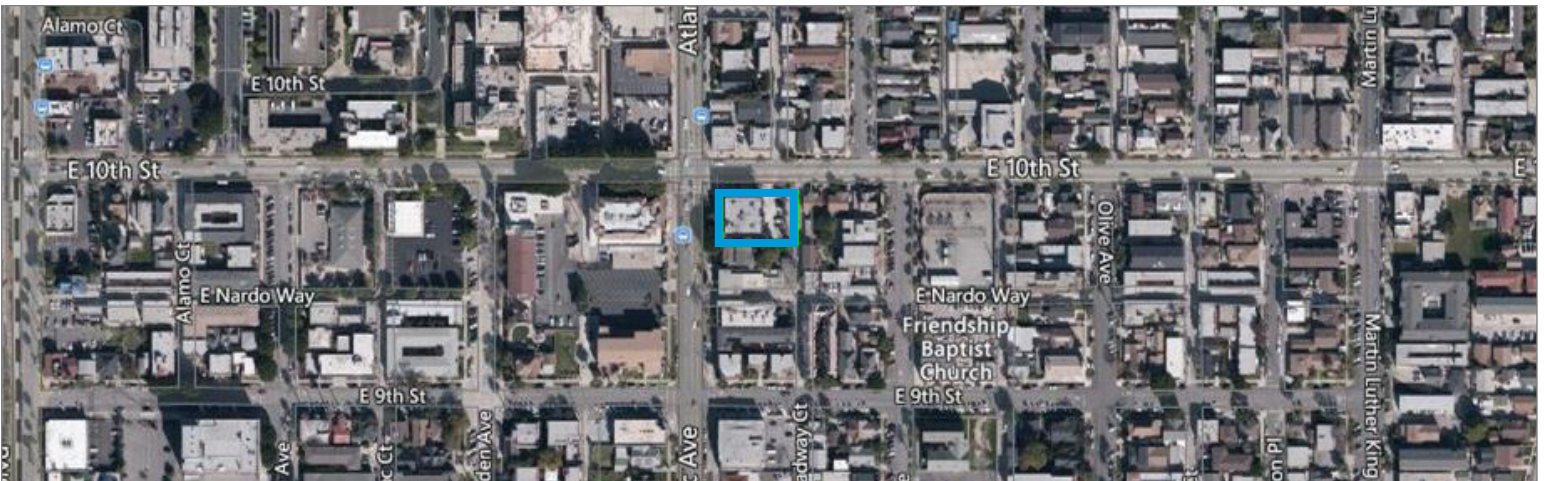
**Jeff Coburn, CCIM, SIOR**  
Principal | License ID 01303169  
PH: 562.354.2511  
E: jcoburn@leelalb.com

**Greg Martin**  
Principal | License ID 01001749  
PH: 909.373.2904  
E: gmartin@lee-assoc.com

# MEDICAL OFFICE FOR SALE

980 ATLANTIC AVENUE • LONG BEACH, CA 90813

**LEE & ASSOCIATES**  
COMMERCIAL REAL ESTATE SERVICES



Copyright © Lee & Associates. All rights reserved. No part of this work may be reproduced or distributed without written permission of the copyright owner. The information contained in this report was gathered by Lee & Associates from sources believed to be reliable. Lee & Associates, however, makes no representation concerning the accuracy or completeness of such information and expressly disclaims any responsibility for any inaccuracy contained herein. [6.23.20](#)

**FOR MORE INFORMATION, PLEASE CONTACT:** **YOUR LOCAL MARKET EXPERTS**

**Shaun McCullough, CCIM, SIOR**  
Principal | License ID 01380928  
PH: 562.354.2517  
E: [smccullough@leelalb.com](mailto:smccullough@leelalb.com)

**Jeff Coburn, CCIM, SIOR**  
Principal | License ID 01303169  
PH: 562.354.2511  
E: [jacoburn@leelalb.com](mailto:jcoburn@leelalb.com)

**Greg Martin**  
Principal | License ID 01001749  
PH: 909.373.2904  
E: [gmartin@lee-assoc.com](mailto:gmartin@lee-assoc.com)