

115 WILLITS STREET
BIRMINGHAM, MICHIGAN

AERES



SIGNATURE
ASSOCIATES

RETAIL FOR LEASE

6,891 Square Feet Available

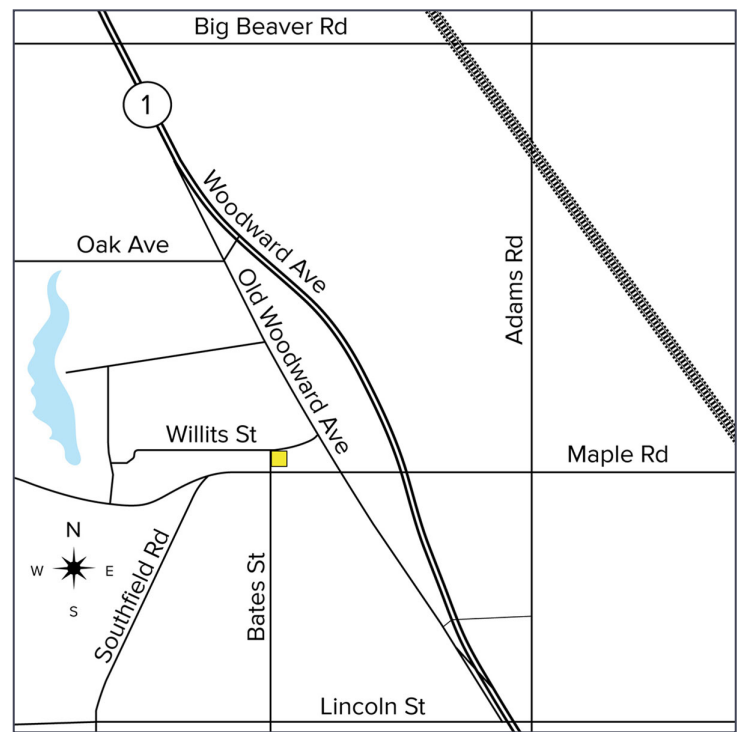
FORMER CAMERON'S STEAKHOUSE



PROPERTY FEATURES

- 6,891 available square feet
- Zoned B-4, Business
- Built in 2001
- Located on the 1st floor of The Willits Mid-Rise Luxury Condos
- Birmingham's lively, pedestrian-friendly downtown offers one of the Midwest's premiere shopping districts
- Lease Rate: \$32.00/sq.ft. NNN

Comments: Prominent meticulously designed Class A building in the heart of Birmingham! This former Cameron's Steakhouse is the perfect spot for a restaurant operator. Ample surface parking and located directly across the street from public parking structure.



For more information, please contact:

ANGELA THOMAS

(248) 359 3838

athomas@signatureassociates.com

ERICA DUNLAP

(248) 359 3808

edunlap@signatureassociates.com

SIGNATURE ASSOCIATES

One Towne Square, Suite 1200

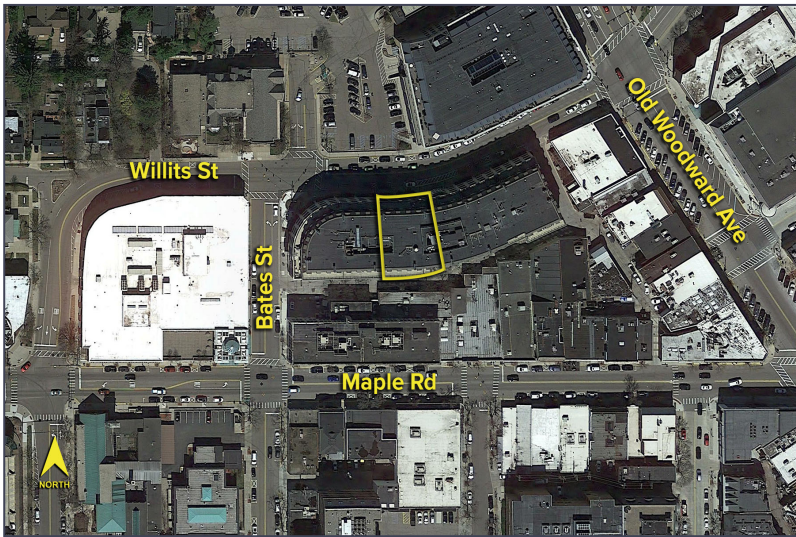
Southfield, MI 48076

www.signatureassociates.com

115 WILLITS STREET - BIRMINGHAM, MICHIGAN

Retail For Lease

6,891
Square Feet
AVAILABLE



DEMOGRAPHICS

	POPULATION	MED. HH INCOME
1 MILE	13,978	\$137,538
3 MILE	83,463	\$112,190
5 MILE	224,261	\$102,075

TRAFFIC COUNTS (TWO-WAY)

10,719	Willits St. & Bates St. 2-Way
85,354	Old Woodward Ave. & Hamilton 2-Way
52,207	Woodward Ave. & Maple Rd. 2-Way
12,067	Maple Rd. & Old Woodward Ave. 2-Way



For more information, please contact:

ANGELA THOMAS
(248) 359 3838
athomas@signatureassociates.com

ERICA DUNLAP
(248) 359 3808
edunlap@signatureassociates.com

SIGNATURE ASSOCIATES
One Towne Square, Suite 1200
Southfield, MI 48076
www.signatureassociates.com

SNAPSHOT OF BIRMINGHAM

AERES

SIGNATURE ASSOCIATES



The City of Birmingham is an energetic hub for all things “Live, Shop, Play” and is known as one of the nation’s most affluent suburbs. Birmingham has a thriving pedestrian friendly retail shopping district with a historic downtown dating back to the 1830s. The downtown area is comprised of approximately 300 retail and service businesses with everything your heart desires.

TRADE AREA/STATS (2019 ESTIMATES)

TOTAL POPULATION	225,802
TOTAL HOUSEHOLDS	100,119
% FEMALE	51.7%
% MALE	48.3%
MEDIAN AGE	42.3
TOTAL HOUSEHOLD EXPENDITURE	\$8.51 billion
AVERAGE HOUSEHOLD INCOME	\$188,140
AVERAGE HOME PRICE	\$390,975

BIRMINGHAM FACTS & FIGURES

- Home to notable retailers and restaurants such as Hastens, Johnny Was, Lululemon, Anthropologie, West Elm, Starbucks Reserve, Paper Source, Hyde Park, & Flemings
- Surrounded by Michigan’s wealthiest zip codes, including Bloomfield Hills, Bloomfield Twp., Franklin/Bingham Farms, and West Bloomfield
- Named one of the “Top 20 Walkable Towns in America” according to an independent audit of more than 600 communities throughout the United States
- There are 5 municipal parking decks that offer 2 hours free, plus metered parking along the main thoroughfares
- CNN Money named Birmingham among Top 10 6-figure towns

For more information, please contact:

ANGELA THOMAS
(248) 359 3838
athomas@signatureassociates.com

ERICA DUNLAP
(248) 359 3808
edunlap@signatureassociates.com

SIGNATURE ASSOCIATES
One Towne Square, Suite 1200
Southfield, MI 48076
www.signatureassociates.com