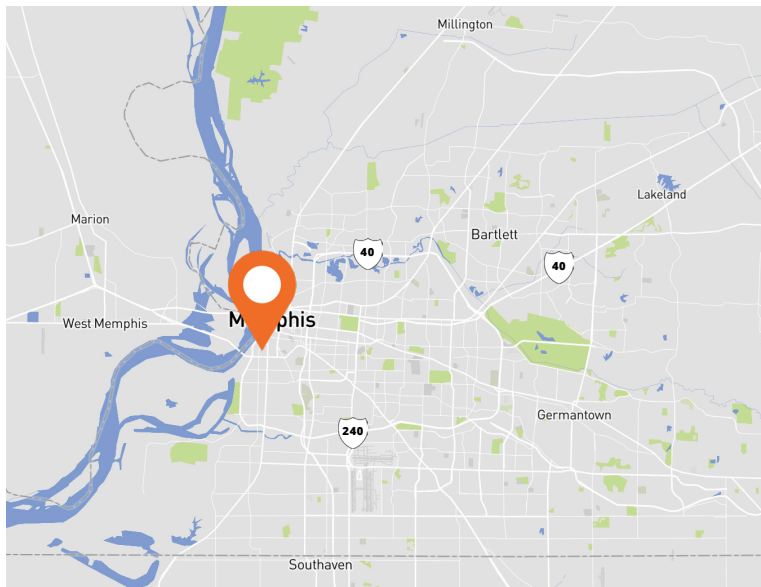


372 South Main Street



Opportunity

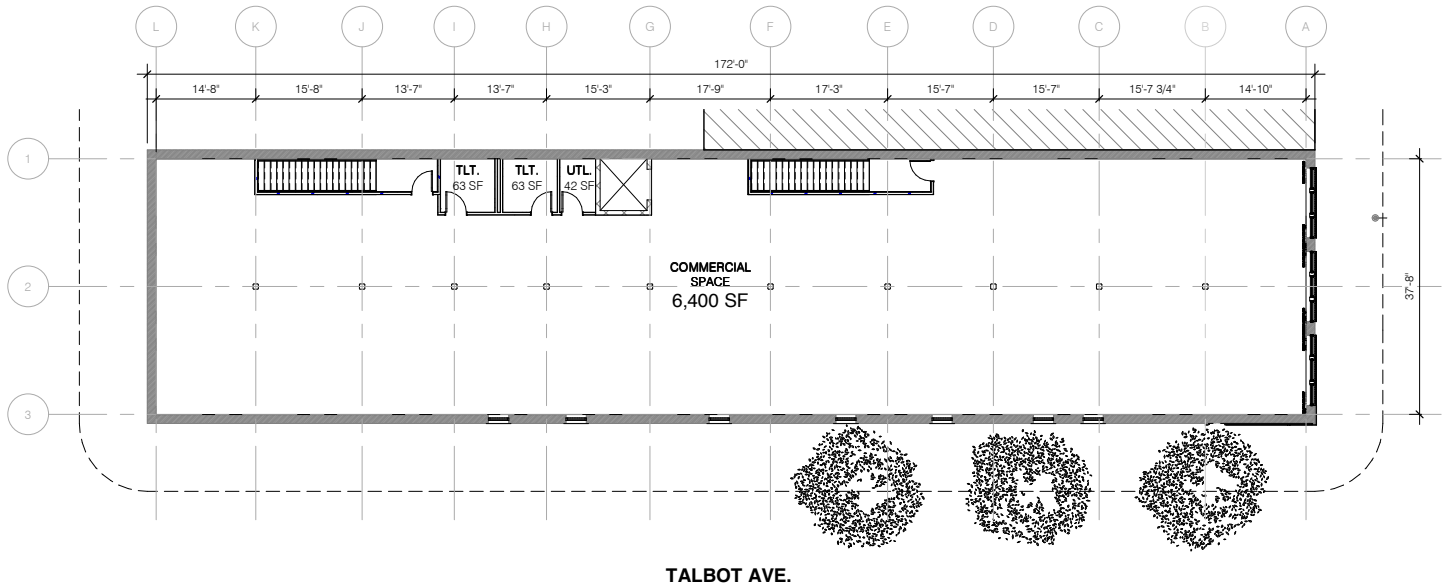
- 6,400 sf retail/office; space is divisible
- Entire first floor available
- Located on a prime corner in the booming South Main Historic Arts District
- Five to ten minute walk from numerous Downtown restaurants, attractions, and shops such as Earnestine & Hazel's, the National Civil Rights Museum, Beale Street Entertainment District, FedEx Forum, Tom Lee Park, Old Dominick Distillery, The Chisca, Central Station Hotel, Arrive Hotel, Stocke & Belle, and more

Jeff Higdon, Vice President
D 901 410 1784
C 901 870 6740
jeff.higdon@avisonyoung.com

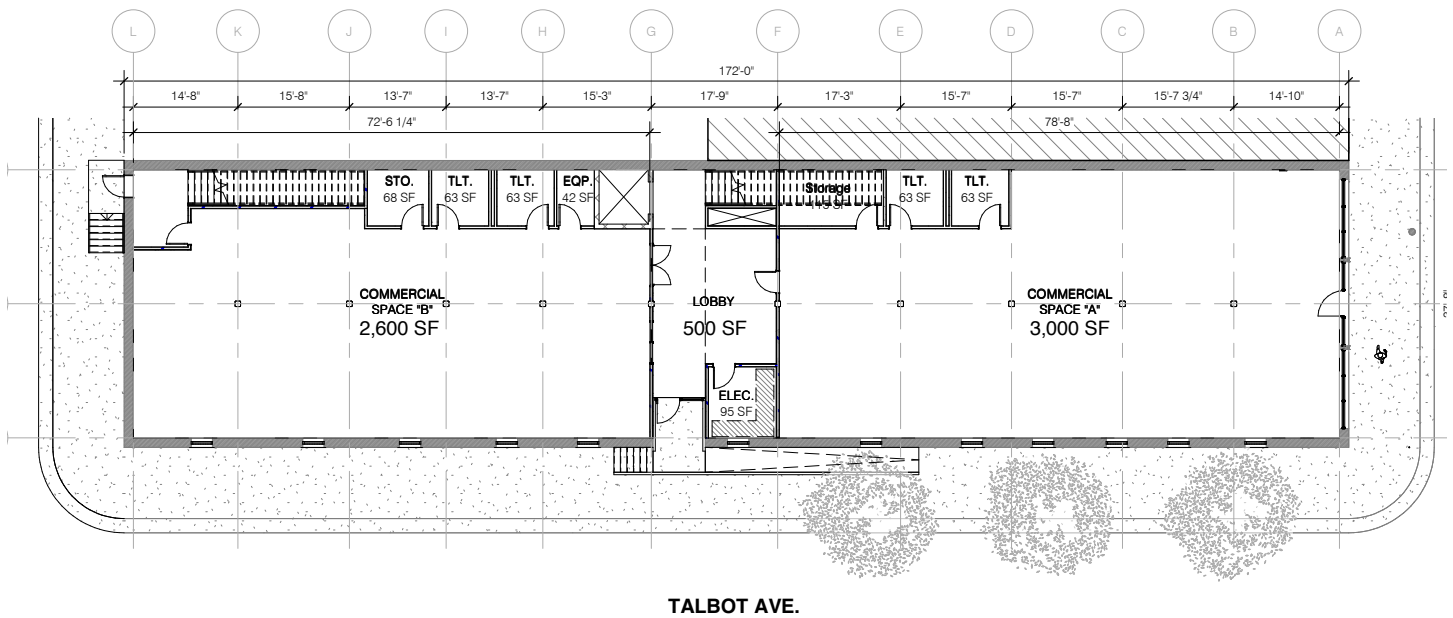
James H. McCraw, Vice President, Retail
D 901 410 5311
C 901 590 9997
james.mccraw@avisonyoung.com

**5350 Poplar Avenue
Suite 205**
Memphis, TN 38119
901 231 1400

SHELL



CONCEPTUAL BUILDOUT



Jeff Higdon, Vice President
 D 901 410 1784
 C 901 870 6740
 jeff.higdon@avisonyoung.com

James H. McCraw, Vice President, Retail
 D 901 410 5311
 C 901 590 9997
 james.mccraw@avisonyoung.com



5 minute walk time ●●●●●●●●●●

10 minute walk time ●●●●●●●●●●



Jeff Higdon, Vice President
 D 901 410 1784
 C 901 870 6740
 jeff.higdon@avisonyoung.com

James H. McCraw, Vice President, Retail
 D 901 410 5311
 C 901 590 9997
 james.mccraw@avisonyoung.com