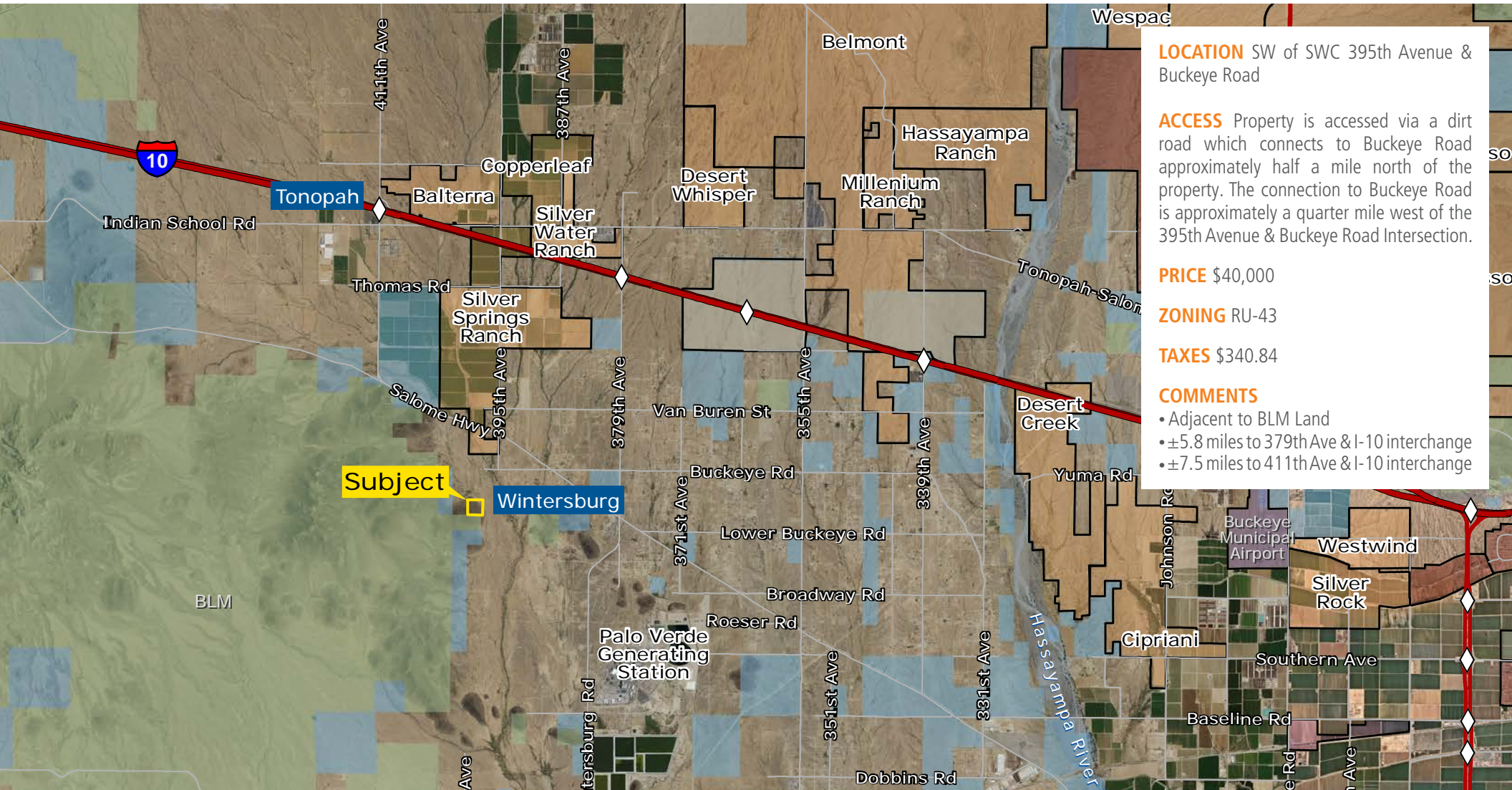


±40 ACRES 395TH AVE & BUCKEYE RD

EXCLUSIVE LISTING | MARICOPA COUNTY, AZ



LOCATION SW of SWC 395th Avenue & Buckeye Road

ACCESS Property is accessed via a dirt road which connects to Buckeye Road approximately half a mile north of the property. The connection to Buckeye Road is approximately a quarter mile west of the 395th Avenue & Buckeye Road Intersection.

PRICE \$40,000

ZONING RU-43

TAXES \$340.84

COMMENTS

- Adjacent to BLM Land
- ±5.8 miles to 379th Ave & I-10 interchange
- ±7.5 miles to 411th Ave & I-10 interchange

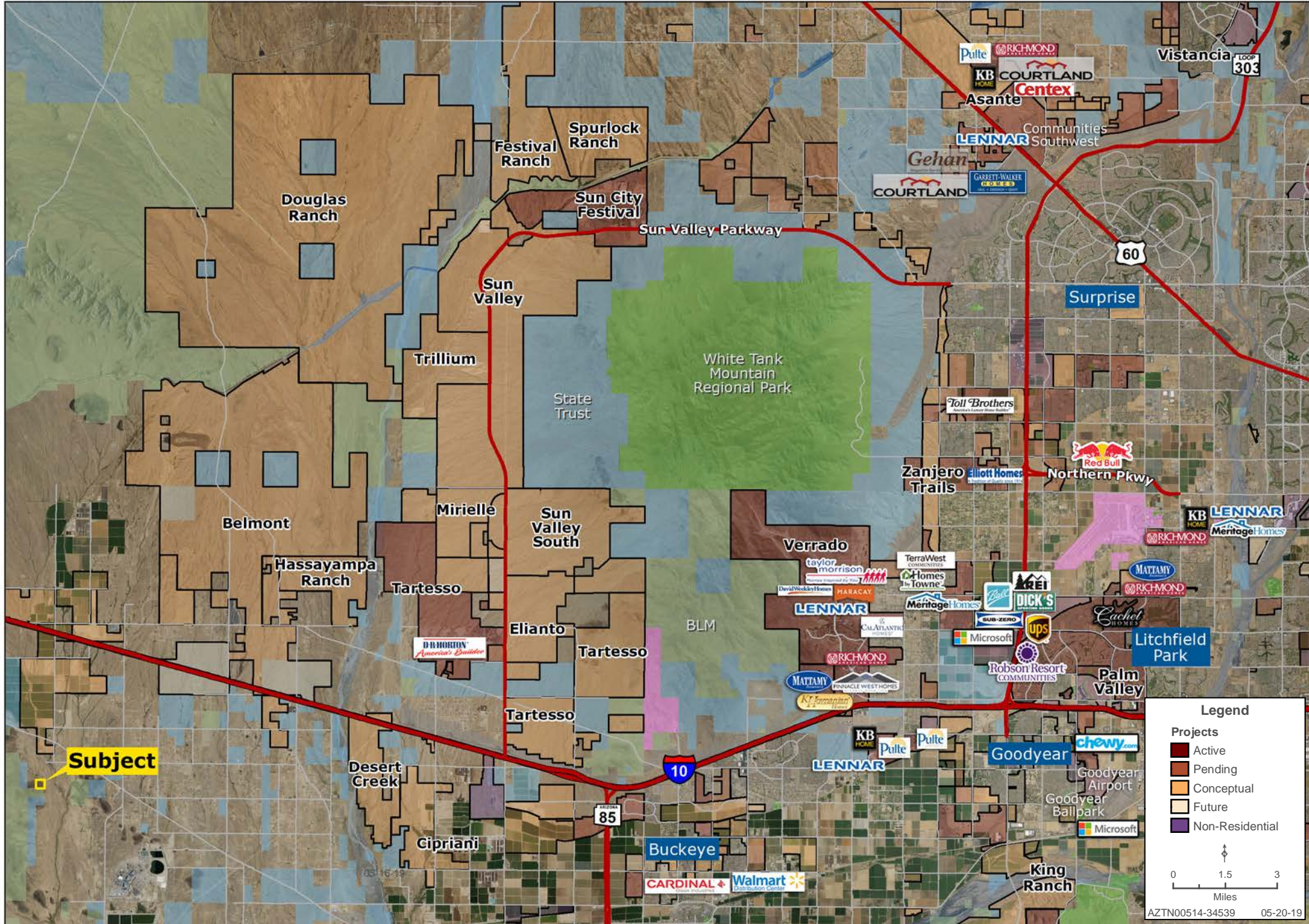
Max Xander | mxander@landadvisors.com

4900 North Scottsdale Road, Suite 3000, Scottsdale, Arizona 85251 ph. 480.483.8100 | www.landadvisors.com

The information contained herein is from sources deemed reliable. We have no reason to doubt its accuracy but do not guarantee it. It is the responsibility of the person reviewing this information to independently verify it. This package is subject to change, prior sale or complete withdrawal. AZTN00514 - 5.29.19

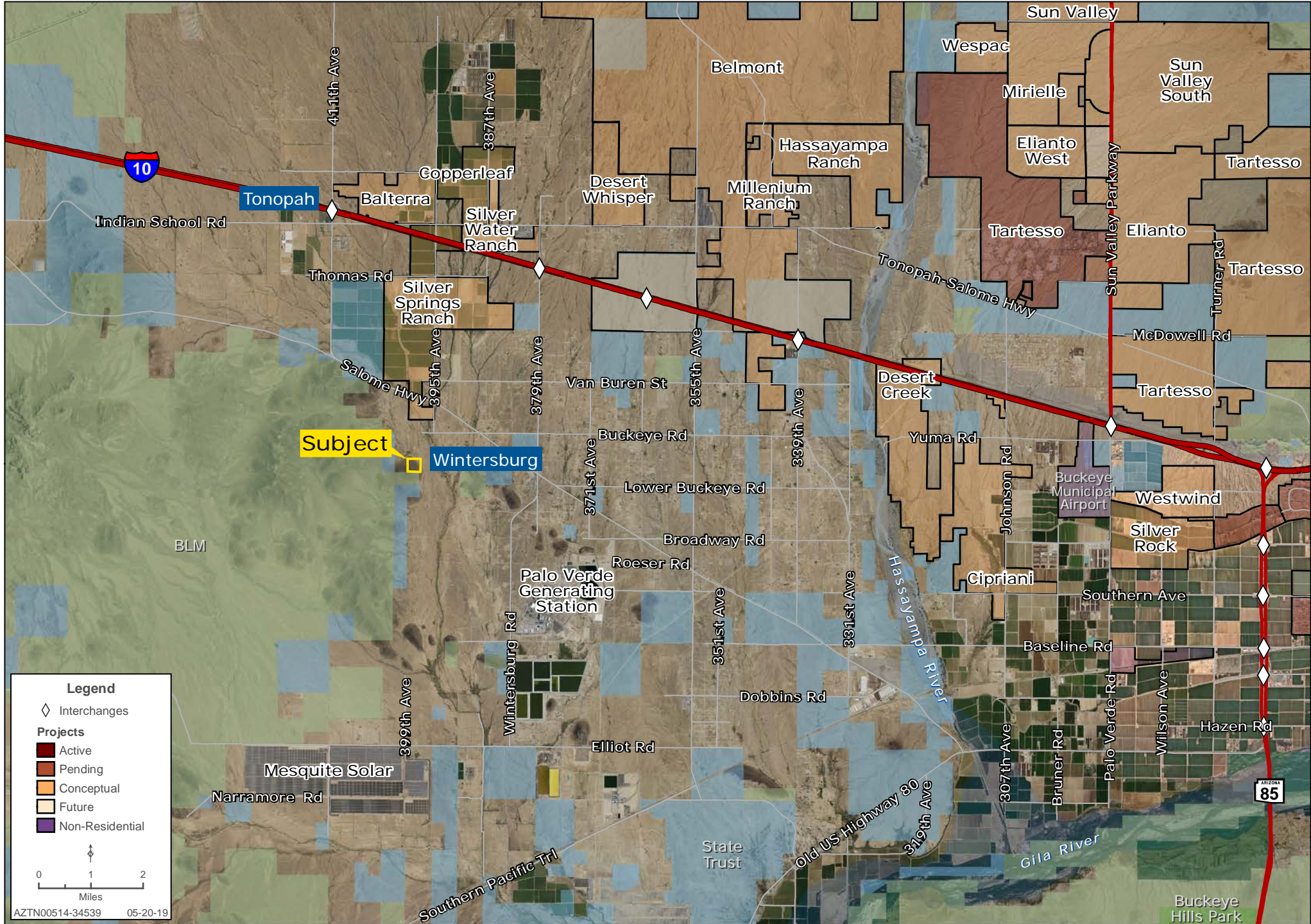
±40 ACRES 395TH AVE & BUCKEYE RD REGIONAL MAP

Wes Campbell | Max Xander | 480.483.8100 | www.landadvisors.com



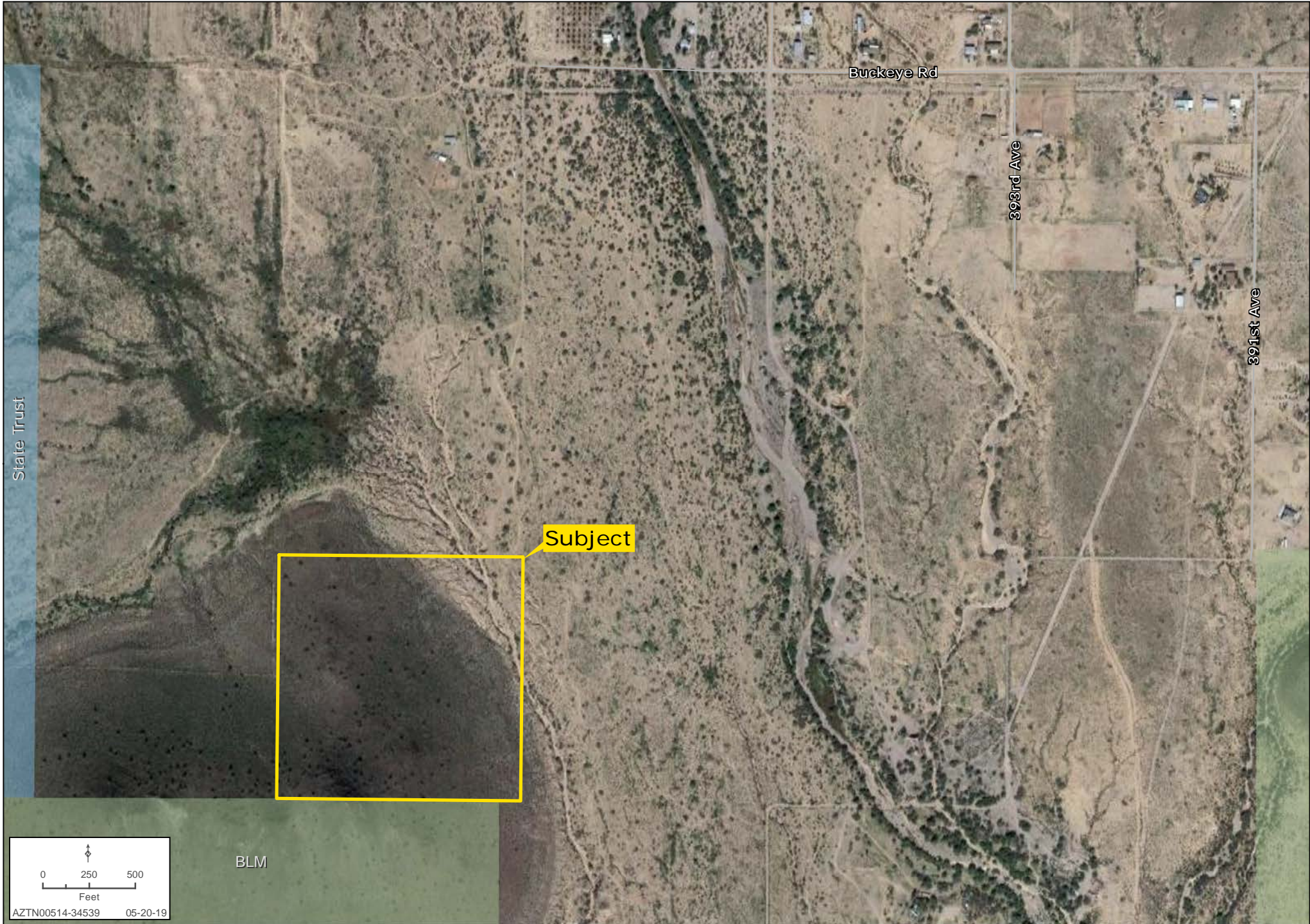
±40 ACRES 395TH AVE & BUCKEYE RD SURROUNDING AREA MAP

Wes Campbell | Max Xander | 480.483.8100 | www.landadvisors.com



±40 ACRES 395TH AVE & BUCKEYE RD PROPERTY DETAIL MAP

Wes Campbell | Max Xander | 480.483.8100 | www.landadvisors.com



±40 ACRES 395TH AVE & BUCKEYE RD FLOODPLAIN MAP

Wes Campbell | Max Xander | 480.483.8100 | www.landadvisors.com

