

Millwell

221-239 Millwell Drive

Maryland Heights, MO 63043

6,683 SF OFFICE / WAREHOUSE AVAILABLE FOR LEASE



- **6,683 SF Available**
- 225 Millwell Drive
- 65% office finish
- Two docks
- 16' clear warehouse height
- Easy access to I-270 via Dorsett Road
- Adjacent to the City of Maryland Heights
- Located near the intersection of Dorsett Road and Millwell Drive
- Approximately one mile north of Westport Plaza amenities offering a variety of dining, entertainment and lodging venues
- Less than ten minutes from Lambert-St. Louis International Airport
- **LEASE RATE: \$6.25 PSF NNN**

HUTKIN DEVELOPMENT COMPANY

10829 Olive Boulevard
Suite 200
St. Louis, MO 63141

Telephone 314.872.9140
FAX 314.872.9001

Visit our website:
www.hutkin.com

CONTACT

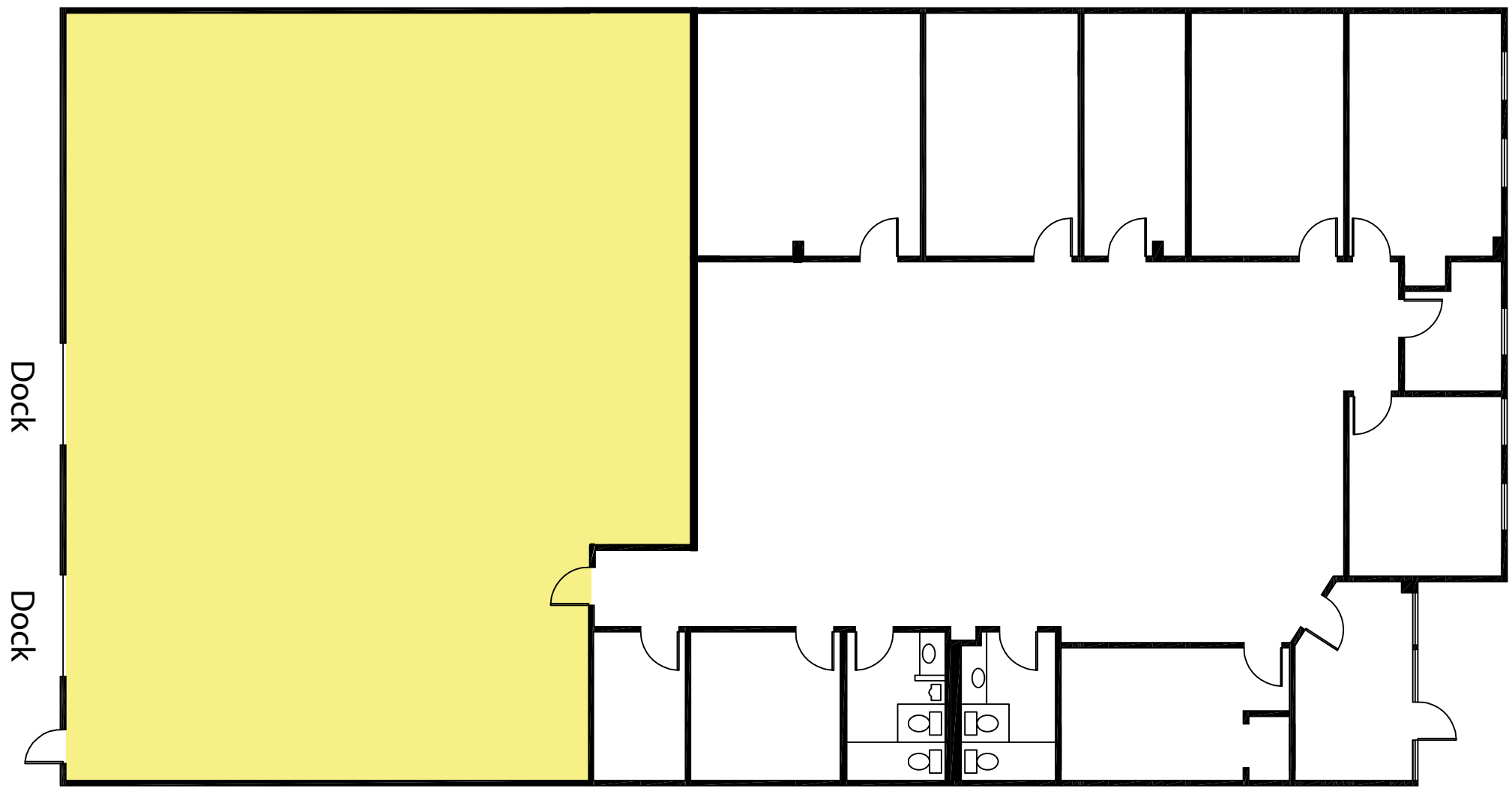
Tony Giarratano
tony@hutkin.com
Direct 314.708.4922
Cell 314.276.2352

Bo Keefer
bkeefer@hutkin.com
Direct 314.708.1258
Cell 314.973.1242

Millwell

221-239 Millwell Drive
Maryland Heights, MO 63043

**6,683 SF OFFICE / WAREHOUSE
AVAILABLE FOR LEASE**



225 Millwell Drive
6,683 SF

Millwell

221-239 Millwell Drive
Maryland Heights, MO 63043

6,683 SF OFFICE / WAREHOUSE AVAILABLE FOR LEASE

