

## St. Petersburg Medical



## PROPERTY HIGHLIGHTS

- Total Available Newly Renovated Medical Space: 4,736 SF
- First Floor: 2,166 SF Available
- Second Floor: 2,570 SF Available
- Rate: \$24.00 PSF/Modified Gross
- 5/1,000 Parking Ratio
- Modern medical office building located blocks from Bayfront Medical & All Children's and only minutes from St. Anthony's Hospital.
- Co-Tenancy with Lab Corp.



## CONTACT FOR MORE INFO:

Carleton Compton, CCIM  
Vice President, Brokerage  
Direct: 813.490.4812  
Mobile: 813.789.7729  
ccompton@equity.net

Equity  
4107 W. Spruce St., Suite 101  
Tampa, FL 33607  
www.equity.net



healthcare  
Commercial Real Estate Solutions®

**FOR LEASE**

501 Martin Luther King Jr. St. S  
St. Petersburg, FL 33705 | Pinellas County

## AERIAL MAP



**EXTERIOR SITE PHOTOS**



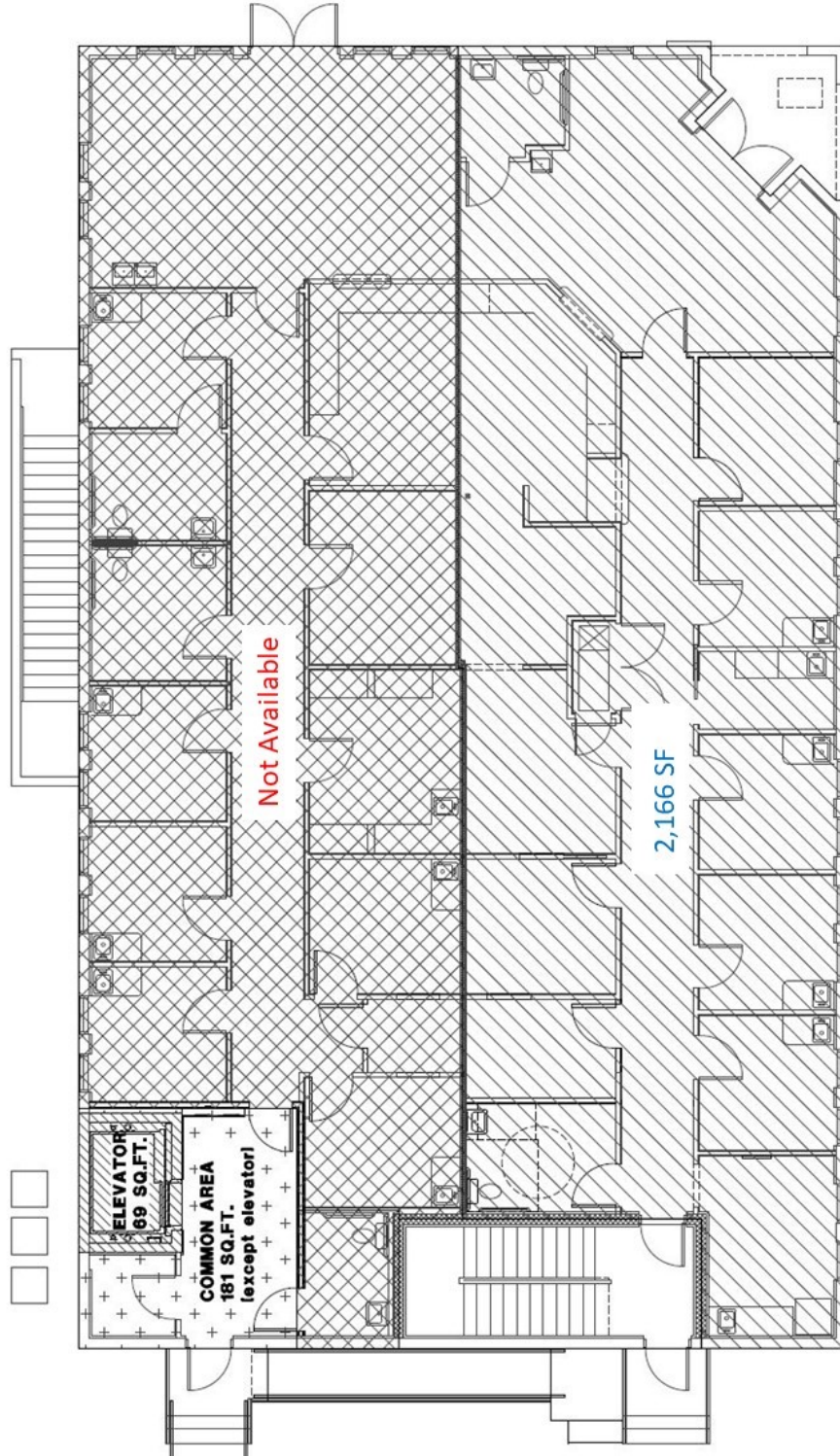


healthcare  
Commercial Real Estate Solutions®

**FOR LEASE**

501 Martin Luther King Jr. St. S  
St. Petersburg, FL 33705 | Pinellas County

**1ST FLOOR—2,166 SF AVAILABLE**



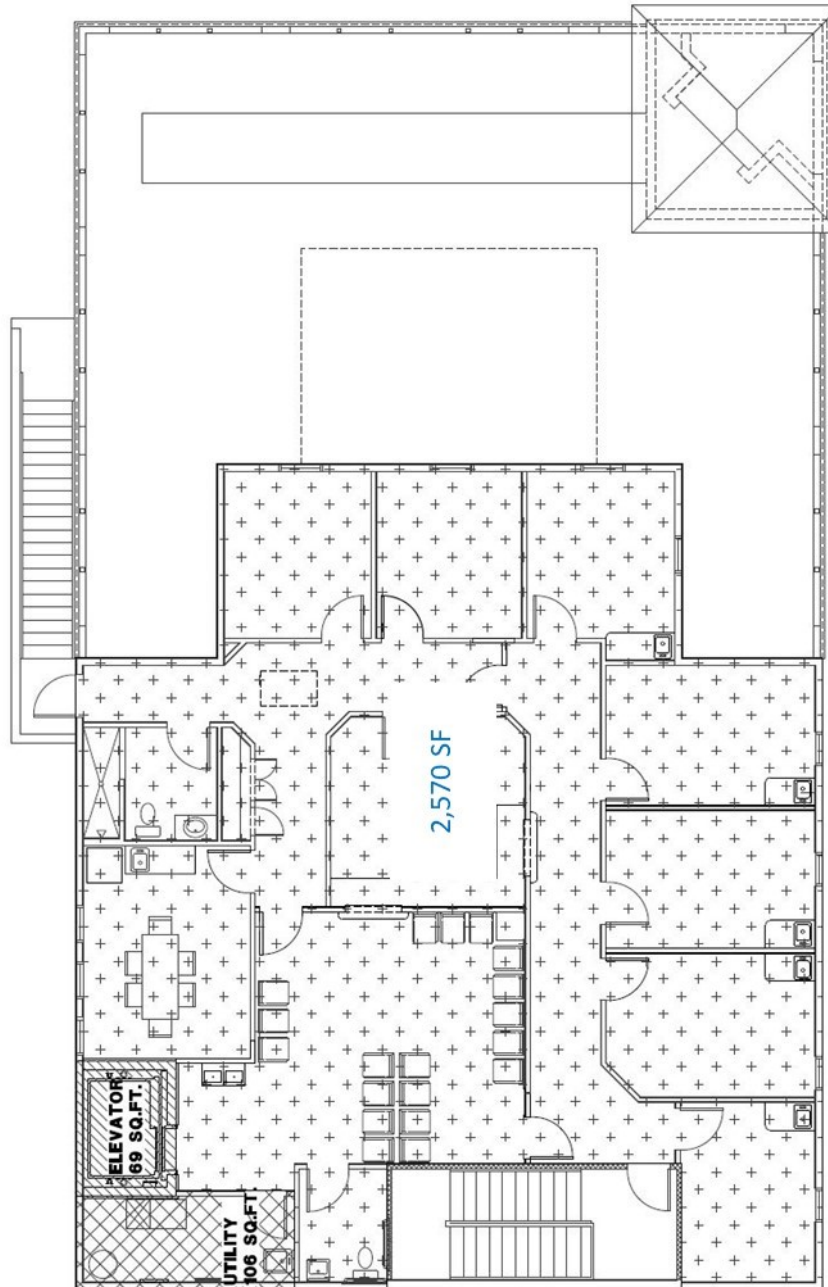


healthcare  
Commercial Real Estate Solutions®

**FOR LEASE**

501 Martin Luther King Jr. St. S  
St. Petersburg, FL 33705 | Pinellas County

## 2ND FLOOR—2,570 SF AVAILABLE



### CONTACT FOR MORE INFO:

Carleton Compton, CCIM  
Vice President, Brokerage  
Direct: 813.490.4812  
Mobile: 813.789.7729  
ccompton@equity.net

Equity  
4107 W. Spruce St., Suite 101  
Tampa, FL 33607  
www.equity.net