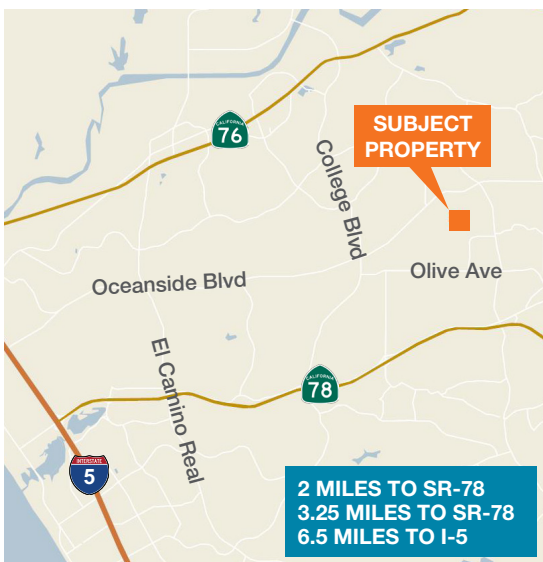




## ±28,053 SF Industrial Suite



±2,000 SF office

4 privates, large conference room, reception and 2 restrooms

22' - 24' clear height

Abundant power, 277/480 volts

Concrete driveway

Convenient access to Highway 78 and I-5 via Oceanside Blvd

Lease Rate: \$0.77 PSF NNN

(NNN = \$0.18 PSF)

4 grade doors

Dock loading can be added to accommodate user requirement

[kiddermathews.com](http://kiddermathews.com)

### Contact

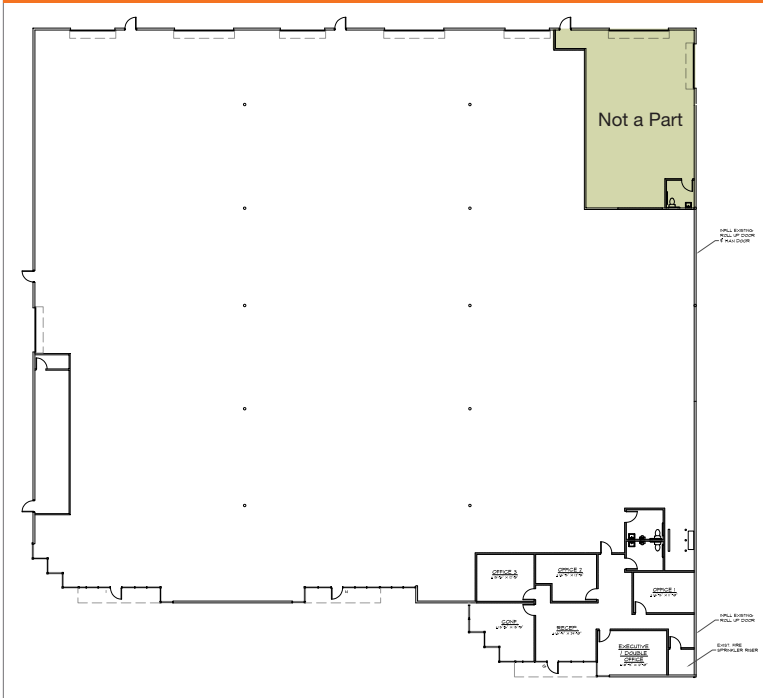
**Joseph S. McDermott**  
858.369.3012  
[joem@kiddermathews.com](mailto:joem@kiddermathews.com)  
LIC #01065784

**Ronald L. King, SIOR**  
858.369.3011  
[rking@kiddermathews.com](mailto:rking@kiddermathews.com)  
LIC #00868661

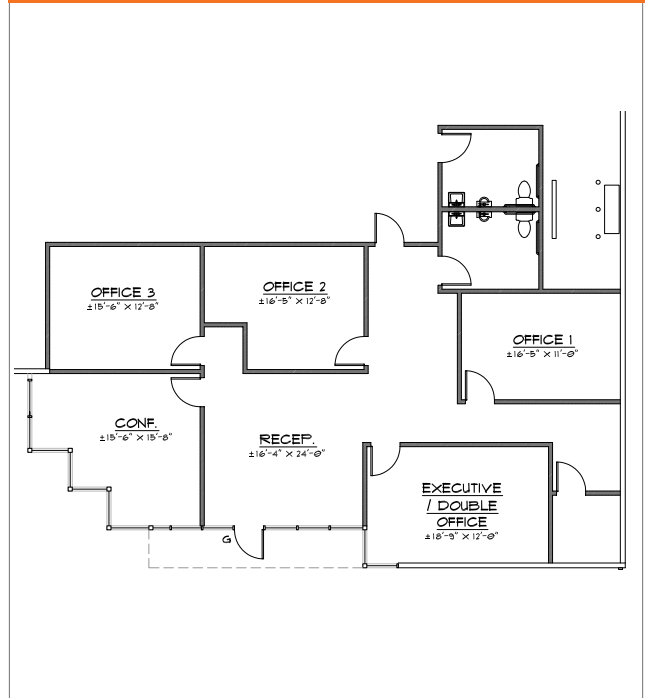
# For Lease

4665 North Avenue, Suite G, H, & I, Oceanside, CA 92056

## Floor Plan



## Office



## Contact

**Joseph S. McDermott**  
858.369.3012  
joem@kiddermathews.com  
LIC # 01065784

**Ronald L. King, SIOR**  
858.369.3011  
rking@kiddermathews.com  
LIC #00868661

[kiddermathews.com](http://kiddermathews.com)

This information supplied herein is from sources we deem reliable. It is provided without any representation, warranty or guarantee, expressed or implied as to its accuracy. Prospective Buyer or Tenant should conduct an independent investigation and verification of all matters deemed to be material, including, but not limited to, statements of income and expenses. Consult your attorney, accountant, or other professional advisor.

