



Property Features

- Three parcels totaling 4.30 acres for sale in Spotsylvania Courthouse
- 1.10 acre parcel has 1,763 SF commercial building previously used as a Medic-1, zoned C1
- 2.46 acres parcel has existing 1,200+ SF stone rambler currently used as a residence
- Parcels can be combined for larger redevelopment
- Highly visible corner adjacent to new Courthouse Village Project

Specifications

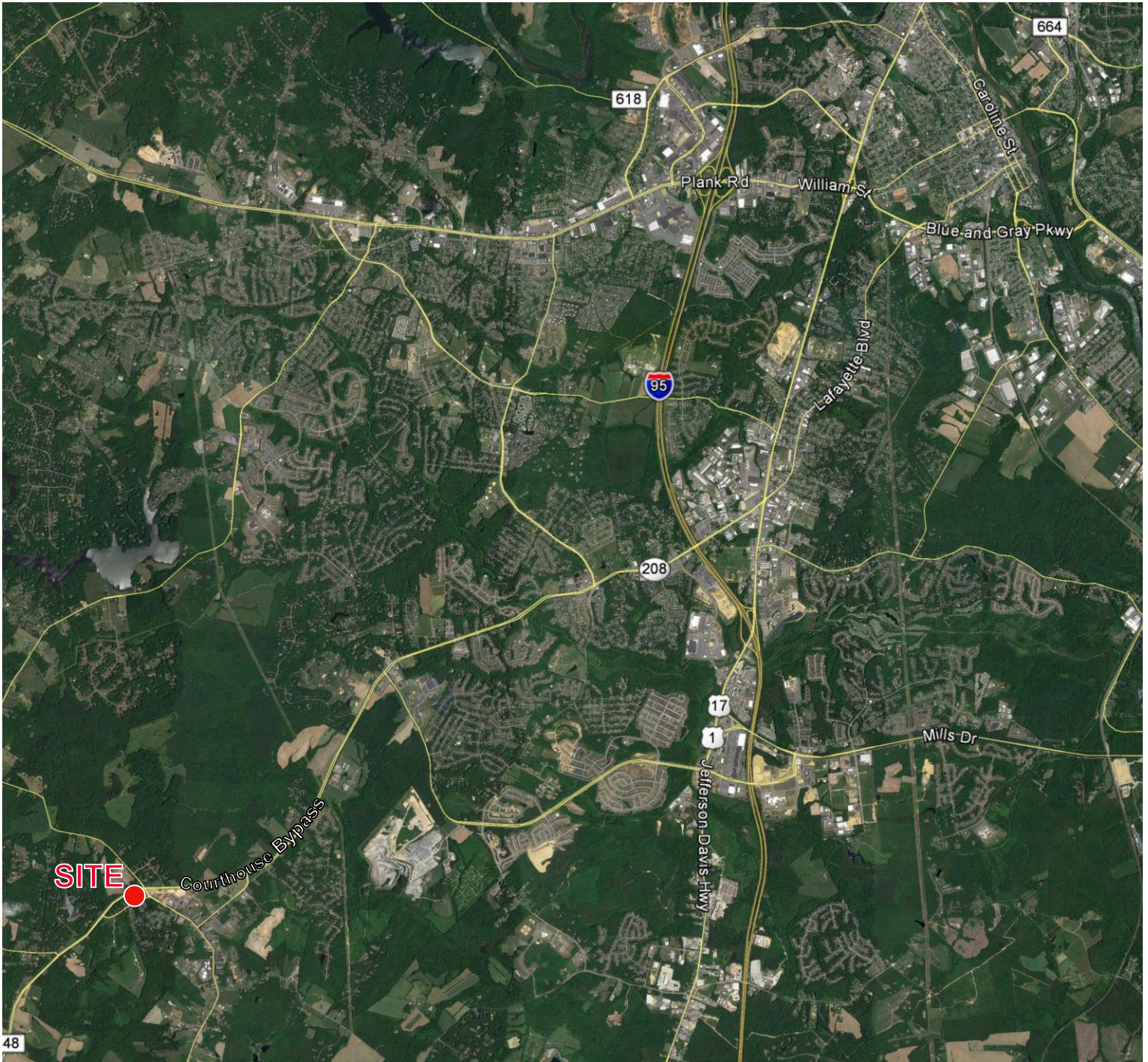
	Acres	Zoning	Price
All Parcels	4.30	C-1 & C-2	\$779,000
47-A-3A	2.46	C2	\$359,000
47-A-4	1.10	C1	\$359,000
47-A-3	0.74	C2	\$199,000

For more information, contact:

BERKLEY MITCHELL
 540 322 4144
 berkley.mitchell@thalhimer.com

MIKE DEGEN
 540 322 4148
 mike.degen@thalhimer.com

Eagle Village
 1125 Jefferson Davis Highway, Suite 350
 Fredericksburg, VA 22401-8449
 www.thalhimer.com



For more information, contact:

BERKLEY MITCHELL
540 322 4144
berkley.mitchell@thalhimer.com

MIKE DEGEN
540 322 4148
mike.degen@thalhimer.com

Eagle Village
1125 Jefferson Davis Highway, Suite 350
Fredericksburg, VA 22401-8449
www.thalhimer.com