

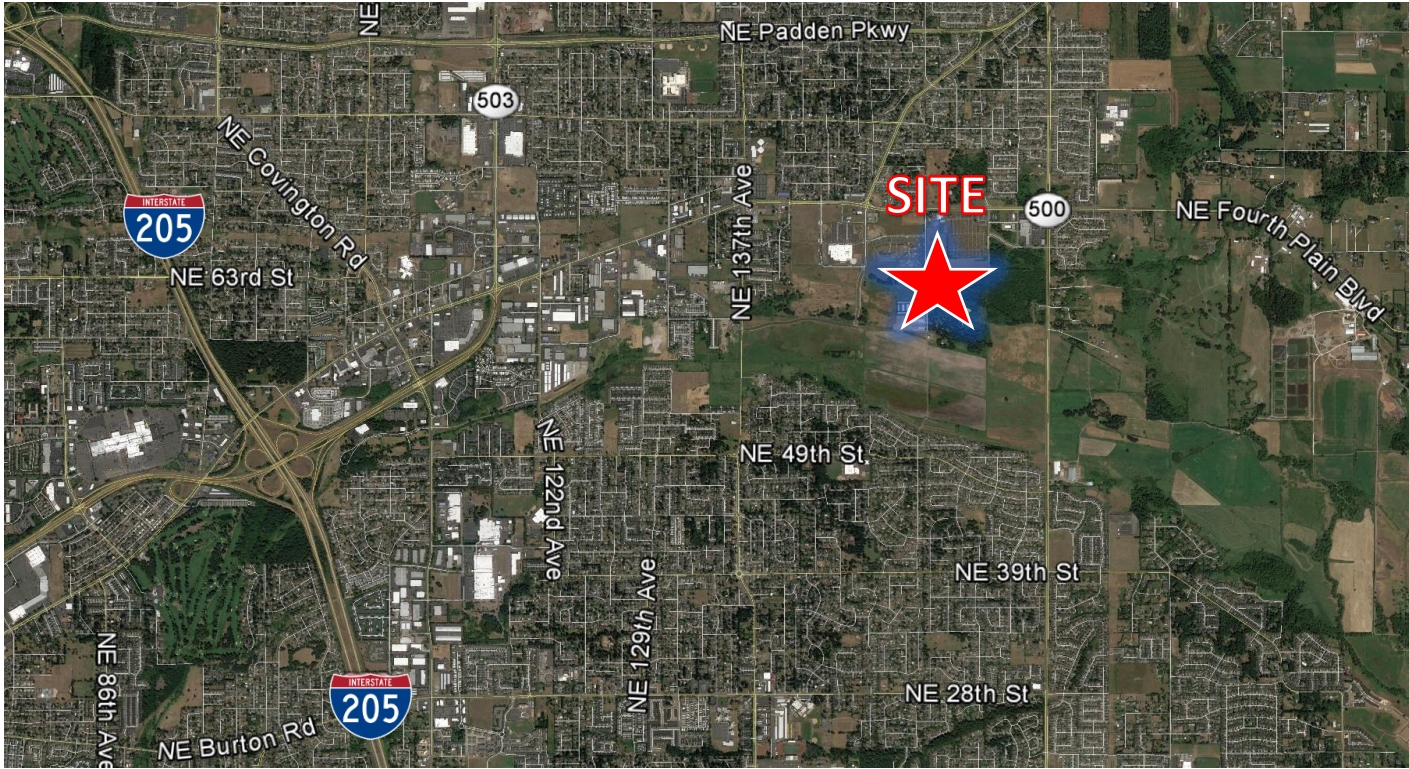
# FOR SALE

APPROXIMATELY 11.5 ACRES

6103 NE 152<sup>nd</sup> Avenue | Vancouver, WA 98682



900 Washington St, Suite 850, Vancouver, WA  
360.750.5595 | www.fg-cre.com



## PROPERTY HIGHLIGHTS

- Price: \$6,900,000
- Access: From S-14 – Exit NE 162nd Avenue to Fourth Plain, West to NE 152nd Ave  
From I-205 – Exit S-500 to Fourth Plain, east to NE 152nd Ave
- Zoning: Industrial – Light Industrial (I-L) City of Vancouver
- Acreage: 32.5 +/- gross acres, 11.5 +/- net acres
- Terms: All cash at closing



### FOR MORE INFORMATION:

Eric Fuller, CCIM | 360.597.0564 | efuller@fg-cre.com  
KC Fuller | 360.597.0569 | kfuller@fg-cre.com

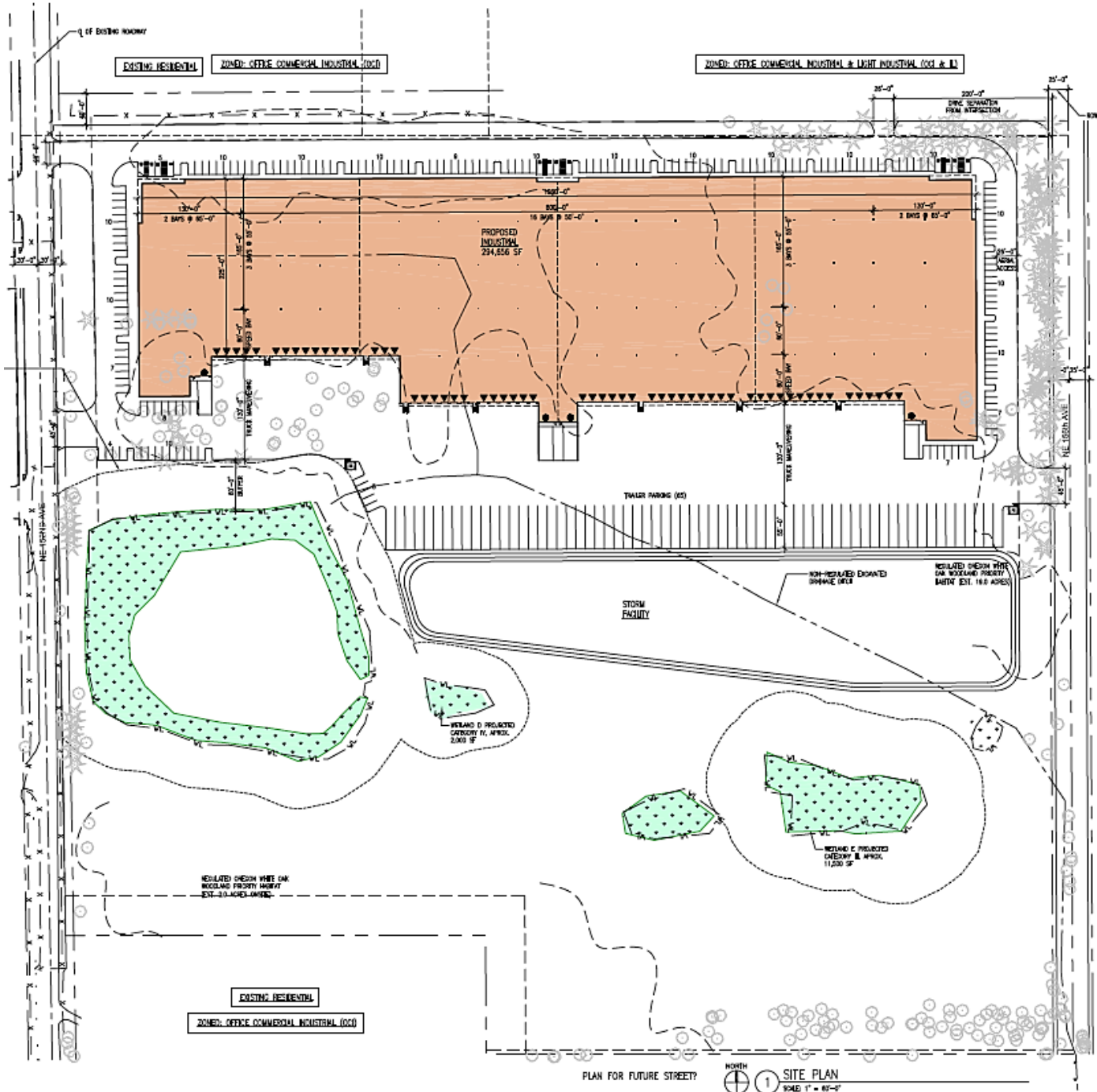
# FOR SALE

APPROXIMATELY 11.5 ACRES

6103 NE 152<sup>nd</sup> Avenue | Vancouver, WA 98682



900 Washington St, Suite 850, Vancouver, WA  
360.750.5595 | www.fg-cre.com



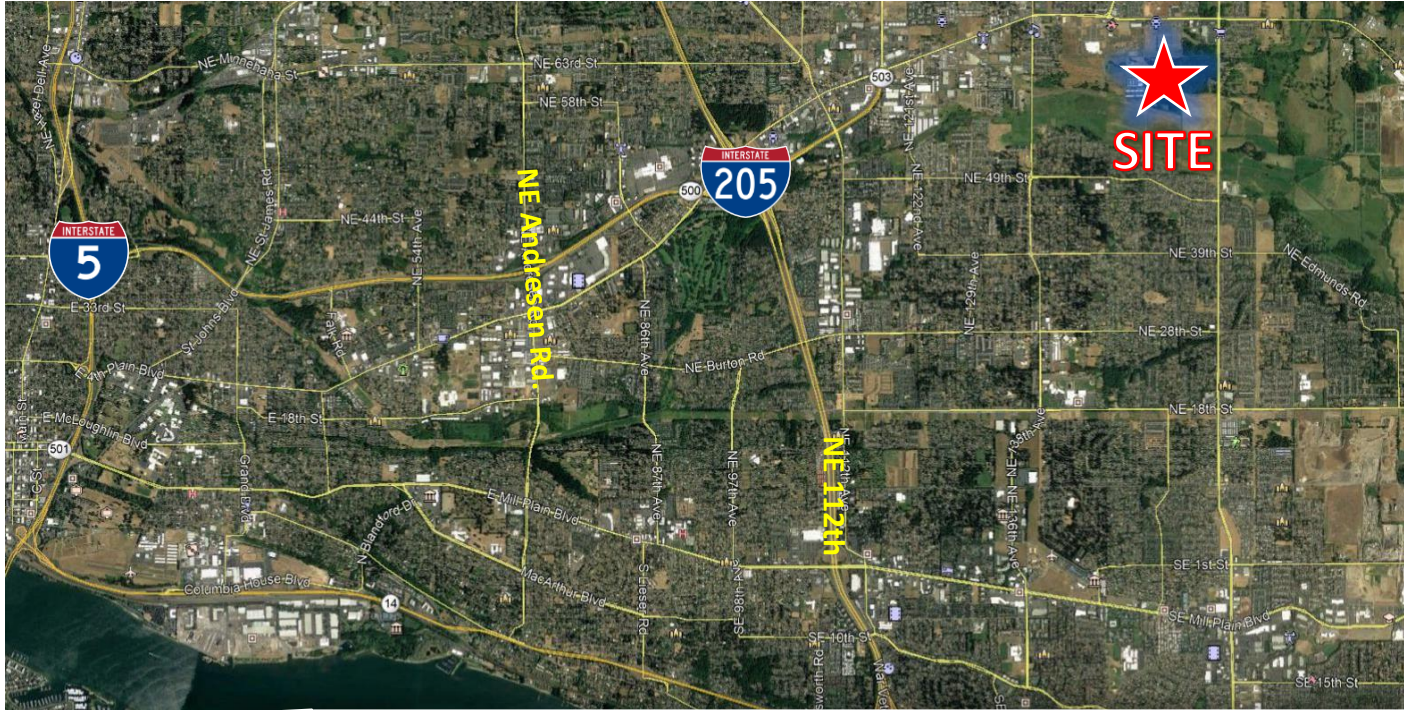
# FOR SALE

APPROXIMATELY 11.5 ACRES

6103 NE 152<sup>nd</sup> Avenue | Vancouver, WA 98682



900 Washington St, Suite 850, Vancouver, WA  
360.750.5595 | www.fg-cre.com



This statement with the information it contains is given with the understanding that all the negotiations relating to the purchase, rental or leasing of the property described above shall be conducted through this office. The above information, while not guaranteed, has been secured from sources we believe to be reliable.