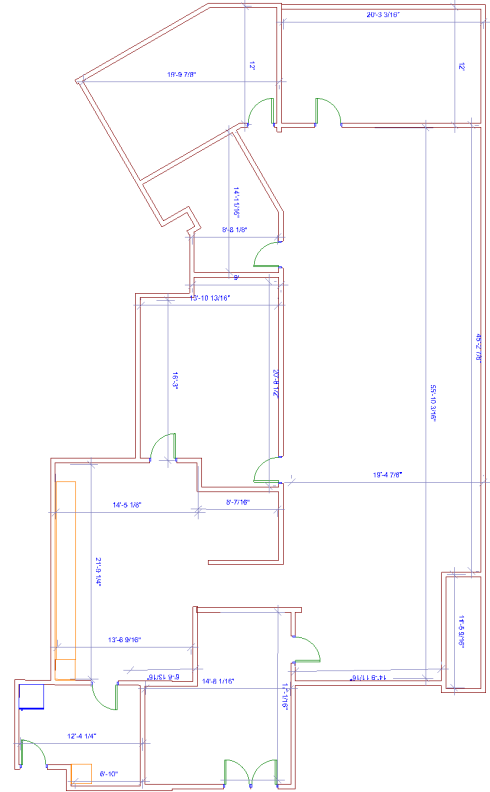




O'NEIL REAL ESTATE SERVICES
2265 Roswell Road



For Appointment, Please

Call Jeri O'Neil 770-235-2223

Highlights

- Highly visibly and accessible
- Executive suite services available
- Close to restaurants, banks, shopping
- Open Floor Plan with 3 executive office
- Tenant oriented owners and management
- Long Term tenants

Total Space Available:	3,360 SF
Rental Rate:	\$19.50 - \$59.93 /SF/Year
Min. Divisible:	160 SF
Max. Contiguous:	3,200 SF
Property Type:	Office
Property Sub-type:	Office Building
Building Size:	28,000 SF
Building Class:	B
Year Built:	1986
Lot Size:	2.40 AC
Zoning Description:	O&I

Description

Highly visible/accessible office building in East Cobb market. Full Service, short term, executive suite space available on the first and second floors of the building. Executive Suite Phone, Internet, Receptionist, Secretarial services provided by Ann Chambers AT YOUR SERVICE.

Long Term, conventional space available from 930 s.f.

Customer oriented owners, & management.

Office Building has exceptional visibility and road frontage on Roswell Road, (GA 120), major throughfare in East Cobb. Close to GA 120 Loop, Cobb Parkway, I-75, I-285. Close proximity to high end North Atlanta suburbs and residential markets.

2265 Roswell Road • Suite 500-A • Marietta, GA 30062
 Telephone: (770) 575-7502 • Fax: (770) 874-7839 • E-mail: oneilj@aol.com