

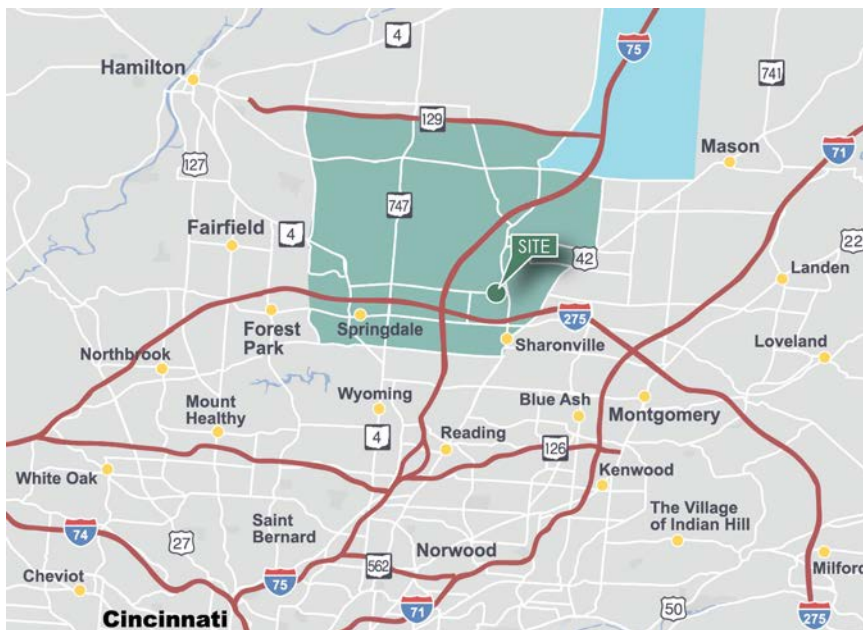
Prologis Sharonville

2909 Crescentville Road

West Chester, OH 45069



32,000 Square Feet Industrial Space For Lease



location

- Northern Cincinnati submarket
- Immediate access to I-75 and I-275
- ITC industrial zoning

facility

- 32,000 rentable sf
- 6,105 sf office
- Rear dock loading
- 24' clear height
- 40' x 40' typical bay sizes
- (3) 9' x 10' dock doors
- (1) 12' x 14' grade level door
- 130' truck court depth
- Concrete pre-cast construction
- ESFR sprinkler system
- 120/277/480 volt electric
- 6" reinforced concrete slab

DTZ

david.kelly, CCIM
david.kelly@dtz.com
ph +1 513.763.3009
cell +1 513.290.4651
221 East 4th St, 26th Floor
Cincinnati, OH 45202

DTZ

Tom McCormick, CCIM
tom.mccormick@dtz.com
ph +1 513.763.3025
cell +1 513.673.8025
221 East 4th St, 26th Floor
Cincinnati, OH 45202

Prologis

Alex Vulic
avulic@prologis.com
ph +1 614.275.5406
cell +1 614.271.0292
7048 Fairfield Business Drive
Fairfield, OH 45014

Prologis Sharonville

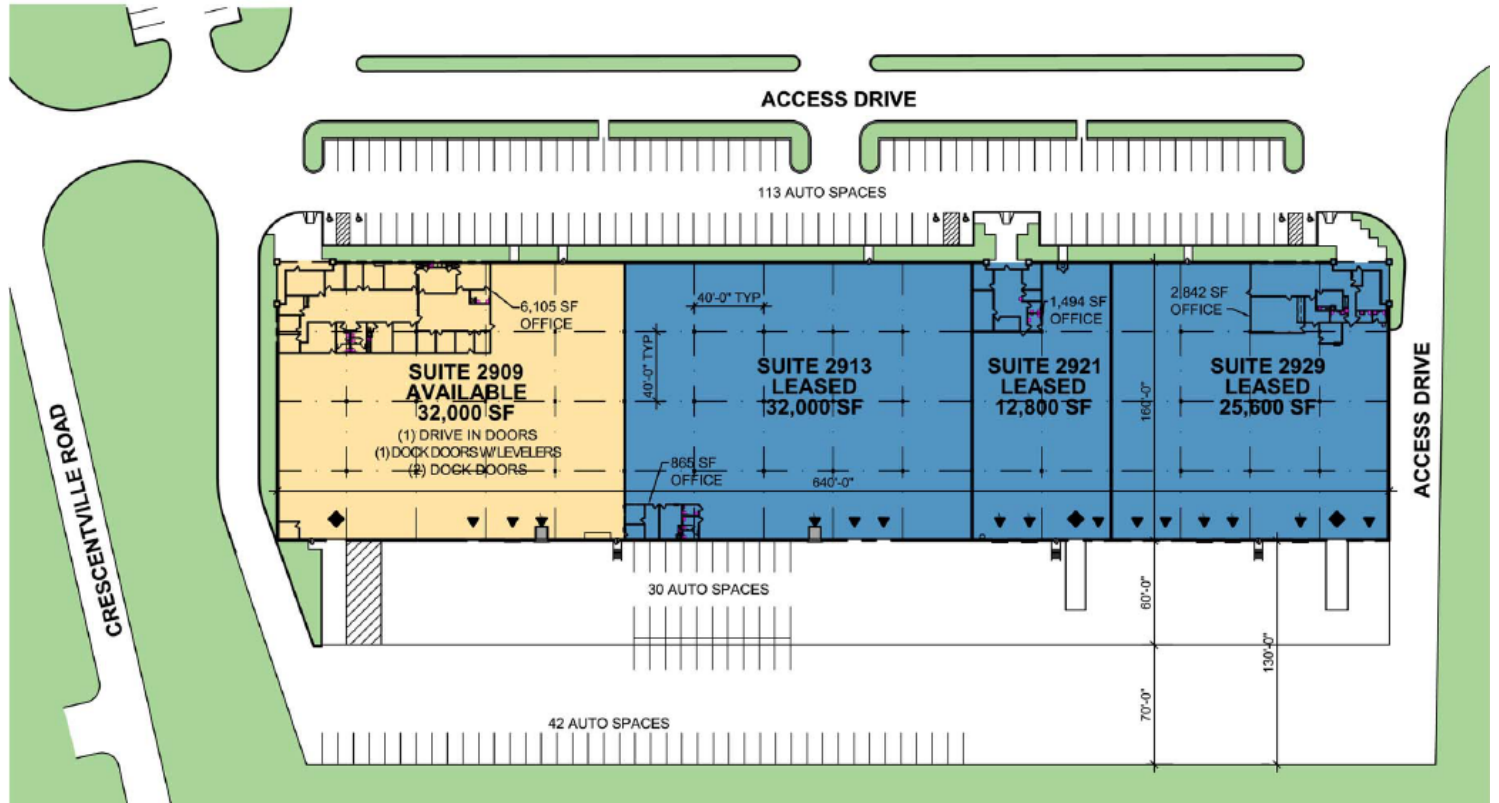
2909 Crescentville Road

West Chester, OH 45069



PROLOGIS

32,000 Square Feet Industrial Space For Lease



DTZ

david Kelly, CCIM
david.kelly@dtz.com
ph +1 513.763.3009
cell +1 513.290.4651
221 East 4th St, 26th Floor
Cincinnati, OH 45202

DTZ

Tom McCormick, CCIM
tom.mccormick@dtz.com
ph +1 513.763.3025
cell +1 513.673.8025
221 East 4th St, 26th Floor
Cincinnati, OH 45202

Prologis

Alex Vulic
avulic@prologis.com
ph +1 614.275.5406
cell +1 614.271.0292
7048 Fairfield Business Drive
Fairfield, OH 45014

Prologis Sharonville

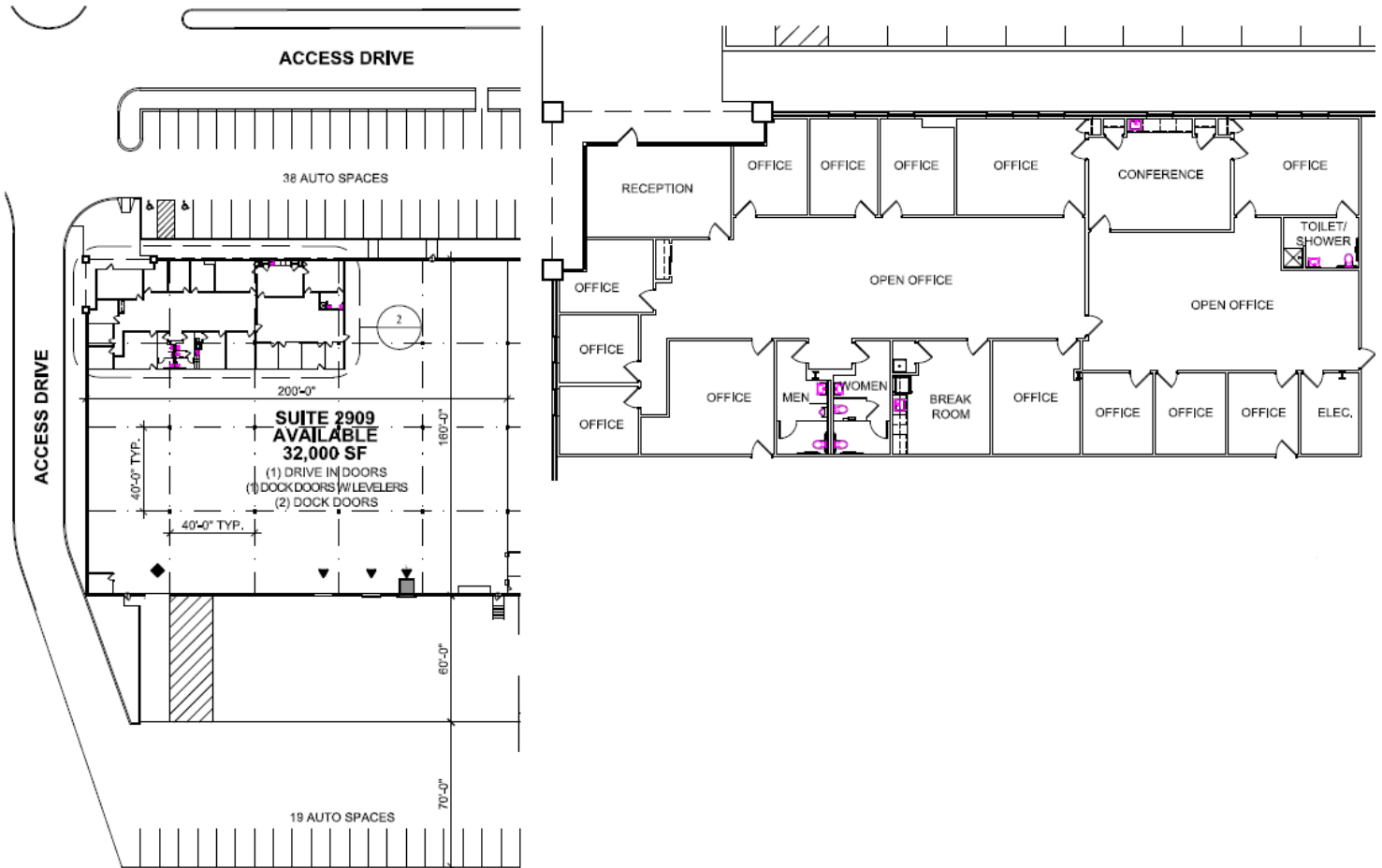
2909 Crescentville Road

West Chester, OH 45069



PROLOGIS

32,000 Square Feet Industrial Space For Lease



DTZ

David Kelly, CCIM
david.kelly@dtz.com
ph +1 513.763.3009
cell +1 513.290.4651
221 East 4th St, 26th Floor
Cincinnati, OH 45202

DTZ

Tom McCormick, CCIM
tom.mccormick@dtz.com
ph +1 513.763.3025
cell +1 513.673.8025
221 East 4th St, 26th Floor
Cincinnati, OH 45202

Prologis

Alex Vulic
avulic@prologis.com
ph +1 614.275.5406
cell +1 614.271.0292
7048 Fairfield Business Drive
Fairfield, OH 45014