

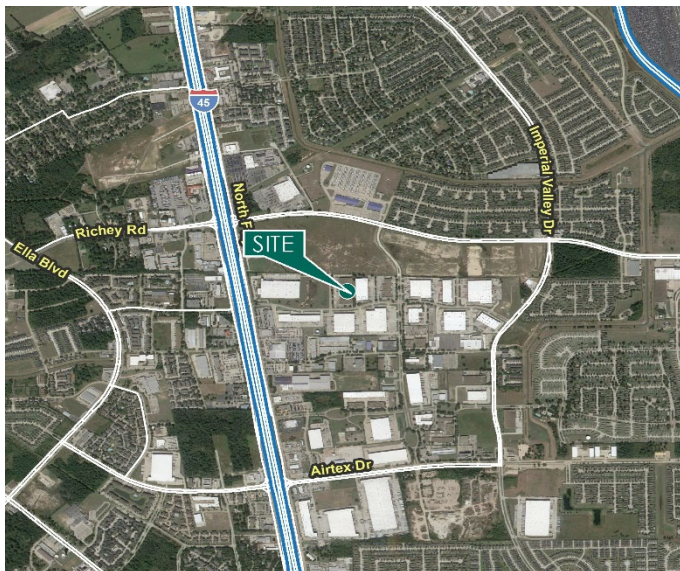
# 25,200 SF

## Industrial Space For Lease



## Prologis Northpark 1

333 Northpark Central Drive, Suite B  
Houston, TX 77073 USA



### LOCATION

- Conveniently located along I-45 North between Airtex Drive and Richey Road
- Easy access to I-45, Beltway 8 and the Hardy Toll Road
- Part of the master planned Prologis Park Northpark
- Unincorporated Harris County
- Double Freeport tax exemption

### FACILITY

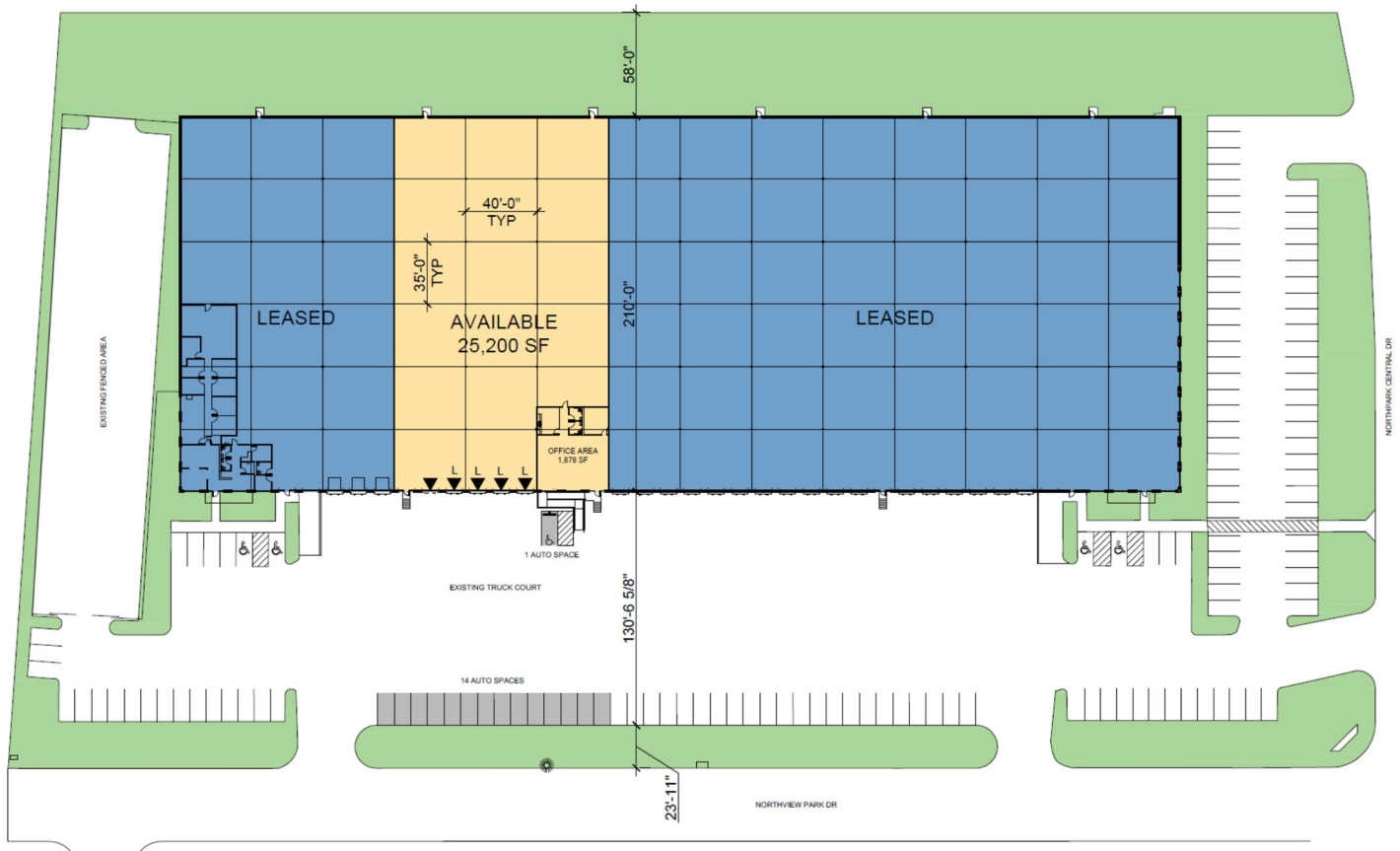
- 1,878 SF office
- 24' clear height
- 5 dock high doors (4 with levelers)
- 40' x 35' column spacing

### ADVANTAGES AND AMENITIES

- ESFR sprinkler system

# 25,200 SF

## Industrial Space For Lease



### Cushman & Wakefield

**Jason Dillee**

Jason.dillee@cushwake.com

ph +1 713 345 1432

cell +1 832 741 0733

1330 Post Oak Blvd., Suite 2700

Houston, TX 77056 USA

### Cushman & Wakefield

**Nathan Wynne**

nathan.wynne@cushwake.com

ph +1 713 331 1431

cell +1 713 206 3881

1330 Post Oak Blvd., Suite 2700

Houston, TX 77056 USA

### Prologis

**Alicia Pillows**

anye@prologis.com

ph +1 713 613 6930

cell +1 713 409 13061

1296 North Post Oak Road

Houston, TX 77055 USA