



# Palm Coast Landing

[View Video](#)

## Nancy Sumner

Senior Director  
+1 904 861 1134  
nancy.sumner@colliers.com

## Katy Figg

Senior Director  
+1 904 861 1133  
katy.figg@colliers.com

Colliers  
76 S. Laura St., Suite 1500  
Jacksonville, FL 32202  
colliers.com/jacksonville

## Palm Coast Landing

5200 E. Highway 100 | Palm Coast, FL 32164

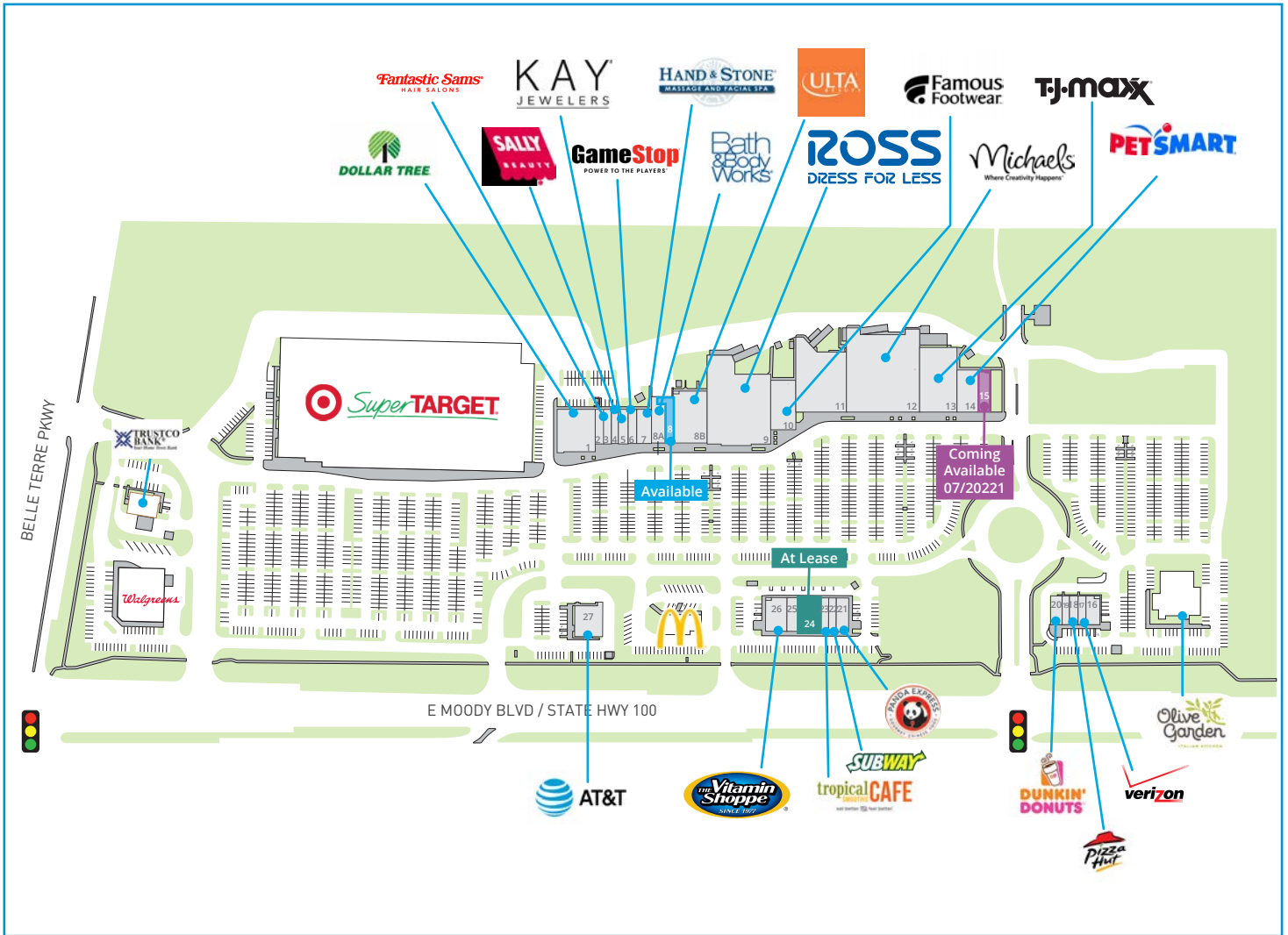
- 170,282± SF regional power center anchored by TJ Maxx, Ross, ULTA, PetSmart and Michaels, and shadow anchored by Super Target
- Inline opportunities available
- Multiple access points on Highway 100 and Belle Terre Pkwy. including signalized entrance
- Flagler-Palm Coast High School is adjacent with 2,532 students
- Advent Health Palm Coast, a 99-bed facility with 1,000± employees and Epic Theatres are within 1.5 miles
- The center serves Flagler County with a population of 115,602±

Traffic counts - Hwy 100: 21,500± AADT / Belle Terre Pkwy: 21,500± AADT

Copyright © 2021 Colliers International. Information herein has been obtained from sources deemed reliable, however its accuracy cannot be guaranteed. The user is required to conduct their own due diligence and verification.

# Property Site Plan

Palm Coast Landing | For Lease



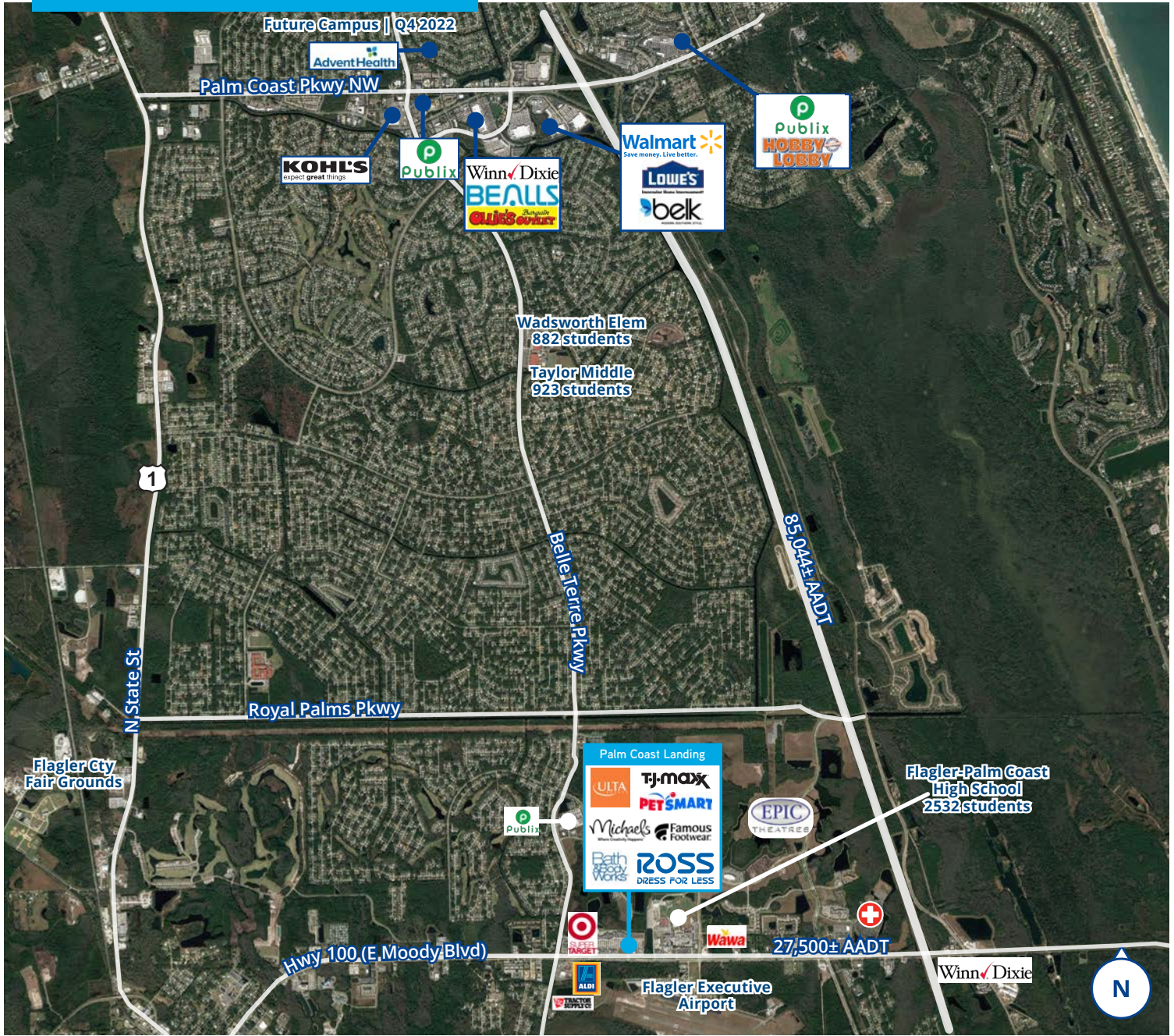
## Availability

Suite	Tenant	SF	Suite	Tenant	SF	Suite	Tenant	SF
1	Dollar Tree	9,000	9	Ross Dress For Less	27,154	19	Lee Spa & Nails	1,170
2	Pinch a Penny Pool Patio	1,600	10	Famous Footwear	6,960	20	Dunkin Donuts	1,755
3	Fantastic Sams	1,200	11	Michaels	17,551	21	Panda Express	2,184
4	Sally Beauty	1,600	12	TJ Maxx	26,000	22	Subway	1,404
5	KAY Jewelers	2,000	13	PetSmart	20,087	23	Tropical Smoothie Cafe	1,404
6	Game Stop	1,600	14	America's Best Contacts	5,000	24	<b>At Lease</b>	<b>4,056</b>
7	Hand & Stone Massage	2,800	15	<b>Coming Available 7/22</b>	<b>3,030</b>	25	Palm Coast Dental	2,340
8	<b>Available</b>	<b>2,340</b>	16	Fancy Sushi & Grill	1,967	26	The Vitamin Shoppe	2,340
8A	Bath & Body Works	3,200	17	Wireless Zone	1,235	27	AT&T	4,500
8B	ULTA Beauty	10,030	18	Pizza Hut	1,300	28	Trustco Bank	3,475

GLA: 170,282

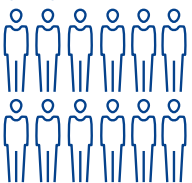
# Property Overview

**Palm Coast Landing | For Lease**



## Demographics

2020 population



3 mile: 25,528  
5 mile: 55,895  
MSA: 118,042

2020 Daytime Population



3 mile: 24,770  
5 mile: 50,665  
MSA: 109,704

2020 Avg. HH Income



3 mile: \$67,458  
5 mile: \$71,420  
MSA: \$80,080