

2572 Brunswick Pike, Lawrenceville, NJ

For Sale - Building & Equipment Available



195,720 SF INDUSTRIAL BUILDING

- 40,000 SF GMP space, inventory available upon request
- 50,000 SF existing office
- 14' clear ceilings
- 6 loading docks, 1 drive-in door
- Heavy power
- Ample car and/or trailer parking
- HVAC throughout entire building
- Wet sprinkler system
- Located on Route 1, just south of I-295 and Route 1 interchange



FOR INFORMATION, PLEASE CONTACT:

Steve Tolkach

Executive Managing Director
732.867.9550
stolkach@ngkf.com

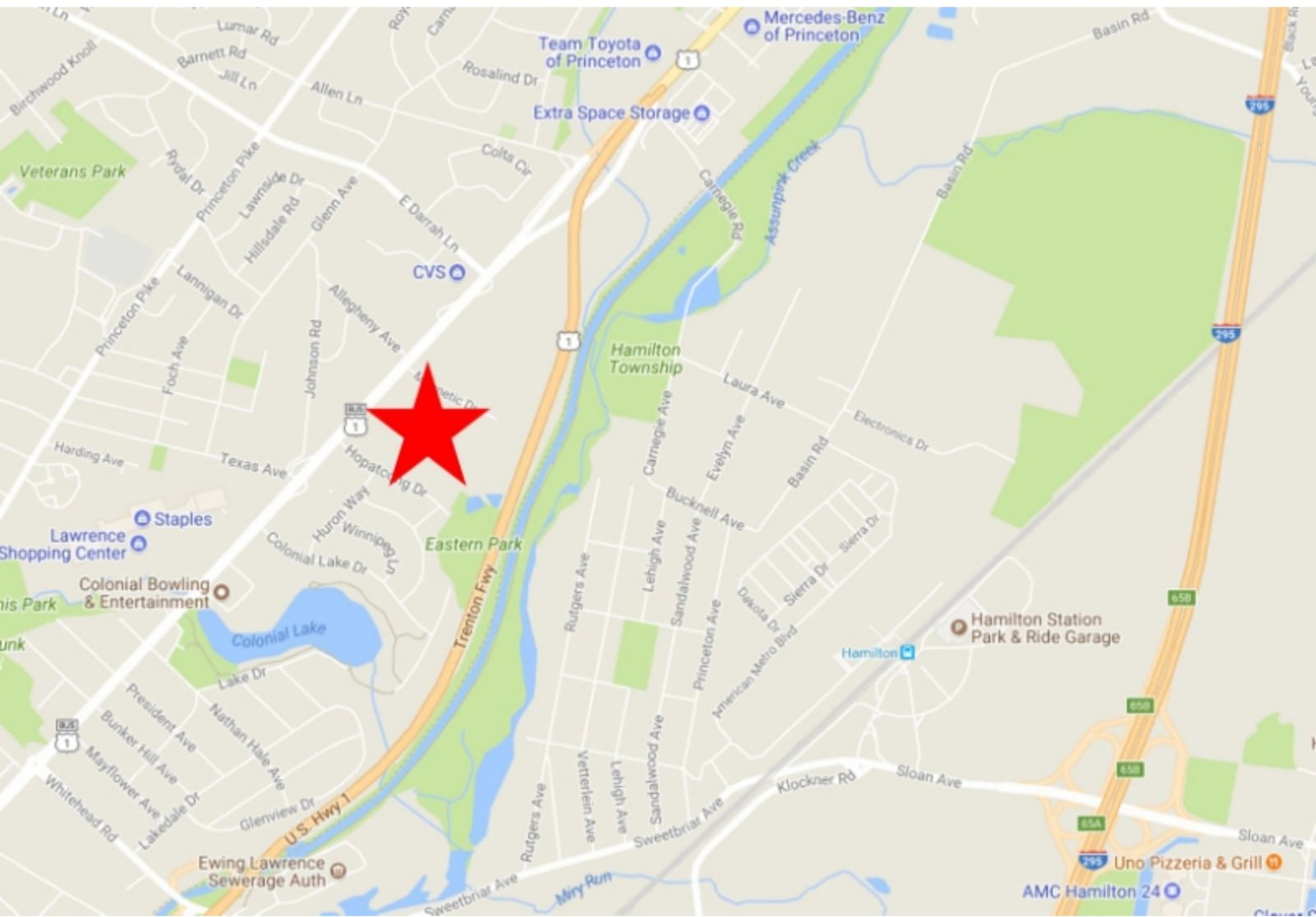
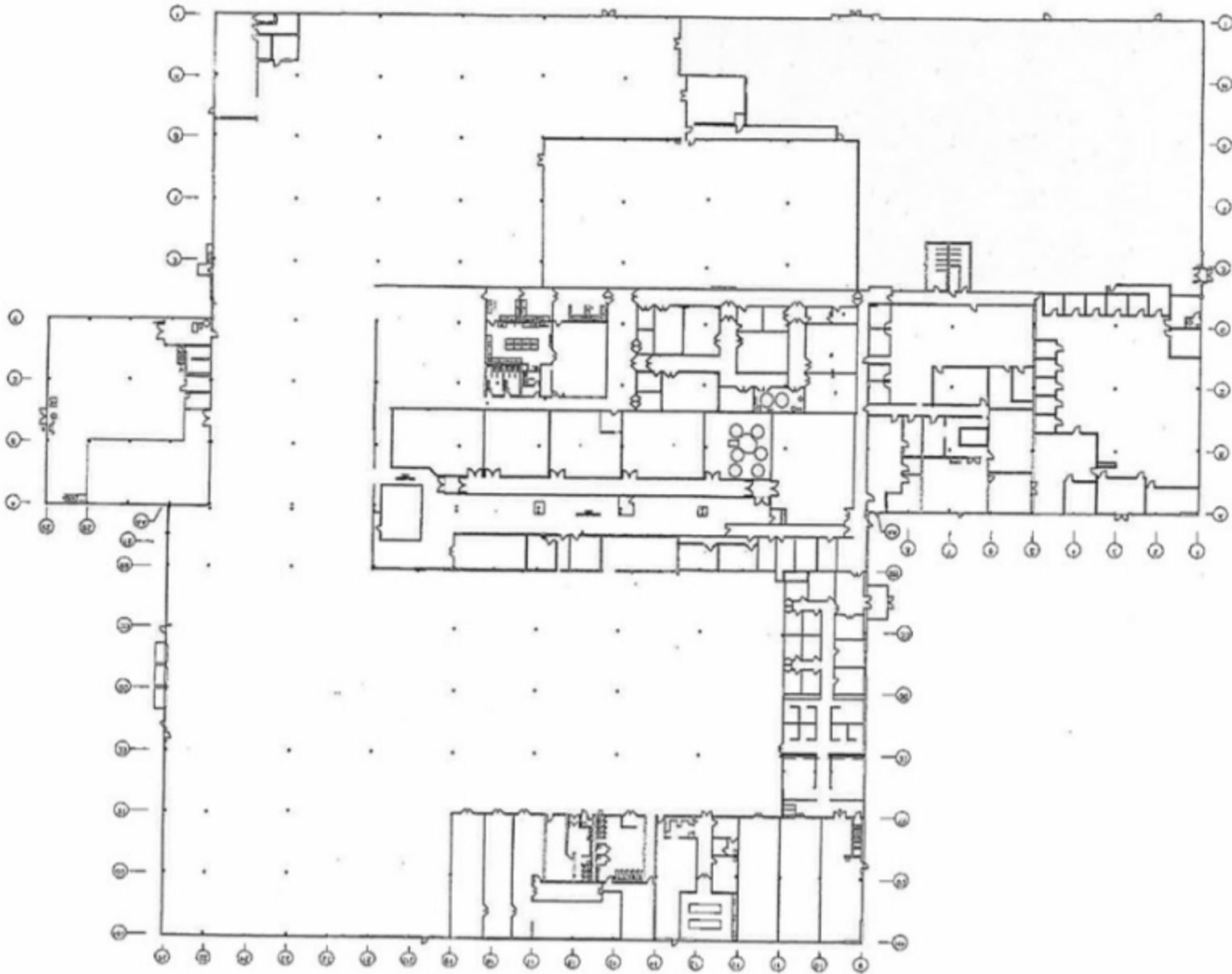
Kyle Eaton, SIOR

Managing Director
732.867.9556
keaton@ngkf.com

Rob Loderstedt

Director
732.867.9557
robert.loderstedt@ngkf.com





FOR INFORMATION, PLEASE CONTACT:

Steve Tolkach
Executive Managing Director
732.867.9550
stolkach@ngkf.com

Kyle Eaton, SIOR
Managing Director
732.867.9556
keaton@ngkf.com

Rob Loderstedt
Director
732.867.9557
robert.loderstedt@ngkf.com



1 Tower Center Boulevard Suite 2201, East Brunswick, NJ 08816 732.867.9001

The information contained herein has been obtained from sources deemed reliable but has not been verified and no guarantee, warranty or representation, either express or implied, is made with respect to such information. Terms of sale or lease and availability are subject to change or withdrawal without notice.