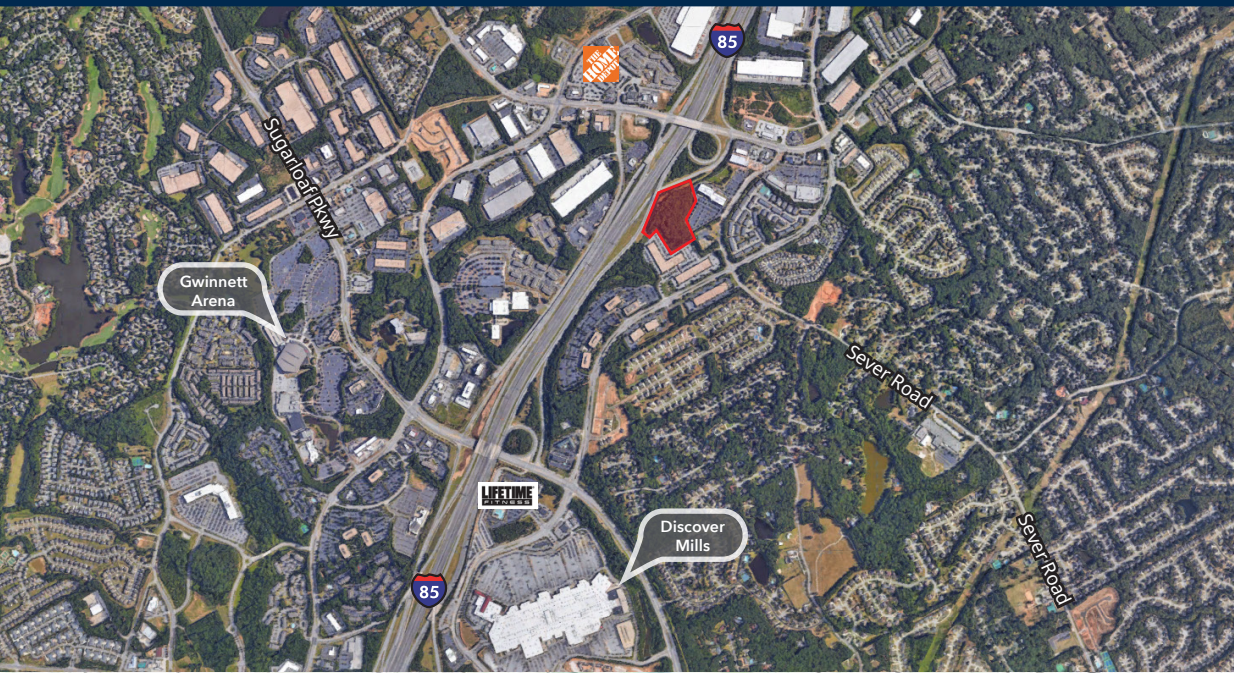


I-85 & SEVER ROAD



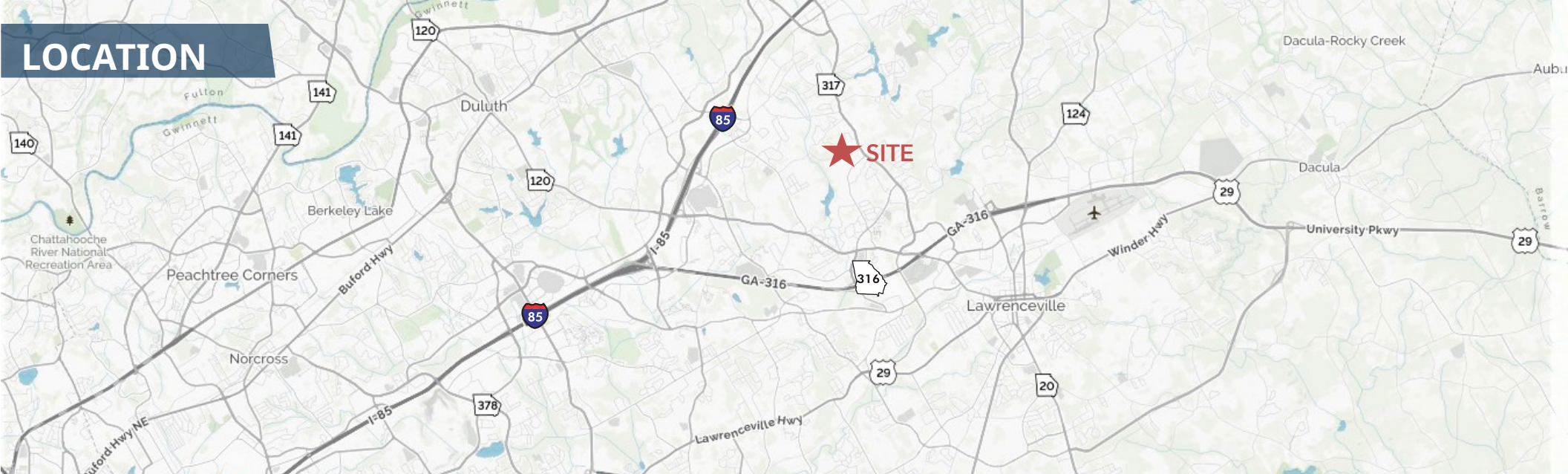
AVAILABILITY:

- + 9.96 Acres
- + Zoned O-1 in Gwinnett County
- + Potential uses include single or multi-story office

LOCATION:

- + Excellent access to I-85 & major arteries
- + Great visibility from I-85
- + All utilities in place

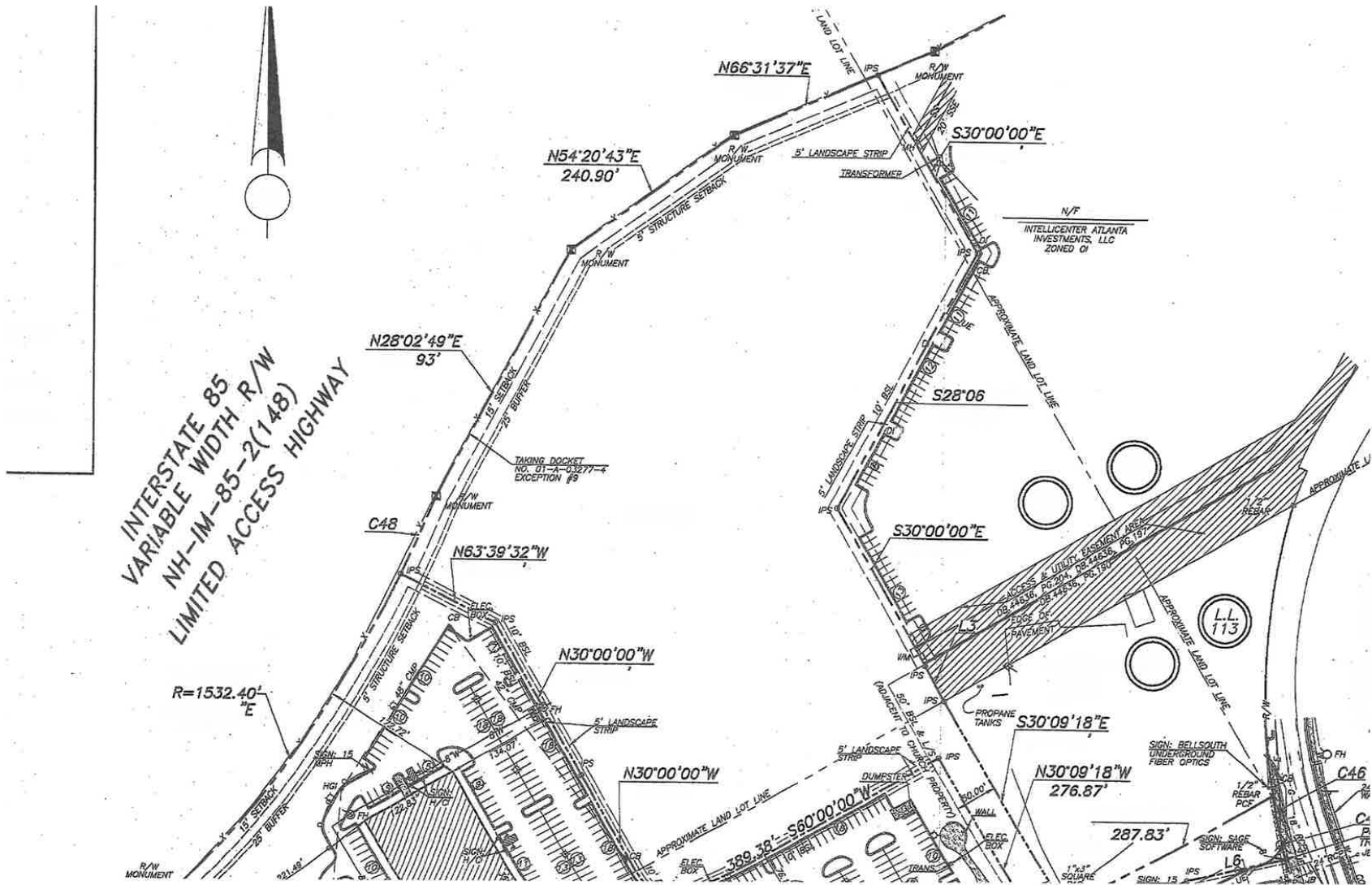
FOR SALE | 9.96 AC



KEITH GUTHRIE 404.790.7271 kguthrie@skcr.com



I-85 & SEVER ROAD | SITE PLAN



FOR SALE | 9.96 AC

KEITH GUTHRIE 404.790.7271 kguthrie@skcr.com



I-85 & SEVER ROAD | CONCEPT PLAN



FOR SALE | 9.96 AC

KEITH GUTHRIE 404.790.7271 kguthrie@skcr.com

