

505 PARK



MOVE-IN READY



5 MINUTE WALK TO CENTRAL PARK



PROXIMATE TO UPSCALE DINING



NEARBY FITNESS/WELLNESS OPTIONS

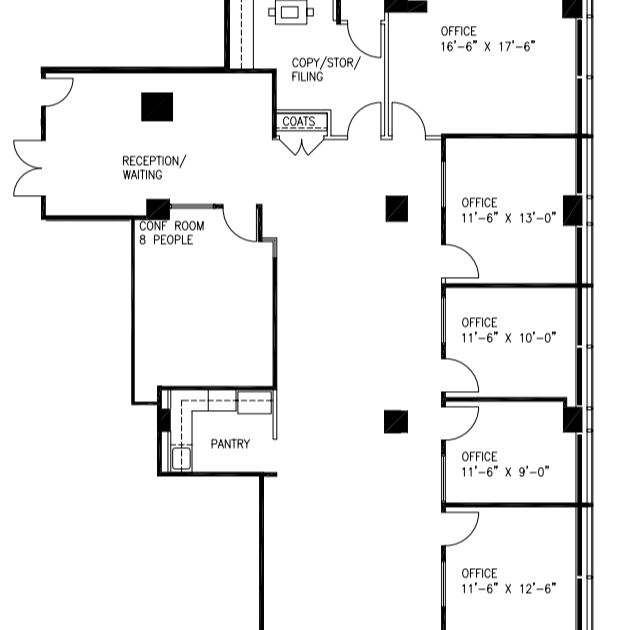
AVAILABILITIES

FLOOR	SIZE	CONDITION	CONFIGURATION	AVAILABILITY	VIRTUAL TOUR
P 2 Floor	3,977 RSF	Move-in	Built with 5 offices, 1 conference room and large open area	Immediate	-
P 14 Floor	1,973 RSF	Move-in	Built with 3 offices and 1 conference room	Immediate	-
P 18 Floor	5,264 RSF	Move-in	Built with 6 offices, 1 conference room, open area and a large wraparound terrace	Immediate	VIEW
E 20 Floor	6,136 RSF	Move-in	Built with 11 offices, 1 conference room, 1 breakout room, pantry and a large wraparound terrace	Immediate	-

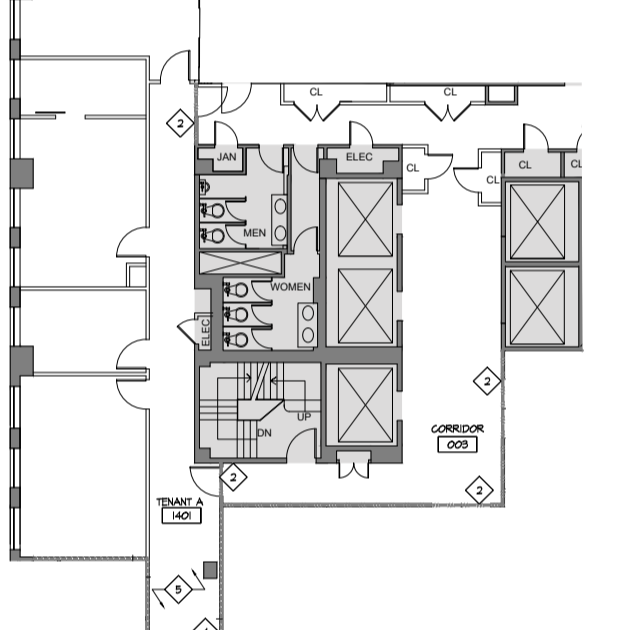


FLOOR PLANS

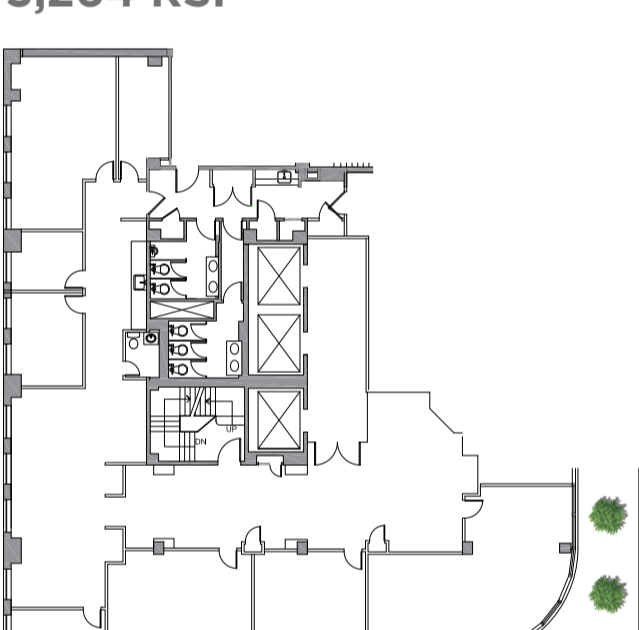
PARTIAL 2ND FLOOR 3,977 RSF



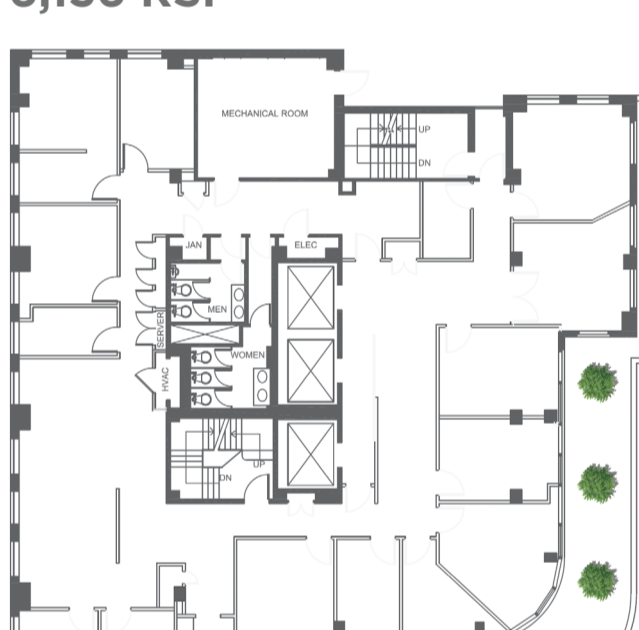
PARTIAL 14TH FLOOR 1,973 RSF



PARTIAL 18TH FLOOR 5,264 RSF



ENTIRE 20TH FLOOR 6,136 RSF



NEIGHBORHOOD/LOCATION



- | | | |
|---------------------------|----------------------|----------------------------------|
| 1. The Four Seasons Hotel | 11. BLT Steak | 21. The Bar Room |
| 2. TAO | 12. Piccola Cucina | 22. The Polo Bar |
| 3. LAVO | 13. Equinox | 23. The Museum of Modern Art |
| 4. Philippe Chow | 14. Sant Ambroeus | 24. Nobu |
| 5. Loews Regency | 15. Bloomingdales | 25. The Plaza Hotel |
| 6. The Colony Club | 16. Il Mulino | 26. The Ritz Carlton |
| 7. The Pierre | 17. Nello | 27. SoulCycle |
| 8. The Metropolitan Club | 18. Le Bibloquet | 28. Tracy Anderson Method Studio |
| 9. Avra | 19. The Lowell Hotel | |
| 10. Bergdorf Goodman | 20. Serafina | |