



SUBLEASE

15350 25th Avenue N.
Plymouth, MN 55447

SUBLEASE
9,500 SF AVAILABLE



Sublease Highlights

- 9,358 square foot sublease available through 12/31/2021, lease rate is \$13.00 Gross per square foot
- Space was newly built-out in 2015 and features a mix of privates and open space, two conference rooms, break area and fitness/game room area
- Excellent location near I-494 & Highway 55
- Area amenities include: Crown Plaza Hotel, Lifetime Fitness, Plymouth City Center, 15 area banks, Buffalo Wild Wings, Caribou Coffee, Starbucks, Chili's Grill & Bar, Famous Dave's, Italianni's, Kobe, Lucky 13, Noodles & Company, Old Chicago, Perkins Family Restaurant, Red Robin, Ruby Tuesday and Solos Pizza



Andrew Commers
Associate
+1 952 837 8482
andrew.commers@cushwake.com

Peter Fitzgerald
Executive Director
+1 952 241 1111
peter.fitzgerald@cushwake.com

Landon Helm
Senior Director
+1 612 659 1739
landon.helm@cushwake.com

3500 American Blvd W Suite 200
Minneapolis, MN 55431
Main +1 952 831 1000
cushmanwakefield.com

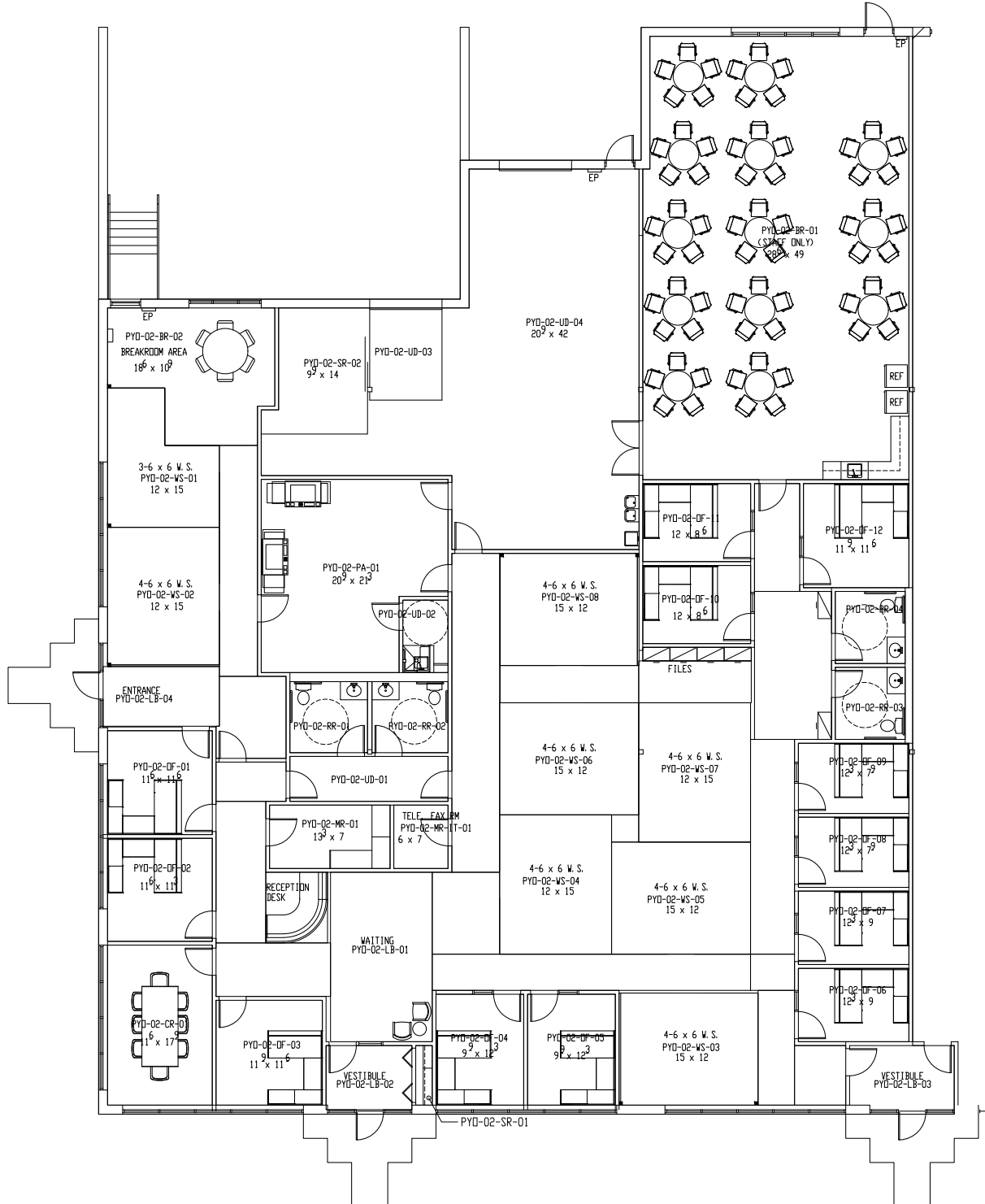


**CUSHMAN &
WAKEFIELD**

SUBLEASE

15350 25th Avenue N.

Plymouth, MN 55447



Andrew Commers
Associate
+1 952 837 8482
andrew.commers@cushwake.com

Peter Fitzgerald
Executive Director
+1 952 241 1111
peter.fitzgerald@cushwake.com

Landon Helm
Senior Director
+1 612 659 1739
landon.helm@cushwake.com

3500 American Blvd W Suite 200
Minneapolis, MN 55431
Main +1 952 831 1000
cushmanwakefield.com



SUBLEASE

15350 25th Avenue N.

Plymouth, MN 55447



Andrew Commers
Associate
+1 952 837 8482
andrew.commers@cushwake.com

Peter Fitzgerald
Executive Director
+1 952 241 1111
peter.fitzgerald@cushwake.com

Landon Helm
Senior Director
+1 612 659 1739
landon.helm@cushwake.com

3500 American Blvd W Suite 200
Minneapolis, MN 55431
Main +1 952 831 1000
cushmanwakefield.com