

MICHENER INVESTMENTS LLP

COMMERCIAL REAL ESTATE

DOWNTOWN BOISE OFFICE SPACE FOR LEASE



LOCATION: 1412 W. Idaho, Boise, Idaho.
(Northeast corner of 15th & Idaho.)

Price Reduced!

<u>Suite</u>	<u>Size</u>	<u>\$/Sq. Ft.</u>	<u>Rent</u>	<u>Comments</u>
#205	±930 Sq. Ft.	\$12.00	\$930/Month (Full Service w/Janitorial 2x/week)	3 private offices and storage room. Reception area

COMMENTS:

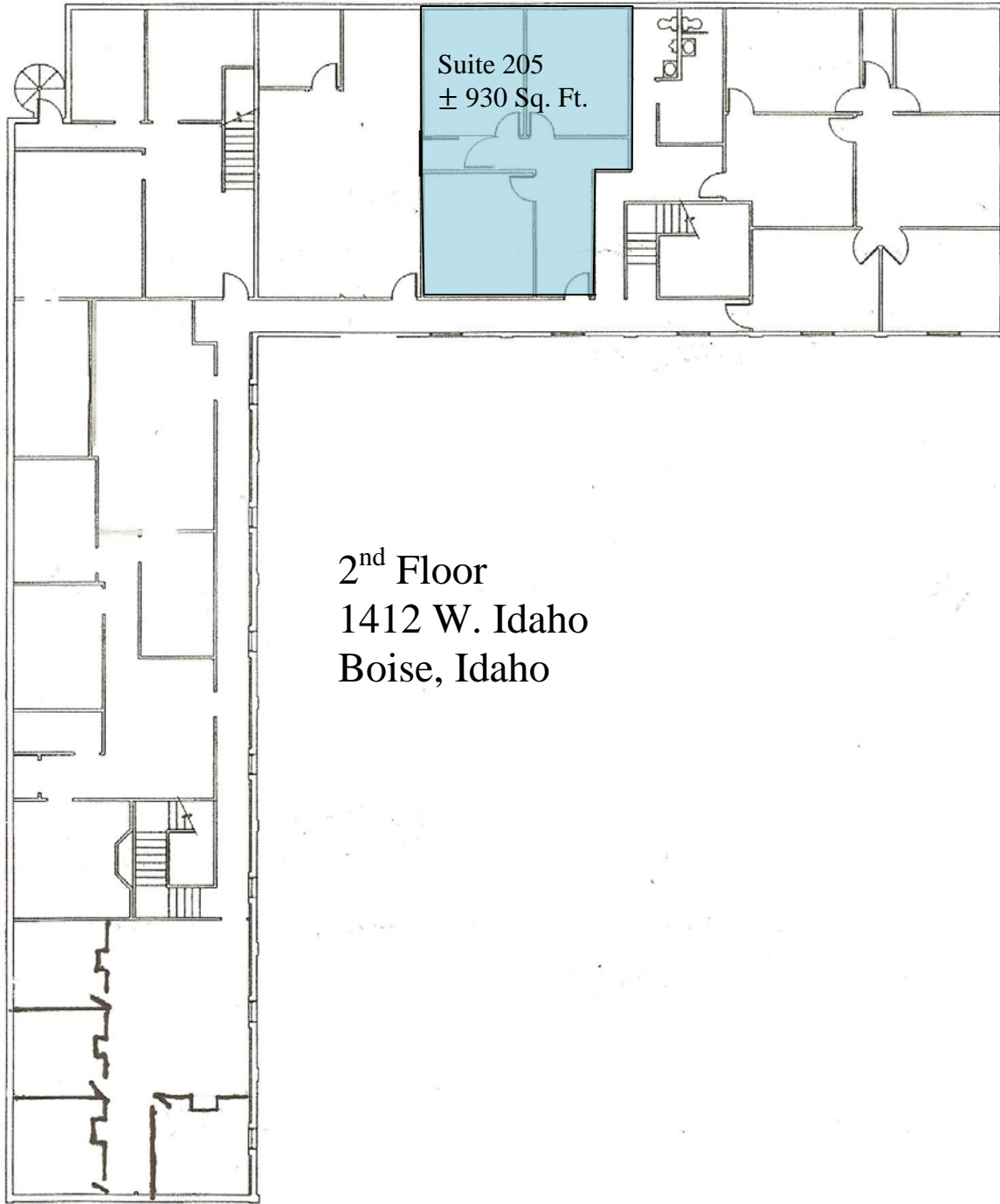
- Landlord pays all operating expenses for the building (Full Service w/Janitorial twice a week)
- Free Parking – 30 spaces on site, 10 spaces at 15th and Bannock + on street parking along Idaho & 15th.
- Free On Site Storage
- Great efficient layout
- Great Connector/I-84 access
- Great Signage Opportunities
- Leasing and management on site in Suite #110

AGENT: Lawrence A. Ross
Lawrence@michenerinvestments.com
208-861-9909

See floor plan on back →



*The above information, while not guaranteed, is from sources we believe to be reliable. This data is subject to price change corrections, errors, omissions, prior sale and/or withdrawal.



2nd Floor
1412 W. Idaho
Boise, Idaho

IDAHO STREET

15th STREET