

# VINEYARD COMMONS OFFICE OFFICE SUITE FOR LEASE

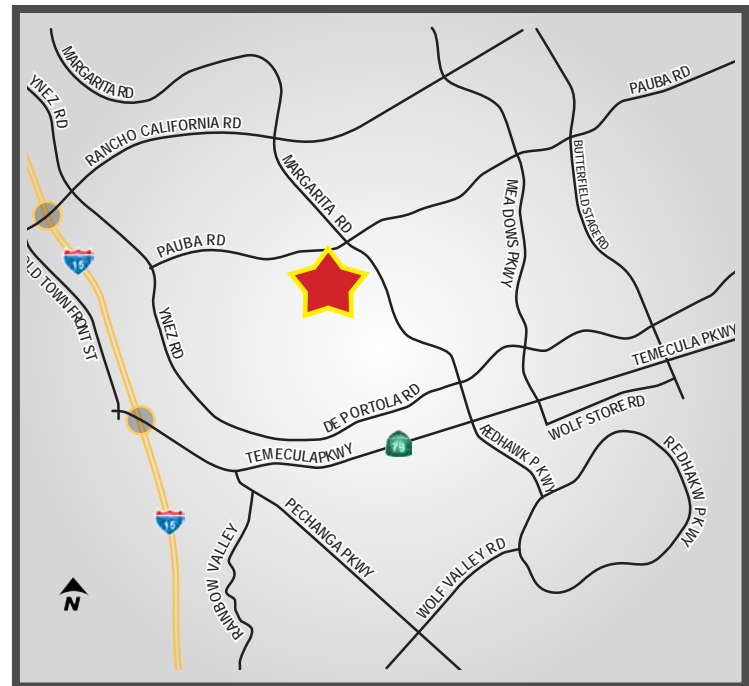
31205 - 31217 PAUBA ROAD - TEMECULA, CA



## PROPERTY HIGHLIGHTS:

- Suite 100: ±1,629 SF
- 2-Story, Elevator Served
- Located in Southeast Temecula
- 3rd Floor, Elevator Served Patio Deck
- Medical Uses Approved
- Immediate Occupancy

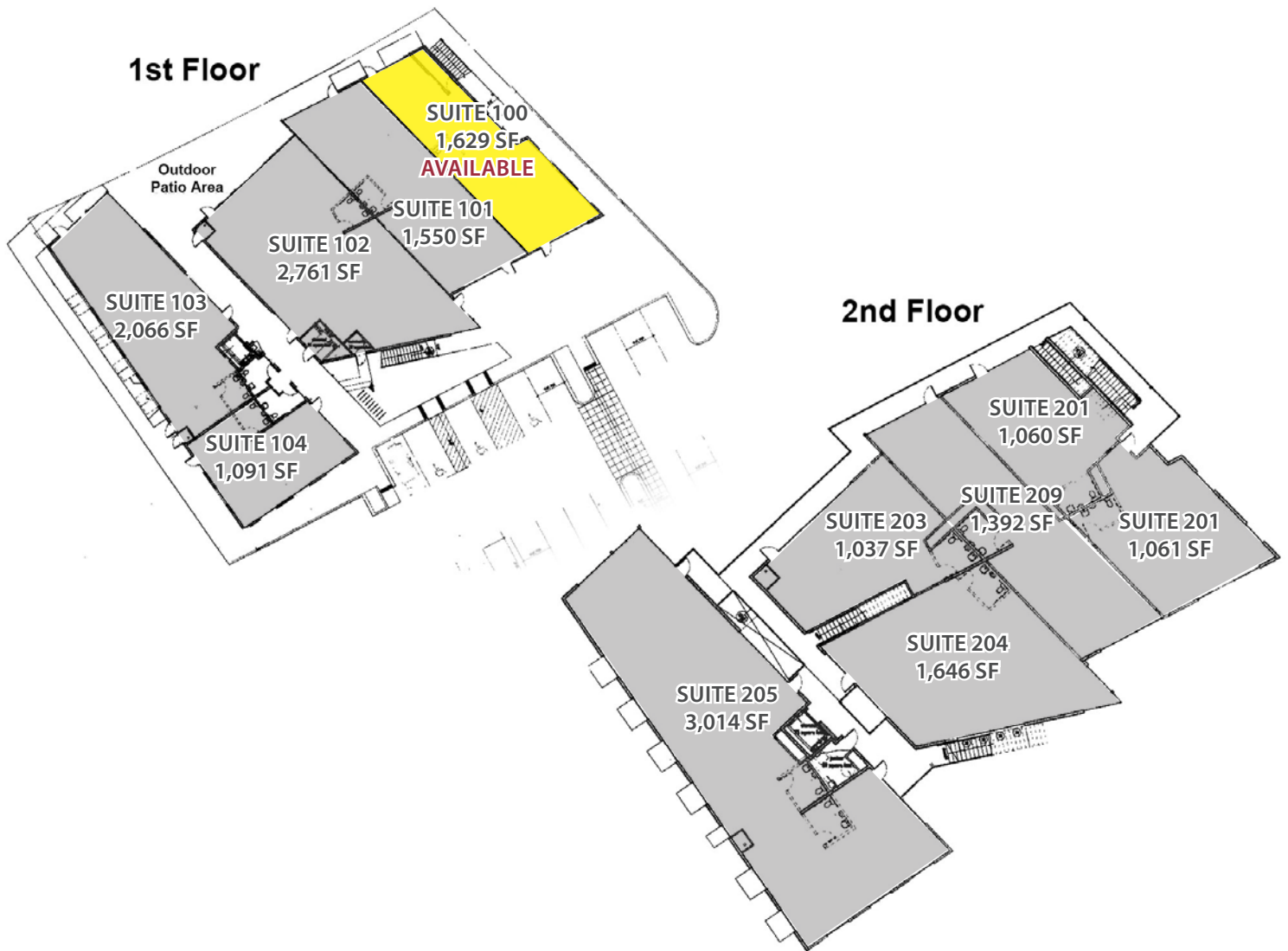
**LOW LEASE RATE: \$1.65 PSF/MG**



**JIM NADAL, CCIM, SIOR • 951.445.4520 • jnadal@leetemecula.com • DRE #01040679**

# VINEYARD COMMONS OFFICE OFFICE SUITE FOR LEASE

31205 - 31217 PAUBA ROAD - TEMECULA, CA



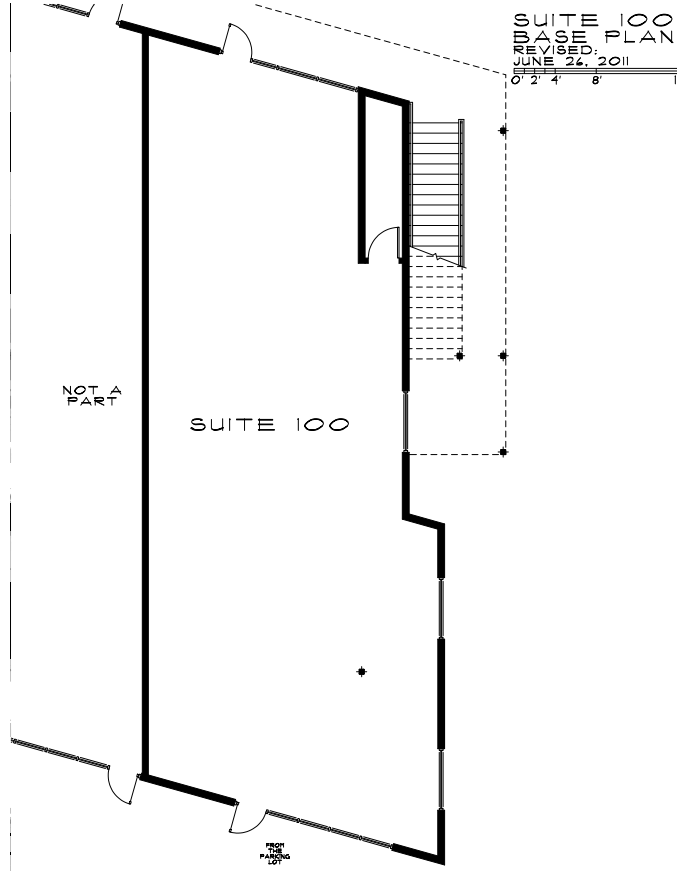
AVAILABLE FOR LEASE			
SUITE	SF(±)	RATE	DESCRIPTION
100	1,629	\$1.65 PSF MG	Large open office. Available Immediately. On lock box.
			Rev. 3/28/18

**JIM NADAL, CCIM, SIOR • 951.445.4520 • jnadal@leetemecula.com • DRE #01040679**

# VINEYARD COMMONS OFFICE OFFICE SUITE FOR LEASE

31205 - 31217 PAUBA ROAD - TEMECULA, CA

**SUITE 100: 1,629 SF**



**JIM NADAL, CCIM, SIOB • 951.445.4520 • jnadal@leetemecula.com • DRE #01040679**

# VINEYARD COMMONS OFFICE OFFICE SUITE FOR LEASE

31205 - 31217 PAUBA ROAD - TEMECULA, CA



**JIM NADAL, CCIM, SIOB • 951.445.4520 • jnadal@leetemecula.com • DRE #01040679**