

# Plaza By The Green **FOR LEASE**

24437

Russell Road  
Kent, WA 98032

**768 SF of Office Space  
Available Now**



Office Space on  
the Golf Course!



THE ANDOVER  
COMPANY, INC.

CORFAC INTERNATIONAL

ARNE SVENDSEN

(206) 336-5331

[asvensen@andoverco.com](mailto:asvensen@andoverco.com)



# PROPERTY HIGHLIGHTS

Golf Course

Property

RUSSELL RD

N

W MEEKER ST



WELL MAINTAINED  
CENTER



HIGH TRAFFIC  
COUNTS - 38,283 CARS  
DAILY



LOCATED ADJACENT  
TO RIVERBEND GOLF  
COMPLEX



STRONG LOCATION  
AT STRATEGIC  
INTERSECTION



HIGH VISIBILITY WITH  
GOOD INGRESS/  
EGRESS



GREAT SIGNAGE,  
ACCESS TO 1-5 AND  
HWY-167

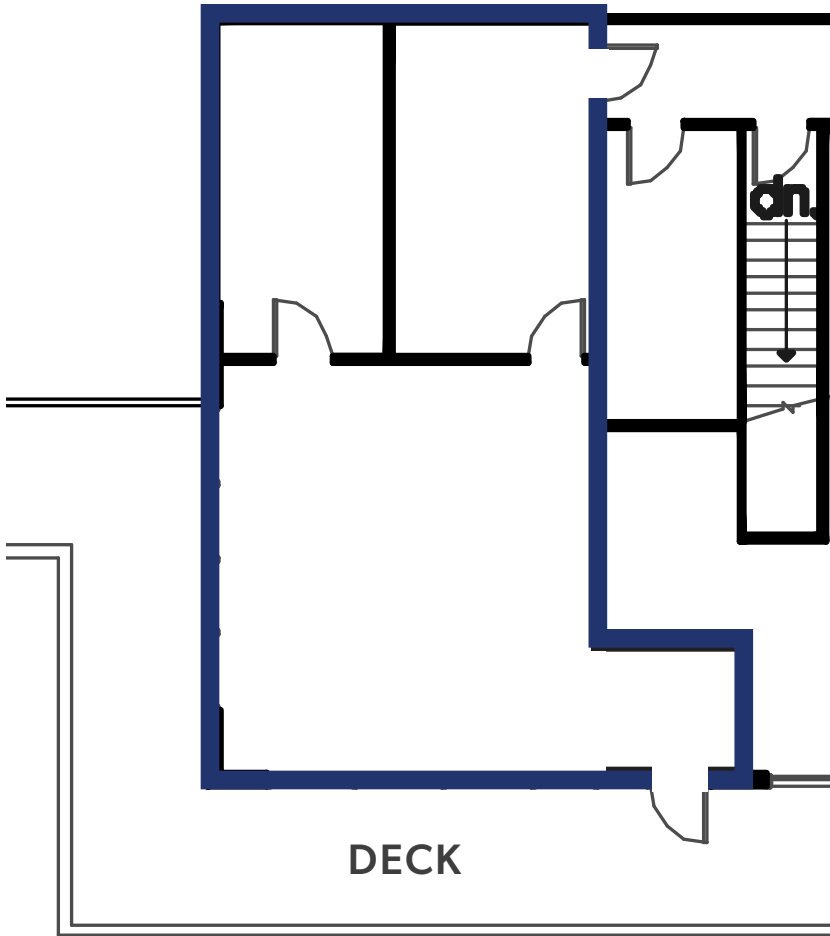


# Suite 210

Total SF: **768 SF**

Available: **Now**

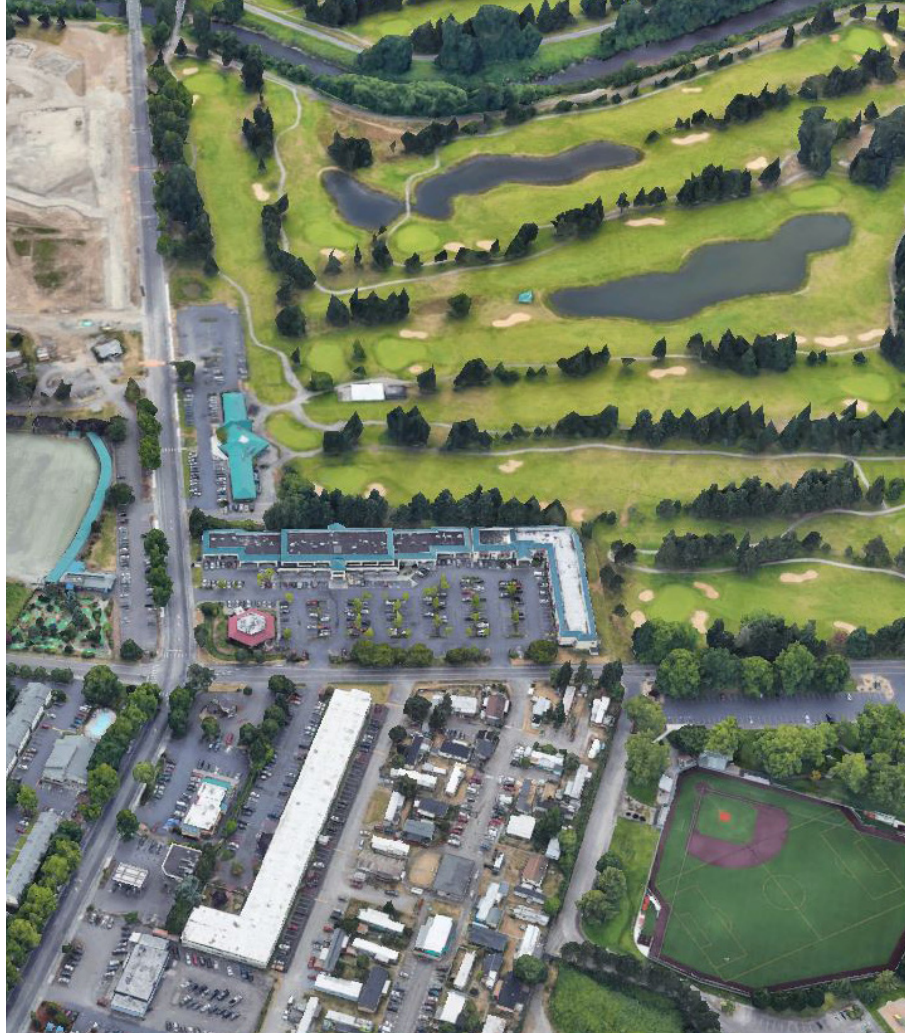
Rate: **\$24/SF Full Service including Janitorial**





24437

Russell Road  
Kent, WA



24437 Russell Road, Kent, WA | The Andover Company, Inc.

The information contained herein has been obtained from reliable sources, but is not guaranteed. A prospective buyer/tenant should verify each item relating to this property and all information contained herein.