

FOR LEASE

15848 International Boulevard
Tukwila, WA 98188



LEWIS & CLARK RETAIL SHOPPING CENTER

Steve Erickson | Nick Barber

First Western Properties, Inc. | 425.822.5522 | fwp-inc.com
11621 97th Lane NE, Kirkland, Washington 98034

15848 INTERNATIONAL BLVD:



1,659 SF - 5,654 SF \$12-\$14 PSF PLUS NNN

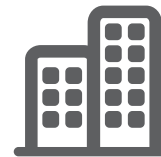
- Directly Across from the SeaTac Rental Car Facility on Highway 99
- Close Proximity to the Tukwila Link Light Rail Station
- Space Includes Grade Level Rollup Door



Population



Average HH Income

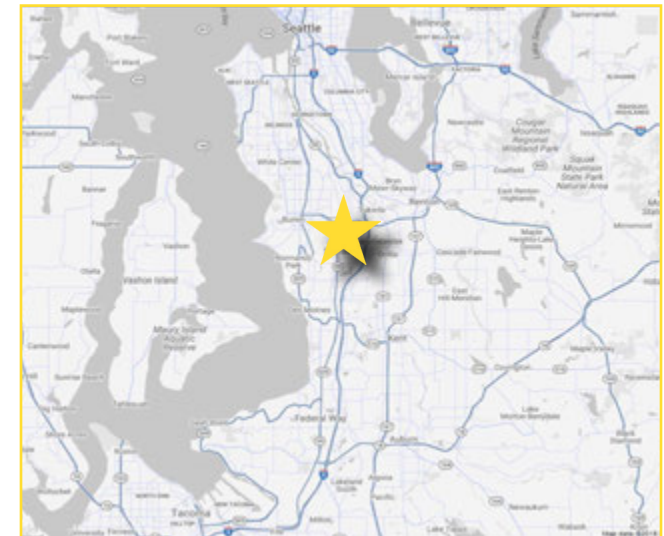
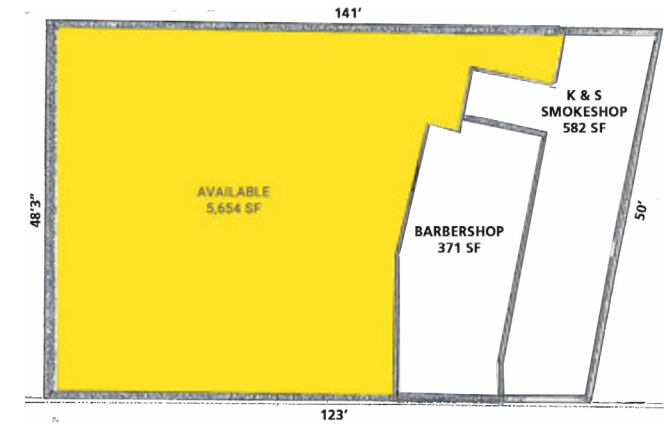


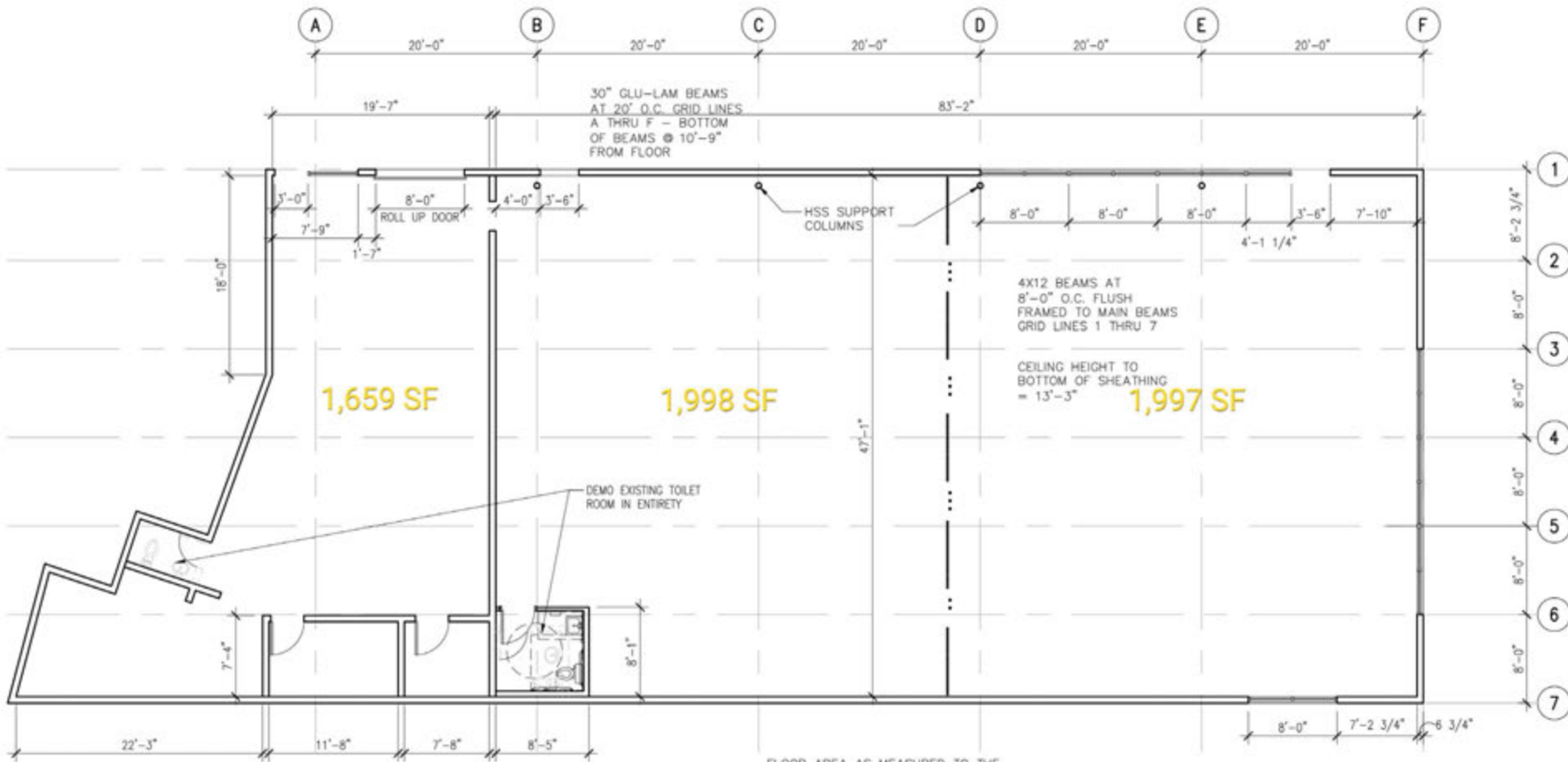
Daytime Population

Regis - 2019

	Population	Average HH Income	Daytime Population
Mile 1	14,526	\$79,926	4,114
Mile 3	90,406	\$82,173	71,478
Mile 5	240,031	\$88,572	170,803

FLOOR PLAN





FLOOR AREA AS MEASURED TO THE INTERIOR FACE OF EXTERIOR WALLS & ADJOINING TENANT WALLS = 5,186 SF OR FLOOR AREA AS MEASURED TO EXTERIOR FACE OF EXTERIOR WALLS & TO CENTER OF ADJOINING TENANT WALLS = 5,367 SF



Located Across from
SeaTac Airport



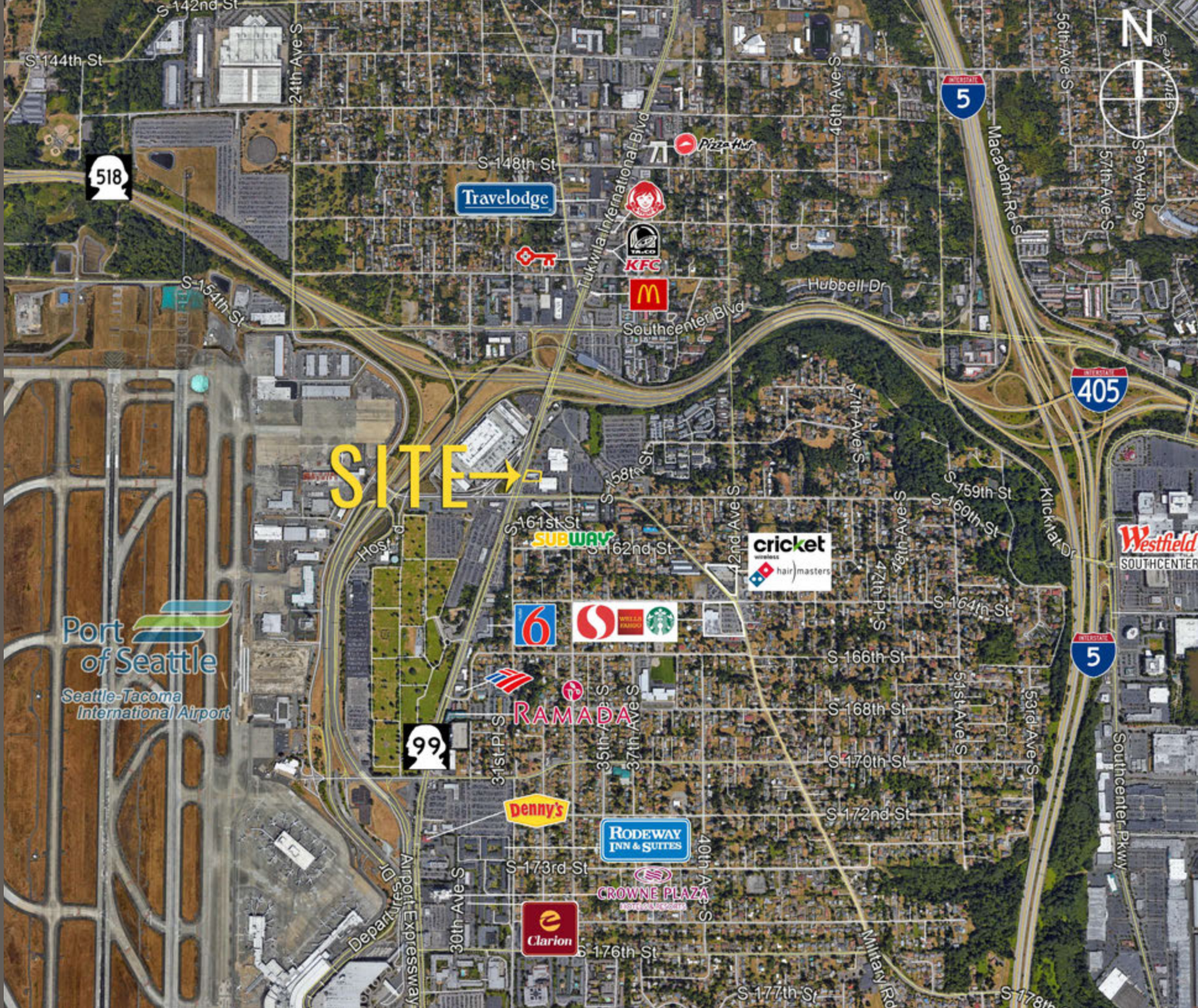
Area Services 47M
Visitors Annually



11,000 ADT
S 160th Street



35,000 ADT
Tukwila International Blvd



SITE →

Port of Seattle
Seattle-Tacoma International Airport

KIRKLAND | TACOMA | PORTLAND | SEATTLE



RETAIL FOCUSED. RESULTS DRIVEN.

STEVE ERICKSON

425.822.5522
serickson@fwp-inc.com

NICK BARBER

425.250.3271
nbarber@fwp-inc.com



First Western Properties, Inc. | 425.822.5522
11621 97th Lane NE Kirkland, WA 98034 | fwp-inc.com

© First Western Properties, Inc. DISCLAIMER: The above information has been secured from sources believed to be reliable, however, no representations are made to its accuracy. Prospective tenants or buyers should consult their professional advisors and conduct their own independent investigation. Properties are subject to change in price and/or availability without notice.