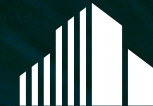


CLASS A OFFICE SUBLEASE

# ISLANDIA PAVILLION

1377 Motor Parkway

24,843 SF Available- 4th Floor



**CUSHMAN &  
WAKEFIELD**

# PROPERTY HIGHLIGHTS

- Strategically located just off the LIE
- Newly renovated Cafe
- Conferencing Facility
- Fitness Center with Trainer on Premises
- 24-Hour Key Card Access
- Sublease Price Upon Request

# SPACE HIGHLIGHTS

- Sublease Available Through 2030 (Term Negotiable)
- Excellent Window Line
- Newly Built Out Offices
- Furniture Available
- Executive C-Suite 4,519 SF
- General Office 20,324 SF



# EXECUTIVE SUITE HIGHLIGHTS

- 4,519 SF
- 5- Executive Offices
- 1- Conference Room
- 1- Kitchen/ Break Room
- 1- Lounge
- 1- Private Entrance



# EXECUTIVE OFFICE



# EXECUTIVE LOUNGE



# GENERAL OFFICE HIGHLIGHTS

- 20,324 SF
- 24- Private Offices (19 on Window Line)
- 24- Cubes in Bullpen Area
- 3- Conference Rooms
- 2- Recreation Areas
- 2- Private Pods
- 1- Break Room



# RECEPTION

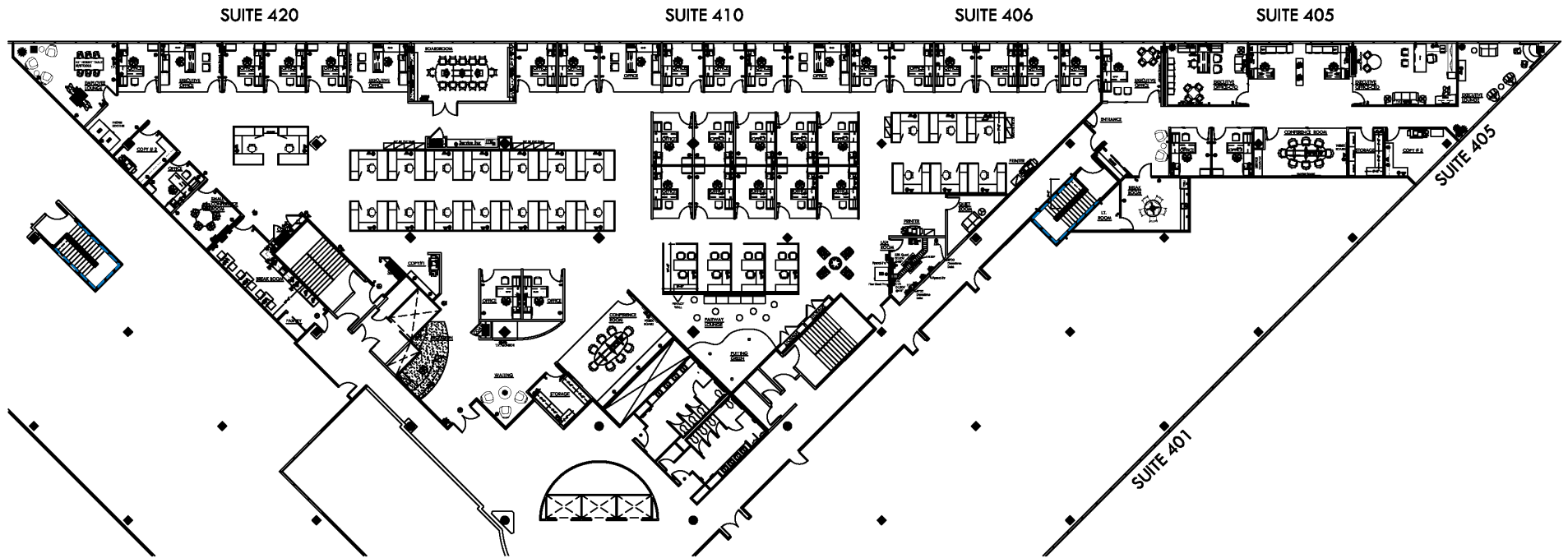




# RECREATIONAL SPACE



# FLOORPLAN



N

24,843 SF

# MAP



**ELIZABETH HOLMES**

(631) 546-5885

ELIZABETH.D.HOLMES@CUSHWAKE.COM

**STEVEN TAYLOR**

(404) 682 3383

STEVEN.TAYLOR@CUSHWAKE.COM

THE DEPICTION IN THE INCLUDED PHOTOGRAPH OF ANY PERSON, ENTITY, SIGN, LOGO OR PROPERTY, OTHER THAN CUSHMAN & WAKEFIELD'S (C&W) CLIENT AND THE PROPERTY OFFERED BY C&W, IS INCIDENTAL ONLY, AND IS NOT INTENDED TO CONNOTE ANY AFFILIATION, CONNECTION, ASSOCIATION, SPONSORSHIP OR APPROVAL BY OR BETWEEN THAT WHICH IS INCIDENTALY DEPICTED AND C&W OR ITS CLIENT. THIS LISTING SHALL NOT BE DEEMED AN OFFER TO LEASE, SUBLEASE OR SELL SUCH PROPERTY; AND, IN THE EVENT OF ANY TRANSACTION FOR SUCH PROPERTY, NO COMMISSION SHALL BE EARNED BY OR PAYABLE TO ANY COOPERATING BROKER EXCEPT IF OTHERWISE PROVIDED PURSUANT TO THE EXPRESS TERMS, RATES AND CONDITIONS OF C&W'S AGREEMENT WITH ITS PRINCIPAL, IF, AS AND WHEN SUCH COMMISSION (IF ANY) IS ACTUALLY RECEIVED FROM SUCH PRINCIPAL. (A COPY OF THE RATES AND CONDITIONS REFERRED TO ABOVE WITH RESPECT TO THIS PROPERTY IS AVAILABLE UPON REQUEST.)



**CUSHMAN &  
WAKEFIELD**