

ROOM FINISH SCHEDULE						
NO.	RM. NAME	FLOOR	BASE	WALLS	CEILING	HT. REMARKS
		NONE				
		CARPET				
		ACCENT CARPET				
		VINYL COMPOSITION TILE				
		CERAMIC TILE				
		VITREOUS TILE				
		HARD WOOD				
		NONE				
		VINYL				
		CERAMIC TILE				
		NONE				
		GYPSON BOARD, PAINTED				
		CERAMIC TILE				
		NONE				
		EXISTING CONSTRUCTION, PAINTED				
		GYPSON BOARD, PAINTED				
		ACOUSTIC TILE, 2x4				
		ACOUSTIC TILE, 2x2				
		LINEAR SAT				

1 FLOOR														2 FLOOR													
0	LOBBY																									24'-8";	—
21	RECEPTION																									24'-8";	—
12	WAITING																									9'-0"	SEE PLAN FOR LOCATION OF CEILING HEIGHTS
13	CORRIDOR																									8'-0"	SEE PLAN FOR LOCATION OF CEILING HEIGHTS
4	STORAGE 1																									VARIES	—
5	STORAGE 2																									9'-0"	—
6	CONFERENCE / MEETING																									8'-0"	SEE PLAN FOR LOCATION OF CEILING HEIGHTS
17	ARCHIVE																									9'-0"	—
8	HARDWARE																									9'-0"	—
19	REPRODUCTION																									9'-0"	—
0	WOMEN																									9'-0"	—
11	MEN																									9'-0"	—
12	CANTEEN																									8'-0"	—
13	JANITOR																									8'-0"	—
-120	MANAGER																									9'-0"	—
-123	CONFERENCE																									9'-0"	—
14	ENGINEERING																									EXISTING	—
25	ELECTRICAL EQUIPMENT																									EXISTING	—
16	STAIR																									24'-8";	—

2ND FLOOR																	
0	HALL 1		●	●		●		●		●		●		●	10'-0"	—	
01	WAITING		●	●		●		●		●		●		●	10'-0"	—	
12	HALL 2		●	●		●		●		●		●		●	8'-0"	—	
13	HALL 3		●	●		●		●		●		●		●	8'-0"	—	
14	PRESENTATION		●	●		●		●		●		●		●	8'-0"	—	
15	ADMINISTRATION 1		●	●		●		●		●		●		●	10'-0"	—	
16	EXECUTIVE V.P.		●	●		●		●		●		●		●	10'-0"	—	
17	EXECUTIVE ASSISTANTS		●	●		●		●		●		●		●	9'-0"	—	
18	PRESIDENT / C.E.O.		●	●		●		●		●		●		●	10'-0"	—	
19	UNISEX 1				●			●		●				●	9'-0"	—	
20	TOILET 1				●			●		●				●	9'-0"	—	
21	UNISEX2							●		●				●	9'-0"	—	
22	TOILET 2				●			●		●				●	9'-0"	—	
23	CONFERENCE 1		●					●		●				●	9'-0"	—	
24	COPY				●			●		●				●	9'-0"	—	
25	CANTEEN 1							●		●				●	9'-0"	—	
26	JANITOR				●			●		●				●	8'-0"	—	
27	CANTEEN 2			●				●		●				●	8'-0"	—	
28	MEN				●			●		●				●	9'-0"	—	
29	WOMEN				●			●		●				●	9'-0"	—	
30	HALL 4		●					●		●				●	9'-0"	—	
31	ADMINISTRATION 2		●					●		●				●	9'-0"	—	
32	SALES							●		●				●	9'-0"	—	
33	VIDEO		●					●		●				●	9'-0"	—	
34	CONFERENCE 2		●					●		●				●	9'-0"	—	
35-36	OFFICES		●					●		●				●	9'-0"	—	
37	VACANT	●						●		●				●	EXISTING	—	

## ALTERNATES

INCREASE ALL DOORS TO 8'-0" HIGH, (1 3/4" THICK) WITH STAINLESS STEEL HARDWARE

INCREASE ALL INTERIOR WINDOWS TO 8'-0" HIGH

PROVIDE ALTERNATE DOOR CASING AT DOORS 2, 4, 5, 9, 12 AND 13. (REFER TO SHEET A-4 FOR DETAIL)

ADD NEON LIGHTING COVE AT ROOMS 103, 108, 124, 200 AND 201 WITH WHITE AND BLUE. (SEE SHEETS A-1, A-2 FOR LOCATIONS) SWITCH AT CONFERENCE ROOM FOR WHITE ONLY)

PROVIDE ETCHED GLASS FOR PRIVACY AT ALL WINDOWS. (REFER TO SHEET A-4 FOR DETAIL)

PROVIDE FULLY RECESSED SPRINKLER HEADS WITH WHITE CAP COVER

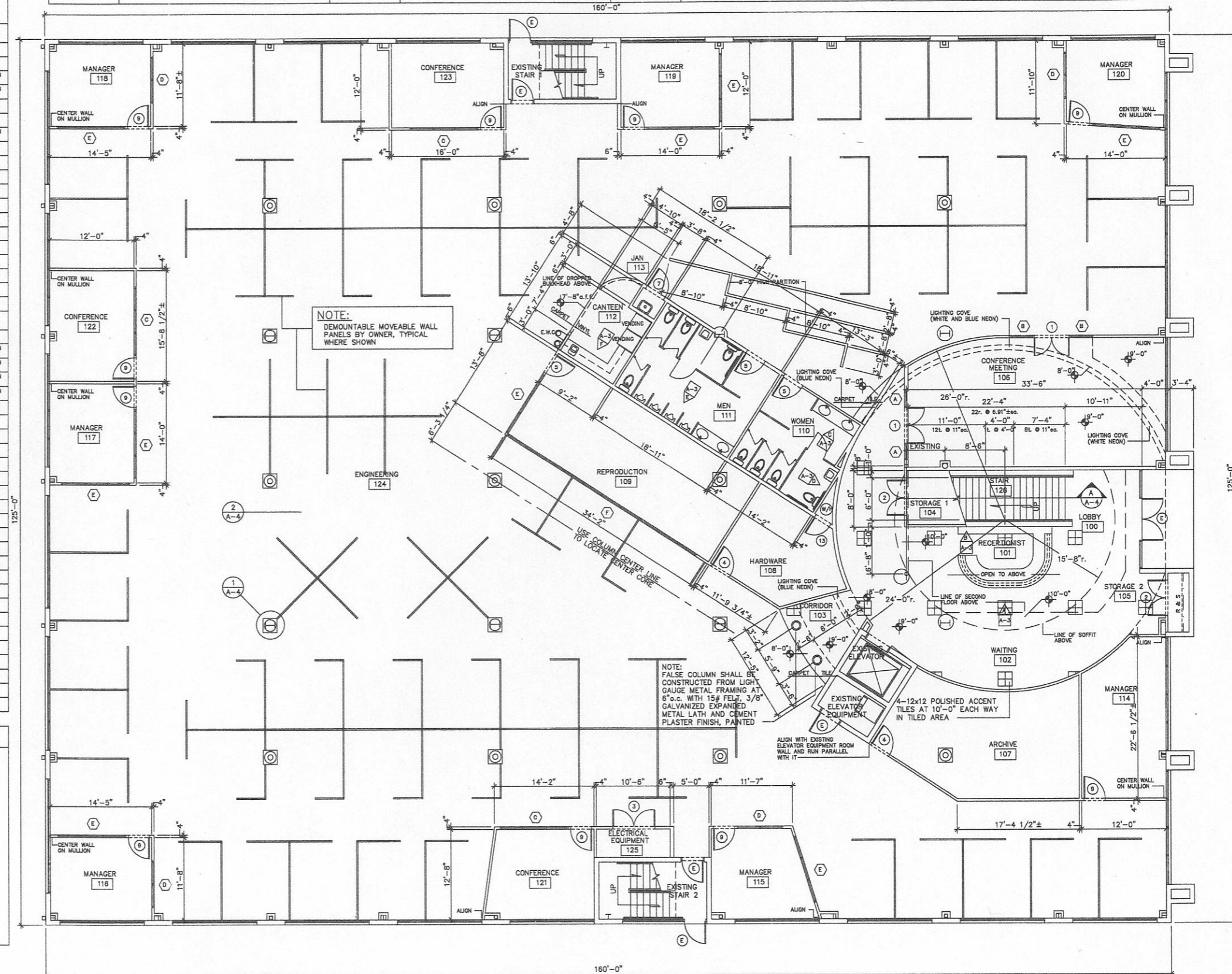
PROVIDE ZOLOTONE FLECK PAINT TEXTURED SPRAY WALL COATING AT ALL WALLS

PROVIDE RADIUSED, (15% COVERAGE) ACCENT CARPET. (SEE FINISH SCHEDULE FOR LOCATIONS)

Y CERTIFY THAT THESE CONSTRUCTION DRAWINGS ARE IN  
ANCE WITH THE 1994 EDITION OF THE STANDARD BUILDING  
ECTION 1606, FOR CONSTRUCTION IN 110 M.P.H. WIND ZONE.

BEST OF THIS ARCHITECT'S AND/OR ENGINEER'S KNOWLEDGE  
ANS AND SPECIFICATIONS COMPLY WITH THE APPLICABLE  
BUILDING CODES AND APPLICABLE MINIMUM FIRE SAFETY  
RDS AS DETERMINED IN ACCORDANCE WITH CHAPTERS 553  
3. LAWS OF FLORIDA

INDEX OF DRAWINGS							
SHEET NO.	DESCRIPTION	SHEET NO.	DESCRIPTION	SHEET NO.	DESCRIPTION	SHEET NO.	DESCRIPTION
A-1	INDEX OF DRAWINGS FIRST FLOOR PLAN FINISH SCHEDULE FINISH DESIGNATIONS	E-1	FIRST FLOOR ELECTRICAL POWER PLAN ELECTRICAL LEGEND BRANCH CIRCUIT WIRING DIAGRAM FIRE ALARM LEGEND	M-1	FIRST FLOOR H.V.A.C. PLAN H.V.A.C. EQUIPMENT SCHEDULE MECHANICAL LEGEND SEQUENCE OF OPERATION H.V.A.C. GENERAL NOTES FIRST FLOOR AIR BALANCE DETAILS	P-2	SECOND FLOOR PLUMBING PLAN GENERAL PLUMBING NOTES DETAILS PLUMBING RISER DIAGRAMS
A-2	SECOND FLOOR PLAN DOOR SCHEDULE WINDOW SCHEDULE	E-2	SECOND FLOOR ELECTRICAL POWER PLAN ELECTRICAL PANEL SCHEDULES ELECTRICAL LEGEND				
A-3	INTERIOR ELEVATIONS	E-3	FIRST FLOOR ELECTRICAL LIGHTING PLAN LIGHTING FIXTURE SCHEDULE ELECTRICAL LEGEND	M-2	SECOND FLOOR H.V.A.C. PLAN ROOF H.V.A.C. PLAN SECOND FLOOR AIR BALANCE DETAILS	LS-1	FIRST FLOOR LIFE SAFETY PLAN FIRE ALARM LEGEND FIRE SPRINKLER NOTES SPRINKLER RISER DIAGRAM TEST CONNECTION DIAGRAM DETAILS
A-4	DETAILS	E-4	SECOND FLOOR ELECTRICAL LIGHTING PLAN ELECTRICAL PANEL SCHEDULES ELECTRICAL NOTES	P-1	FIRST FLOOR PLUMBING PLAN PLUMBING FIXTURE SCHEDULE P.V.C. THRU CONCRETE DETAILS	LS-2	SECOND FLOOR LIFE SAFETY PLAN PLAN



1 FIRST FLOOR PLAN

SCALE: 1/8"=1'-0"

INTERIOR ONLY

A NEW OFFICE BUILDING FOR:

AIDLIN FACILITY — GEBO CORPORATION  
A NEW OFFICE BUILDING FOR:  
HENSON INDUSTRIAL PARK — MANATEE COUNTY, FLORIDA

INDUSTRIAL PARK - MANATEE COUNTY, FLORIDA  
PREPARED FOR: BILL HALFACRE INC.

License No. AA C000547

License No. AA 0000547

**GEORGE PALERMO**  
ARCHITECT, INC.

11444 FIRST STREET, SARASOTA, FLORIDA, 34236

ARCHITECT, INC.  
1444 FIRST STREET, SARASOTA, FLORIDA, 34236 941-365-7777 / FAX 941-954-4214

DATE  
6/2/98  
FILE  
97093

SHEET  
A —  
OF 4