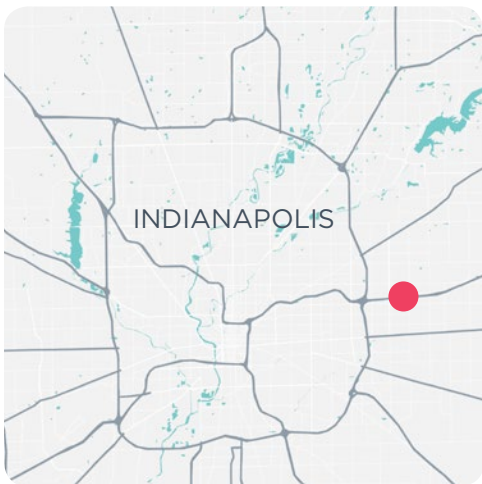




INTERSTATE 70 DEVELOPMENT SITE ON INDIANAPOLIS EASTSIDE



AVAILABLE ACRES

32.000 AC

SALE PRICE

\$1,600,000

A rare 32 acre development site near I-70 and Post Road is now offered for sale. The site is rectangular in shape and is currently zoned partly retail and partly office. Seller will consider rezoning for light industrial warehouse.

- + 1,700' frontage on I-70
- + Southeast quadrant I-70 and Post Road
- + Rectangular shape
- + 32 acres
- + Possible light industrial warehouse rezoning
- + 21st Street access

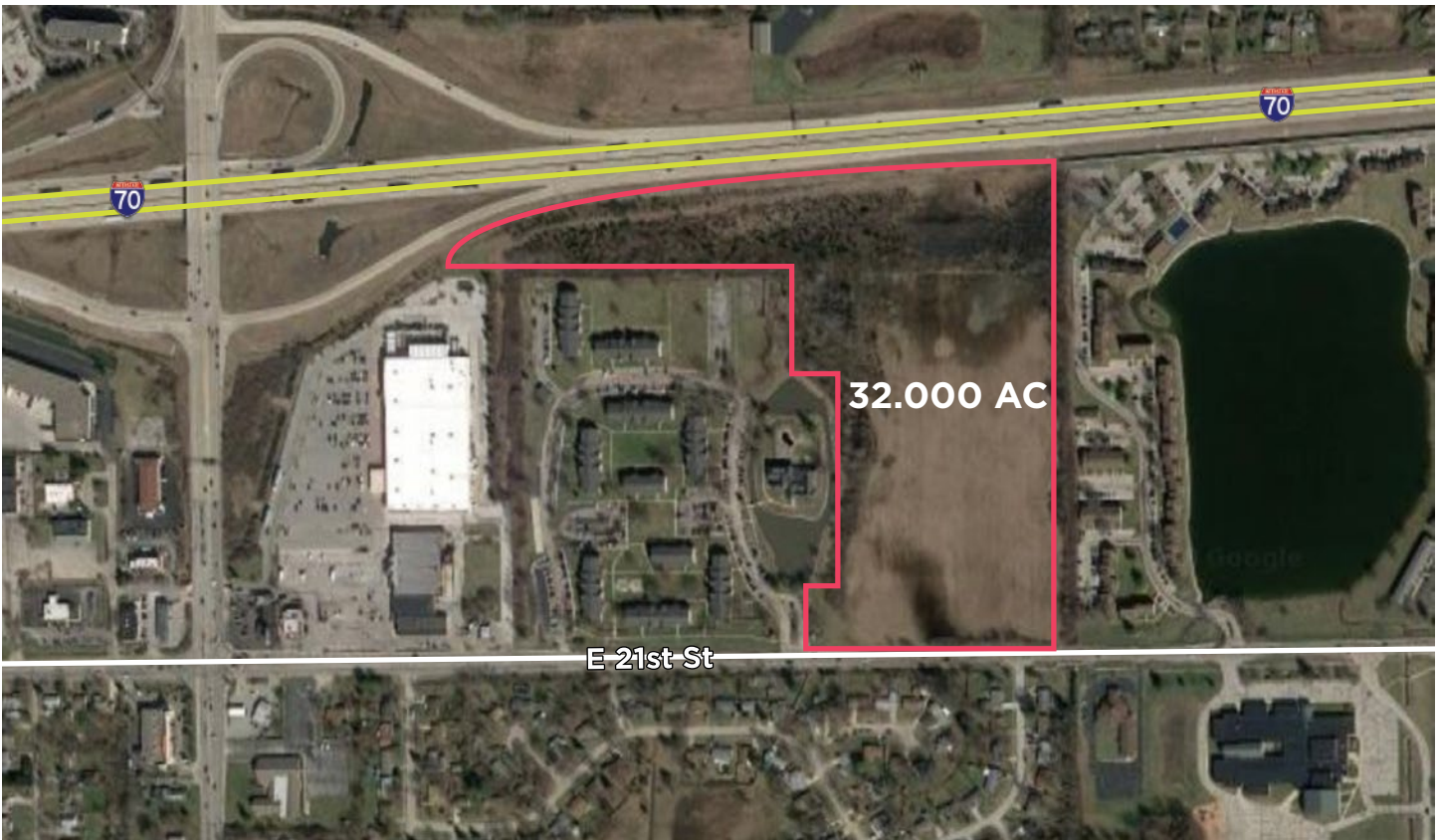
ROSS RELLER

Senior Vice President

☎ 317.663.6552

☎ 317.414.1101

ross.reller@rcre.com



DEMOGRAPHICS*

	1 MILE	3 MILES	5 MILES	10 MILES
Population	11,338	87,781	180,084	582,461
Households	4,574	34,342	72,956	244,115
Average HH Income	\$49,668	\$55,367	\$57,919	\$72,556
Median Age	32.9	33.0	34.8	35.4

*SitesUSA 2018 Estimated

ROSS RELLER

Senior Vice President

☎ 317.663.6552

☎ 317.414.1101

✉ ross.reller@rcre.com

RESOURCE

rcre.com

in #growIndiana

The information contained herein was obtained from sources we consider reliable. We cannot be responsible for errors, omissions, prior sale or lease, withdrawal from the market or change in price. Seller and broker make no representation as to the environmental condition of the property and recommend the lessee's/purchaser's independent investigation. Ver. 19.01.08-1123

9339 Priority Way West Drive
Suite 120
Indianapolis, IN 46240
317.663.6000