

# EAST COOPER PLAZA

900 Bowman Road Mount Pleasant, SC

*Up to 8,985 SF of Office Space For Lease*



Alex Irwin  
843.637.5013  
[airwin@wilsonkibler.com](mailto:airwin@wilsonkibler.com)

 **Newmark  
Wilson Kibler**

# EAST COOPER PLAZA

900 Bowman Road  
Mount Pleasant, SC

*Build-to-Suit Office Space For Lease*

## SPACE

- ± 8,985 SF of shell office space available
- Suite 205: 5,616 RSF
- Suite 300: 2,184 RSF
- Suite 305: 1,185 RSF
- Suite 205 & 306: 7,800 RSF

\*Suites 205 & 306 can be combined with a stairwell

## FEATURES

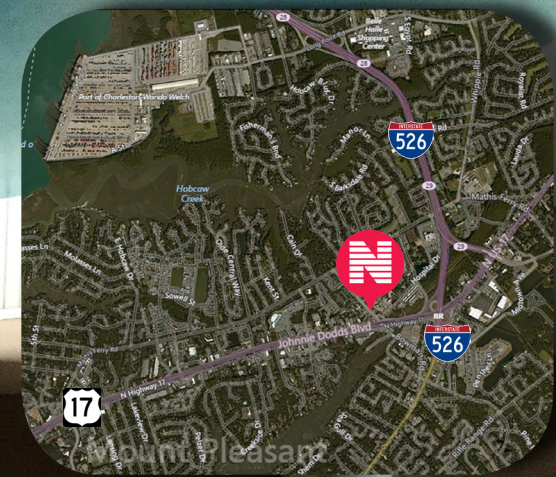
- Cold-shell - suites can be built out to tenant specifications
- Opportunity for a Class A finish
- Could have exposed ceiling, open floor plan, or a more classic finish
- Tenant improvement allowance negotiable

## AMENITIES

- Surrounded by first-rate dining and shopping in Mount Pleasant
- Ample on-site Parking

## LOCATION

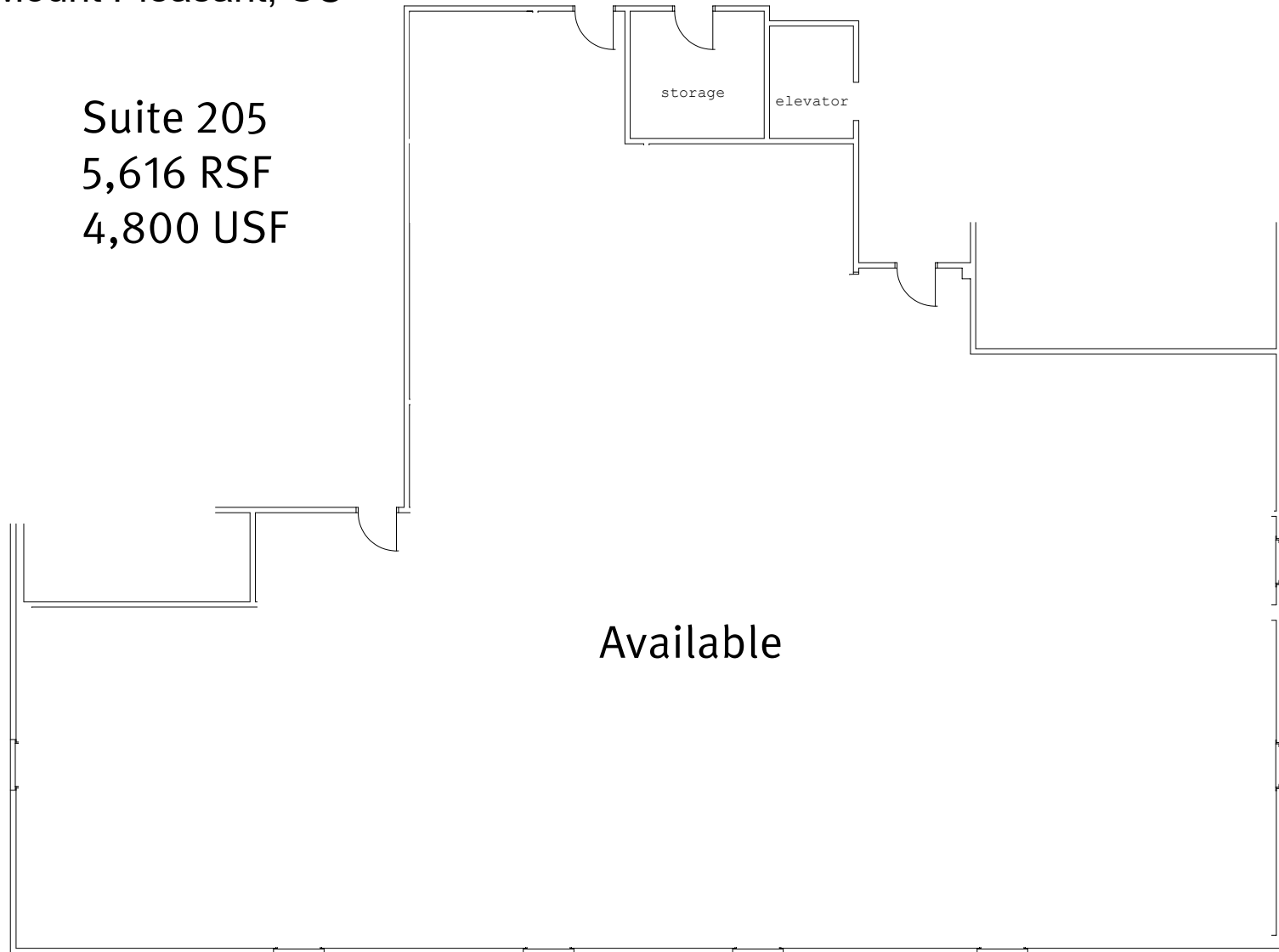
- In the heart of Mount Pleasant
- Located in East Cooper Plaza
- Easy access to and from I-526 and US 17



# EAST COOPER PLAZA

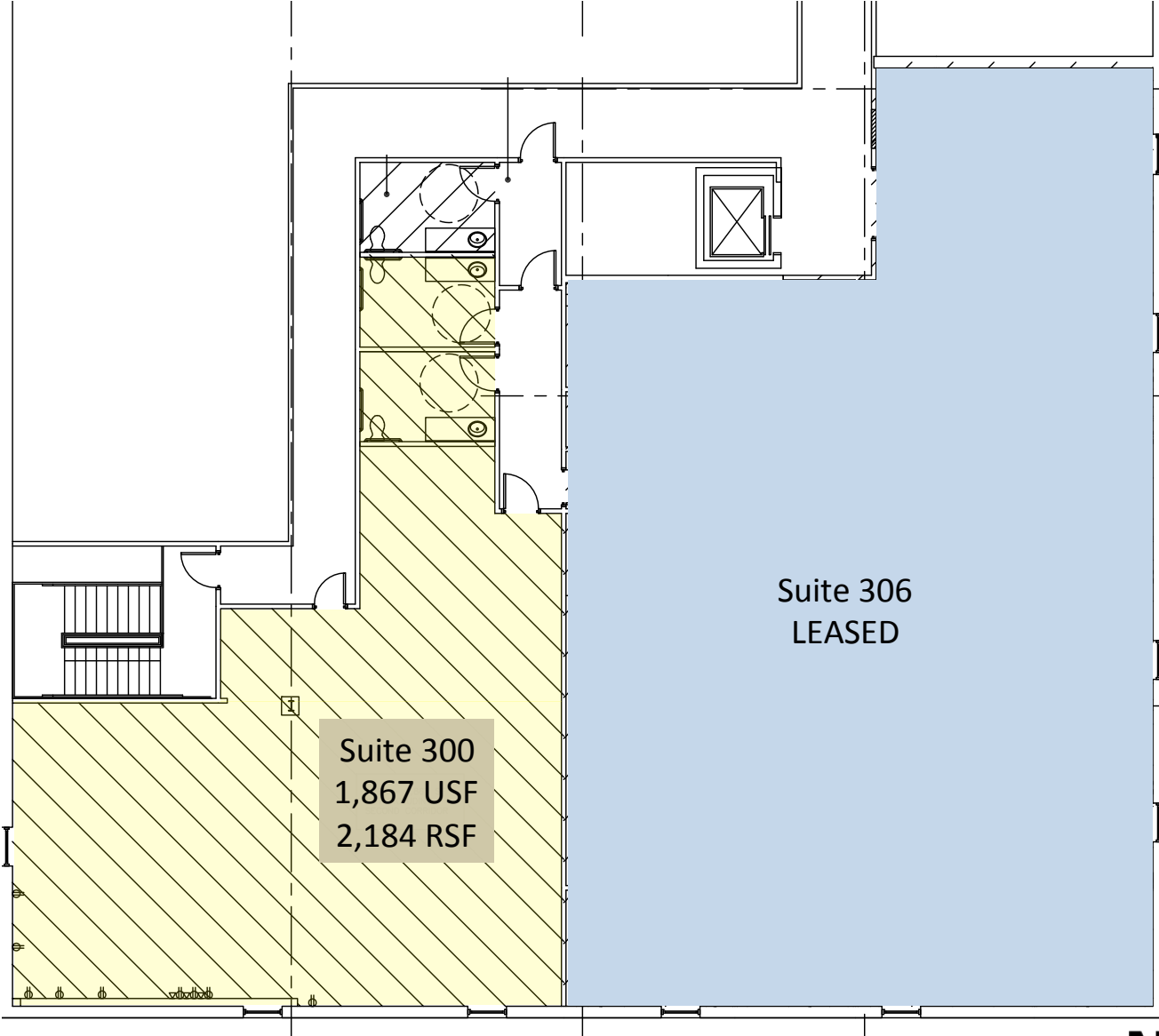
900 Bowman Road  
Mount Pleasant, SC

Suite 205  
5,616 RSF  
4,800 USF



# EAST COOPER PLAZA

900 Bowman Road  
Mount Pleasant, SC



Suite 300  
1,867 USF  
2,184 RSF

Suite 306  
LEASED

# EAST COOPER PLAZA

900 Bowman Road  
Mount Pleasant, SC

Suite 305  
Total:  
1,013 USF  
1,185 RSF

