

1002 WISCONSIN AVENUE, N.W. (WATERFRONT CENTER)

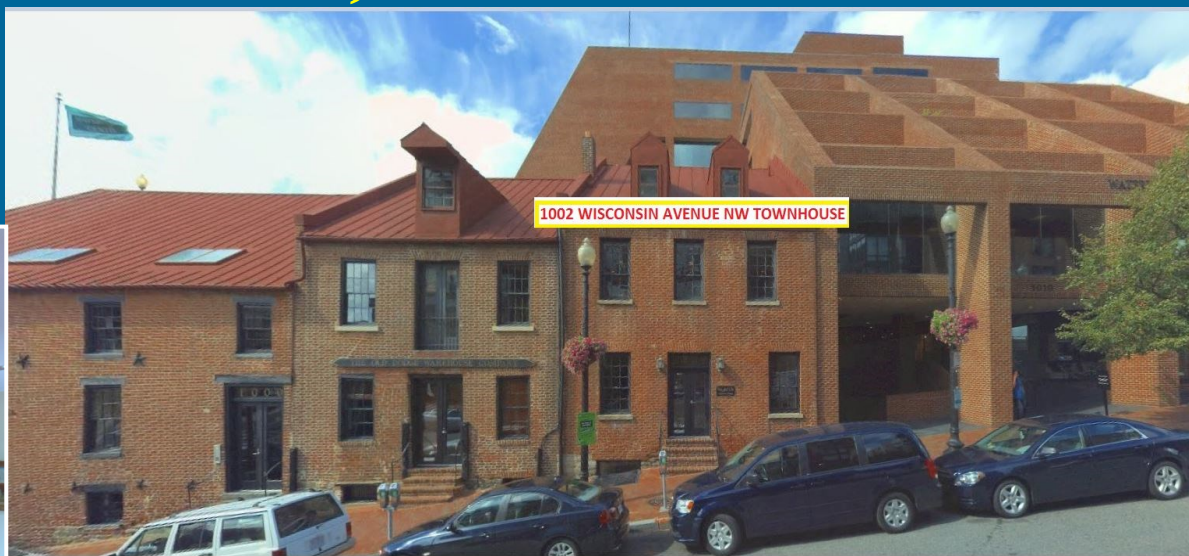
RARE 4-LEVEL TOWNHOUSE AVAILABLE FOR LEASE

- RENOVATED HISTORIC TOWNHOUSE WITH SUBDIVISION OPTIONS
- BEAUTIFUL EXPOSED BRICK, HARDWOOD FLOORS AND WOOD BEAMS
- PROMINENT WISCONSIN AVENUE FRONTAGE
- PRIVATE RESTROOMS (UPPER LEVEL RESTROOM INCLUDES SHOWER)
- GORGEOUS FIREPLACES (NON-FUNCTIONAL)
- KITCHENETTE
- PRIVATE ENTRANCE
- FLEXIBLE LEASE TERMS AND RATES

- LOWER LEVEL: 900 RSF
- 1ST FLOOR: 900 RSF
- 2ND FLOOR: 900 RSF
- 3RD FLOOR: 900 RSF

1,800 RSF - 3,600 RSF

RB properties, inc.



TED VOGEL

MOLLYE SCHNEEBERG

(202) 342-1054

MSCHNEEBERG@RBPROPERTIESINC.COM

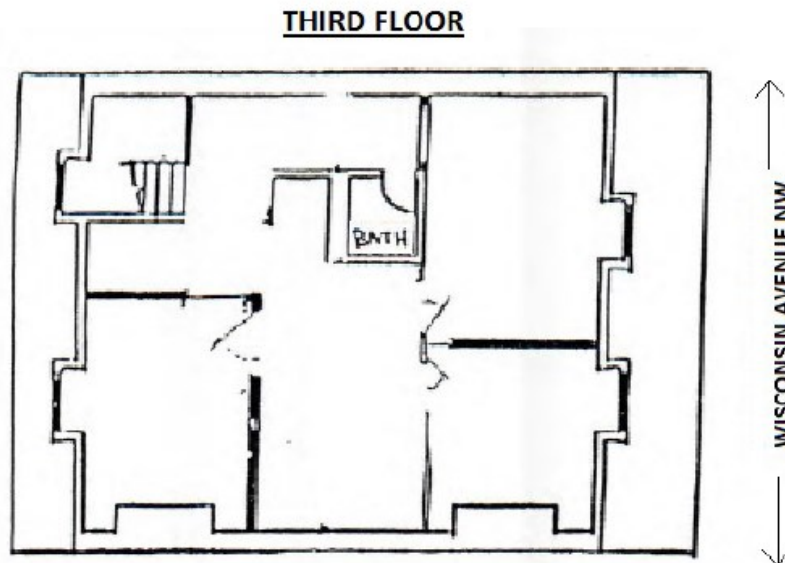
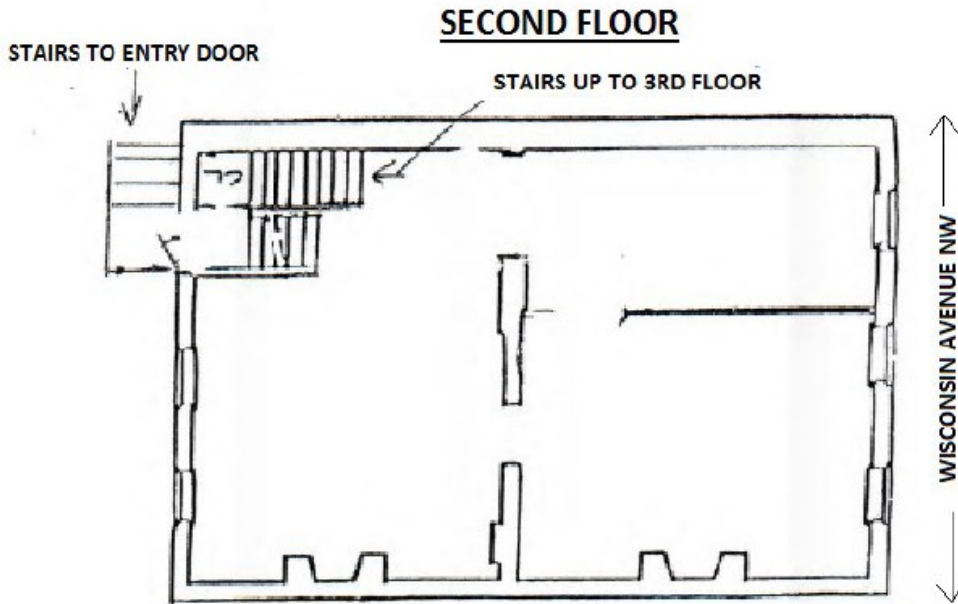
WWW.RBPROPERTIESINC.COM

WWW.RBPROPERTIESINC.COM

WATERFRONT CENTER (1000-1010 WISCONSIN AVENUE NW)

1002 WISCONSIN AVENUE NW UPPER TOWNHOUSE

1,800 SF



NOT TO SCALE. IMAGE AND DIMENSIONS ARE APPROXIMATE AND SUBJECT TO VERIFICATION.

06/21/19