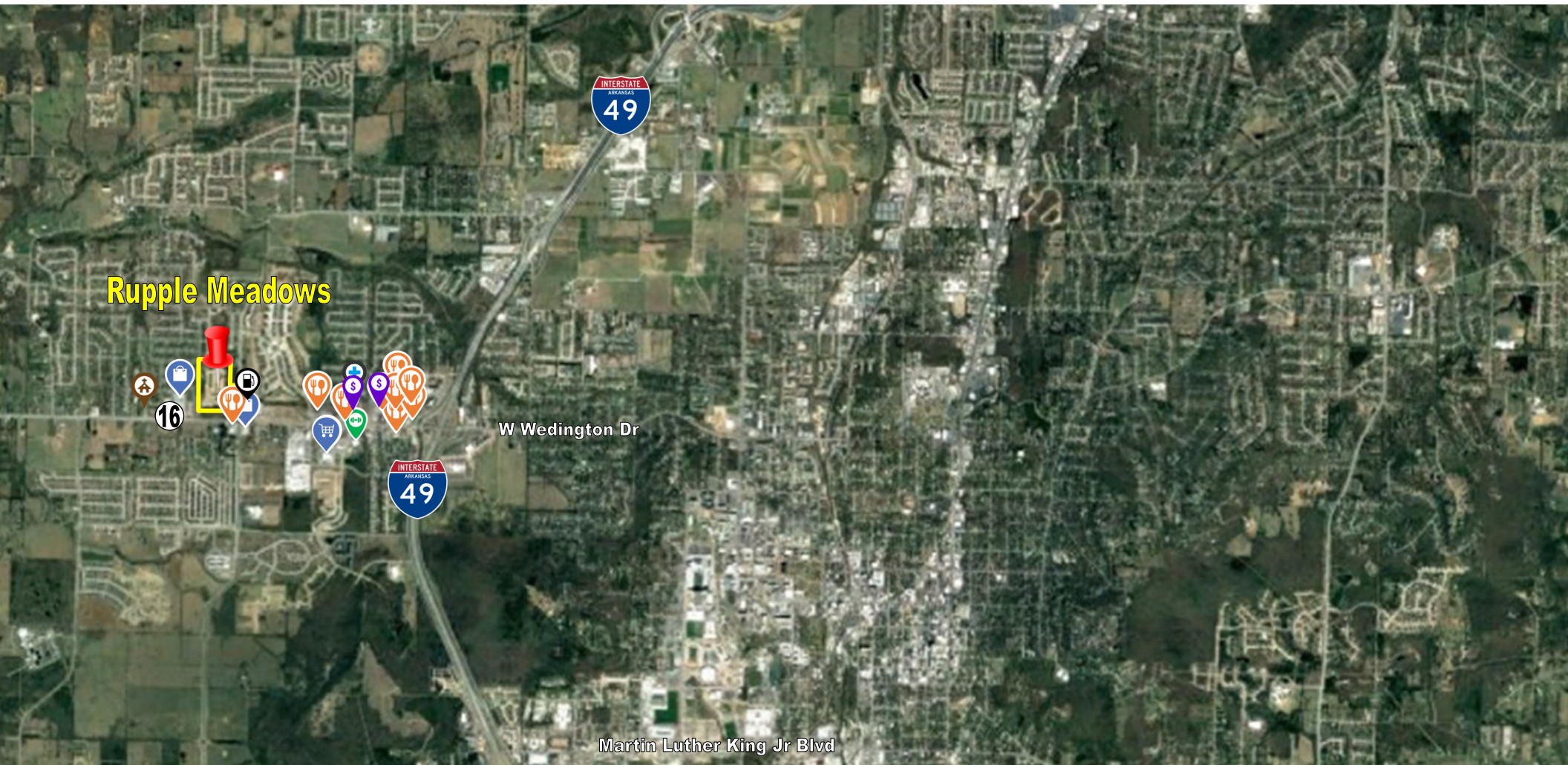


Ripple Meadows

Fayetteville, Arkansas



Purchase Price

\$7,485,660

Projected Yearly Income

\$780,600

10.43% CAP RATE



Bob Cooper, Jr.

Executive Broker

479.478.6161

bob@rhghan.com



CONFIDENTIALITY & DISCLAIMER STATEMENT

The information contained in the following Marketing Brochure is proprietary and strictly confidential. It is intended to be reviewed only by the party receiving it from Ghan & Cooper Commercial Properties. This Marketing Brochure has been prepared to provide summary, unverified information contained herein is not a substitute for a thorough due diligence investigation. The information contained in this Marketing Brochure has been obtained from sources we believe to be reliable; however, Ghan & Cooper Commercial Properties has not verified, and will not verify, any of the information contained herein, nor has Ghan & Cooper Commercial Properties conducted any investigation regarding these matters and makes no warranty or representation whatsoever regarding the accuracy or completeness of the information provided. All potential buyers/tenants must take appropriate measures to verify all of the information set forth herein.

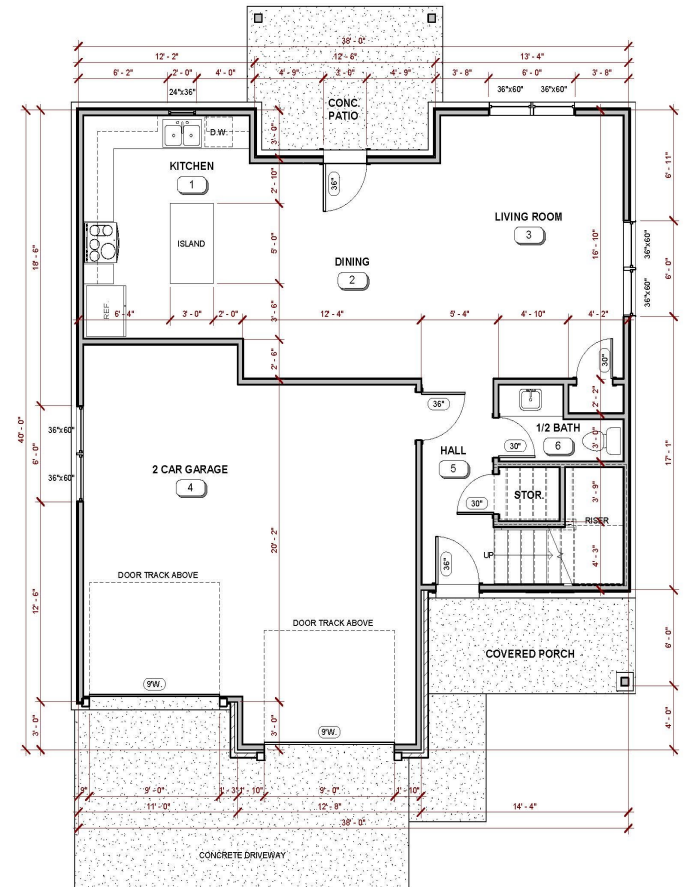
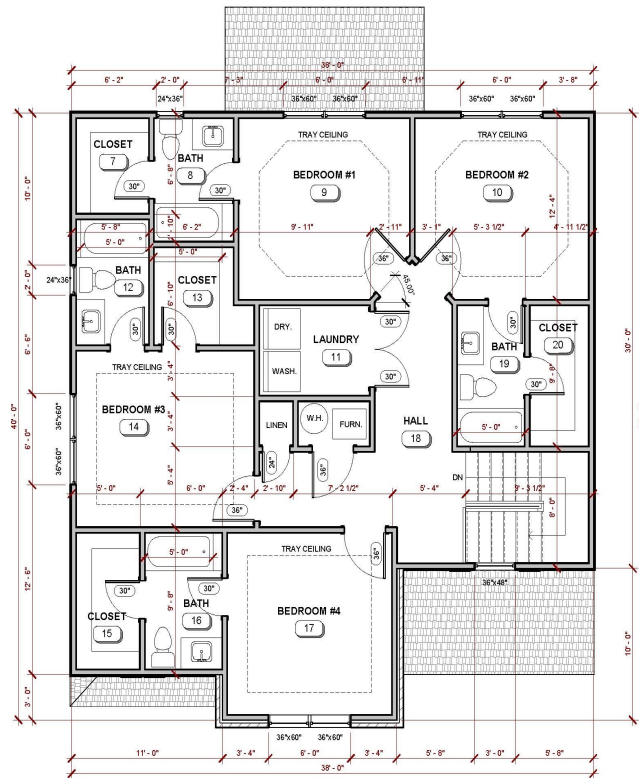
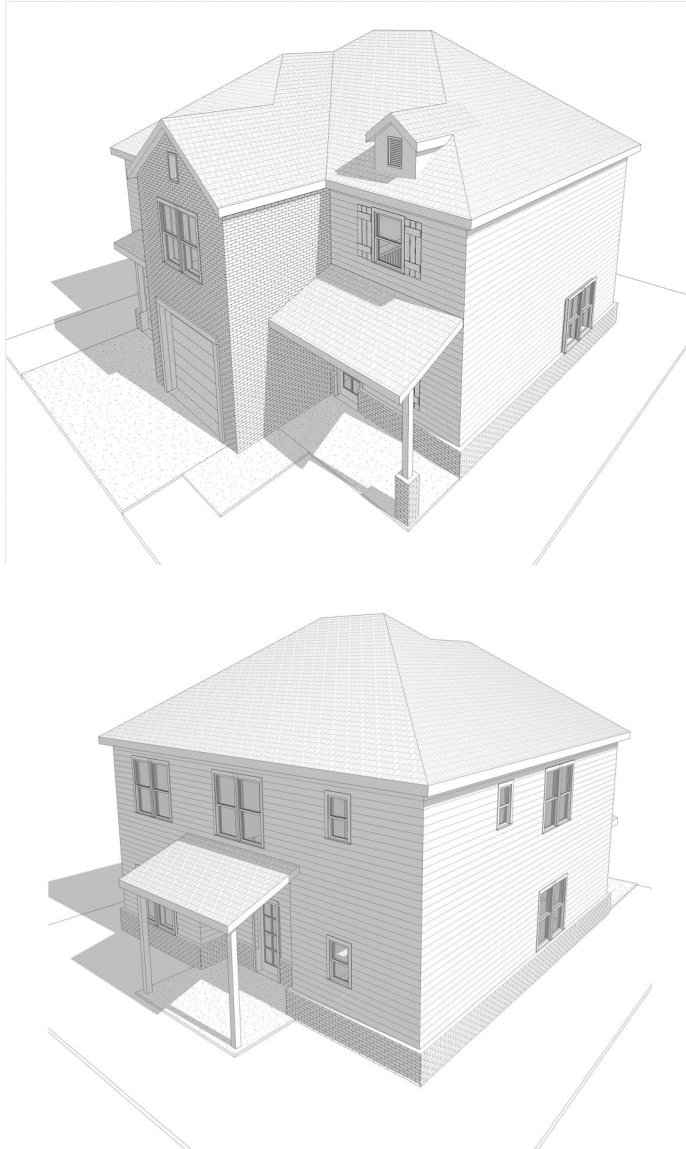
NON-ENDORSEMENT NOTICE

Ghan & Cooper Commercial Properties, LLC is not affiliated with, sponsored by, or endorsed by any commercial tenant or lessee identified in the marketing package. The presence of any corporation's logo or name is not intended to indicate or imply affiliation with, or sponsorship or endorsement by, said corporation of Ghan & Cooper Commercial Properties, LLC, its affiliates or subsidiaries, or any agent, product, service, or commercial listing of Ghan & Cooper Commercial Properties, LLC, and is solely included for the purpose of providing buyer/tenant/lessee information about this listing to prospective customers.

Ripple Meadows



Ripple Meadows



1387 N. Sicily Lane

Lot 2

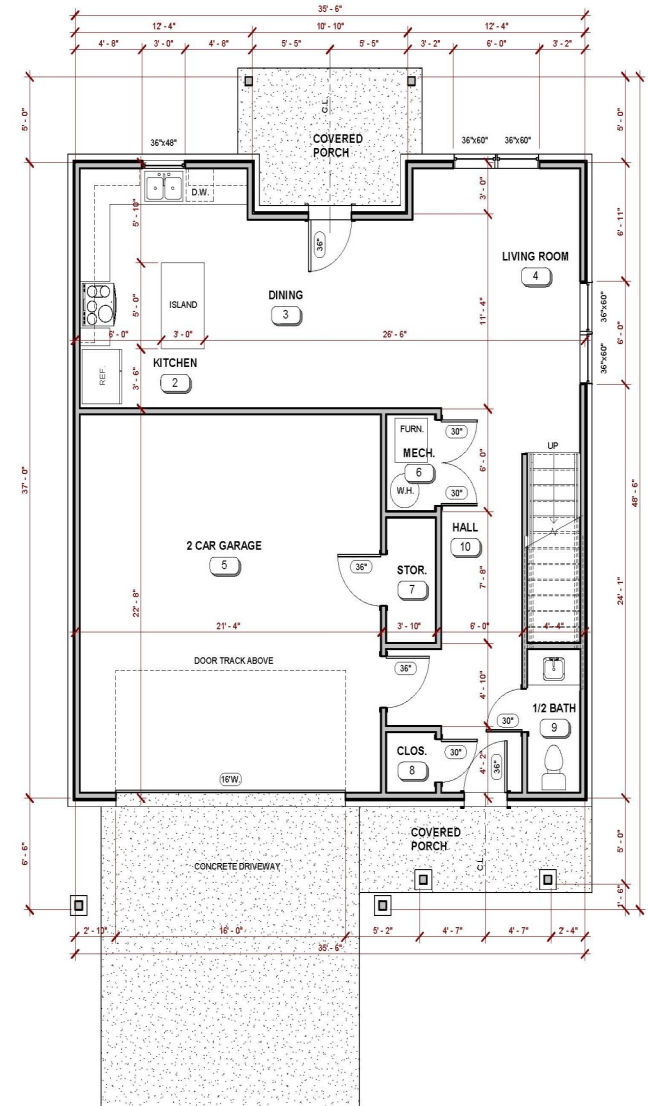
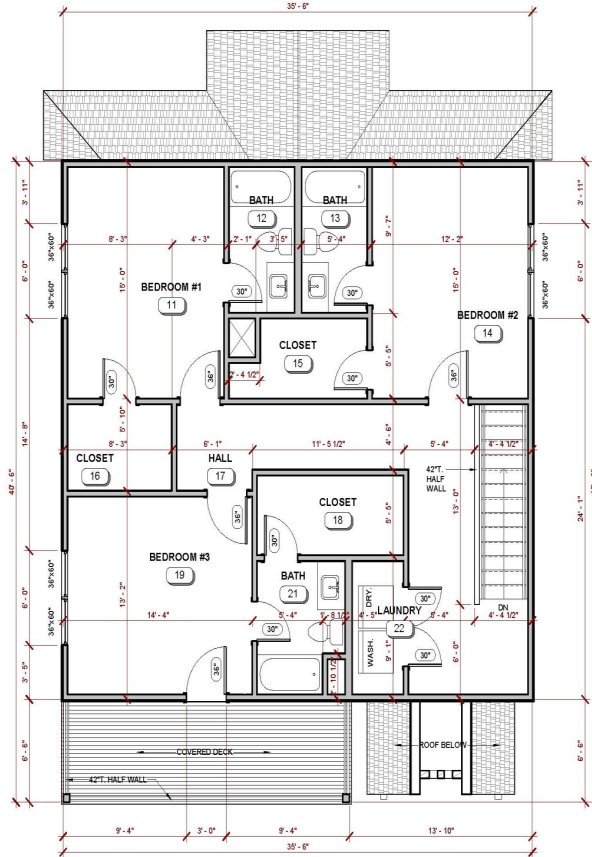
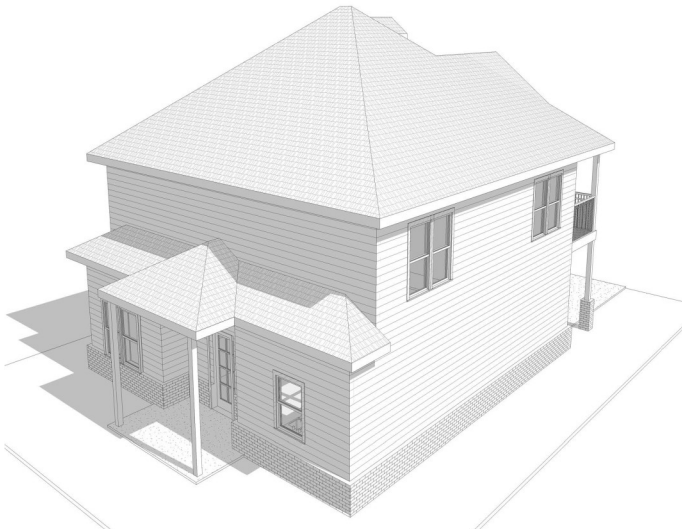
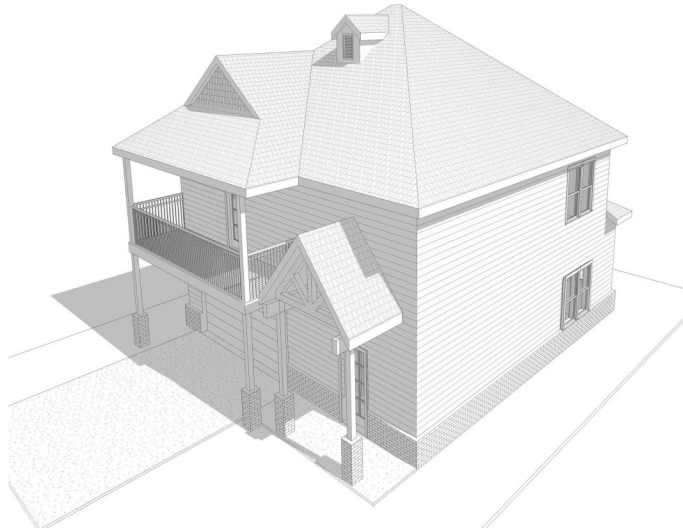
2,117 Heated SF

4 Bed

4.5 Bath

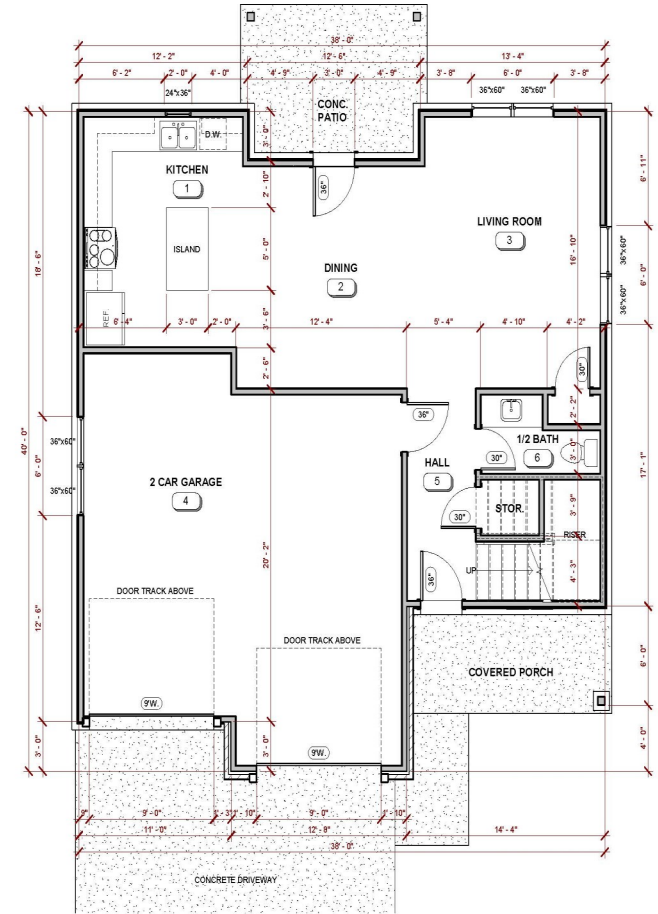
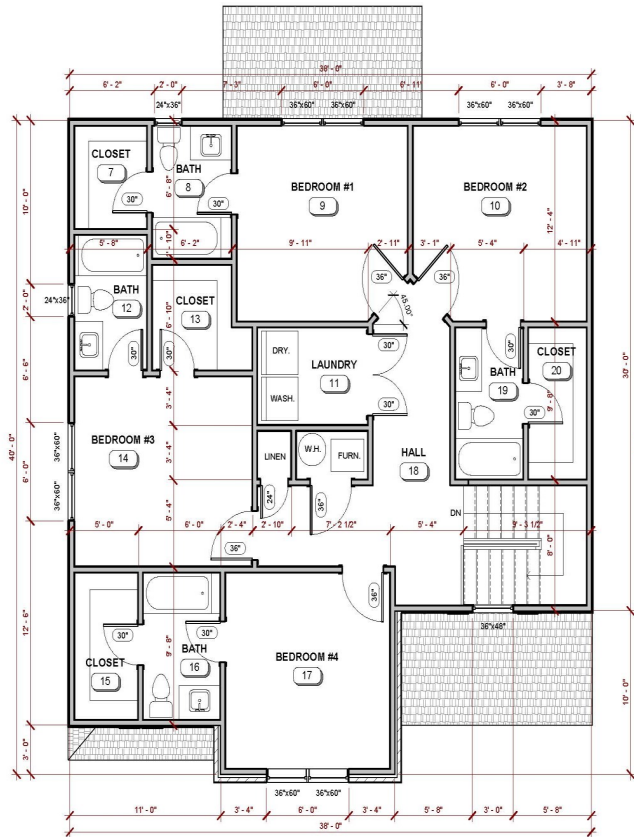
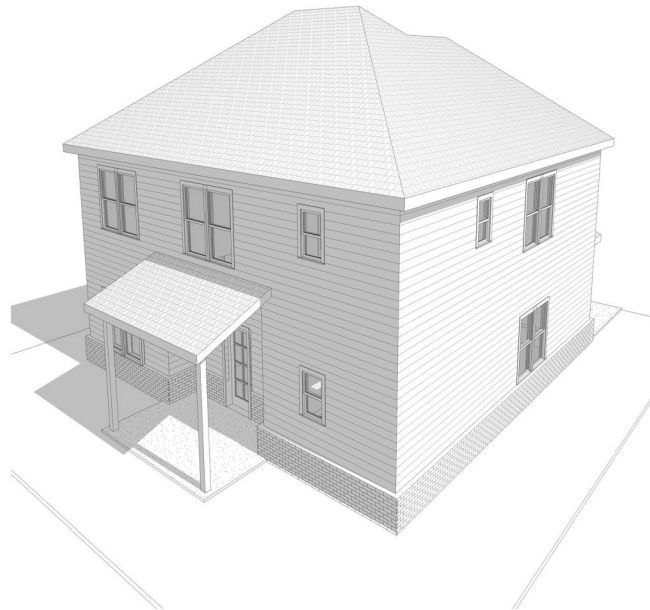
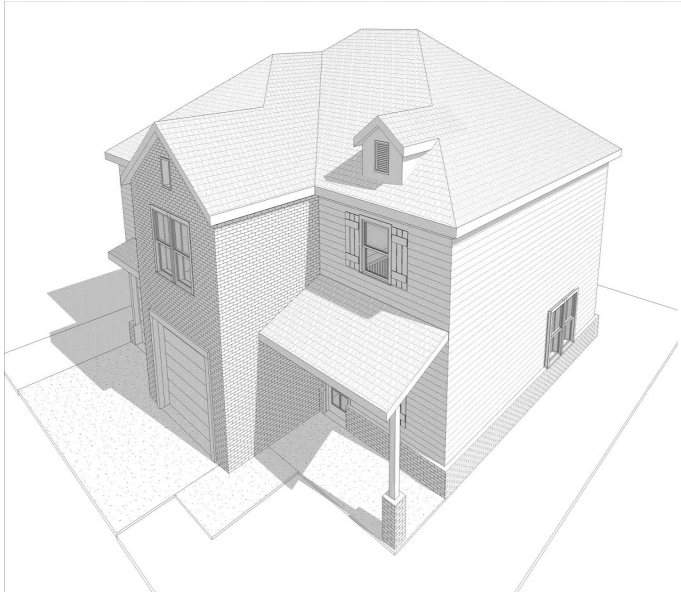
\$31,200 Yearly Income

Ripple Meadows



1381 N. Sicily Lane
Lot 3
1,976 Heated SF
3 Bed
3.5 Bath
\$23,400 Yearly Income

Ripple Meadows



1373 N. Sicily Lane

Lot 4

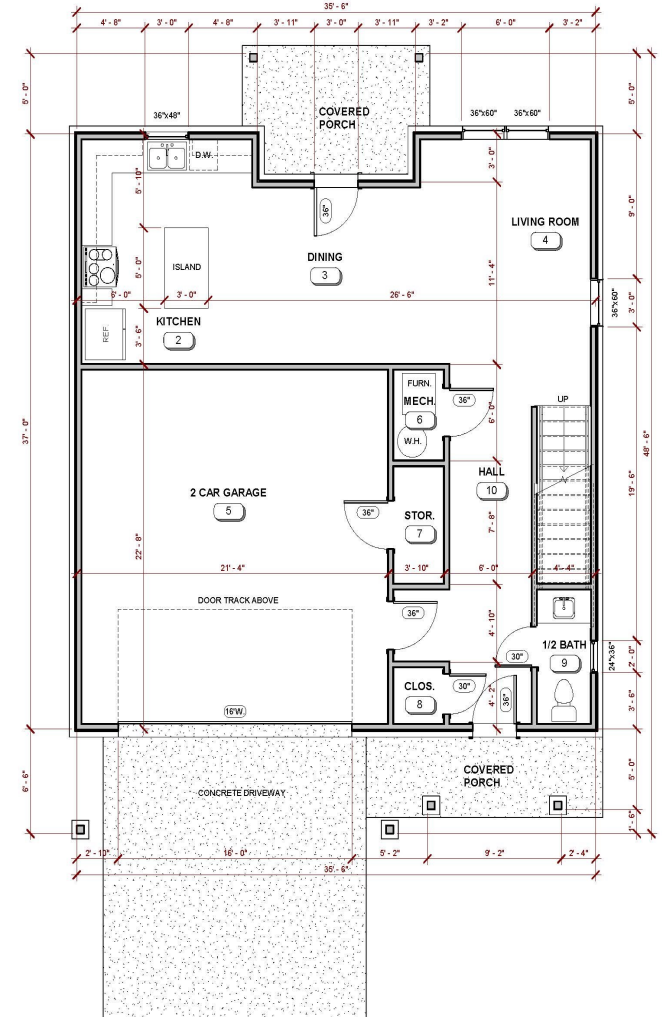
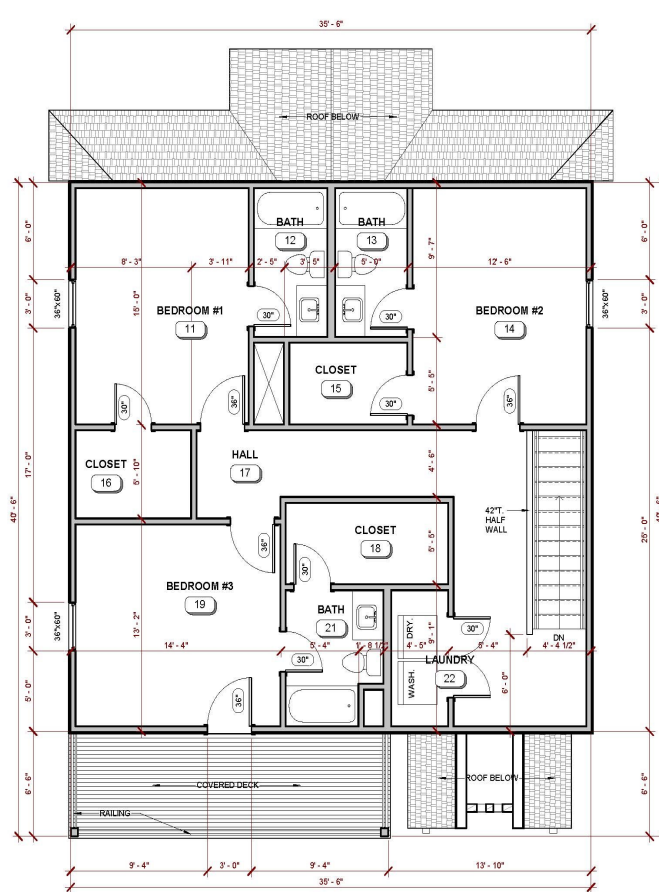
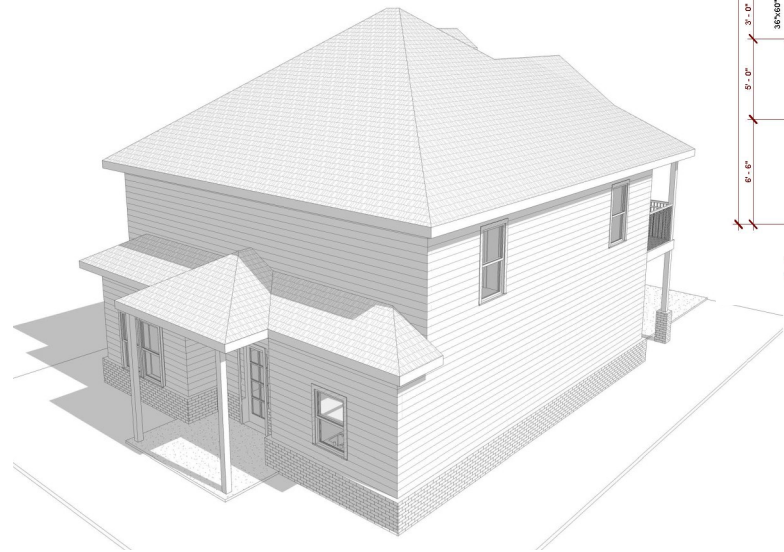
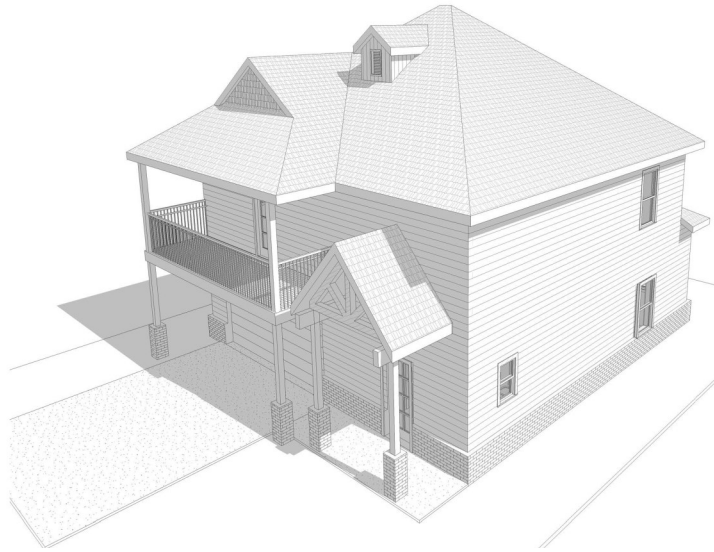
2,117 Heated SF

4 Bed

4.5 Bath

\$31,200 Yearly Income

Ripple Meadows



1365 N. Sicily Lane

Lot 5

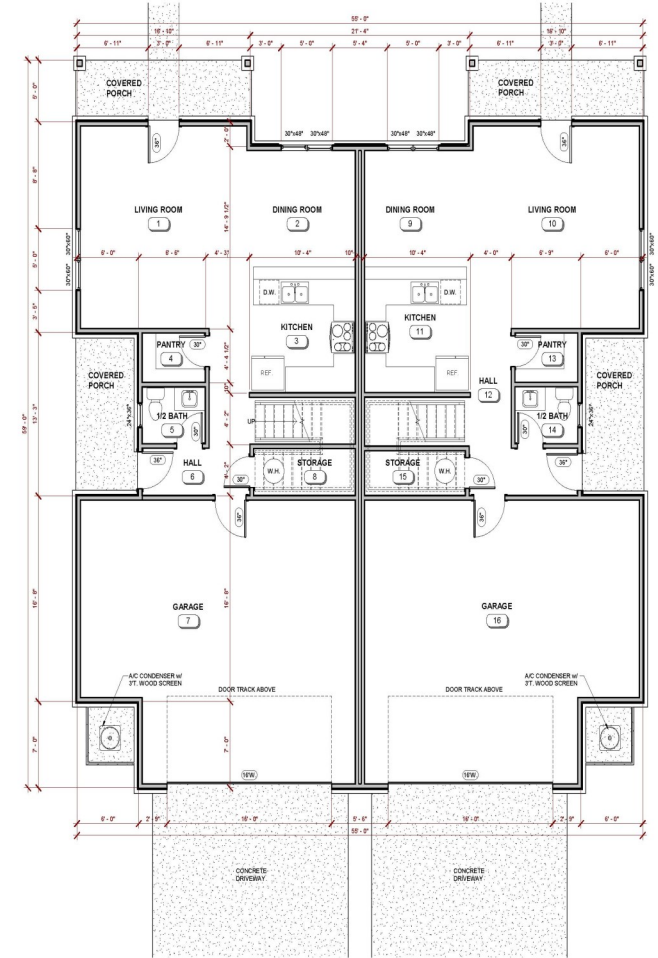
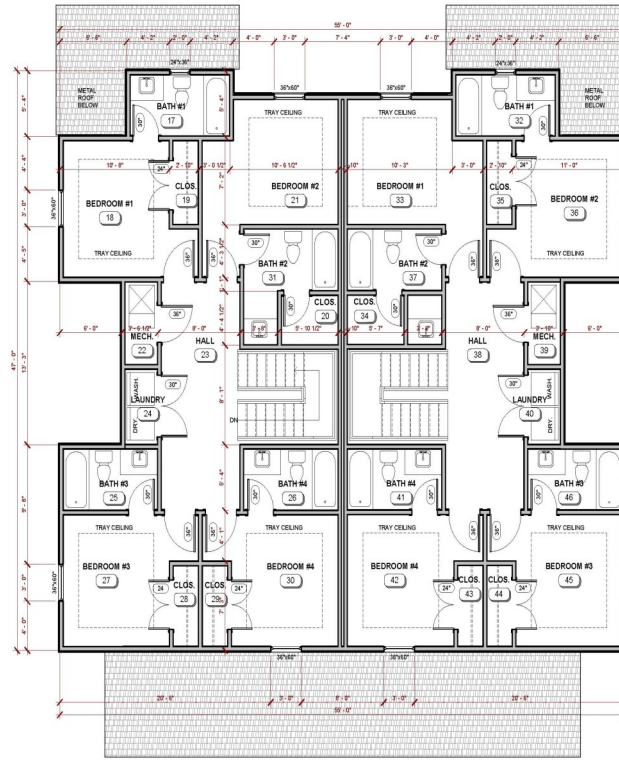
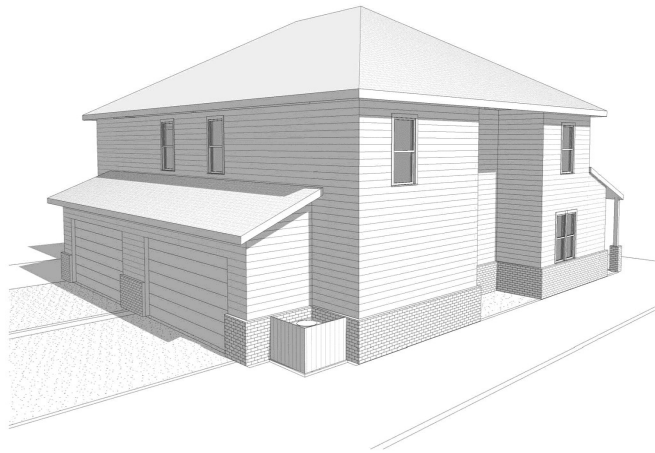
1,976 Heated SF

3 Bed

3.5 Bath

\$23,400 Yearly Income

Ripple Meadows



4156—4158 W. Sardinia Way

Lot 34

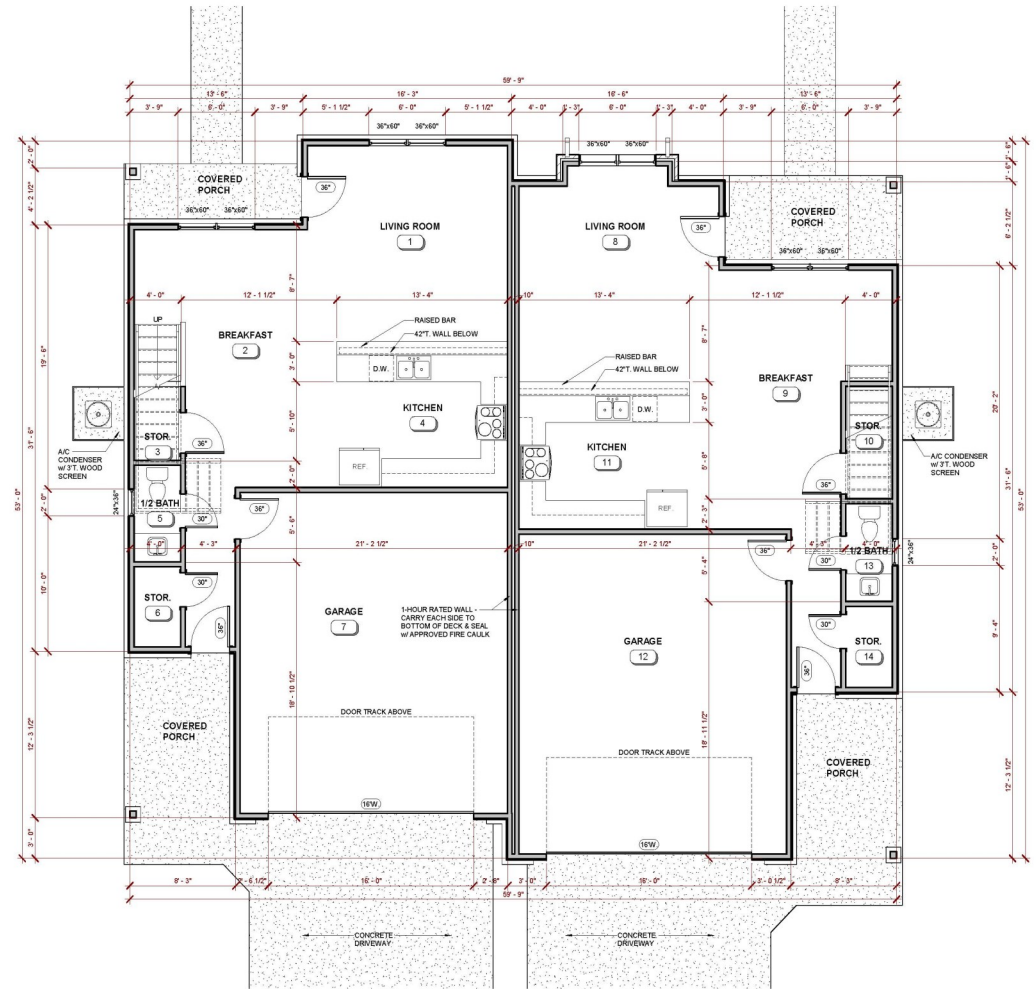
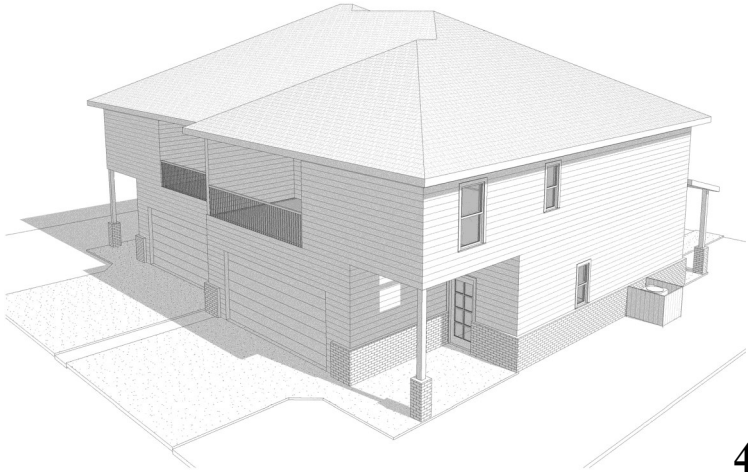
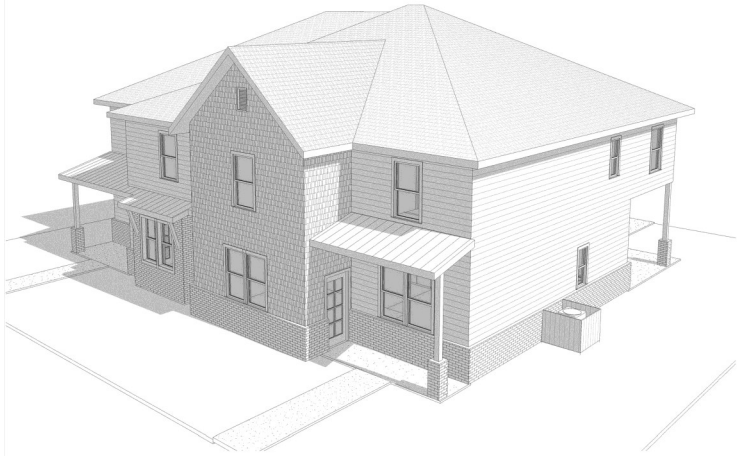
3,602 Heated SF

4 Bed per unit

4.5 Bath per unit

\$57,600 Yearly Income

Ripple Meadows



4170—4172 W. Sardinia Way

Lot 35

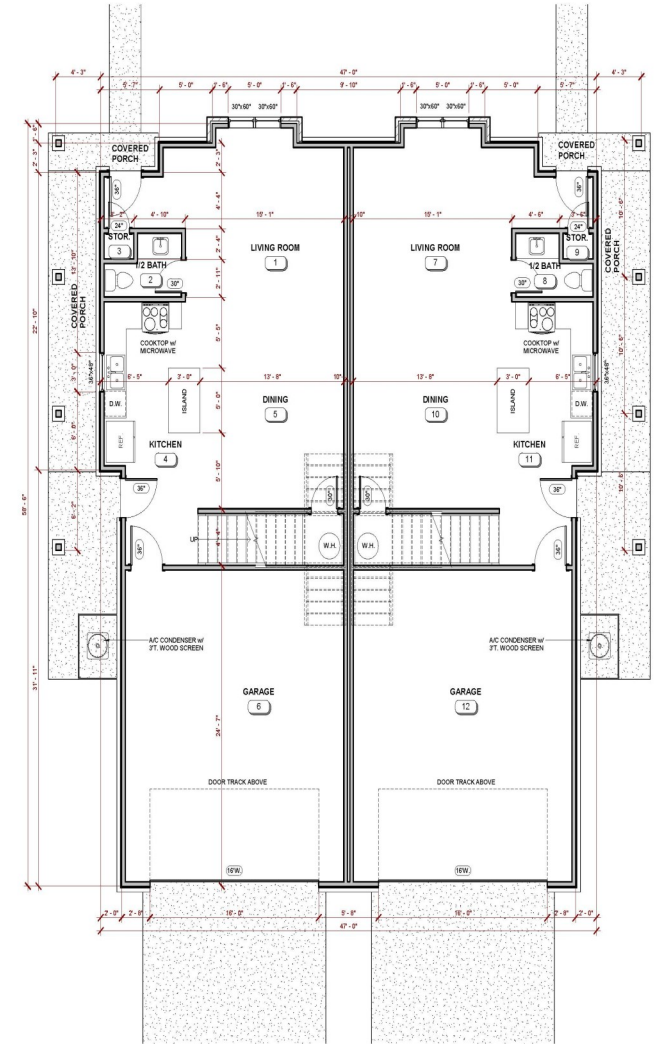
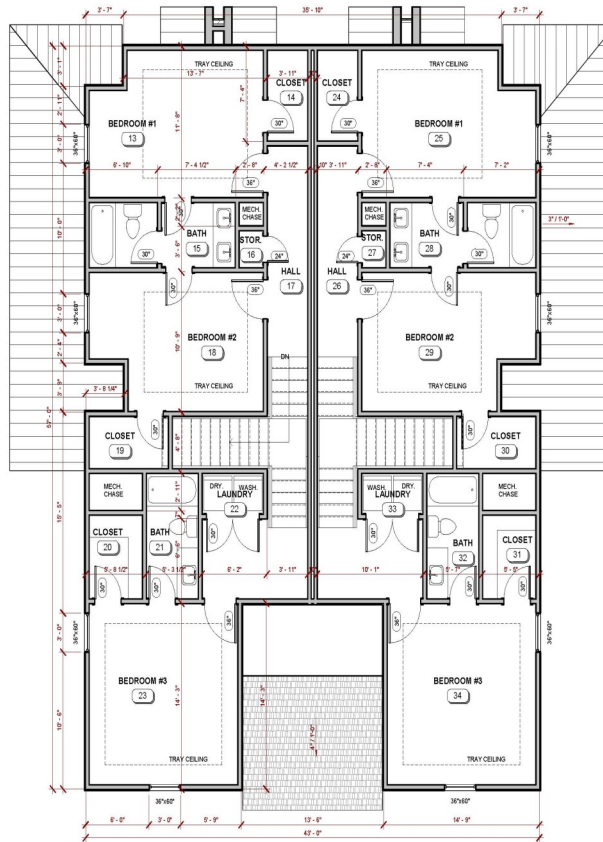
4,100 Heated SF

4 Bed per unit

4.5 Bath per unit

\$57,600 Yearly Income

Ripple Meadows



4184—4186 W. Sardinia Way

Lot 36

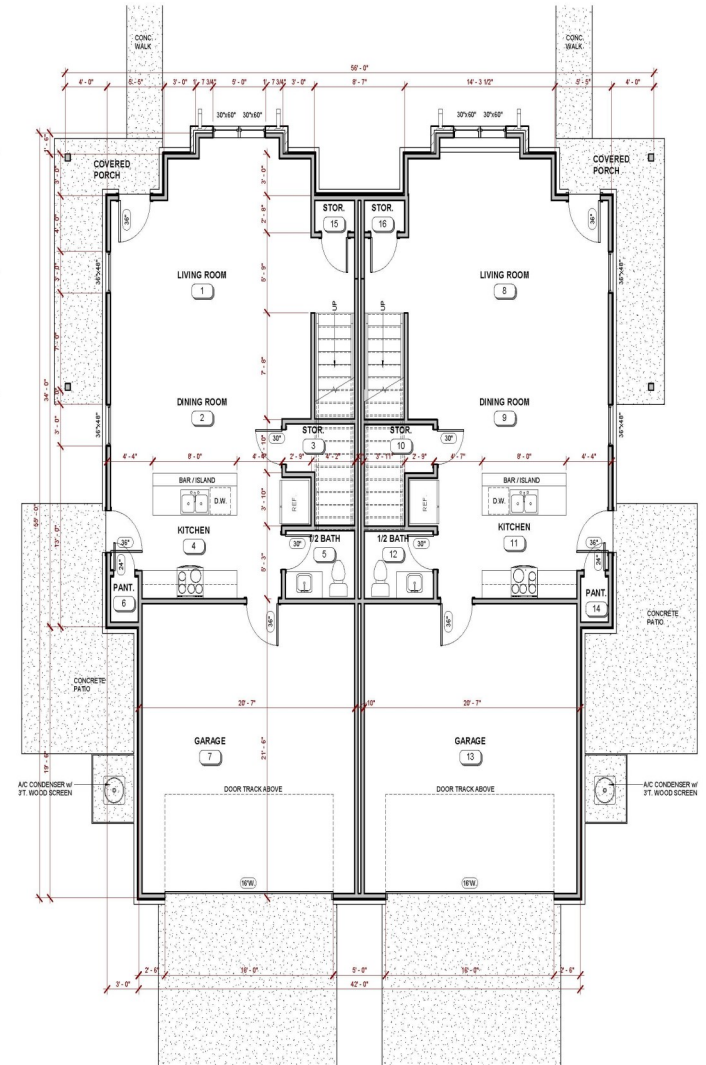
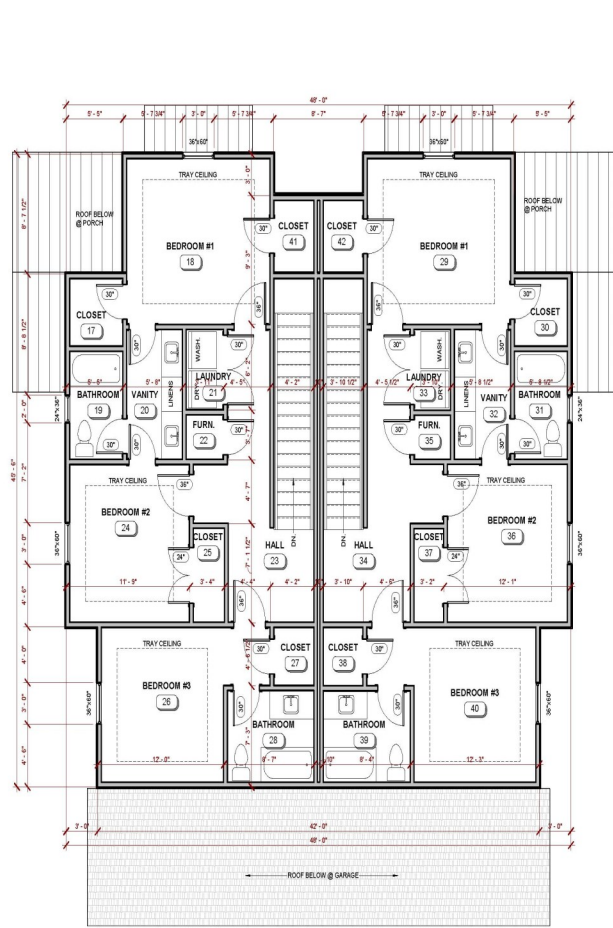
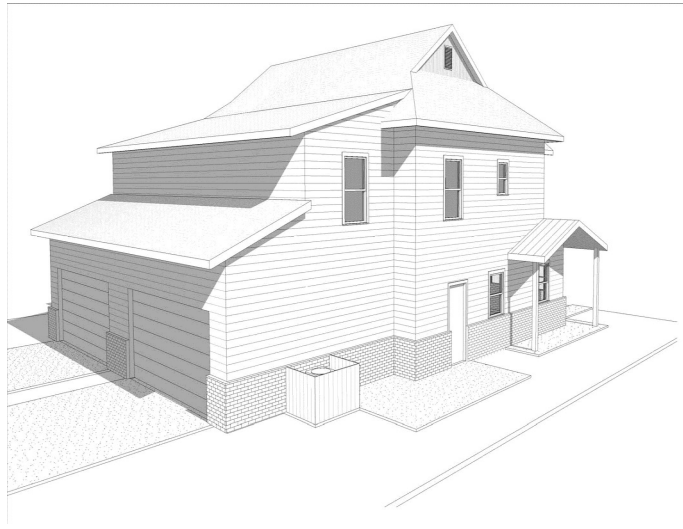
3,660 Heated SF

3 Bed per unit

2.5 Bath per unit

\$45,000 Yearly Income

Ripple Meadows



4191—4193 W. Santa Maria Lane

Lot 37

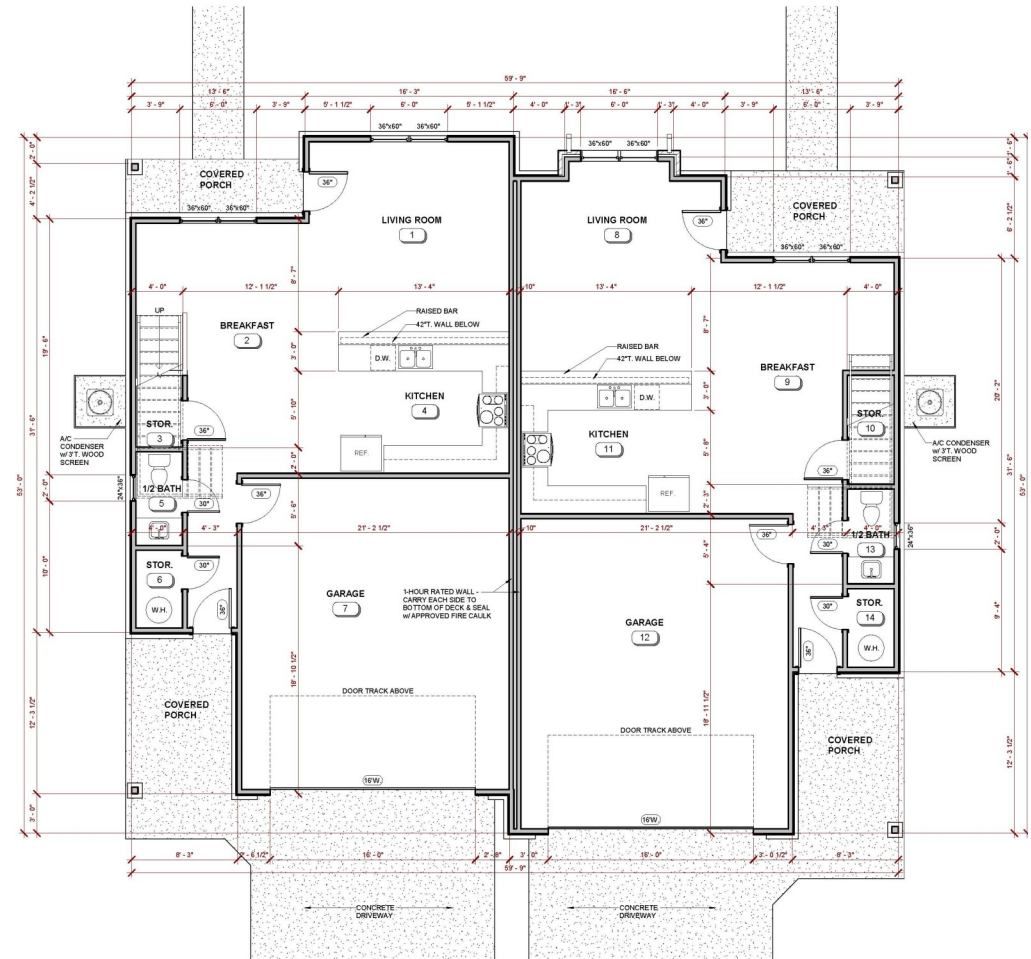
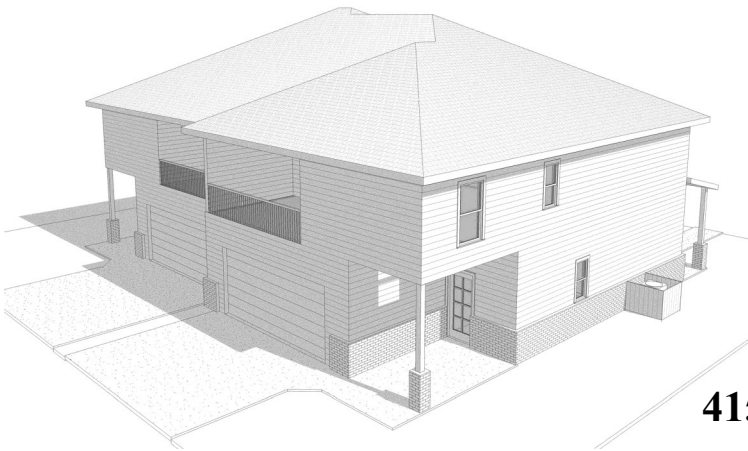
3,406 Heated SF

3 Bed per unit

2.5 Bath per unit

\$45,000 Yearly Income

Ripple Meadows



4157—4159 W. Santa Maria Lane

Lot 39

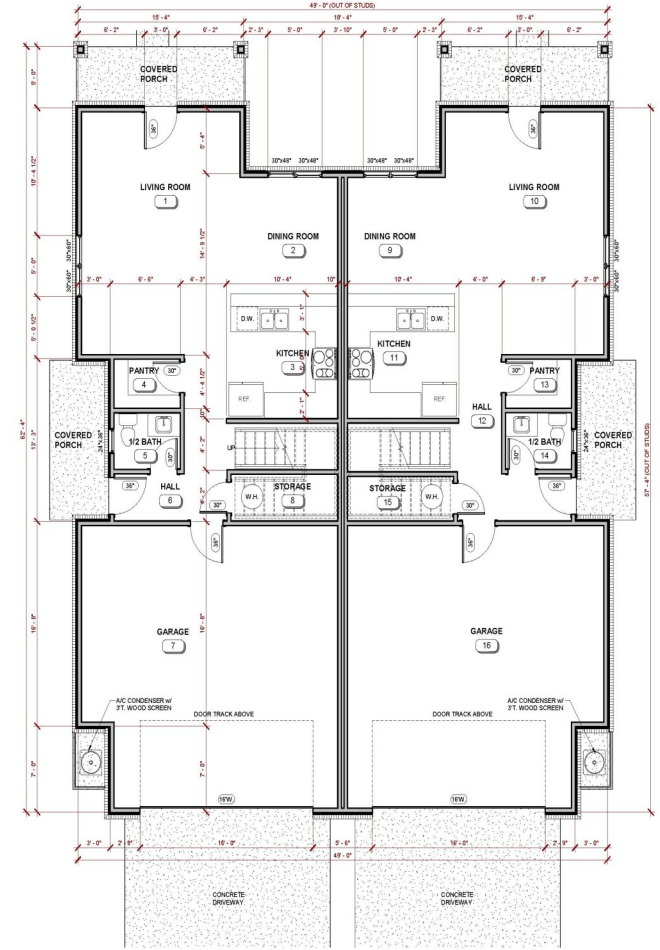
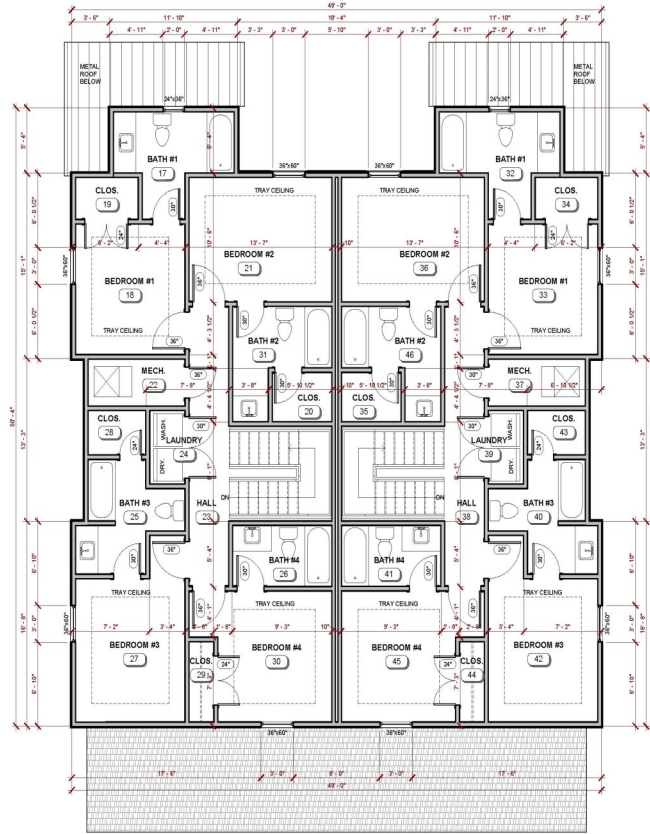
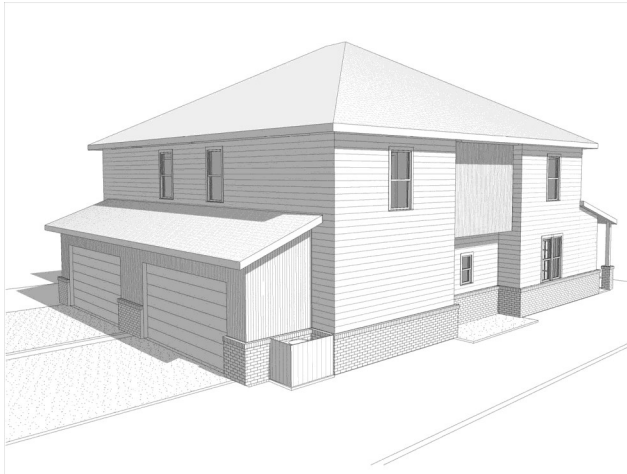
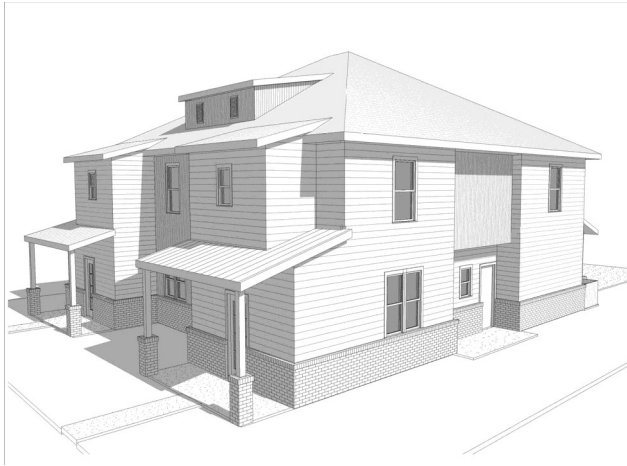
4,100 Heated SF

4 Bed per unit

4.5 Bath per unit

\$57,600 Yearly Income

Ripple Meadows



1253—1255 N. Ripple Road

Lot 45

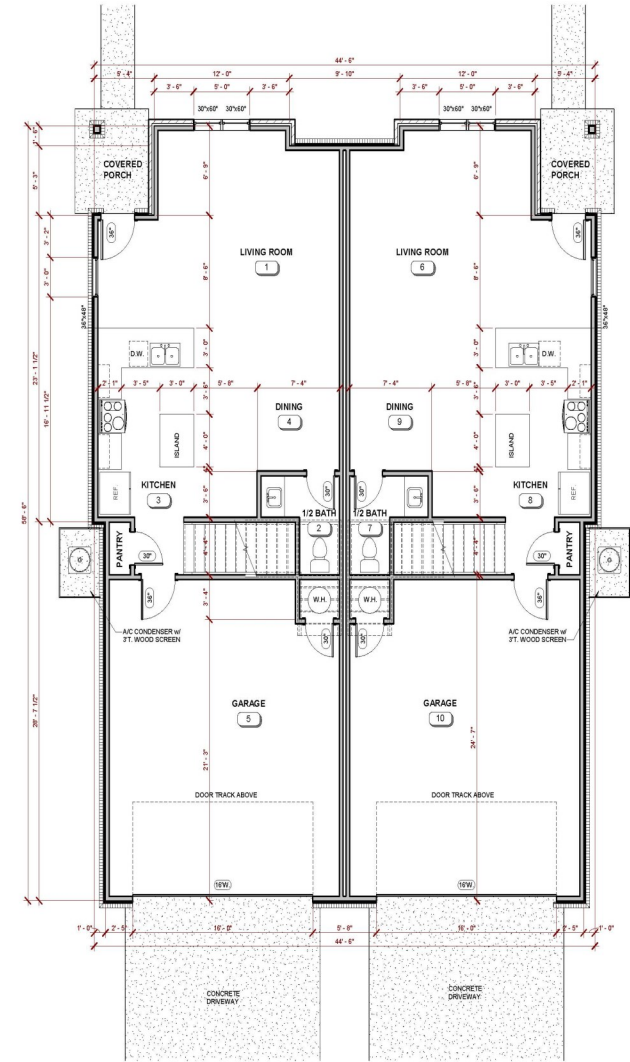
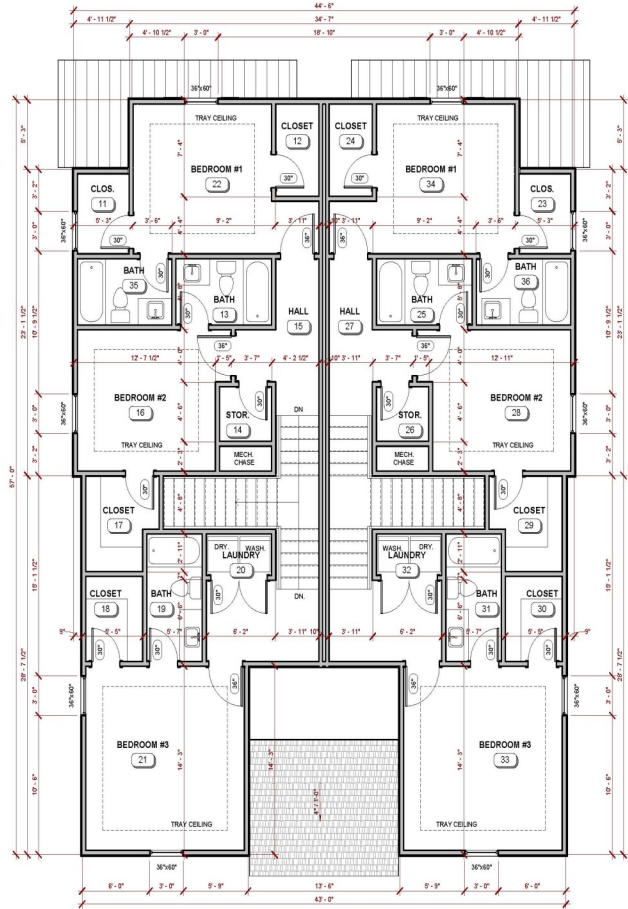
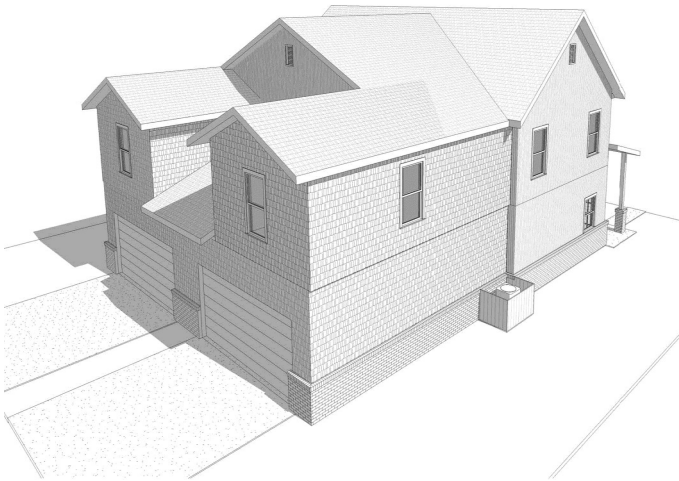
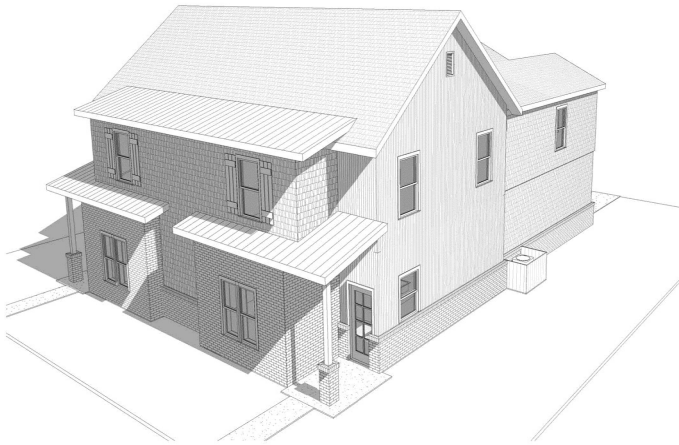
3,596 Heated SF

4 Bed per unit

4.5 Bath per unit

\$57,600 Yearly Income

Ripple Meadows



1275—1277 N. Ripple Road

Lot 46

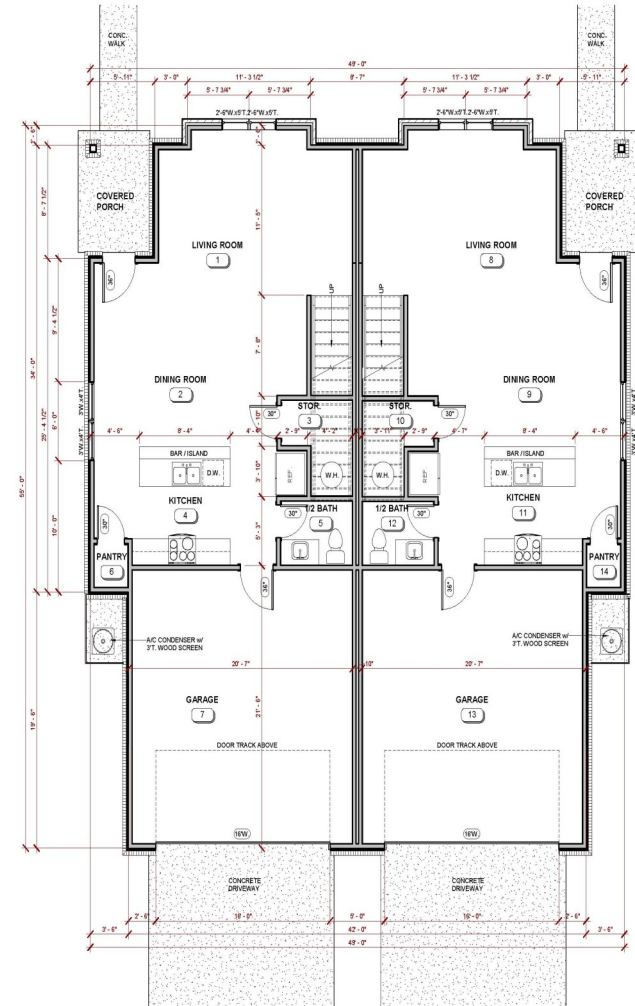
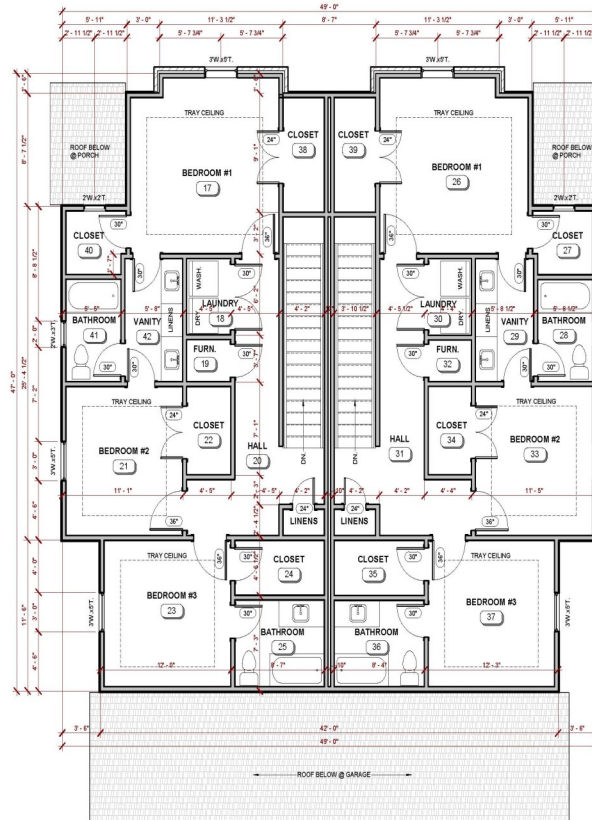
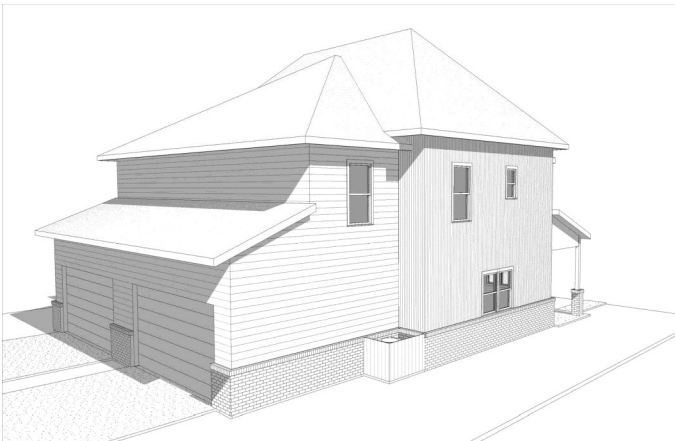
3,606 Heated SF

3 Bed per unit

3.5 Bath per unit

\$45,000 Yearly Income

Ripple Meadows



4064—4066 W. Santa Maria Lane

Lot 47

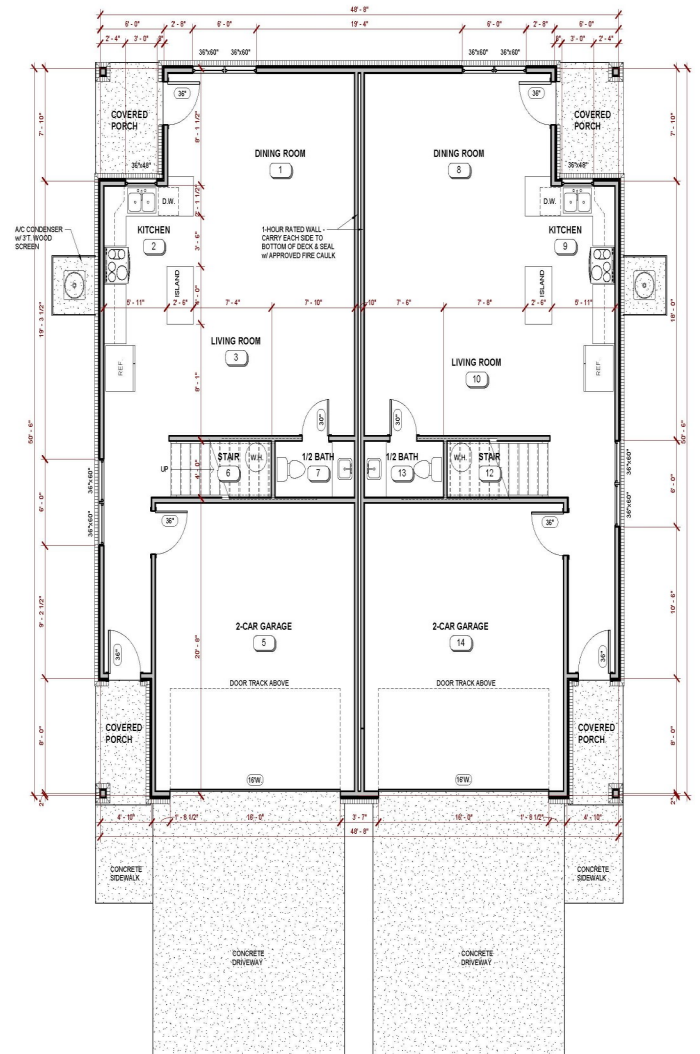
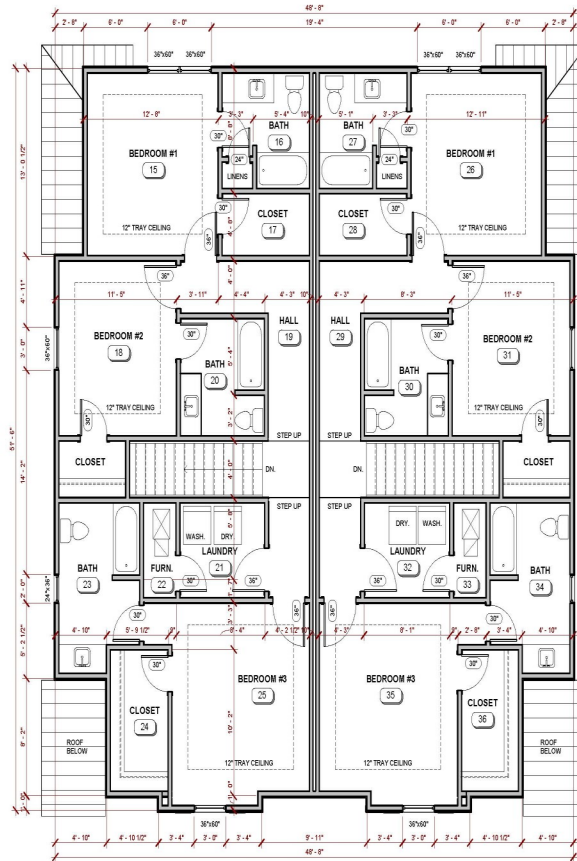
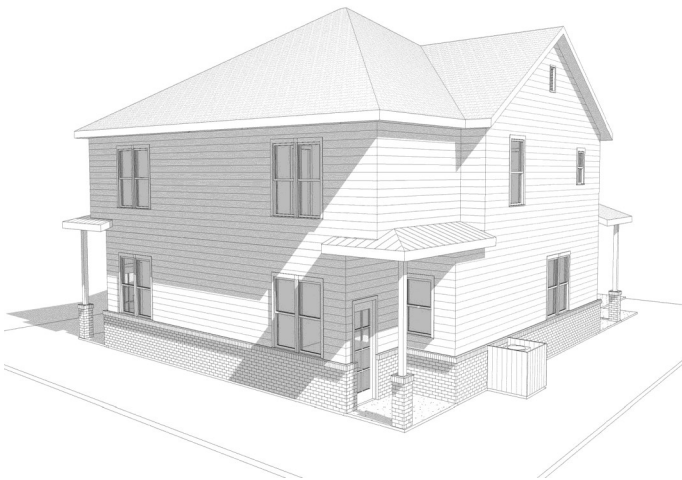
3,480 Heated SF

3 Bed per unit

2.5 Bath per unit

\$45,000 Yearly Income

Ripple Meadows



4076—4078 W. Santa Maria Lane

Lot 48

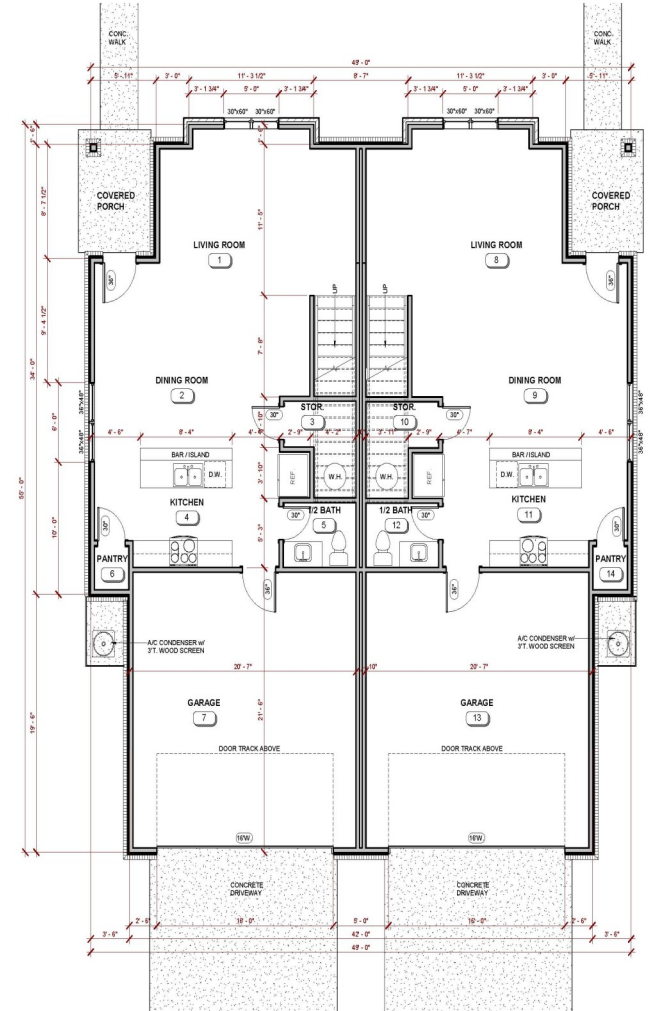
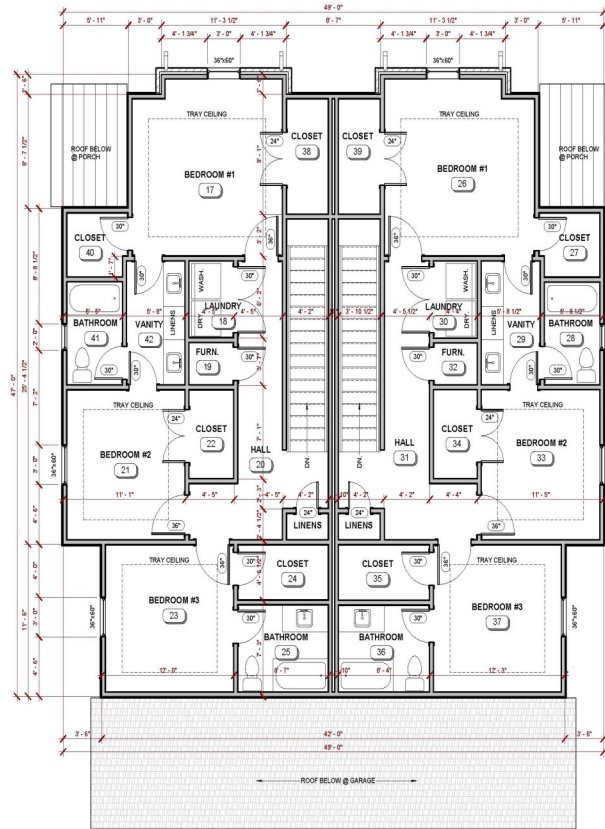
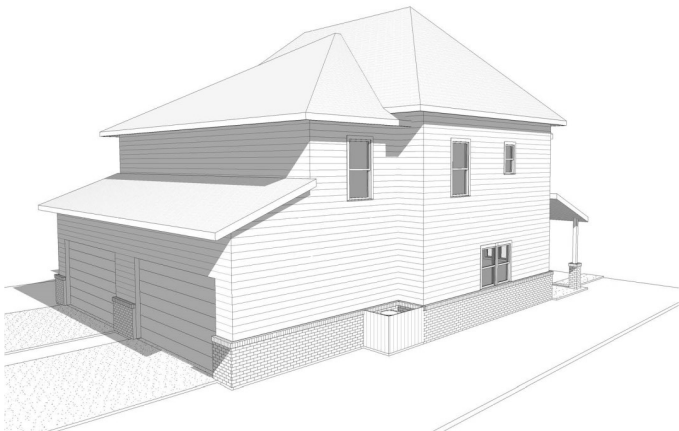
3,722 Heated SF

3 Bed per unit

3.5 Bath per unit

\$45,000 Yearly Income

Ripple Meadows



4090—4092 W. Santa Maria Lane

Lot 49

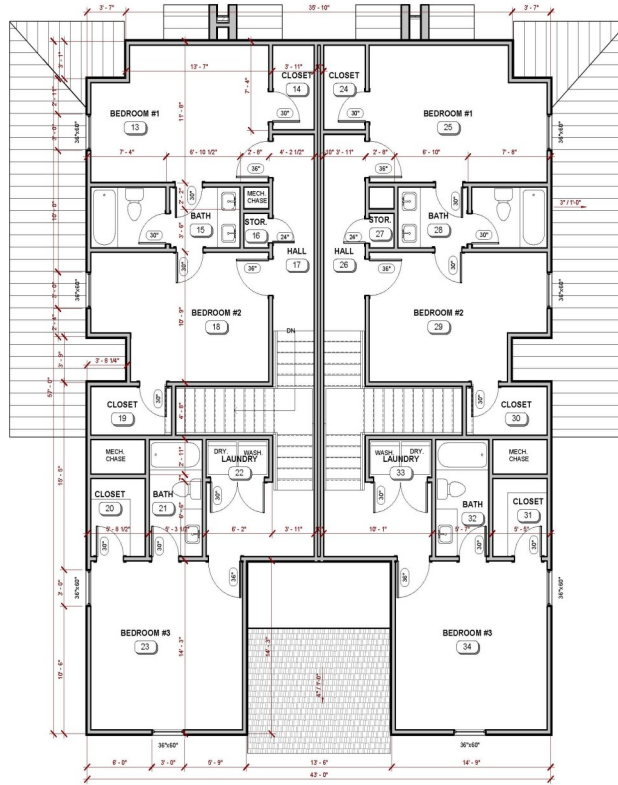
3,480 Heated SF

3 Bed per unit

2.5 Bath per unit

\$45,000 Yearly Income

Ripple Meadows



1292—1294 N. Sicily Lane

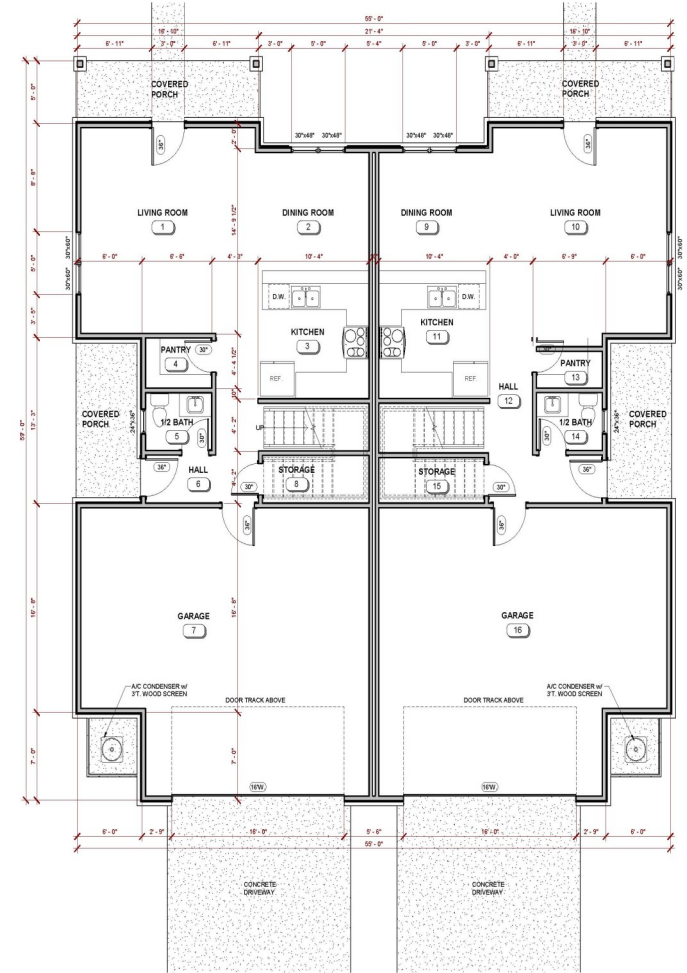
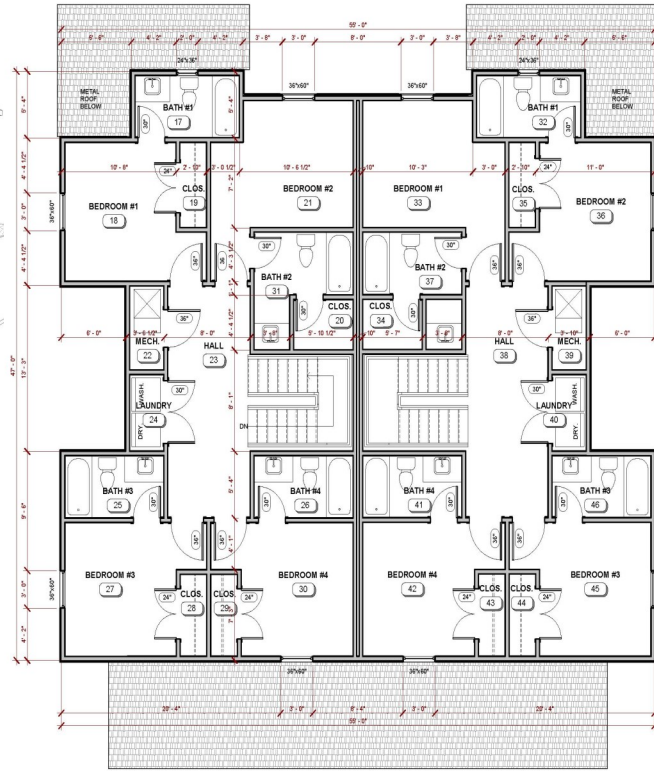
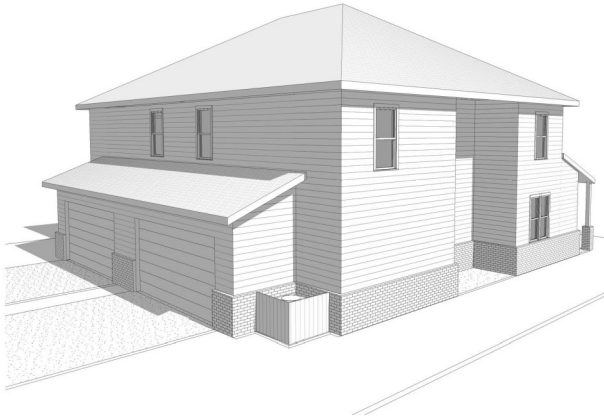
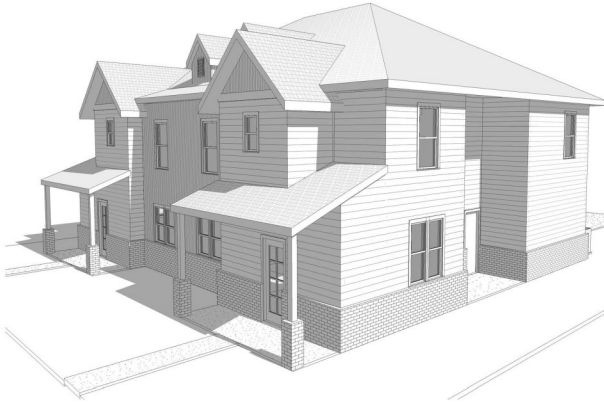
Lot 65

3,660 Heated SF

3 Bed per unit

2.5 Bath per unit

Ripple Meadows



1316—1318 N. Sicily Lane

Lot 66

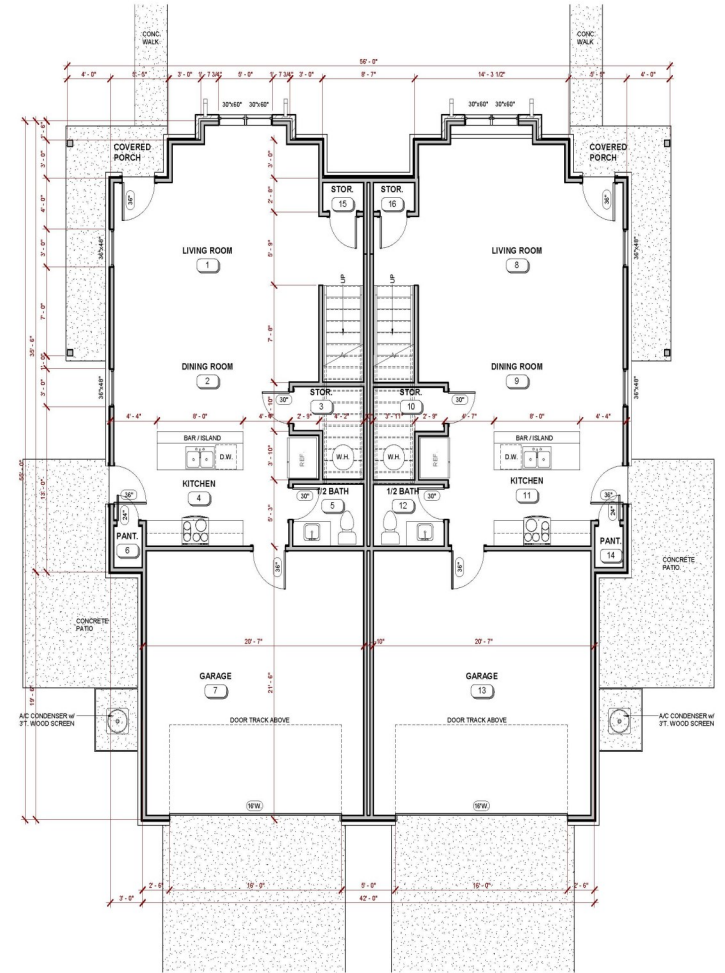
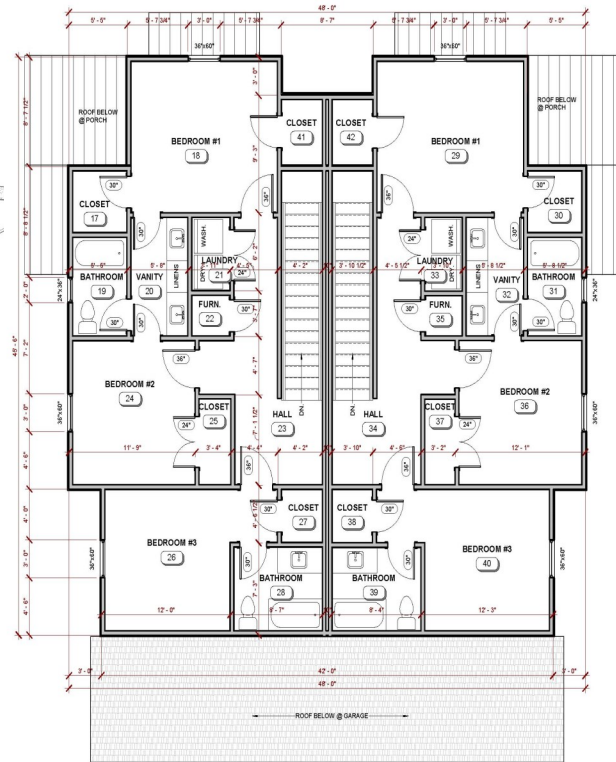
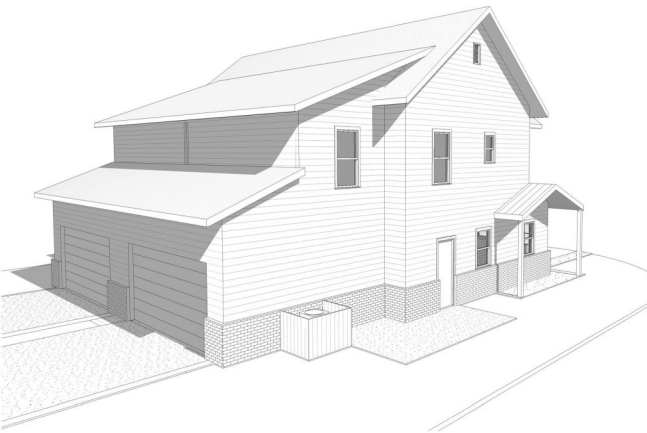
3,602 Heated SF

4 Bed per unit

4.5 Bath per unit

\$57,600 Yearly Income

Ripple Meadows



1340—1342 N. Sicily Lane

Lot 67

3,406 Heated SF

3 Bed per unit

2.5 Bath per unit

\$45,000 Yearly Income