

For Lease

3801 S 1st St & 515 Post Rd, Austin TX 78704



PROPERTY FEATURES

Buildings: 2,757 sq. ft **Lots:** 16,000 sq. ft.

3801 S. First

1,720 sq. ft. on .19 Acres 15 parking spaces

Zoned LO-NP

515 Post Road Dr.

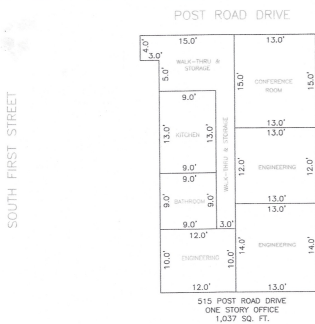
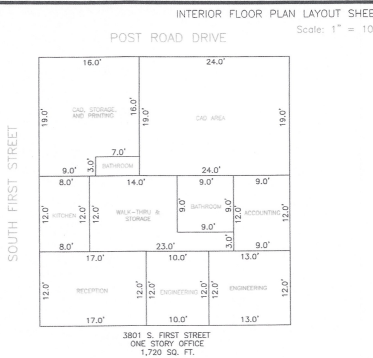
1,037 sq. ft. on .177 Acres 3 parking spaces

Zoned NO-MU-CO-NP





**3801 S 1st St &
515 Post Rd,
Austin TX 78704**



RIVER CITY ENGINEERING
1011 W. COUNTY LINE ROAD
NEW BRAUNFELS, TEXAS 78130
PHONE: (830) 625-0337
FAX: 830-625-0337
© 2014 RIVER CITY ENGINEERING

SHEET 2 OF 2

DATE: 10-15-14

Located just blocks from the bustling South Congress District, these properties are surrounded by amenities making it a prime location for business. Elementary schools and medical facilities are within walking distance.

Multiple luxury apartment buildings pop up throughout South First Street attracting an appealing demographic. The property is one block from the center of Ben White Blvd allowing for easy access to downtown Austin and Austin-Bergstrom International Airport.