

1254 MYRTLE AVENUE

BUSHWICK, BROOKLYN



RETAIL SPACE
FOR LEASE

SPACE HIGHLIGHTS

LOCATION

Myrtle Avenue
& Cedar Street

SPACE

650 SF

CEILING HEIGHT

9.5 FT

FRONTAGE

22.5 FT

DIMENSIONS

23 FT x 28 FT

ZONING

R6

OCCUPANCY

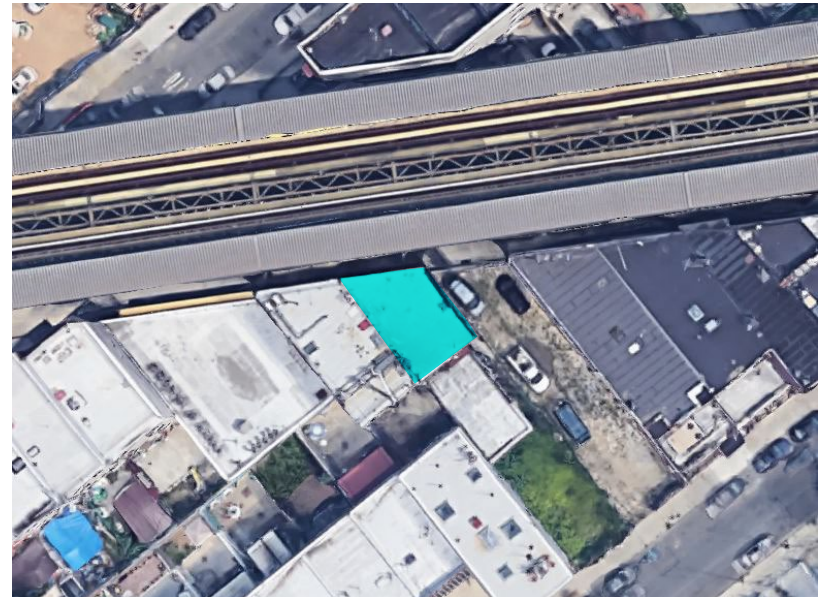
Immediate

ASKING RENT

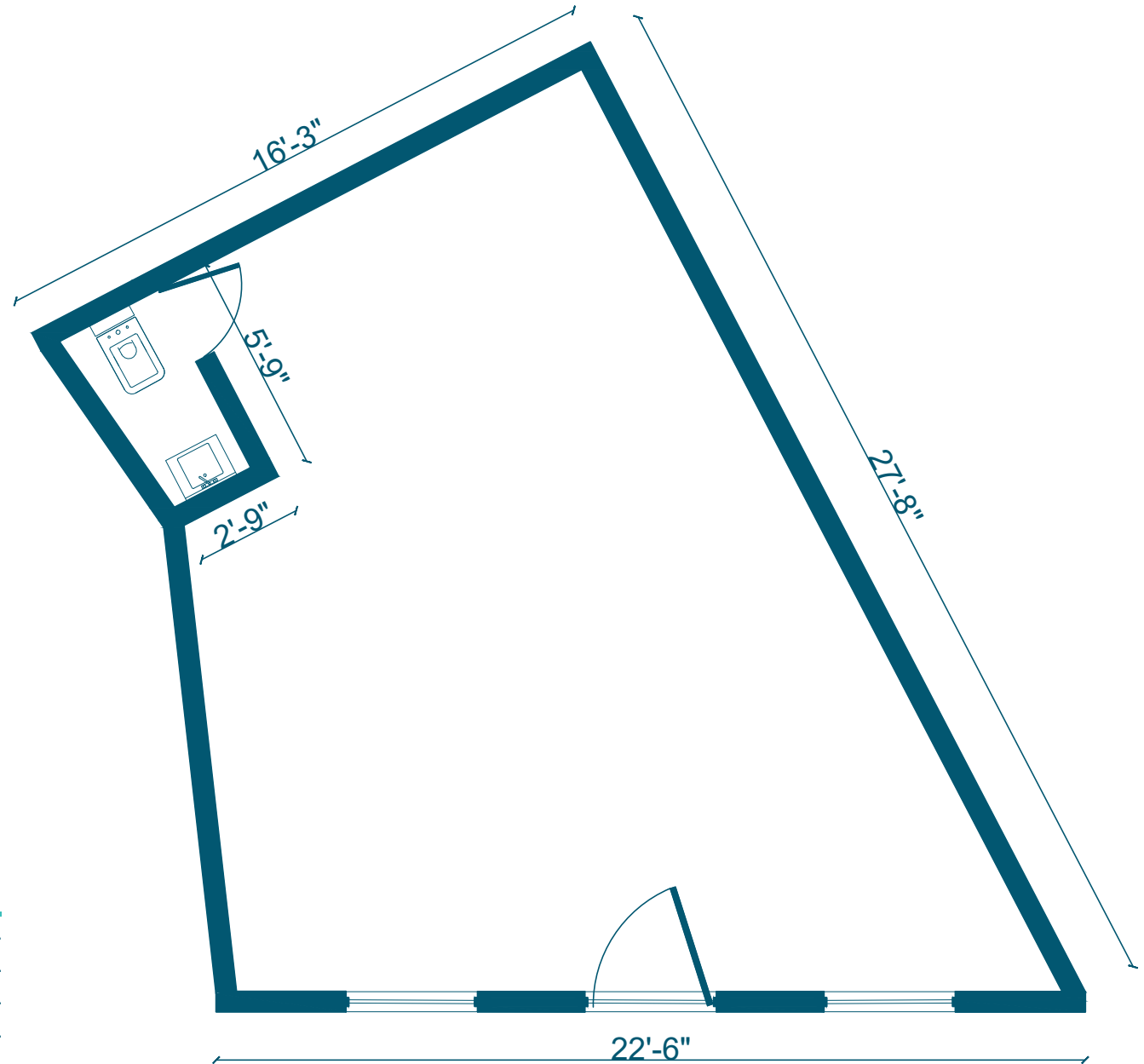
Upon Request

HIGHLIGHTS

- EXCELLENT, HIGH-TRAFFIC Retail Space, on Myrtle, next to M-Train (Central Avenue Stop).
- White-Boxed
- HVAC
- High Ceilings
- Restroom
- Large Windows (Natural Light)
- Security [roll] door



FLOORPLANS & DETAILS



GROUND FLOOR

Size	650 SF
Ceiling Height	9.5 FT
Frontage	22.5 FT
Dimensions	23 FT x 28 FT

BUSHWICK BROOKLYN

1254 MYRTLE AVENUE

EXISTING CONDITION



BUSHWICK BROOKLYN

1254 MYRTLE AVENUE

EXISTING CONDITION



BUSHWICK BROOKLYN

1254 MYRTLE AVENUE

NEIGHBORHOOD DEMOGRAPHICS



184,245

POPULATION
WITHIN 1-MILE
RADIUS



34.6 Yrs

AVERAGE
POPULATION
AGE



7.55%

POPULATION
GROWTH
SINCE 2010



\$65,171

AVERAGE HHI
WITHIN 1-MILE
RADIUS



4,237

TOTAL BUSINESSES
WITHIN 1-MILE
RADIUS



\$1.2 bn

ANNUAL SPENDING
WITHIN 1-MILE
RADIUS

BUSHWICK BROOKLYN

1254 MYRTLE AVENUE

NEIGHBORHOOD & TRANSPORTATION

NEIGHBORHOOD TENANTS

Bossa Nova Civic Club
Zefe's
OMG pizza
Bushwick Public House
Little Mo
FirstLive Studio
Space 776 Gallery
Hart Bar
Birdy's
Dollar General
Archie's Bar & Pizza
Pera Grocery
Brooklyn Whiskers
Le Garage
Bushwick Bakery
Richie's Gym
Sol Sips
Marco's
Buntopia
Baby Skips
Tea Boté
Maite
The Juice Box
Mr. DELI & GRILL
Central Wine & Liquor
Gaze Garden Floral

TRANSPORTATION

- 1 Min Walk at Central Avenue (0.0 mi)
- 9 Min Walk at Knickerbocker Avenue (0.4 mi)
- 9 Min Walk at Myrtle Avenue (0.4 mi)
- 10 Min Walk at Kosciuszko Street (0.5 mi)
- 13 Min Walk at DeKalb Avenue (0.7 mi)



BUSHWICK BROOKLYN

1254 MYRTLE AVENUE

CONTACT

