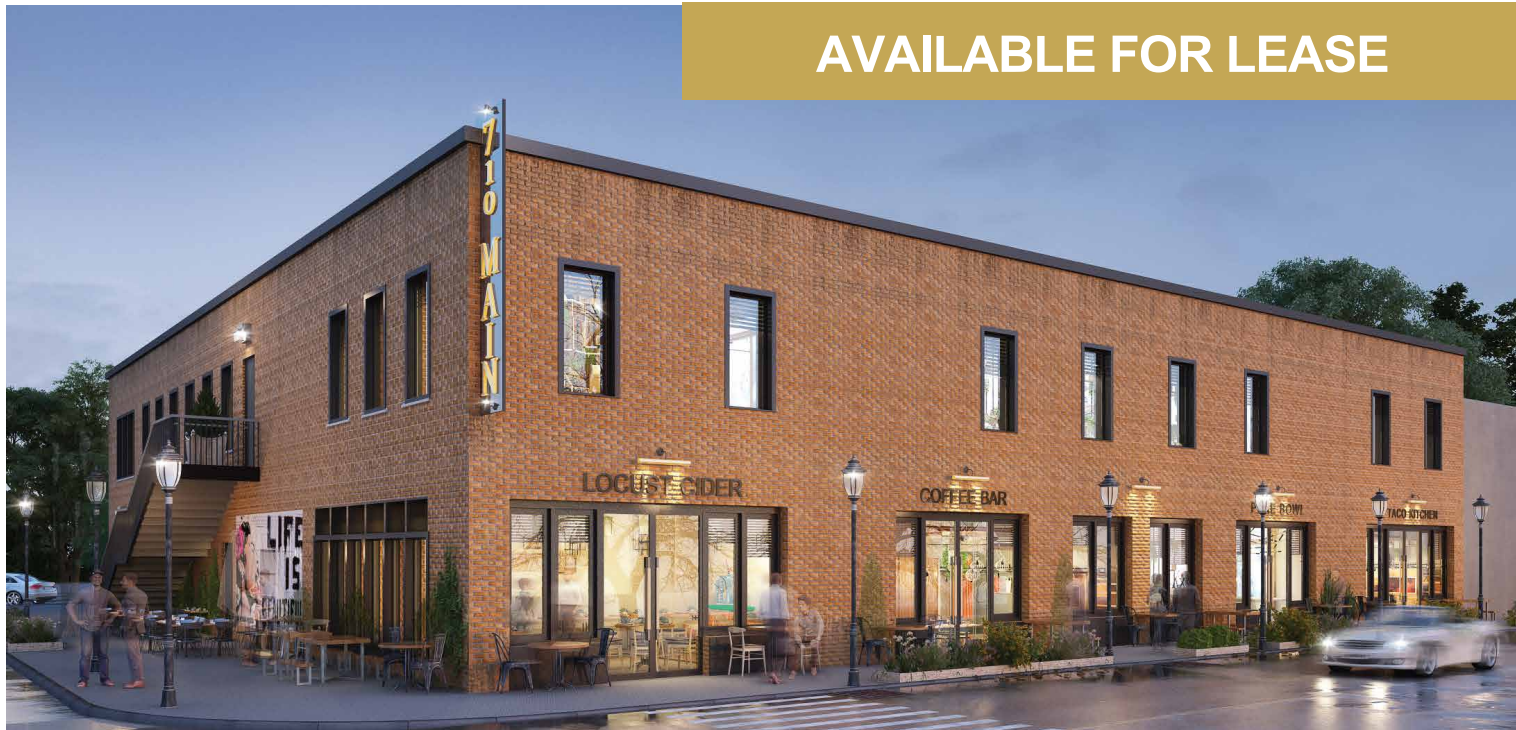


**AVAILABLE FOR LEASE**

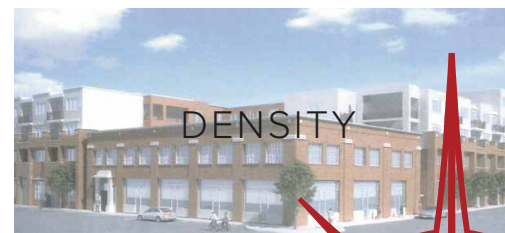
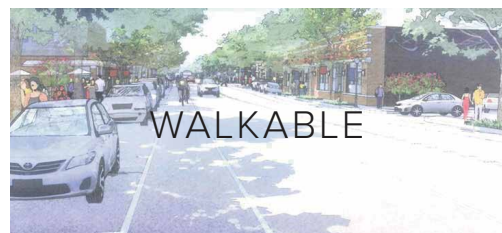
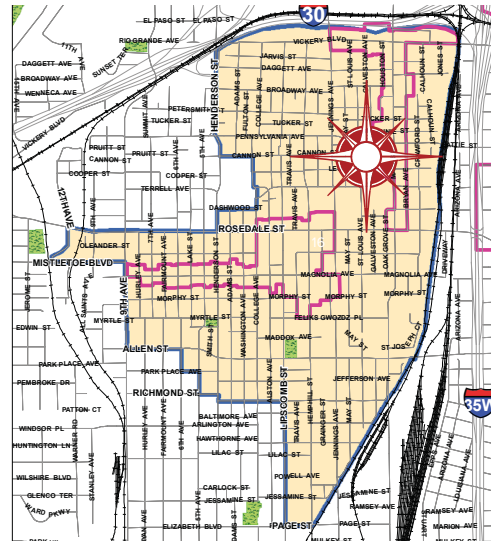


**710 SOUTH MAIN STREET**  
 FORT WORTH, TEXAS 76104

- 2,407 SF Ground Floor Retail [ \$23 psf NNN]
- 9,600 SF 2nd Floor Creative Office/Executive Office Suites [ \$23-\$25 psf + E]
- Flexible Retail Space or Professional Office with S. Main Frontage & Visibility
- 42 Off Street Parking Spaces
- 175 Street Parking Spaces Within 600' Radius

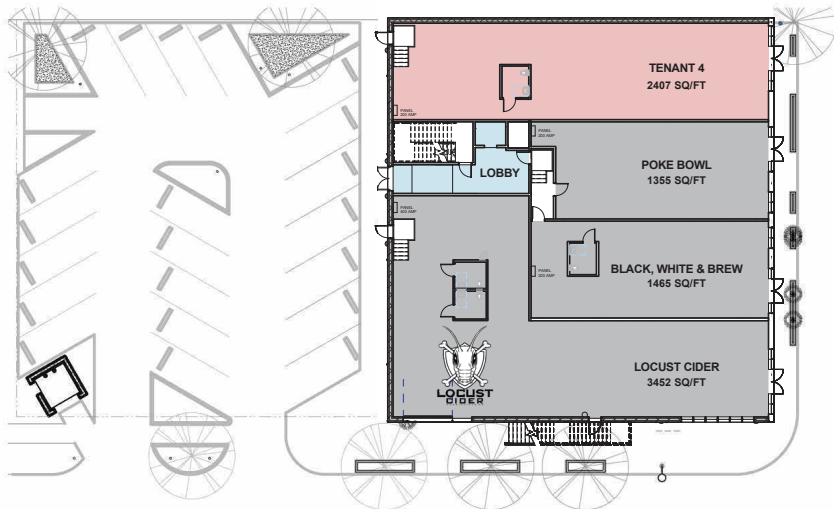
**CONTACT WILL NORTHERN**

817.454.8506 | will@northernrealtygroup.com

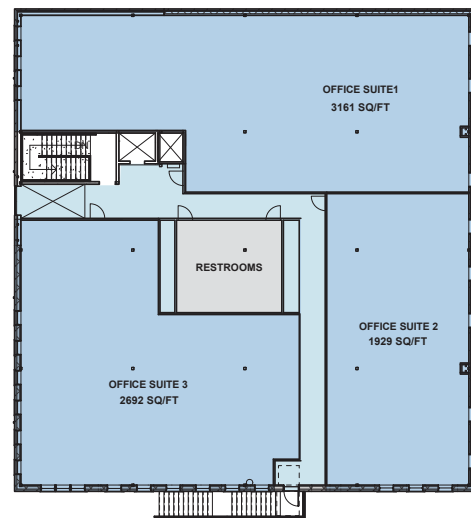




**PROPOSED FLOORPLANS**



**GROUND FLOOR RETAIL**

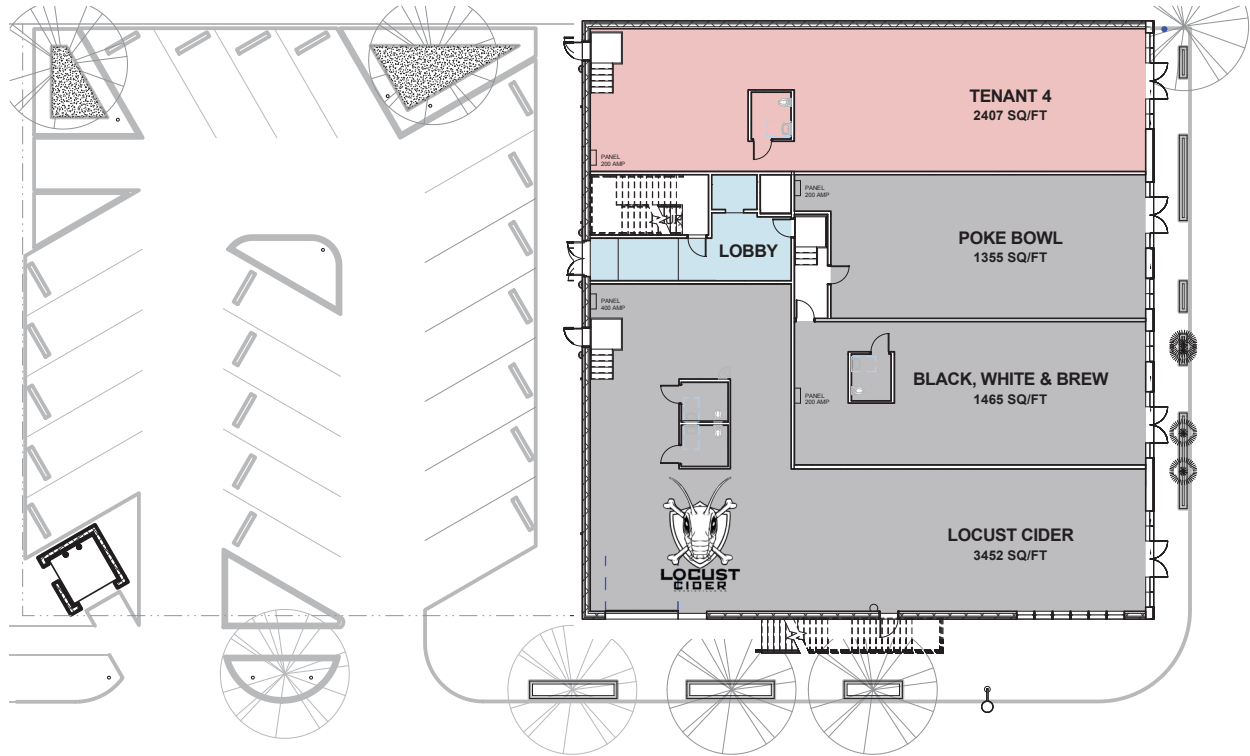


**2ND FLOOR EXECUTIVE SUITES**



**RETAIL GROUND FLOOR**

5,400 SF DIVISIBLE

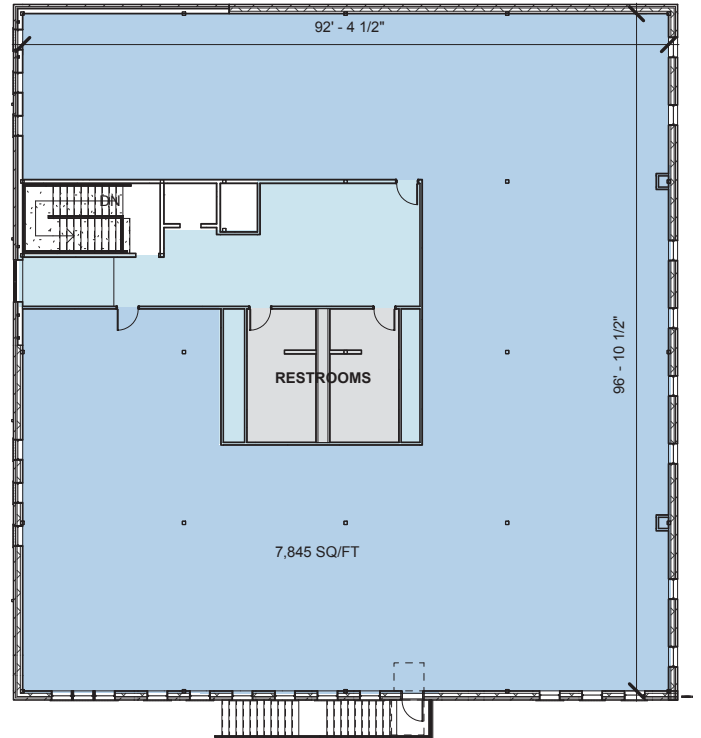
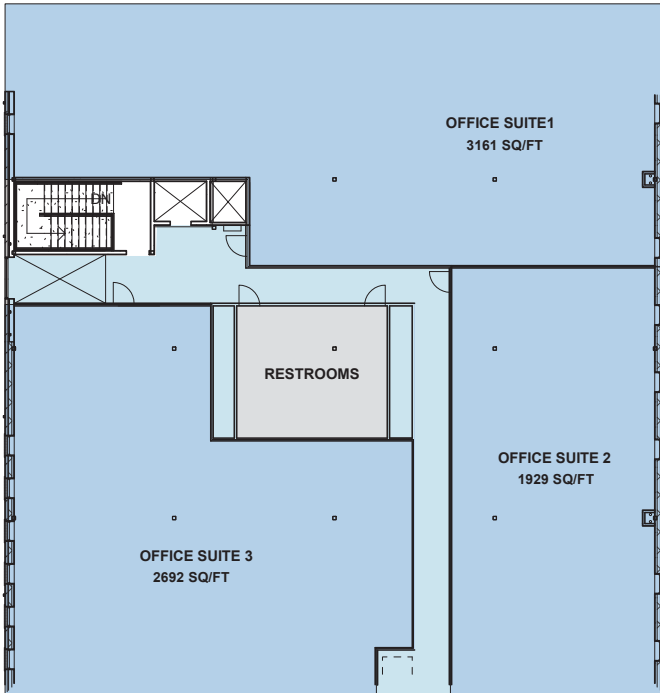


**RETAIL INSPIRATION**

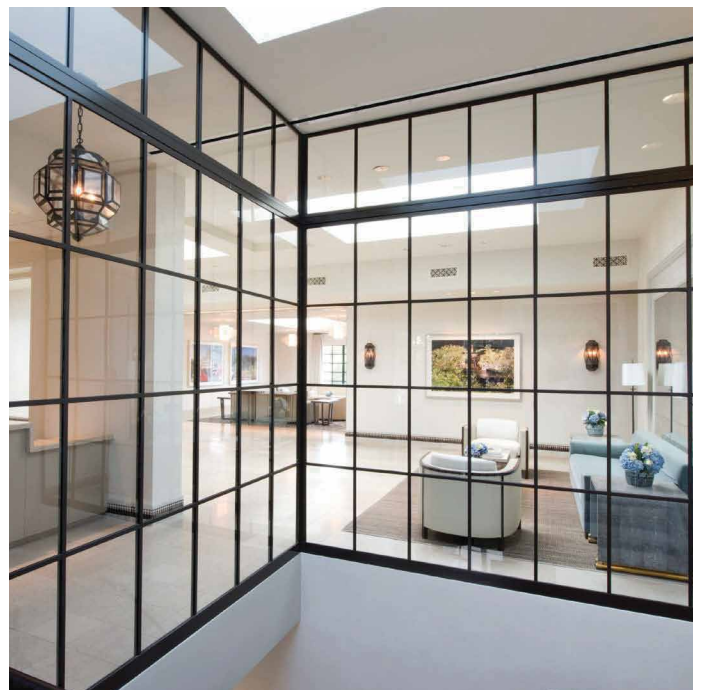


**CREATIVE OFFICE SECOND FLOOR**

9,600 SF DIVISIBLE

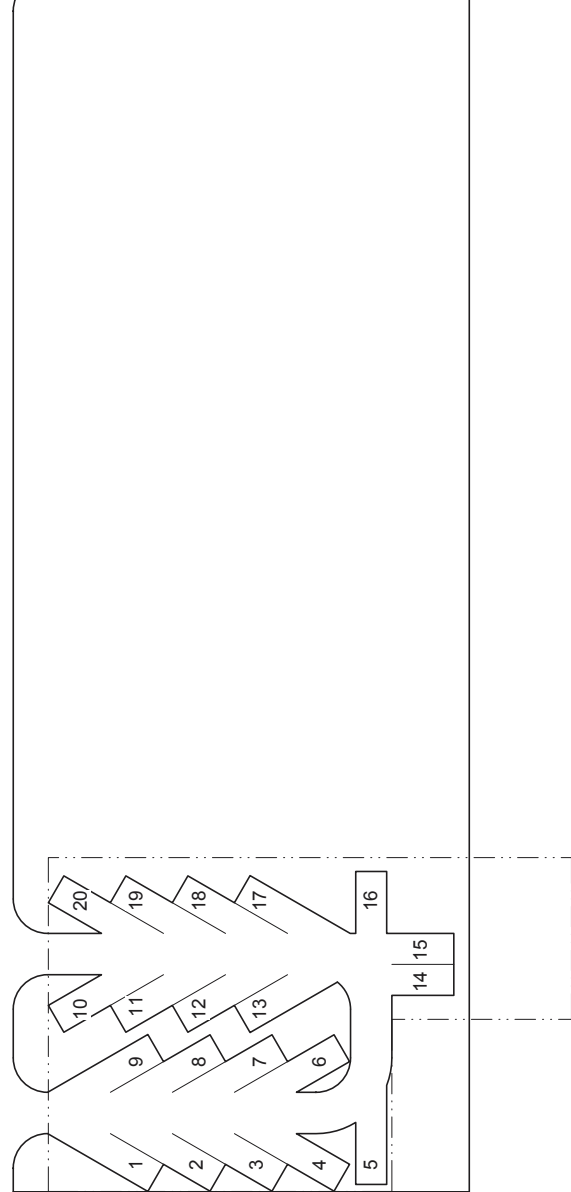
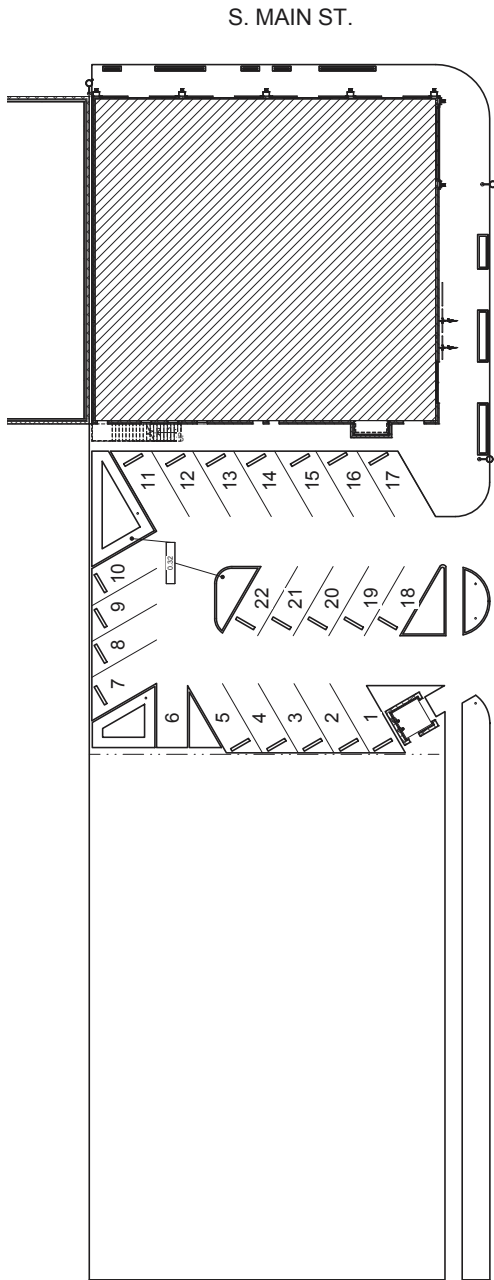


**CREATIVE OFFICE INSPIRATION**

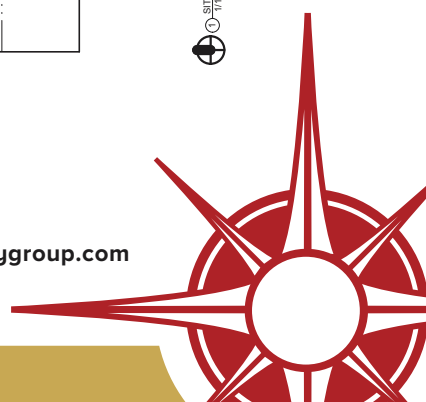


**710 SOUTH MAIN STREET**  
 FORT WORTH, TEXAS 76104

**SITE PLAN**



 SITE PLAN  
 1/16 P-110



**710 SOUTH MAIN STREET**  
**FORT WORTH, TEXAS 76104**

Multifamily development has taken off with high demand for more livable space in the Near Southside. There will be over 3,000 units on the ground by 2018. Retailers are also beginning to flock to the area as more and more people move to the growing area.

**MULTIFAMILY DEVELOPMENT**

**OVER 3,000 UNITS**

**SERIOUS DENSITY TO THE NSS**

