

ROBBINS PROPERTIES

Leasing Opportunity –3,600 SF Available
4419—4421 Dixie Hwy, Louisville, KY



ROBBINS PROPERTIES

Leasing • Property Management • Investment Sales

Mark Robbins, Principal

Phone: 615.301.6571

Mobile: 615.473.7731

www.robbs-properties.com

mrobbs@robbs-properties.com

	<u>1 MILE</u>	<u>3 MILE</u>	<u>5 MILE</u>
POPULATION	9,788	94,791	202,202
AVG. HOUSEHOLD INCOME	\$55,834	\$52,438	\$50,798
TRAFFIC COUNT 58,000 + CARS PER DAY			
38 PARKING SPACES OR 5.64 PARKING SPACES PER 1,000 SF			



ROBBINS PROPERTIES

Leasing Opportunity
4419-4421 Dixie Hwy, Louisville, KY



**3,600 SF
AVAILABLE**

BUILDING IS ADJACENT TO VERIZON WIRELESS

GREAT LOCATION JUST SOUTH OF WATTERSON EXPRESSWAY

HIGH TRAFFIC CENTER

SIGNALIZED ENTRANCE

POPULATION GROWTH

STAND ALONE BUILDING



ROBBINS PROPERTIES

Leasing • Property Management • Investment Sales

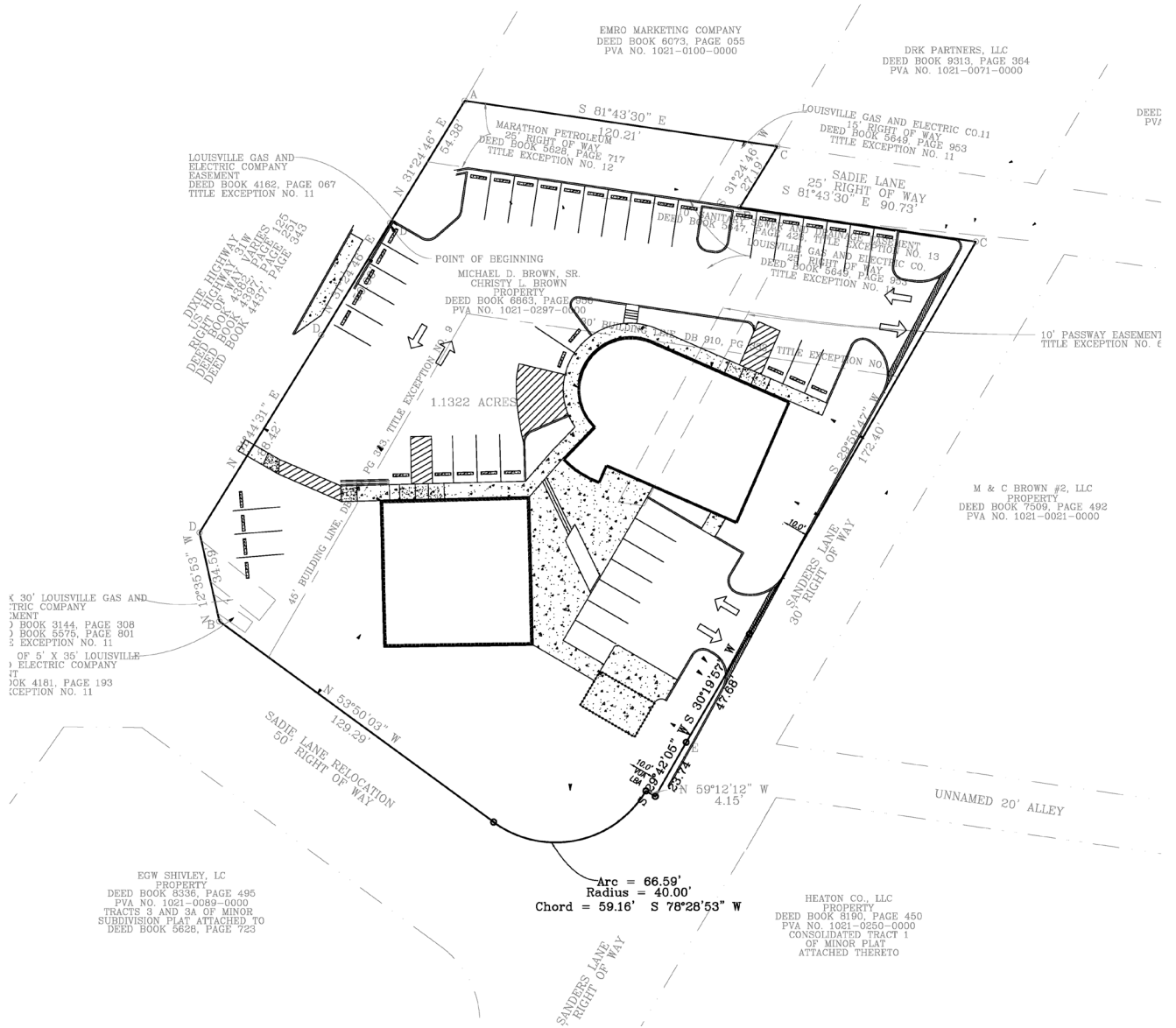
Mark Robbins, Principal

Phone: 615.301.6571

Mobile: 615.473.7731

www.robbsins-properties.com

mrobbsins@robbsins-properties.com



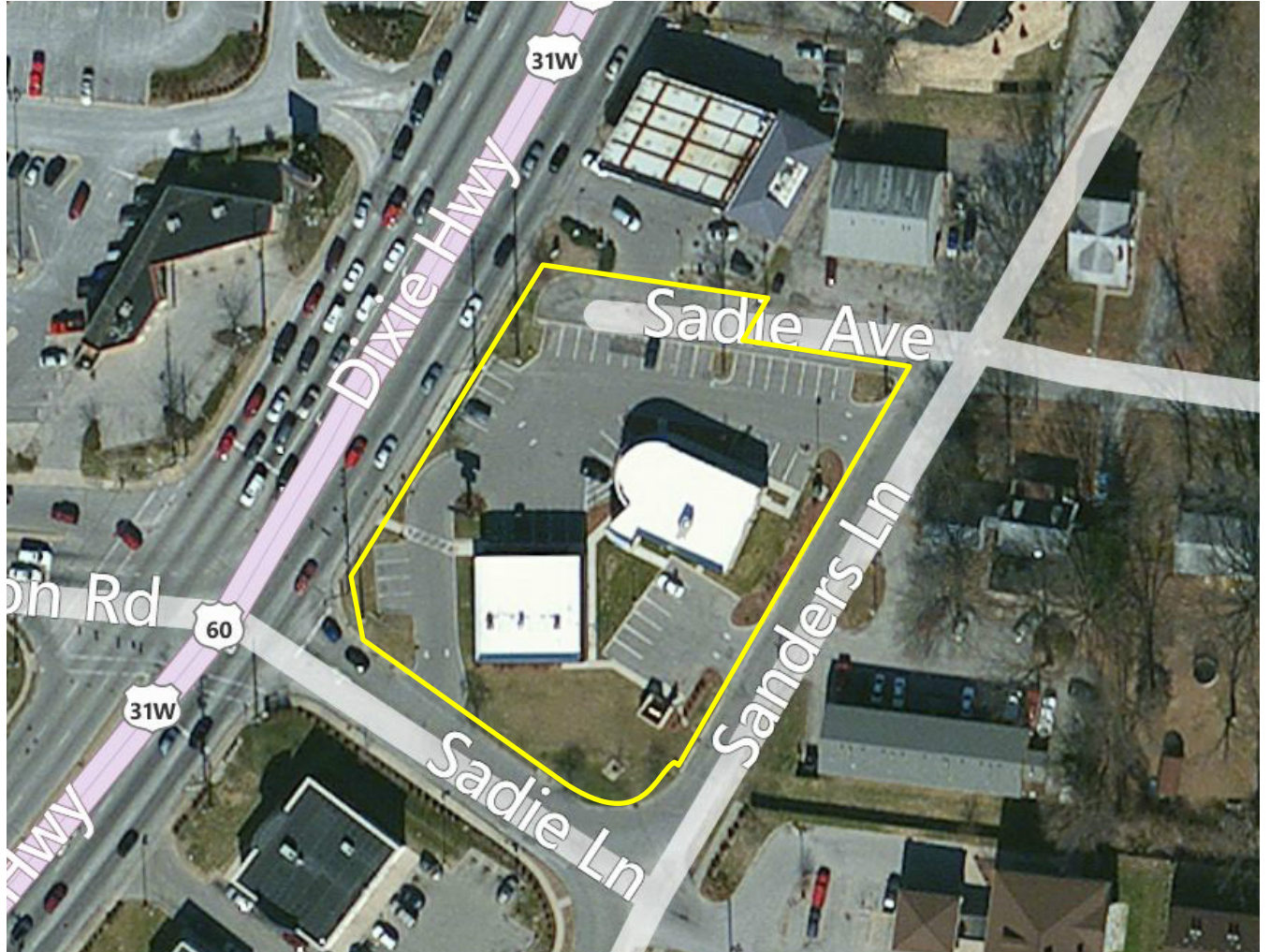
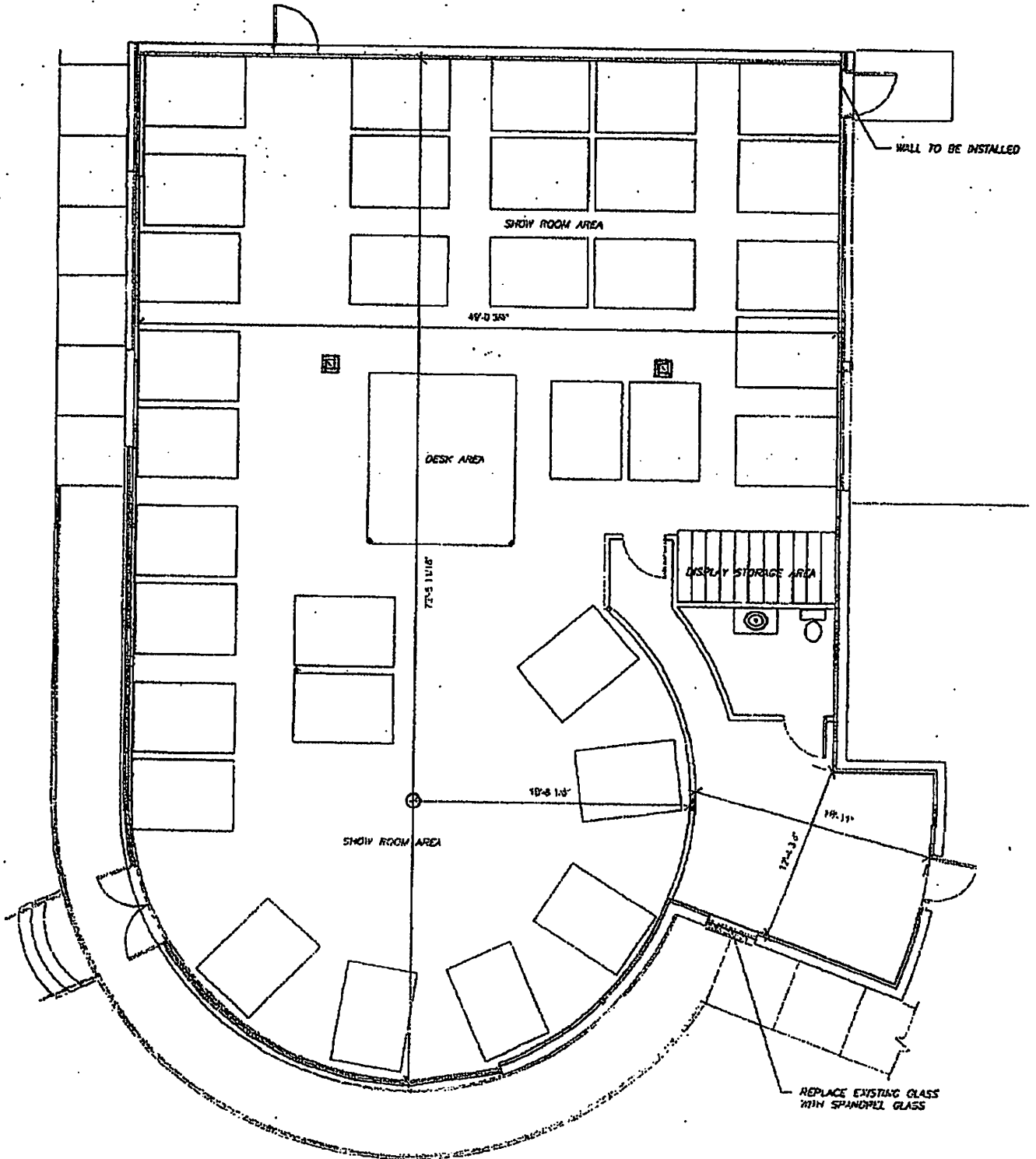


EXHIBIT "C-2"

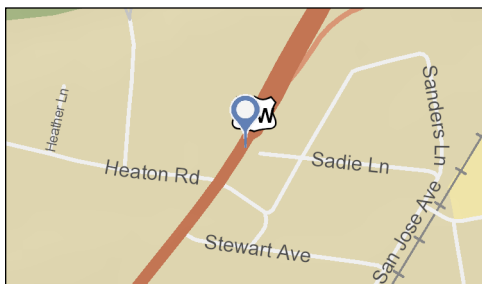
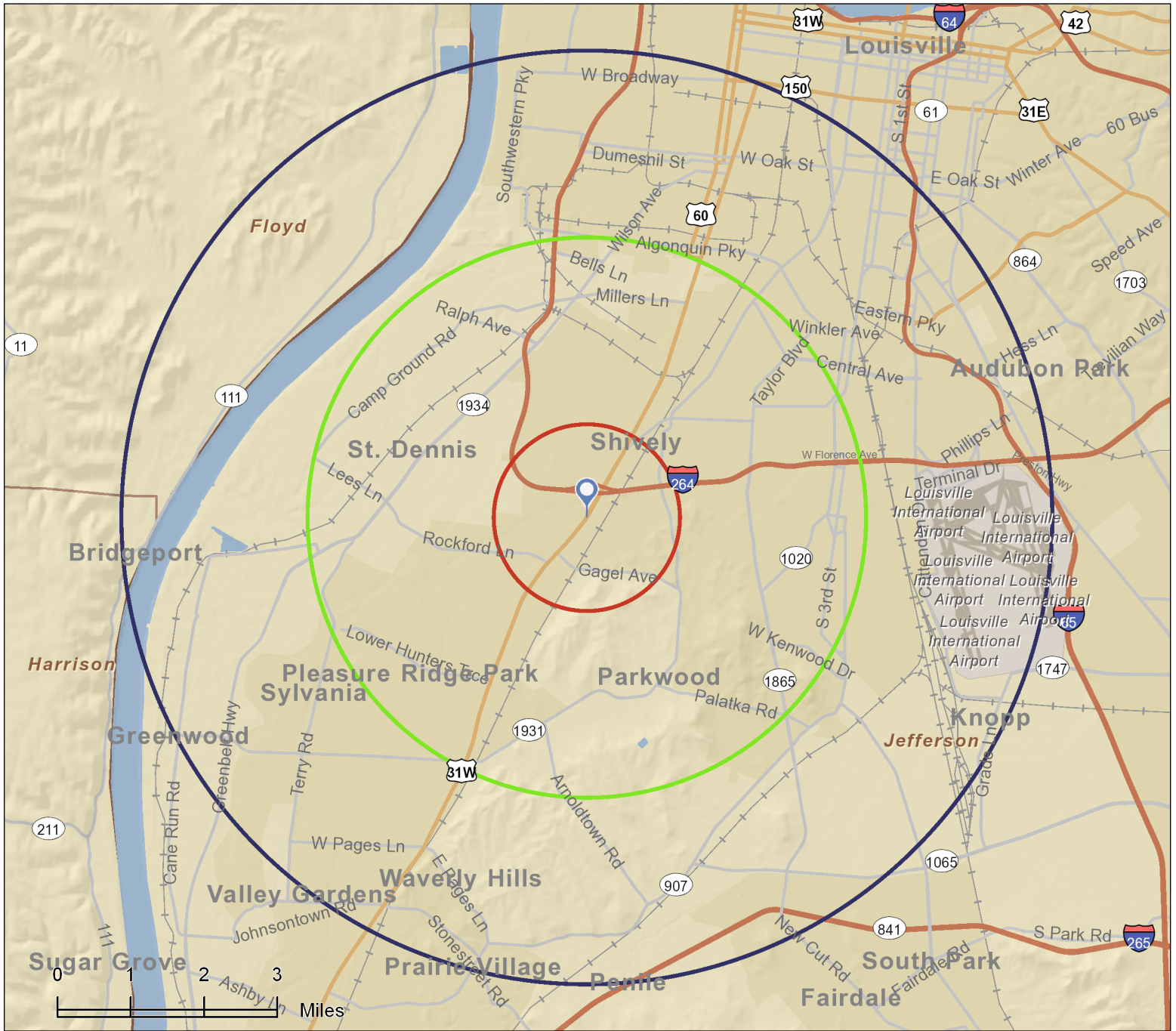




Site Map

4419 Dixie Hwy, Louisville, KY, 40216
Ring: 1, 3, 5 Miles

Prepared by Mark Robbins
Latitude: 38.181342
Longitude: -85.815696





Executive Summary

Prepared by Mark Robbins

4419 Dixie Hwy, Louisville, ...

Latitude: 38.181342

Longitude: -85.815696

Ring: 1, 3, 5 Miles

	1 mile radius	3 miles radius	5 miles radius
2010 Population			
Total Population	9,768	94,791	202,202
Male Population	46.5%	47.8%	47.9%
Female Population	53.5%	52.2%	52.1%
Median Age	44.9	39.1	37.5
2010 Income			
Median HH Income	\$48,910	\$43,568	\$41,415
Per Capita Income	\$25,029	\$22,458	\$21,557
Average HH Income	\$55,834	\$52,438	\$50,798
2010 Households			
Total Households	4,367	40,482	85,149
Average Household Size	2.20	2.32	2.34
2010 Housing			
Owner Occupied Housing Units	63.8%	55.8%	52.1%
Renter Occupied Housing Units	28.6%	34.8%	37.1%
Vacant Housing Units	7.6%	9.4%	10.8%
Population			
1990 Population	10,204	97,781	210,143
2000 Population	10,025	96,972	204,142
2010 Population	9,768	94,791	202,202
2015 Population	9,771	94,931	203,376
1990-2000 Annual Rate	-0.18%	-0.08%	-0.29%
2000-2010 Annual Rate	-0.25%	-0.22%	-0.09%
2010-2015 Annual Rate	0.01%	0.03%	0.12%

In the identified market area, the current year population is 202,202. In 2000, the Census count in the market area was 204,142. The rate of change since 2000 was -0.09 percent annually. The five-year projection for the population in the market area is 203,376, representing a change of 0.12 percent annually from 2010 to 2015. Currently, the population is 47.9 percent male and 52.1 percent female.

Households			
1990 Households	4,341	39,714	83,576
2000 Households	4,391	40,744	84,640
2010 Households	4,367	40,482	85,149
2015 Households	4,395	40,738	86,059
1990-2000 Annual Rate	0.11%	0.26%	0.13%
2000-2010 Annual Rate	-0.05%	-0.06%	0.06%
2010-2015 Annual Rate	0.13%	0.13%	0.21%

The household count in this market area has changed from 84,640 in 2000 to 85,149 in the current year, a change of 0.06 percent annually. The five-year projection of households is 86,059, a change of 0.21 percent annually from the current year total. Average household size is currently 2.34, compared to 2.38 in the year 2000. The number of families in the current year is 50,579 in the market area.

Housing

Currently, 52.1 percent of the 95,458 housing units in the market area are owner occupied; 37.1 percent, renter occupied; and 10.8 percent are vacant. In 2000, there were 90,753 housing units - 56.1 percent owner occupied, 37.1 percent renter occupied and 6.8 percent vacant. The rate of change in housing units since 2000 is 0.49 percent. Median home value in the market area is \$97,891, compared to a median home value of \$157,913 for the U.S. In five years, median home value is projected to change by 2.7 percent annually to \$111,839. From 2000 to the current year, median home value changed by 2.03 percent annually.

Source: U.S. Bureau of the Census, 2000 Census of Population and Housing. Esri forecasts for 2010 and 2015. Esri converted 1990 Census data into 2000 geography.



Executive Summary

Prepared by Mark Robbins

4419 Dixie Hwy, Louisville, ...

Latitude: 38.181342

Longitude: -85.815696

Ring: 1, 3, 5 Miles

	1 mile radius	3 miles radius	5 miles radius
Median Household Income			
1990 Median HH Income	\$26,644	\$22,885	\$21,029
2000 Median HH Income	\$35,425	\$32,029	\$30,513
2010 Median HH Income	\$48,910	\$43,568	\$41,415
2015 Median HH Income	\$54,589	\$50,067	\$46,011
1990-2000 Annual Rate	2.89%	3.42%	3.79%
2000-2010 Annual Rate	3.2%	3.05%	3.03%
2010-2015 Annual Rate	2.22%	2.82%	2.13%
Per Capita Income			
1990 Per Capita Income	\$13,046	\$10,983	\$10,282
2000 Per Capita Income	\$18,807	\$16,824	\$16,226
2010 Per Capita Income	\$25,029	\$22,458	\$21,557
2015 Per Capita Income	\$27,546	\$24,615	\$23,646
1990-2000 Annual Rate	3.73%	4.36%	4.67%
2000-2010 Annual Rate	2.83%	2.86%	2.81%
2010-2015 Annual Rate	1.93%	1.85%	1.87%
Average Household Income			
1990 Average Household Income	\$30,516	\$26,950	\$25,633
2000 Average Household Income	\$43,072	\$39,785	\$38,735
2010 Average HH Income	\$55,834	\$52,438	\$50,798
2015 Average HH Income	\$61,041	\$57,192	\$55,440
1990-2000 Annual Rate	3.51%	3.97%	4.22%
2000-2010 Annual Rate	2.56%	2.73%	2.68%
2010-2015 Annual Rate	1.8%	1.75%	1.76%

Households by Income

Current median household income is \$41,415 in the market area, compared to \$54,442 for all U.S. households. Median household income is projected to be \$46,011 in five years. In 2000, median household income was \$30,513, compared to \$21,029 in 1990.

Current average household income is \$50,798 in this market area, compared to \$70,173 for all U.S. households. Average household income is projected to be \$55,440 in five years. In 2000, average household income was \$38,735, compared to \$25,633 in 1990.

Current per capita income is \$21,557 in the market area, compared to the U.S. per capita income of \$26,739. The per capita income is projected to be \$23,646 in five years. In 2000, the per capita income was \$16,226, compared to \$10,282 in 1990.

Population by Employment

Total Businesses	330	2,401	5,769
Total Employees	3,046	26,717	85,038

Currently, 85.8 percent of the civilian labor force in the identified market area is employed and 14.2 percent are unemployed. In comparison, 89.2 percent of the U.S. civilian labor force is employed, and 10.8 percent are unemployed. In five years the rate of employment in the market area will be 88.4 percent of the civilian labor force, and unemployment will be 11.6 percent. The percentage of the U.S. civilian labor force that will be employed in five years is 91.2 percent, and 8.8 percent will be unemployed. In 2000, 61.0 percent of the population aged 16 years or older in the market area participated in the labor force, and 0.1 percent were in the Armed Forces.

In the current year, the occupational distribution of the employed population is:

- 52.8 percent in white collar jobs (compared to 61.6 percent of U.S. employment)
- 20.1 percent in service jobs (compared to 17.3 percent of U.S. employment)
- 27.0 percent in blue collar jobs (compared to 21.1 percent of U.S. employment)

In 2000, 76.1 percent of the market area population drove alone to work, and 1.4 percent worked at home. The average travel time to work in 2000 was 22.3 minutes in the market area, compared to the U.S. average of 25.5 minutes.

Population by Education

In 2010, the educational attainment of the population aged 25 years or older in the market area was distributed as follows:

- 19.6 percent had not earned a high school diploma (14.8 percent in the U.S.)
- 39.1 percent were high school graduates only (29.6 percent in the U.S.)
- 6.2 percent had completed an Associate degree (7.7 percent in the U.S.)
- 7.7 percent had a Bachelor's degree (17.7 percent in the U.S.)
- 5.0 percent had earned a Master's/Professional/Doctorate Degree (10.4 percent in the U.S.)

Source: U.S. Bureau of the Census, 2000 Census of Population and Housing. Esri forecasts for 2010 and 2015. Esri converted 1990 Census data into 2000 geography.



4419 Dixie Hwy, Louisville, ...




Market Profile

Prepared by Mark Robbins

Latitude: 38.181342

Longitude: -85.815696

Ring: 1, 3, 5 Miles

	1 mile radius	3 miles radius	5 miles radius
 2000 Total Population	10,025	96,972	204,142
2000 Group Quarters	148	731	2,743
2010 Total Population	9,768	94,791	202,202
2015 Total Population	9,771	94,931	203,376
2010 - 2015 Annual Rate	0.01%	0.03%	0.12%
 2000 Households	4,391	40,744	84,640
2000 Average Household Size	2.25	2.36	2.38
2010 Households	4,367	40,482	85,149
2010 Average Household Size	2.2	2.32	2.34
2015 Households	4,395	40,738	86,059
2015 Average Household Size	2.19	2.31	2.33
2010 - 2015 Annual Rate	0.13%	0.13%	0.21%
2000 Families	2,823	26,172	53,118
2000 Average Family Size	2.81	2.94	2.99
2010 Families	2,645	24,538	50,579
2010 Average Family Size	2.83	2.96	3.01
2015 Families	2,607	24,224	50,207
2015 Average Family Size	2.84	2.97	3.01
2010 - 2015 Annual Rate	-0.29%	-0.26%	-0.15%
 2000 Housing Units	4,600	43,047	90,753
Owner Occupied Housing Units	68.4%	60.0%	56.1%
Renter Occupied Housing Units	27.5%	34.6%	37.1%
Vacant Housing Units	4.1%	5.4%	6.8%
2010 Housing Units	4,725	44,683	95,459
Owner Occupied Housing Units	63.8%	55.8%	52.1%
Renter Occupied Housing Units	28.6%	34.8%	37.1%
Vacant Housing Units	7.6%	9.4%	10.8%
2015 Housing Units	4,799	45,683	98,128
Owner Occupied Housing Units	62.5%	54.6%	51.0%
Renter Occupied Housing Units	29.0%	34.5%	36.7%
Vacant Housing Units	8.4%	10.8%	12.3%
Median Household Income			
2000	\$35,425	\$32,029	\$30,513
2010	\$48,910	\$43,568	\$41,415
2015	\$54,589	\$50,067	\$46,011
Median Home Value			
2000	\$88,891	\$81,687	\$79,672
2010	\$111,511	\$100,653	\$97,891
2015	\$126,442	\$114,919	\$111,839
Per Capita Income			
2000	\$18,807	\$16,824	\$16,226
2010	\$25,029	\$22,458	\$21,557
2015	\$27,546	\$24,615	\$23,646
Median Age			
2000	41.8	37.1	35.8
2010	44.9	39.1	37.5
2015	45.4	39.6	38.0

Data Note: Household population includes persons not residing in group quarters. Average Household Size is the household population divided by total households. Persons in families include the householder and persons related to the householder by birth, marriage, or adoption. Per Capita Income represents the income received by all persons aged 15 years and over divided by total population. Detail may not sum to totals due to rounding.

Source: U.S. Bureau of the Census, 2000 Census of Population and Housing. Esri forecasts for 2010 and 2015.



4419 Dixie Hwy, Louisville, ...

Latitude: 38.181342
Longitude: -85.815696

Ring: 1, 3, 5 Miles

	1 mile radius	3 miles radius	5 miles radius
2000 Households by Income			
Household Income Base	4,336	40,752	84,809
< \$15,000	18.6%	21.7%	24.4%
\$15,000 - \$24,999	15.6%	17.1%	17.1%
\$25,000 - \$34,999	14.9%	15.3%	14.6%
\$35,000 - \$49,999	18.7%	18.5%	17.5%
\$50,000 - \$74,999	20.3%	16.5%	15.7%
\$75,000 - \$99,999	8.1%	6.6%	6.5%
\$100,000 - \$149,999	2.9%	3.1%	2.9%
\$150,000 - \$199,999	0.3%	0.7%	0.7%
\$200,000+	0.6%	0.5%	0.6%
Average Household Income	\$43,072	\$39,785	\$38,735
2010 Households by Income			
Household Income Base	4,367	40,483	85,149
< \$15,000	11.8%	14.8%	17.5%
\$15,000 - \$24,999	10.8%	11.8%	12.2%
\$25,000 - \$34,999	12.4%	13.0%	12.7%
\$35,000 - \$49,999	15.9%	15.7%	15.0%
\$50,000 - \$74,999	22.3%	22.1%	21.0%
\$75,000 - \$99,999	16.6%	13.5%	12.6%
\$100,000 - \$149,999	8.5%	7.2%	7.2%
\$150,000 - \$199,999	0.8%	0.9%	0.8%
\$200,000+	0.8%	0.9%	1.0%
Average Household Income	\$55,834	\$52,438	\$50,798
2015 Households by Income			
Household Income Base	4,395	40,737	86,058
< \$15,000	10.5%	13.4%	16.0%
\$15,000 - \$24,999	9.3%	10.3%	10.8%
\$25,000 - \$34,999	11.4%	12.1%	11.8%
\$35,000 - \$49,999	13.8%	14.1%	13.5%
\$50,000 - \$74,999	20.9%	21.1%	20.2%
\$75,000 - \$99,999	21.0%	17.6%	16.3%
\$100,000 - \$149,999	11.1%	9.3%	9.3%
\$150,000 - \$199,999	1.0%	1.1%	1.0%
\$200,000+	0.9%	1.0%	1.1%
Average Household Income	\$61,041	\$57,192	\$55,440
2000 Owner Occupied HUs by Value			
Total	3,139	25,875	50,857
<\$50,000	1.7%	10.8%	16.4%
\$50,000 - 99,999	69.7%	65.9%	60.4%
\$100,000 - 149,999	25.9%	18.3%	17.0%
\$150,000 - 199,999	1.9%	3.0%	3.6%
\$200,000 - \$299,999	0.8%	1.4%	1.9%
\$300,000 - 499,999	0.0%	0.5%	0.5%
\$500,000 - 999,999	0.0%	0.1%	0.1%
\$1,000,000+	0.0%	0.0%	0.1%
Average Home Value	\$93,351	\$87,657	\$86,227
2000 Specified Renter Occupied HUs by Contract Rent			
Total	1,242	14,863	33,732
With Cash Rent	97.1%	95.8%	96.2%
No Cash Rent	2.9%	4.2%	3.8%
Median Rent	\$387	\$372	\$375
Average Rent	\$409	\$366	\$370

Data Note: Income represents the preceding year, expressed in current dollars. Household income includes wage and salary earnings, interest, dividends, net rents, pensions, SSI and welfare payments, child support and alimony. Specified Renter Occupied Housing Units exclude houses on 10+ acres. Average Rent excludes units paying no cash rent.


Source: U.S. Bureau of the Census, 2000 Census of Population and Housing. Esri forecasts for 2010 and 2015.



4419 Dixie Hwy, Louisville, ...

Latitude: 38.181342
Longitude: -85.815696

Ring: 1, 3, 5 Miles

	1 mile radius	3 miles radius	5 miles radius
2000 Population by Age			
 Total	10,029	96,974	204,143
Age 0 - 4	5.4%	6.8%	6.9%
Age 5 - 9	6.1%	7.1%	7.1%
Age 10 - 14	5.3%	6.7%	7.0%
Age 15 - 19	5.6%	6.7%	7.1%
Age 20 - 24	5.3%	6.2%	7.0%
Age 25 - 34	11.9%	13.3%	13.6%
Age 35 - 44	15.8%	16.1%	16.0%
Age 45 - 54	13.6%	13.6%	13.1%
Age 55 - 64	9.3%	8.6%	8.3%
Age 65 - 74	11.5%	8.0%	7.5%
Age 75 - 84	8.0%	5.5%	4.9%
Age 85+	2.1%	1.5%	1.4%
Age 18+	79.9%	75.4%	75.0%
2010 Population by Age			
Total	9,768	94,789	202,202
Age 0 - 4	5.2%	6.7%	6.8%
Age 5 - 9	5.3%	6.5%	6.6%
Age 10 - 14	5.3%	6.1%	6.3%
Age 15 - 19	5.8%	6.4%	6.9%
Age 20 - 24	5.0%	6.2%	7.0%
Age 25 - 34	11.5%	12.9%	13.2%
Age 35 - 44	11.9%	12.7%	12.5%
Age 45 - 54	15.8%	15.3%	14.9%
Age 55 - 64	13.3%	12.4%	11.8%
Age 65 - 74	8.6%	7.1%	6.8%
Age 75 - 84	8.5%	5.4%	4.9%
Age 85+	3.7%	2.3%	2.1%
Age 18+	80.6%	76.8%	76.4%
2015 Population by Age			
Total	9,772	94,933	203,376
Age 0 - 4	5.1%	6.6%	6.6%
Age 5 - 9	5.1%	6.4%	6.5%
Age 10 - 14	5.5%	6.3%	6.5%
Age 15 - 19	5.2%	5.9%	6.5%
Age 20 - 24	5.6%	6.2%	7.0%
Age 25 - 34	11.3%	12.9%	13.1%
Age 35 - 44	11.9%	12.4%	12.4%
Age 45 - 54	12.9%	13.2%	12.8%
Age 55 - 64	15.6%	14.0%	13.4%
Age 65 - 74	10.7%	8.9%	8.4%
Age 75 - 84	7.2%	4.9%	4.6%
Age 85+	4.0%	2.4%	2.2%
Age 18+	81.2%	77.2%	76.7%
2000 Population by Sex			
Males	46.5%	47.3%	47.6%
Females	53.5%	52.7%	52.4%
2010 Population by Sex			
Males	46.5%	47.8%	47.9%
Females	53.5%	52.2%	52.1%
2015 Population by Sex			
Males	46.6%	48.0%	48.1%
Females	53.4%	52.0%	51.9%



Source: U.S. Bureau of the Census, 2000 Census of Population and Housing. Esri forecasts for 2010 and 2015.



4419 Dixie Hwy, Louisville, ...

Latitude: 38.181342
Longitude: -85.815696

Ring: 1, 3, 5 Miles

	1 mile radius	3 miles radius	5 miles radius
2000 Population by Race/Ethnicity			
 Total	10,026	96,973	204,142
White Alone	86.5%	74.9%	66.8%
Black Alone	11.0%	21.0%	29.2%
American Indian Alone	0.2%	0.2%	0.2%
Asian or Pacific Islander Alone	1.0%	1.6%	1.4%
Some Other Race Alone	0.4%	0.7%	0.7%
Two or More Races	0.8%	1.5%	1.6%
Hispanic Origin	1.0%	1.9%	1.8%
Diversity Index	25.4	41.7	48.7
2010 Population by Race/Ethnicity			
Total	9,768	94,790	202,202
White Alone	82.0%	70.4%	63.0%
Black Alone	14.1%	23.7%	31.4%
American Indian Alone	0.4%	0.4%	0.3%
Asian or Pacific Islander Alone	1.5%	2.2%	1.9%
Some Other Race Alone	0.8%	1.2%	1.1%
Two or More Races	1.2%	2.1%	2.1%
Hispanic Origin	2.1%	3.7%	3.6%
Diversity Index	33.6	48.7	53.8
2015 Population by Race/Ethnicity			
Total	9,769	94,931	203,376
White Alone	79.9%	68.5%	61.4%
Black Alone	15.6%	24.8%	32.3%
American Indian Alone	0.4%	0.4%	0.4%
Asian or Pacific Islander Alone	1.8%	2.5%	2.2%
Some Other Race Alone	0.9%	1.4%	1.3%
Two or More Races	1.4%	2.4%	2.4%
Hispanic Origin	2.7%	4.5%	4.3%
Diversity Index	37.2	51.4	55.7
2000 Population 3+ by School Enrollment			
 Total	9,749	93,129	195,882
Enrolled in Nursery/Preschool	1.7%	1.8%	1.7%
Enrolled in Kindergarten	1.1%	1.4%	1.4%
Enrolled in Grade 1-8	9.5%	11.8%	12.3%
Enrolled in Grade 9-12	4.6%	5.4%	5.7%
Enrolled in College	3.6%	3.5%	4.7%
Enrolled in Grad/Prof School	0.5%	0.6%	0.8%
Not Enrolled in School	79.1%	75.4%	73.3%
2010 Population 25+ by Educational Attainment			
Total	7,163	64,533	134,130
Less than 9th Grade	5.9%	6.3%	6.0%
9th - 12th Grade, No Diploma	11.1%	13.2%	13.6%
High School Graduate	41.1%	40.4%	39.1%
Some College, No Degree	25.3%	22.5%	22.3%
Associate Degree	6.1%	5.9%	6.2%
Bachelor's Degree	7.1%	7.3%	7.7%
Graduate/Professional Degree	3.5%	4.3%	5.0%

Data Note: Persons of Hispanic Origin may be of any race. The Diversity Index measures the probability that two people from the same area will be from different race/ethnic groups.

Source: U.S. Bureau of the Census, 2000 Census of Population and Housing. Esri forecasts for 2010 and 2015.




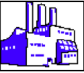

4419 Dixie Hwy, Louisville, ...

Market Profile

Prepared by Mark Robbins

Latitude: 38.181342
Longitude: -85.815696

Ring: 1, 3, 5 Miles

	1 mile radius	3 miles radius	5 miles radius
2010 Population 15+ by Marital Status			
 Total	8,214	76,430	162,285
Never Married	23.6%	29.2%	32.9%
Married	51.6%	45.1%	42.1%
Widowed	10.3%	8.3%	8.2%
Divorced	14.4%	17.4%	16.8%
2000 Population 16+ by Employment Status			
 Total	8,279	75,675	158,772
In Labor Force	59.1%	61.5%	61.0%
Civilian Employed	56.4%	57.6%	56.8%
Civilian Unemployed	2.5%	3.8%	4.2%
In Armed Forces	0.1%	0.1%	0.1%
Not in Labor Force	40.9%	38.5%	39.0%
2010 Civilian Population 16+ in Labor Force			
Civilian Employed	88.9%	86.7%	85.8%
Civilian Unemployed	11.1%	13.3%	14.2%
2015 Civilian Population 16+ in Labor Force			
Civilian Employed	91.0%	89.1%	88.4%
Civilian Unemployed	9.0%	10.9%	11.6%
2000 Females 16+ by Employment Status and Age of Children			
Total	4,507	40,717	84,993
Own Children < 6 Only	6.5%	7.7%	7.3%
Employed/in Armed Forces	4.7%	5.1%	4.7%
Unemployed	0.5%	0.8%	0.6%
Not in Labor Force	1.3%	1.9%	1.9%
Own Children < 6 and 6-17 Only	3.8%	5.5%	5.4%
Employed/in Armed Forces	2.7%	3.6%	3.2%
Unemployed	0.1%	0.3%	0.3%
Not in Labor Force	1.1%	1.7%	1.8%
Own Children 6-17 Only	13.5%	17.1%	16.9%
Employed/in Armed Forces	10.4%	12.5%	11.9%
Unemployed	0.3%	0.5%	0.5%
Not in Labor Force	2.8%	4.1%	4.5%
No Own Children < 18	76.2%	69.7%	70.4%
Employed/in Armed Forces	34.3%	32.1%	32.7%
Unemployed	1.4%	2.2%	2.3%
Not in Labor Force	40.5%	35.4%	35.3%
2010 Employed Population 16+ by Industry			
 Total	4,082	38,868	81,219
Agriculture/Mining	0.2%	0.4%	0.3%
Construction	6.9%	6.7%	6.2%
Manufacturing	9.9%	10.4%	10.1%
Wholesale Trade	4.9%	4.1%	3.9%
Retail Trade	11.0%	11.2%	11.0%
Transportation/Utilities	8.4%	8.6%	8.4%
Information	1.3%	1.5%	1.6%
Finance/Insurance/Real Estate	13.4%	8.6%	8.0%
Services	40.4%	44.2%	45.9%
Public Administration	3.5%	4.3%	4.5%

Source: U.S. Bureau of the Census, 2000 Census of Population and Housing. Esri forecasts for 2010 and 2015.



4419 Dixie Hwy, Louisville, ...


Market Profile

Prepared by Mark Robbins

Latitude: 38.181342

Longitude: -85.815696

Ring: 1, 3, 5 Miles

	1 mile radius	3 miles radius	5 miles radius
2010 Employed Population 16+ by Occupation			
Total	4,083	38,868	81,222
White Collar	57.7%	53.0%	52.8%
Management/Business/Financial	10.8%	9.4%	9.6%
Professional	14.5%	15.2%	15.7%
Sales	10.7%	9.9%	9.3%
Administrative Support	21.7%	18.4%	18.2%
Services	16.4%	19.3%	20.1%
Blue Collar	25.9%	27.7%	27.0%
Farming/Forestry/Fishing	0.3%	0.2%	0.2%
Construction/Extraction	6.6%	6.4%	5.9%
Installation/Maintenance/Repair	3.6%	4.0%	3.9%
Production	7.4%	8.1%	8.0%
Transportation/Material Moving	8.0%	9.0%	9.0%
2000 Workers 16+ by Means of Transportation to Work			
 Total	4,573	42,587	87,861
Drove Alone - Car, Truck, or Van	81.6%	79.2%	76.1%
Carpooled - Car, Truck, or Van	13.6%	13.5%	13.8%
Public Transportation	1.2%	3.2%	5.0%
Walked	1.8%	2.0%	2.7%
Other Means	0.9%	0.8%	1.0%
Worked at Home	0.9%	1.3%	1.4%
2000 Workers 16+ by Travel Time to Work			
Total	4,571	42,589	87,861
Did Not Work at Home	99.1%	98.7%	98.6%
Less than 5 minutes	1.3%	2.1%	2.1%
5 to 9 minutes	9.1%	8.9%	9.0%
10 to 19 minutes	35.9%	35.8%	35.2%
20 to 24 minutes	26.1%	21.2%	19.3%
25 to 34 minutes	18.2%	20.8%	22.1%
35 to 44 minutes	2.9%	3.3%	3.9%
45 to 59 minutes	2.5%	3.0%	3.4%
60 to 89 minutes	1.2%	1.7%	1.9%
90 or more minutes	1.8%	1.9%	1.8%
Worked at Home	0.9%	1.3%	1.4%
Average Travel Time to Work (in min)	21.3	22.0	22.3
2000 Households by Vehicles Available			
Total	4,384	40,752	84,635
None	7.5%	12.7%	16.0%
1	42.6%	42.1%	41.1%
2	34.9%	32.9%	31.1%
3	11.4%	9.5%	9.1%
4	2.7%	2.0%	2.0%
5+	0.8%	0.7%	0.7%
Average Number of Vehicles Available	1.6	1.5	1.4

Source: U.S. Bureau of the Census, 2000 Census of Population and Housing. Esri forecasts for 2010 and 2015.



4419 Dixie Hwy, Louisville, ...



Market Profile

Prepared by Mark Robbins

Latitude: 38.181342

Longitude: -85.815696

Ring: 1, 3, 5 Miles

	1 mile radius	3 miles radius	5 miles radius
2000 Households by Type			
 Total	4,391	40,743	84,642
Family Households	64.3%	64.2%	62.8%
Married-couple Family	47.2%	41.6%	38.5%
With Related Children	17.6%	17.8%	16.7%
Other Family (No Spouse)	17.1%	22.7%	24.3%
With Related Children	9.8%	15.3%	16.3%
Nonfamily Households	35.7%	35.8%	37.2%
Householder Living Alone	31.6%	30.7%	31.4%
Householder Not Living Alone	4.1%	5.0%	5.8%
Households with Related Children	27.4%	33.1%	33.0%
Households with Persons 65+	34.2%	26.4%	25.3%
2000 Households by Size			
Total	4,391	40,744	84,640
1 Person Household	31.6%	30.7%	31.4%
2 Person Household	35.2%	32.5%	31.5%
3 Person Household	16.5%	17.2%	17.1%
4 Person Household	11.2%	12.2%	12.1%
5 Person Household	4.1%	4.9%	5.1%
6 Person Household	1.0%	1.6%	1.7%
7+ Person Household	0.5%	0.8%	1.0%
2000 Households by Year Householder Moved In			
Total	4,384	40,752	84,636
Moved in 1999 to March 2000	14.7%	18.3%	20.2%
Moved in 1995 to 1998	23.2%	27.4%	27.4%
Moved in 1990 to 1994	14.8%	14.6%	13.8%
Moved in 1980 to 1989	13.3%	12.7%	13.0%
Moved in 1970 to 1979	12.8%	10.2%	9.9%
Moved in 1969 or Earlier	21.1%	16.7%	15.8%
Median Year Householder Moved In	1991	1994	1994
2000 Housing Units by Units in Structure			
 Total	4,555	43,057	90,772
1, Detached	77.8%	70.6%	67.0%
1, Attached	0.9%	1.2%	1.5%
2	1.8%	2.3%	3.5%
3 or 4	2.8%	7.0%	8.5%
5 to 9	3.5%	5.4%	6.0%
10 to 19	7.5%	7.1%	5.8%
20+	5.0%	5.0%	5.7%
Mobile Home	0.7%	1.4%	2.0%
Other	0.0%	0.0%	0.0%
2000 Housing Units by Year Structure Built			
Total	4,578	43,033	90,751
1999 to March 2000	0.7%	0.5%	1.3%
1995 to 1998	1.5%	2.0%	3.5%
1990 to 1994	1.3%	2.3%	2.6%
1980 to 1989	2.2%	3.9%	4.4%
1970 to 1979	16.0%	14.3%	12.6%
1969 or Earlier	78.3%	77.0%	75.6%
Median Year Structure Built	1960	1959	1958

Source: U.S. Bureau of the Census, 2000 Census of Population and Housing.



4419 Dixie Hwy, Louisville, ...

Latitude: 38.181342
Longitude: -85.815696

Ring: 1, 3, 5 Miles

	1 mile radius	3 miles radius	5 miles radius
Top 3 Tapestry Segments			
1.	Rustbelt Retirees	Rustbelt Retirees	Rustbelt Traditions
2.	Simple Living	Rustbelt Traditions	Rustbelt Retirees
3.	Cozy and Comfortable	Home Town	Home Town



2010 Consumer Spending shows the amount spent on a variety of goods and services by households that reside in the market area. Expenditures are shown by broad budget categories that are not mutually exclusive. Consumer spending does not equal business revenue.

Apparel & Services: Total \$	\$5,870,892	\$51,770,773	\$106,022,090
Average Spent	\$1,344.38	\$1,278.86	\$1,245.14
Spending Potential Index	56	53	52
Computers & Accessories: Total \$	\$752,826	\$6,666,663	\$13,646,786
Average Spent	\$172.39	\$164.68	\$160.27
Spending Potential Index	78	75	73
Education: Total \$	\$4,533,672	\$39,856,092	\$81,218,945
Average Spent	\$1,038.17	\$984.54	\$953.84
Spending Potential Index	85	81	78
Entertainment/Recreation: Total \$	\$11,429,314	\$99,553,051	\$202,142,320
Average Spent	\$2,617.20	\$2,459.19	\$2,373.98
Spending Potential Index	81	76	74
Food at Home: Total \$	\$16,068,006	\$141,062,381	\$288,175,228
Average Spent	\$3,679.42	\$3,484.57	\$3,384.36
Spending Potential Index	82	78	76
Food Away from Home: Total \$	\$11,351,393	\$100,357,308	\$205,793,430
Average Spent	\$2,599.36	\$2,479.06	\$2,416.86
Spending Potential Index	81	77	75
Health Care: Total \$	\$14,249,935	\$120,973,755	\$244,539,863
Average Spent	\$3,263.09	\$2,988.33	\$2,871.91
Spending Potential Index	88	80	77
HH Furnishings & Equipment: Total \$	\$6,232,730	\$54,160,100	\$110,090,511
Average Spent	\$1,427.23	\$1,337.88	\$1,292.92
Spending Potential Index	69	65	63
Investments: Total \$	\$6,112,317	\$49,742,068	\$97,112,535
Average Spent	\$1,399.66	\$1,228.75	\$1,140.50
Spending Potential Index	80	71	66
Retail Goods: Total \$	\$83,988,538	\$735,022,371	\$1,496,462,495
Average Spent	\$19,232.55	\$18,156.77	\$17,574.63
Spending Potential Index	77	73	71
Shelter: Total \$	\$54,648,101	\$470,826,826	\$961,659,868
Average Spent	\$12,513.88	\$11,630.52	\$11,293.85
Spending Potential Index	79	74	72
TV/Video/Audio: Total \$	\$4,440,416	\$39,225,207	\$80,353,817
Average Spent	\$1,016.81	\$968.95	\$943.68
Spending Potential Index	82	78	76
Travel: Total \$	\$6,474,234	\$54,806,691	\$110,644,464
Average Spent	\$1,482.54	\$1,353.85	\$1,299.42
Spending Potential Index	78	72	69
Vehicle Maintenance & Repairs: Total \$	\$3,305,439	\$28,985,527	\$59,227,224
Average Spent	\$756.91	\$716.01	\$695.57
Spending Potential Index	80	76	74

Data Note: The Spending Potential Index represents the amount spent in the area relative to a national average of 100.

Source: Consumer Spending data are derived from the 2005 and 2006 Consumer Expenditure Surveys, Bureau of Labor Statistics. Esri.



Census 2010 Summary Profile

4419 Dixie Hwy, Louisville, KY, 40216
 Ring: 1 mile radius

Prepared by Mark Robbins

Latitude: 38.181341801

Longitude: -85.81569614

	2000	2010	2000-2010 Annual Rate
Population	9,850	10,049	0.20%
Households	4,408	4,366	-0.10%
Housing Units	4,597	4,690	0.20%

Population by Race	Number	Percent
Total	10,049	100.0%
Population Reporting One Race	9,830	97.8%
White	6,845	68.1%
Black	2,711	27.0%
American Indian	18	0.2%
Asian	104	1.0%
Pacific Islander	14	0.1%
Some Other Race	138	1.4%
Population Reporting Two or More Races	219	2.2%

Total Hispanic Population	386	3.8%
---------------------------	-----	------

Population by Sex	Number	Percent
Male	4,675	46.5%
Female	5,374	53.5%

Population by Age	Number	Percent
Total	10,048	100.0%
Age 0 - 4	533	5.3%
Age 5 - 9	590	5.9%
Age 10 - 14	633	6.3%
Age 15 - 19	721	7.2%
Age 20 - 24	608	6.1%
Age 25 - 29	596	5.9%
Age 30 - 34	589	5.9%
Age 35 - 39	656	6.5%
Age 40 - 44	610	6.1%
Age 45 - 49	822	8.2%
Age 50 - 54	806	8.0%
Age 55 - 59	703	7.0%
Age 60 - 64	518	5.2%
Age 65 - 69	402	4.0%
Age 70 - 74	343	3.4%
Age 75 - 79	337	3.4%
Age 80 - 84	313	3.1%
Age 85+	271	2.7%
Age 18+	7,853	78.1%
Age 65+	1,666	16.6%

Median Age by Sex and Race/Hispanic Origin	Median Age
Total Population	40.8
Male	38.9
Female	42.7
White Alone	46.5
Black Alone	32.5
American Indian Alone	35.0
Asian Alone	36.6
Pacific Islander Alone	24.0
Some Other Race Alone	24.2
Two or More Races	13.5
Hispanic Population	28.2

Data Note: Hispanic population can be of any race. Census 2010 medians are computed from reported data distributions.

Source: U.S. Census Bureau, Census 2010 Summary File 1. Esri converted Census 2000 data into 2010 geography.



Census 2010 Summary Profile

4419 Dixie Hwy, Louisville, KY, 40216
 Ring: 1 mile radius

Prepared by Mark Robbins

Latitude: 38.181341801

Longitude: -85.81569614

Households by Type		
Total	4,365	100.0%
Households with 1 Person	1,422	32.6%
Households with 2+ People	2,943	67.4%
Family Households	2,694	61.7%
Husband-wife Families	1,607	36.8%
With Own Children	530	12.1%
Other Family (No Spouse Present)	1,087	24.9%
With Own Children	544	12.5%
Nonfamily Households	249	5.7%
All Households with Children	1,293	29.6%
Multigenerational Households	205	4.7%
Unmarried Partner Households	322	7.4%
Male-female	292	6.7%
Same-sex	30	0.7%
Average Household Size	2.27	

Family Households by Size		
Total	2,695	100.0%
2 People	1,234	45.8%
3 People	672	24.9%
4 People	472	17.5%
5 People	197	7.3%
6 People	68	2.5%
7+ People	52	1.9%
Average Family Size	2.86	

Nonfamily Households by Size		
Total	1,671	100.0%
1 Person	1,422	85.1%
2 People	206	12.3%
3 People	29	1.7%
4 People	9	0.5%
5 People	4	0.2%
6 People	1	0.1%
7+ People	0	0.0%
Average Nonfamily Size	1.15	

Population by Relationship and Household Type		
Total	10,049	100.0%
In Households	9,923	98.7%
In Family Households	7,997	79.6%
Householder	2,638	26.3%
Spouse	1,577	15.7%
Child	3,066	30.5%
Other relative	430	4.3%
Nonrelative	285	2.8%
In Nonfamily Households	1,926	19.2%
In Group Quarters	126	1.3%
Institutionalized Population	126	1.3%
Noninstitutionalized Population	0	0.0%

Data Note: Households with children include any households with people under age 18, related or not. Multigenerational households are families with 3 or more parent-child relationships. Unmarried partner households are usually classified as nonfamily households unless there is another member of the household related to the householder. Multigenerational and unmarried partner households are reported only to the tract level. Esri estimated block group data, which is used to estimate polygons or non-standard geography. Average family size excludes nonrelatives.

Source: U.S. Census Bureau, Census 2010 Summary File 1.



Census 2010 Summary Profile

4419 Dixie Hwy, Louisville, KY, 40216
 Ring: 1 mile radius

Prepared by Mark Robbins

Latitude: 38.181341801

Longitude: -85.81569614

Family Households by Age of Householder		
Total	2,695	100.0%
Householder Age 15 - 44	1,020	37.8%
Householder Age 45 - 54	652	24.2%
Householder Age 55 - 64	457	17.0%
Householder Age 65 - 74	295	10.9%
Householder Age 75+	271	10.1%
Nonfamily Households by Age of Householder		
Total	1,672	100.0%
Householder Age 15 - 44	432	25.8%
Householder Age 45 - 54	353	21.1%
Householder Age 55 - 64	320	19.1%
Householder Age 65 - 74	203	12.1%
Householder Age 75+	364	21.8%
Households by Race of Householder		
Total	4,367	100.0%
Householder is White Alone	3,107	71.1%
Householder is Black Alone	1,135	26.0%
Householder is American Indian Alone	8	0.2%
Householder is Asian Alone	33	0.8%
Householder is Pacific Islander Alone	3	0.1%
Householder is Some Other Race Alone	36	0.8%
Householder is Two or More Races	45	1.0%
Households with Hispanic Householder	108	2.5%
Husband-wife Families by Race of Householder		
Total	1,606	100.0%
Householder is White Alone	1,274	79.3%
Householder is Black Alone	284	17.7%
Householder is American Indian Alone	1	0.1%
Householder is Asian Alone	15	0.9%
Householder is Pacific Islander Alone	3	0.2%
Householder is Some Other Race Alone	17	1.1%
Householder is Two or More Races	12	0.7%
Husband-wife Families with Hispanic Householder	64	4.0%
Other Families (No Spouse) by Race of Householder		
Total	1,087	100.0%
Householder is White Alone	622	57.2%
Householder is Black Alone	427	39.3%
Householder is American Indian Alone	4	0.4%
Householder is Asian Alone	12	1.1%
Householder is Pacific Islander Alone	0	0.0%
Householder is Some Other Race Alone	10	0.9%
Householder is Two or More Races	12	1.1%
Other Families with Hispanic Householder	26	2.4%
Nonfamily Households by Race of Householder		
Total	1,672	100.0%
Householder is White Alone	1,211	72.4%
Householder is Black Alone	423	25.3%
Householder is American Indian Alone	3	0.2%
Householder is Asian Alone	6	0.4%
Householder is Pacific Islander Alone	0	0.0%
Householder is Some Other Race Alone	8	0.5%
Householder is Two or More Races	21	1.3%
Nonfamily Households with Hispanic Householder	18	1.1%

Source: U.S. Census Bureau, Census 2010 Summary File 1.



Census 2010 Summary Profile

4419 Dixie Hwy, Louisville, KY, 40216
 Ring: 1 mile radius

Prepared by Mark Robbins

Latitude: 38.181341801

Longitude: -85.81569614

Total Housing Units by Occupancy

Total	4,678	100.0%
Occupied Housing Units	4,366	93.3%
Vacant Housing Units		
For Rent	136	2.9%
Rented, not Occupied	4	0.1%
For Sale Only	69	1.5%
Sold, not Occupied	6	0.1%
For Seasonal/Recreational/Occasional Use	3	0.1%
For Migrant Workers	0	0.0%
Other Vacant	94	2.0%
Total Vacancy Rate	6.9%	

Households by Tenure and Mortgage Status

Total	4,366	100.0%
Owner Occupied	2,867	65.7%
Owned with a Mortgage/Loan	1,946	44.6%
Owned Free and Clear	920	21.1%
Average Household Size	2.36	
Renter Occupied	1,499	34.3%
Average Household Size	2.11	

Owner-occupied Housing Units by Race of Householder

Total	2,867	100.0%
Householder is White Alone	2,356	82.2%
Householder is Black Alone	437	15.2%
Householder is American Indian Alone	5	0.2%
Householder is Asian Alone	25	0.9%
Householder is Pacific Islander Alone	2	0.1%
Householder is Some Other Race Alone	20	0.7%
Householder is Two or More Races	22	0.8%
Owner-occupied Housing Units with Hispanic Householder	72	2.5%

Renter-occupied Housing Units by Race of Householder

Total	1,499	100.0%
Householder is White Alone	751	50.1%
Householder is Black Alone	697	46.5%
Householder is American Indian Alone	3	0.2%
Householder is Asian Alone	8	0.5%
Householder is Pacific Islander Alone	1	0.1%
Householder is Some Other Race Alone	16	1.1%
Householder is Two or More Races	23	1.5%
Renter-occupied Housing Units with Hispanic Householder	37	2.5%

Average Household Size by Race/Hispanic Origin of Householder

Householder is White Alone	2.20
Householder is Black Alone	2.40
Householder is American Indian Alone	2.00
Householder is Asian Alone	3.24
Householder is Pacific Islander Alone	4.33
Householder is Some Other Race Alone	3.67
Householder is Two or More Races	2.29
Householder is Hispanic	3.50

Source: U.S. Census Bureau, Census 2010 Summary File 1.



Census 2010 Summary Profile

4419 Dixie Hwy, Louisville, KY, 40216
 Ring: 3 mile radius

Prepared by Mark Robbins

Latitude: 38.181341801

Longitude: -85.81569614

	2000	2010	2000-2010 Annual Rate
Population	95,594	94,698	-0.09%
Households	40,131	38,868	-0.32%
Housing Units	42,397	42,940	0.13%

Population by Race	Number	Percent
Total	94,698	100.0%
Population Reporting One Race	92,258	97.4%
White	59,520	62.9%
Black	28,488	30.1%
American Indian	268	0.3%
Asian	2,017	2.1%
Pacific Islander	63	0.1%
Some Other Race	1,902	2.0%
Population Reporting Two or More Races	2,440	2.6%

Total Hispanic Population	4,653	4.9%
---------------------------	-------	------

Population by Sex	Number	Percent
Male	45,271	47.8%
Female	49,427	52.2%

Population by Age	Number	Percent
Total	94,697	100.0%
Age 0 - 4	6,466	6.8%
Age 5 - 9	6,251	6.6%
Age 10 - 14	6,337	6.7%
Age 15 - 19	6,602	7.0%
Age 20 - 24	6,474	6.8%
Age 25 - 29	6,318	6.7%
Age 30 - 34	6,009	6.3%
Age 35 - 39	6,069	6.4%
Age 40 - 44	5,944	6.3%
Age 45 - 49	7,473	7.9%
Age 50 - 54	7,477	7.9%
Age 55 - 59	6,417	6.8%
Age 60 - 64	4,854	5.1%
Age 65 - 69	3,431	3.6%
Age 70 - 74	2,719	2.9%
Age 75 - 79	2,317	2.4%
Age 80 - 84	1,918	2.0%
Age 85+	1,622	1.7%
Age 18+	71,654	75.7%
Age 65+	12,007	12.7%

Median Age by Sex and Race/Hispanic Origin	Median Age
Total Population	37.4
Male	35.8
Female	38.8
White Alone	43.1
Black Alone	30.6
American Indian Alone	37.4
Asian Alone	31.6
Pacific Islander Alone	25.7
Some Other Race Alone	24.9
Two or More Races	14.6
Hispanic Population	28.1

Data Note: Hispanic population can be of any race. Census 2010 medians are computed from reported data distributions.

Source: U.S. Census Bureau, Census 2010 Summary File 1. Esri converted Census 2000 data into 2010 geography.



Census 2010 Summary Profile

4419 Dixie Hwy, Louisville, KY, 40216
 Ring: 3 mile radius

Prepared by Mark Robbins

Latitude: 38.181341801

Longitude: -85.81569614

Households by Type		
Total	38,868	100.0%
Households with 1 Person	12,093	31.1%
Households with 2+ People	26,775	68.9%
Family Households	24,258	62.4%
Husband-wife Families	13,790	35.5%
With Own Children	4,873	12.5%
Other Family (No Spouse Present)	10,468	26.9%
With Own Children	5,662	14.6%
Nonfamily Households	2,517	6.5%
All Households with Children	12,546	32.3%
Multigenerational Households	1,922	4.9%
Unmarried Partner Households	3,335	8.6%
Male-female	3,061	7.9%
Same-sex	274	0.7%
Average Household Size	2.42	

Family Households by Size		
Total	24,259	100.0%
2 People	10,082	41.6%
3 People	6,223	25.7%
4 People	4,479	18.5%
5 People	2,068	8.5%
6 People	852	3.5%
7+ People	555	2.3%
Average Family Size	3.02	

Nonfamily Households by Size		
Total	14,610	100.0%
1 Person	12,093	82.8%
2 People	2,116	14.5%
3 People	267	1.8%
4 People	90	0.6%
5 People	24	0.2%
6 People	16	0.1%
7+ People	4	0.0%
Average Nonfamily Size	1.21	

Population by Relationship and Household Type		
Total	94,698	100.0%
In Households	94,122	99.4%
In Family Households	76,409	80.7%
Householder	24,223	25.6%
Spouse	13,768	14.5%
Child	31,093	32.8%
Other relative	4,210	4.4%
Nonrelative	3,114	3.3%
In Nonfamily Households	17,713	18.7%
In Group Quarters	576	0.6%
Institutionalized Population	550	0.6%
Noninstitutionalized Population	26	0.0%

Data Note: Households with children include any households with people under age 18, related or not. Multigenerational households are families with 3 or more parent-child relationships. Unmarried partner households are usually classified as nonfamily households unless there is another member of the household related to the householder. Multigenerational and unmarried partner households are reported only to the tract level. Esri estimated block group data, which is used to estimate polygons or non-standard geography. Average family size excludes nonrelatives.

Source: U.S. Census Bureau, Census 2010 Summary File 1.



Census 2010 Summary Profile

4419 Dixie Hwy, Louisville, KY, 40216
Ring: 3 mile radius

Prepared by Mark Robbins

Latitude: 38.181341801

Longitude: -85.81569614

Family Households by Age of Householder		
Total	24,257	100.0%
Householder Age 15 - 44	10,336	42.6%
Householder Age 45 - 54	5,693	23.5%
Householder Age 55 - 64	4,120	17.0%
Householder Age 65 - 74	2,286	9.4%
Householder Age 75+	1,822	7.5%
Nonfamily Households by Age of Householder		
Total	14,609	100.0%
Householder Age 15 - 44	4,240	29.0%
Householder Age 45 - 54	3,140	21.5%
Householder Age 55 - 64	3,011	20.6%
Householder Age 65 - 74	1,817	12.4%
Householder Age 75+	2,401	16.4%
Households by Race of Householder		
Total	38,868	100.0%
Householder is White Alone	26,060	67.0%
Householder is Black Alone	11,075	28.5%
Householder is American Indian Alone	122	0.3%
Householder is Asian Alone	537	1.4%
Householder is Pacific Islander Alone	19	0.0%
Householder is Some Other Race Alone	513	1.3%
Householder is Two or More Races	542	1.4%
Households with Hispanic Householder	1,377	3.5%
Husband-wife Families by Race of Householder		
Total	13,791	100.0%
Householder is White Alone	10,357	75.1%
Householder is Black Alone	2,741	19.9%
Householder is American Indian Alone	40	0.3%
Householder is Asian Alone	286	2.1%
Householder is Pacific Islander Alone	10	0.1%
Householder is Some Other Race Alone	205	1.5%
Householder is Two or More Races	152	1.1%
Husband-wife Families with Hispanic Householder	585	4.2%
Other Families (No Spouse) by Race of Householder		
Total	10,468	100.0%
Householder is White Alone	5,472	52.3%
Householder is Black Alone	4,428	42.3%
Householder is American Indian Alone	34	0.3%
Householder is Asian Alone	169	1.6%
Householder is Pacific Islander Alone	6	0.1%
Householder is Some Other Race Alone	174	1.7%
Householder is Two or More Races	185	1.8%
Other Families with Hispanic Householder	418	4.0%
Nonfamily Households by Race of Householder		
Total	14,610	100.0%
Householder is White Alone	10,230	70.0%
Householder is Black Alone	3,906	26.7%
Householder is American Indian Alone	49	0.3%
Householder is Asian Alone	82	0.6%
Householder is Pacific Islander Alone	4	0.0%
Householder is Some Other Race Alone	134	0.9%
Householder is Two or More Races	205	1.4%
Nonfamily Households with Hispanic Householder	374	2.6%

Source: U.S. Census Bureau, Census 2010 Summary File 1.



Census 2010 Summary Profile

4419 Dixie Hwy, Louisville, KY, 40216
 Ring: 3 mile radius

Prepared by Mark Robbins

Latitude: 38.181341801

Longitude: -85.81569614

Total Housing Units by Occupancy

Total	42,990	100.0%
Occupied Housing Units	38,868	90.4%
Vacant Housing Units		
For Rent	1,898	4.4%
Rented, not Occupied	60	0.1%
For Sale Only	689	1.6%
Sold, not Occupied	72	0.2%
For Seasonal/Recreational/Occasional Use	64	0.1%
For Migrant Workers	0	0.0%
Other Vacant	1,339	3.1%
Total Vacancy Rate	9.5%	

Households by Tenure and Mortgage Status

Total	38,868	100.0%
Owner Occupied	23,116	59.5%
Owned with a Mortgage/Loan	16,156	41.6%
Owned Free and Clear	6,961	17.9%
Average Household Size	2.44	
Renter Occupied	15,752	40.5%
Average Household Size	2.39	

Owner-occupied Housing Units by Race of Householder

Total	23,116	100.0%
Householder is White Alone	17,863	77.3%
Householder is Black Alone	4,464	19.3%
Householder is American Indian Alone	50	0.2%
Householder is Asian Alone	336	1.5%
Householder is Pacific Islander Alone	6	0.0%
Householder is Some Other Race Alone	180	0.8%
Householder is Two or More Races	217	0.9%
Owner-occupied Housing Units with Hispanic Householder	566	2.4%

Renter-occupied Housing Units by Race of Householder

Total	15,751	100.0%
Householder is White Alone	8,197	52.0%
Householder is Black Alone	6,611	42.0%
Householder is American Indian Alone	72	0.5%
Householder is Asian Alone	201	1.3%
Householder is Pacific Islander Alone	13	0.1%
Householder is Some Other Race Alone	332	2.1%
Householder is Two or More Races	325	2.1%
Renter-occupied Housing Units with Hispanic Householder	811	5.1%

Average Household Size by Race/Hispanic Origin of Householder

Householder is White Alone	2.31
Householder is Black Alone	2.56
Householder is American Indian Alone	2.51
Householder is Asian Alone	3.63
Householder is Pacific Islander Alone	3.47
Householder is Some Other Race Alone	3.39
Householder is Two or More Races	2.70
Householder is Hispanic	3.15

Source: U.S. Census Bureau, Census 2010 Summary File 1.



Census 2010 Summary Profile

4419 Dixie Hwy, Louisville, KY, 40216
 Ring: 5 mile radius

Prepared by Mark Robbins

Latitude: 38.181341801

Longitude: -85.81569614

	2000	2010	2000-2010 Annual Rate
Population	203,446	202,568	-0.04%
Households	84,387	83,156	-0.15%
Housing Units	90,522	93,329	0.31%

Population by Race	Number	Percent
Total	202,568	100.0%
Population Reporting One Race	197,483	97.5%
White	120,773	59.6%
Black	68,493	33.8%
American Indian	572	0.3%
Asian	4,065	2.0%
Pacific Islander	149	0.1%
Some Other Race	3,431	1.7%
Population Reporting Two or More Races	5,085	2.5%
Total Hispanic Population	8,685	4.3%

Population by Sex	Number	Percent
Male	97,363	48.1%
Female	105,205	51.9%

Population by Age	Number	Percent
Total	202,571	100.0%
Age 0 - 4	13,822	6.8%
Age 5 - 9	13,246	6.5%
Age 10 - 14	13,417	6.6%
Age 15 - 19	14,862	7.3%
Age 20 - 24	16,174	8.0%
Age 25 - 29	13,989	6.9%
Age 30 - 34	13,009	6.4%
Age 35 - 39	12,677	6.3%
Age 40 - 44	12,265	6.1%
Age 45 - 49	15,151	7.5%
Age 50 - 54	15,550	7.7%
Age 55 - 59	13,201	6.5%
Age 60 - 64	10,040	5.0%
Age 65 - 69	7,049	3.5%
Age 70 - 74	5,808	2.9%
Age 75 - 79	4,952	2.4%
Age 80 - 84	3,952	2.0%
Age 85+	3,404	1.7%
Age 18+	153,902	76.0%
Age 65+	25,165	12.4%

Median Age by Sex and Race/Hispanic Origin	Median Age
Total Population	36.1
Male	34.5
Female	37.6
White Alone	40.7
Black Alone	31.5
American Indian Alone	36.3
Asian Alone	29.9
Pacific Islander Alone	26.7
Some Other Race Alone	25.0
Two or More Races	16.3
Hispanic Population	27.5

Data Note: Hispanic population can be of any race. Census 2010 medians are computed from reported data distributions.

Source: U.S. Census Bureau, Census 2010 Summary File 1. Esri converted Census 2000 data into 2010 geography.



Census 2010 Summary Profile

4419 Dixie Hwy, Louisville, KY, 40216
 Ring: 5 mile radius

Prepared by Mark Robbins

Latitude: 38.181341801

Longitude: -85.81569614

Households by Type		
Total	83,156	100.0%
Households with 1 Person	27,099	32.6%
Households with 2+ People	56,057	67.4%
Family Households	49,950	60.1%
Husband-wife Families	27,382	32.9%
With Own Children	9,707	11.7%
Other Family (No Spouse Present)	22,569	27.1%
With Own Children	12,156	14.6%
Nonfamily Households	6,107	7.3%
All Households with Children	25,941	31.2%
Multigenerational Households	4,012	4.8%
Unmarried Partner Households	6,947	8.4%
Male-female	6,337	7.6%
Same-sex	610	0.7%
Average Household Size	2.39	

Family Households by Size		
Total	49,950	100.0%
2 People	20,599	41.2%
3 People	12,886	25.8%
4 People	9,255	18.5%
5 People	4,259	8.5%
6 People	1,764	3.5%
7+ People	1,187	2.4%
Average Family Size	3.04	

Nonfamily Households by Size		
Total	33,206	100.0%
1 Person	27,099	81.6%
2 People	4,975	15.0%
3 People	744	2.2%
4 People	265	0.8%
5 People	77	0.2%
6 People	27	0.1%
7+ People	19	0.1%
Average Nonfamily Size	1.24	

Population by Relationship and Household Type		
Total	202,568	100.0%
In Households	199,045	98.3%
In Family Households	157,980	78.0%
Householder	49,929	24.6%
Spouse	27,368	13.5%
Child	65,744	32.5%
Other relative	8,717	4.3%
Nonrelative	6,222	3.1%
In Nonfamily Households	41,065	20.3%
In Group Quarters	3,523	1.7%
Institutionalized Population	1,027	0.5%
Noninstitutionalized Population	2,496	1.2%

Data Note: Households with children include any households with people under age 18, related or not. Multigenerational households are families with 3 or more parent-child relationships. Unmarried partner households are usually classified as nonfamily households unless there is another member of the household related to the householder. Multigenerational and unmarried partner households are reported only to the tract level. Esri estimated block group data, which is used to estimate polygons or non-standard geography. Average family size excludes nonrelatives.

Source: U.S. Census Bureau, Census 2010 Summary File 1.



Census 2010 Summary Profile

4419 Dixie Hwy, Louisville, KY, 40216
 Ring: 5 mile radius

Prepared by Mark Robbins

Latitude: 38.181341801

Longitude: -85.81569614

Family Households by Age of Householder		
Total		49,952 100.0%
Householder Age	15 - 44	21,621 43.3%
Householder Age	45 - 54	11,347 22.7%
Householder Age	55 - 64	8,299 16.6%
Householder Age	65 - 74	4,756 9.5%
Householder Age	75+	3,929 7.9%

Nonfamily Households by Age of Householder		
Total		33,205 100.0%
Householder Age	15 - 44	10,822 32.6%
Householder Age	45 - 54	6,785 20.4%
Householder Age	55 - 64	6,541 19.7%
Householder Age	65 - 74	3,959 11.9%
Householder Age	75+	5,098 15.4%

Households by Race of Householder		
Total		83,155 100.0%
Householder is	White Alone	52,190 62.8%
Householder is	Black Alone	27,299 32.8%
Householder is	American Indian Alone	240 0.3%
Householder is	Asian Alone	1,178 1.4%
Householder is	Pacific Islander Alone	52 0.1%
Householder is	Some Other Race Alone	955 1.1%
Householder is	Two or More Races	1,241 1.5%
Households with	Hispanic Householder	2,587 3.1%

Husband-wife Families by Race of Householder		
Total		27,380 100.0%
Householder is	White Alone	20,432 74.6%
Householder is	Black Alone	5,630 20.6%
Householder is	American Indian Alone	67 0.2%
Householder is	Asian Alone	578 2.1%
Householder is	Pacific Islander Alone	21 0.1%
Householder is	Some Other Race Alone	353 1.3%
Householder is	Two or More Races	299 1.1%
Husband-wife Families with	Hispanic Householder	1,023 3.7%

Other Families (No Spouse) by Race of Householder		
Total		22,568 100.0%
Householder is	White Alone	10,357 45.9%
Householder is	Black Alone	11,094 49.2%
Householder is	American Indian Alone	69 0.3%
Householder is	Asian Alone	291 1.3%
Householder is	Pacific Islander Alone	12 0.1%
Householder is	Some Other Race Alone	335 1.5%
Householder is	Two or More Races	410 1.8%
Other Families with	Hispanic Householder	783 3.5%

Nonfamily Households by Race of Householder		
Total		33,206 100.0%
Householder is	White Alone	21,401 64.4%
Householder is	Black Alone	10,576 31.9%
Householder is	American Indian Alone	103 0.3%
Householder is	Asian Alone	309 0.9%
Householder is	Pacific Islander Alone	18 0.1%
Householder is	Some Other Race Alone	267 0.8%
Householder is	Two or More Races	532 1.6%
Nonfamily Households with	Hispanic Householder	781 2.4%

Source: U.S. Census Bureau, Census 2010 Summary File 1.



Census 2010 Summary Profile

4419 Dixie Hwy, Louisville, KY, 40216
Ring: 5 mile radius

Prepared by Mark Robbins

Latitude: 38.181341801

Longitude: -85.81569614

Total Housing Units by Occupancy

Total	93,309	100.0%
Occupied Housing Units	83,156	89.1%
Vacant Housing Units		
For Rent	4,638	5.0%
Rented, not Occupied	146	0.2%
For Sale Only	1,428	1.5%
Sold, not Occupied	198	0.2%
For Seasonal/Recreational/Occasional Use	181	0.2%
For Migrant Workers	1	0.0%
Other Vacant	3,561	3.8%
Total Vacancy Rate	10.9%	

Households by Tenure and Mortgage Status

Total	83,156	100.0%
Owner Occupied	46,643	56.1%
Owned with a Mortgage/Loan	32,428	39.0%
Owned Free and Clear	14,215	17.1%
Average Household Size	2.43	
Renter Occupied	36,513	43.9%
Average Household Size	2.35	

Owner-occupied Housing Units by Race of Householder

Total	46,643	100.0%
Householder is White Alone	34,486	73.9%
Householder is Black Alone	10,740	23.0%
Householder is American Indian Alone	87	0.2%
Householder is Asian Alone	603	1.3%
Householder is Pacific Islander Alone	12	0.0%
Householder is Some Other Race Alone	271	0.6%
Householder is Two or More Races	444	1.0%
Owner-occupied Housing Units with Hispanic Householder	896	1.9%

Renter-occupied Housing Units by Race of Householder

Total	36,513	100.0%
Householder is White Alone	17,704	48.5%
Householder is Black Alone	16,560	45.4%
Householder is American Indian Alone	153	0.4%
Householder is Asian Alone	575	1.6%
Householder is Pacific Islander Alone	39	0.1%
Householder is Some Other Race Alone	685	1.9%
Householder is Two or More Races	797	2.2%
Renter-occupied Housing Units with Hispanic Householder	1,691	4.6%

Average Household Size by Race/Hispanic Origin of Householder

Householder is White Alone	2.30
Householder is Black Alone	2.49
Householder is American Indian Alone	2.59
Householder is Asian Alone	3.30
Householder is Pacific Islander Alone	3.15
Householder is Some Other Race Alone	3.30
Householder is Two or More Races	2.56
Householder is Hispanic	3.09

Source: U.S. Census Bureau, Census 2010 Summary File 1.



Demographic and Income Profile

4419 Dixie Hwy, Louisville, KY, 40216
 Ring: 1 mile radius

Prepared by Mark Robbins
 Latitude: 38.181341801
 Longitude: -85.81569614

Summary	2010	2011	2016
Population	10,049	10,116	10,553
Households	4,366	4,383	4,534
Families	2,694	2,712	2,769
Average Household Size	2.27	2.28	2.30
Owner Occupied Housing Units	2,867	2,801	2,930
Renter Occupied Housing Units	1,499	1,582	1,604
Median Age	40.8	40.8	41.5
Trends: 2011 - 2016 Annual Rate	Area	State	National
Population	0.85%	0.52%	0.67%
Households	0.68%	0.57%	0.71%
Families	0.42%	0.33%	0.57%
Owner HHs	0.91%	0.67%	0.91%
Median Household Income	3.27%	3.29%	2.75%

Households by Income	2011		2016	
	Number	Percent	Number	Percent
<\$15,000	752	17.2%	730	16.1%
\$15,000 - \$24,999	551	12.6%	429	9.5%
\$25,000 - \$34,999	568	13.0%	476	10.5%
\$35,000 - \$49,999	845	19.3%	781	17.2%
\$50,000 - \$74,999	829	18.9%	1,083	23.9%
\$75,000 - \$99,999	483	11.0%	609	13.4%
\$100,000 - \$149,999	275	6.3%	331	7.3%
\$150,000 - \$199,999	54	1.2%	64	1.4%
\$200,000+	25	0.6%	31	0.7%
Median Household Income	\$39,404		\$46,283	
Average Household Income	\$48,854		\$54,086	
Per Capita Income	\$21,021		\$23,085	

Population by Age	2010		2011		2016	
	Number	Percent	Number	Percent	Number	Percent
0 - 4	533	5.3%	528	5.2%	555	5.3%
5 - 9	590	5.9%	593	5.9%	610	5.8%
10 - 14	633	6.3%	637	6.3%	667	6.3%
15 - 19	721	7.2%	719	7.1%	695	6.6%
20 - 24	608	6.0%	621	6.1%	626	5.9%
25 - 34	1,185	11.8%	1,201	11.9%	1,276	12.1%
35 - 44	1,266	12.6%	1,261	12.5%	1,255	11.9%
45 - 54	1,628	16.2%	1,627	16.1%	1,544	14.6%
55 - 64	1,221	12.1%	1,238	12.2%	1,372	13.0%
65 - 74	745	7.4%	766	7.6%	967	9.2%
75 - 84	650	6.5%	651	6.4%	682	6.5%
85+	271	2.7%	272	2.7%	303	2.9%

Race and Ethnicity	2010		2011		2016	
	Number	Percent	Number	Percent	Number	Percent
White Alone	6,845	68.1%	6,858	67.8%	6,914	65.5%
Black Alone	2,711	27.0%	2,749	27.2%	2,991	28.3%
American Indian Alone	18	0.2%	18	0.2%	20	0.2%
Asian Alone	104	1.0%	105	1.0%	123	1.2%
Pacific Islander Alone	14	0.1%	14	0.1%	17	0.2%
Some Other Race Alone	138	1.4%	148	1.5%	223	2.1%
Two or More Races	219	2.2%	222	2.2%	266	2.5%
Hispanic Origin (Any Race)	386	3.8%	415	4.1%	574	5.4%

Data Note: Income is expressed in current dollars.

Source: U.S. Census Bureau, Census 2010 Data. Esri forecasts for 2011 and 2016.

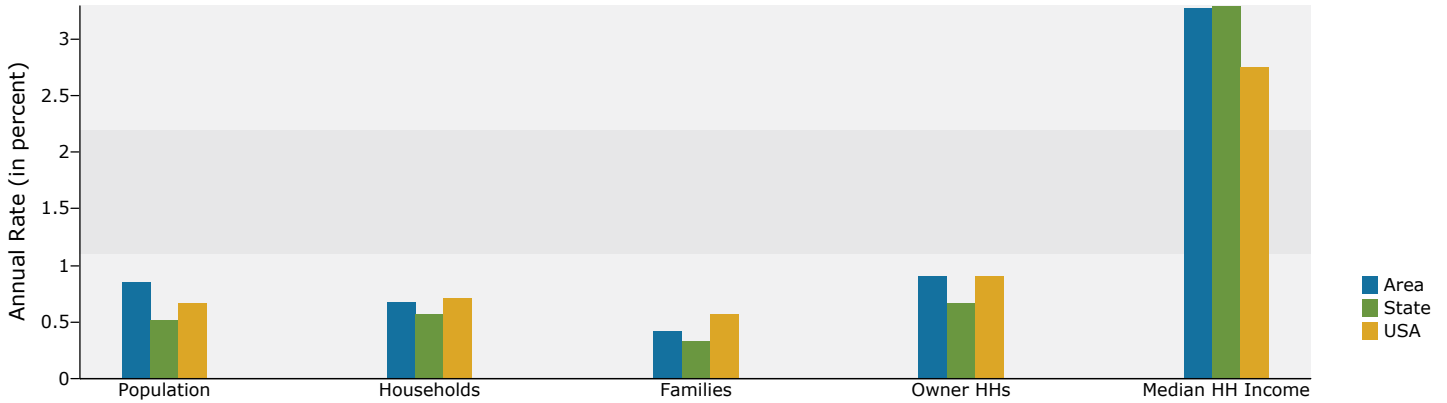


Demographic and Income Profile

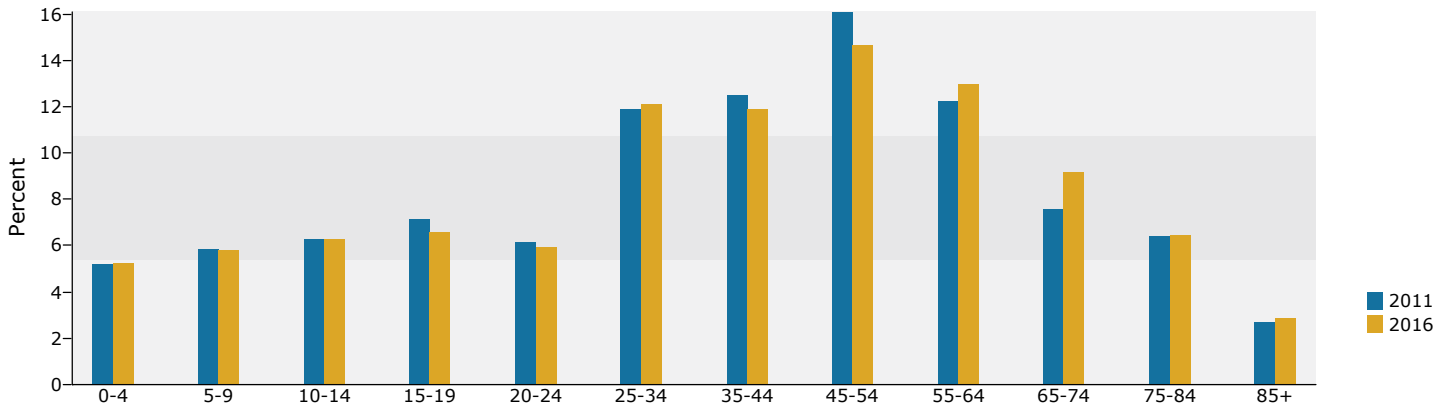
4419 Dixie Hwy, Louisville, KY, 40216
 Ring: 1 mile radius

Prepared by Mark Robbins
 Latitude: 38.181341801
 Longitude: -85.81569614

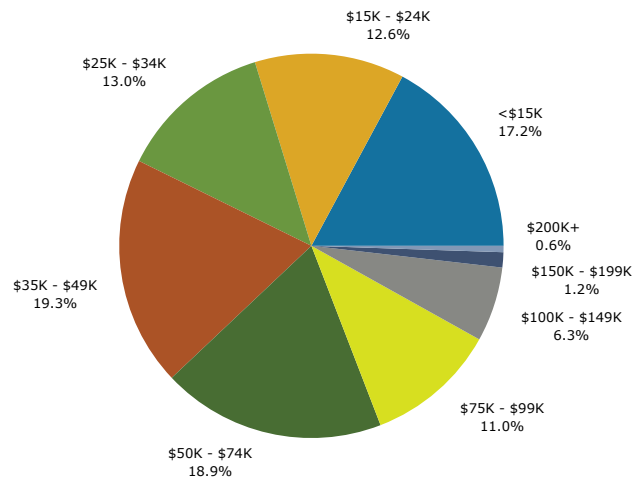
Trends 2011-2016



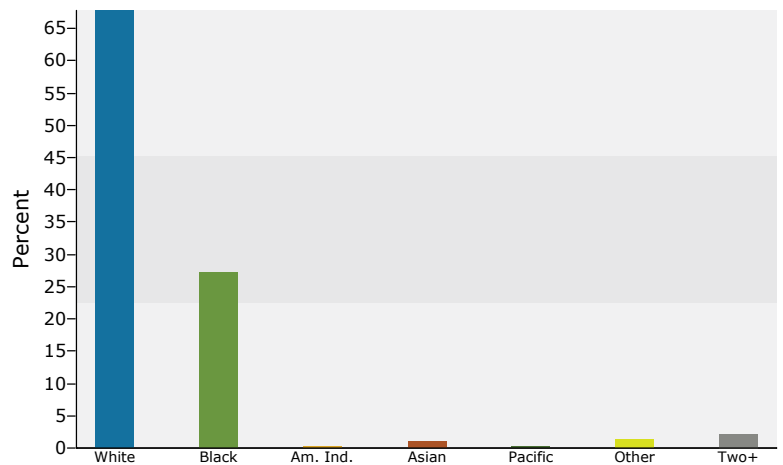
Population by Age



2011 Household Income



2011 Population by Race



2011 Percent Hispanic Origin: 4.1%

Source: U.S. Census Bureau, Census 2010 Data. Esri forecasts for 2011 and 2016.

August 09, 2012



Demographic and Income Profile

4419 Dixie Hwy, Louisville, KY, 40216
 Ring: 3 mile radius

Prepared by Mark Robbins
 Latitude: 38.181341801
 Longitude: -85.81569614

Summary	2010	2011	2016
Population	94,698	94,603	97,288
Households	38,868	38,845	39,820
Families	24,258	24,277	24,524
Average Household Size	2.42	2.42	2.43
Owner Occupied Housing Units	23,116	22,304	23,047
Renter Occupied Housing Units	15,752	16,541	16,773
Median Age	37.4	37.5	38.0

Trends: 2011 - 2016 Annual Rate	Area	State	National
Population	0.56%	0.52%	0.67%
Households	0.50%	0.57%	0.71%
Families	0.20%	0.33%	0.57%
Owner HHs	0.66%	0.67%	0.91%
Median Household Income	3.06%	3.29%	2.75%

Households by Income	2011		2016	
	Number	Percent	Number	Percent
<\$15,000	7,109	18.3%	6,943	17.4%
\$15,000 - \$24,999	5,755	14.8%	4,477	11.2%
\$25,000 - \$34,999	5,421	14.0%	4,594	11.5%
\$35,000 - \$49,999	7,067	18.2%	6,531	16.4%
\$50,000 - \$74,999	6,978	18.0%	9,237	23.2%
\$75,000 - \$99,999	3,384	8.7%	4,323	10.9%
\$100,000 - \$149,999	2,384	6.1%	2,851	7.2%
\$150,000 - \$199,999	411	1.1%	477	1.2%
\$200,000+	337	0.9%	386	1.0%

Median Household Income	\$36,729	\$42,696
Average Household Income	\$46,897	\$52,192
Per Capita Income	\$19,369	\$21,473

Population by Age	2010		2011		2016	
	Number	Percent	Number	Percent	Number	Percent
0 - 4	6,466	6.8%	6,351	6.7%	6,546	6.7%
5 - 9	6,251	6.6%	6,214	6.6%	6,328	6.5%
10 - 14	6,337	6.7%	6,320	6.7%	6,517	6.7%
15 - 19	6,602	7.0%	6,550	6.9%	6,261	6.4%
20 - 24	6,474	6.8%	6,492	6.9%	6,390	6.6%
25 - 34	12,327	13.0%	12,363	13.1%	12,938	13.3%
35 - 44	12,013	12.7%	11,918	12.6%	11,751	12.1%
45 - 54	14,950	15.8%	14,842	15.7%	13,923	14.3%
55 - 64	11,271	11.9%	11,390	12.0%	12,496	12.8%
65 - 74	6,150	6.5%	6,309	6.7%	7,889	8.1%
75 - 84	4,235	4.5%	4,233	4.5%	4,443	4.6%
85+	1,622	1.7%	1,622	1.7%	1,806	1.9%

Race and Ethnicity	2010		2011		2016	
	Number	Percent	Number	Percent	Number	Percent
White Alone	59,520	62.9%	59,258	62.6%	58,727	60.4%
Black Alone	28,488	30.1%	28,599	30.2%	30,302	31.1%
American Indian Alone	268	0.3%	265	0.3%	285	0.3%
Asian Alone	2,017	2.1%	1,997	2.1%	2,230	2.3%
Pacific Islander Alone	63	0.1%	62	0.1%	69	0.1%
Some Other Race Alone	1,902	2.0%	1,987	2.1%	2,863	2.9%
Two or More Races	2,440	2.6%	2,435	2.6%	2,812	2.9%
Hispanic Origin (Any Race)	4,653	4.9%	4,875	5.2%	6,545	6.7%

Data Note: Income is expressed in current dollars.

Source: U.S. Census Bureau, Census 2010 Data. Esri forecasts for 2011 and 2016.

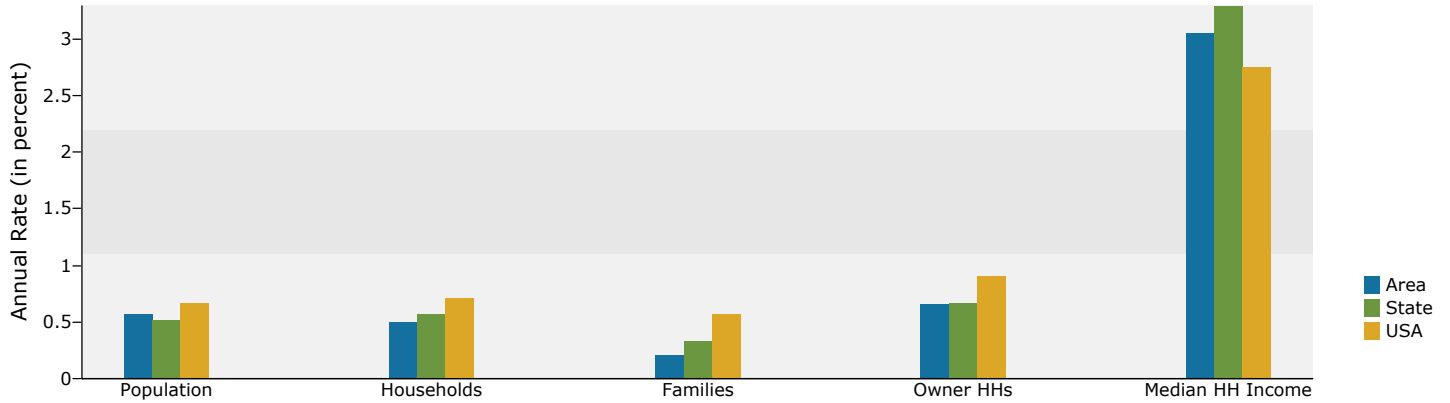


Demographic and Income Profile

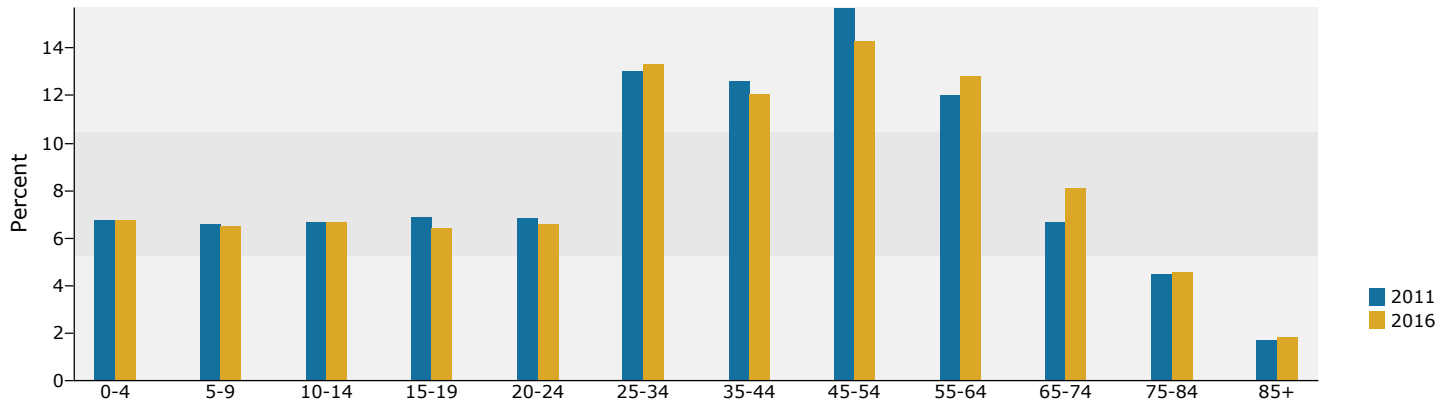
4419 Dixie Hwy, Louisville, KY, 40216
 Ring: 3 mile radius

Prepared by Mark Robbins
 Latitude: 38.181341801
 Longitude: -85.81569614

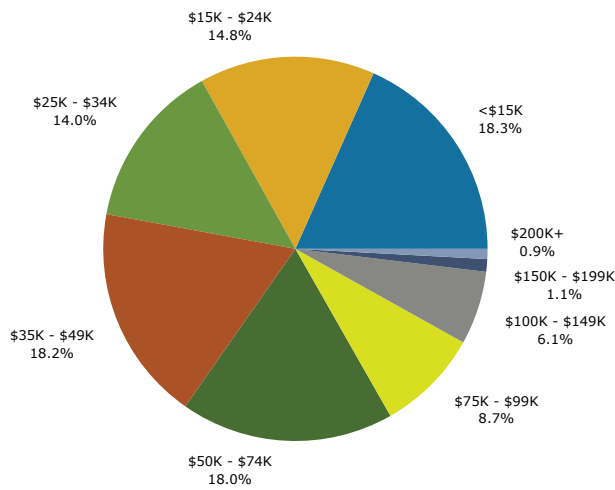
Trends 2011-2016



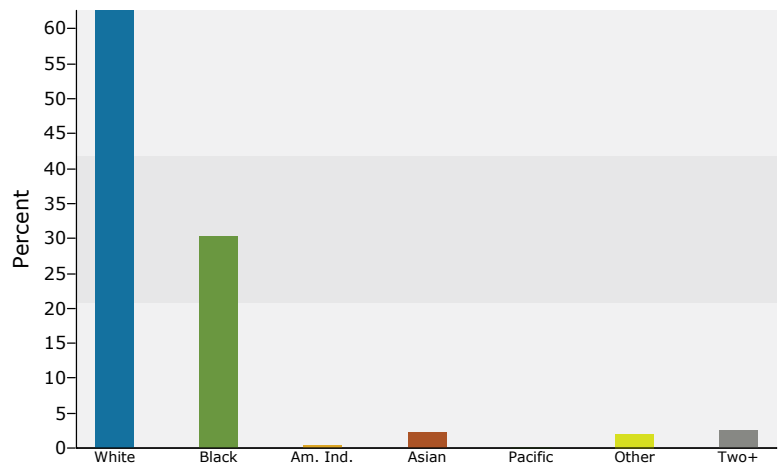
Population by Age



2011 Household Income



2011 Population by Race



2011 Percent Hispanic Origin: 5.2%

Source: U.S. Census Bureau, Census 2010 Data. Esri forecasts for 2011 and 2016.



Demographic and Income Profile

4419 Dixie Hwy, Louisville, KY, 40216
 Ring: 5 mile radius

Prepared by Mark Robbins
 Latitude: 38.181341801
 Longitude: -85.81569614

Summary	2010	2011	2016
Population	202,568	201,664	205,205
Households	83,156	82,831	84,298
Families	49,950	49,791	49,833
Average Household Size	2.39	2.39	2.39
Owner Occupied Housing Units	46,643	44,843	46,020
Renter Occupied Housing Units	36,513	37,988	38,278
Median Age	36.1	36.2	36.7
Trends: 2011 - 2016 Annual Rate	Area	State	National
Population	0.35%	0.52%	0.67%
Households	0.35%	0.57%	0.71%
Families	0.02%	0.33%	0.57%
Owner HHs	0.52%	0.67%	0.91%
Median Household Income	3.00%	3.29%	2.75%

Households by Income	2011		2016	
	Number	Percent	Number	Percent
<\$15,000	17,763	21.4%	17,380	20.6%
\$15,000 - \$24,999	12,423	15.0%	9,733	11.5%
\$25,000 - \$34,999	11,477	13.9%	9,668	11.5%
\$35,000 - \$49,999	13,676	16.5%	12,530	14.9%
\$50,000 - \$74,999	14,027	16.9%	18,422	21.9%
\$75,000 - \$99,999	7,022	8.5%	8,942	10.6%
\$100,000 - \$149,999	4,872	5.9%	5,818	6.9%
\$150,000 - \$199,999	830	1.0%	958	1.1%
\$200,000+	742	0.9%	847	1.0%
Median Household Income	\$34,715		\$40,247	
Average Household Income	\$45,237		\$50,439	
Per Capita Income	\$18,971		\$21,117	

Population by Age	2010		2011		2016	
	Number	Percent	Number	Percent	Number	Percent
0 - 4	13,822	6.8%	13,508	6.7%	13,764	6.7%
5 - 9	13,246	6.5%	13,106	6.5%	13,170	6.4%
10 - 14	13,417	6.6%	13,313	6.6%	13,539	6.6%
15 - 19	14,862	7.3%	14,712	7.3%	13,994	6.8%
20 - 24	16,174	8.0%	16,188	8.0%	15,841	7.7%
25 - 34	26,998	13.3%	26,972	13.4%	27,886	13.6%
35 - 44	24,942	12.3%	24,656	12.2%	24,050	11.7%
45 - 54	30,701	15.2%	30,370	15.1%	28,232	13.8%
55 - 64	23,241	11.5%	23,424	11.6%	25,477	12.4%
65 - 74	12,857	6.3%	13,129	6.5%	16,256	7.9%
75 - 84	8,904	4.4%	8,889	4.4%	9,264	4.5%
85+	3,404	1.7%	3,398	1.7%	3,733	1.8%

Race and Ethnicity	2010		2011		2016	
	Number	Percent	Number	Percent	Number	Percent
White Alone	120,773	59.6%	120,052	59.5%	118,544	57.8%
Black Alone	68,493	33.8%	68,263	33.9%	70,594	34.4%
American Indian Alone	572	0.3%	569	0.3%	604	0.3%
Asian Alone	4,065	2.0%	4,002	2.0%	4,430	2.2%
Pacific Islander Alone	149	0.1%	146	0.1%	164	0.1%
Some Other Race Alone	3,431	1.7%	3,560	1.8%	5,054	2.5%
Two or More Races	5,085	2.5%	5,071	2.5%	5,816	2.8%
Hispanic Origin (Any Race)	8,685	4.3%	9,037	4.5%	11,968	5.8%

Data Note: Income is expressed in current dollars.

Source: U.S. Census Bureau, Census 2010 Data. Esri forecasts for 2011 and 2016.

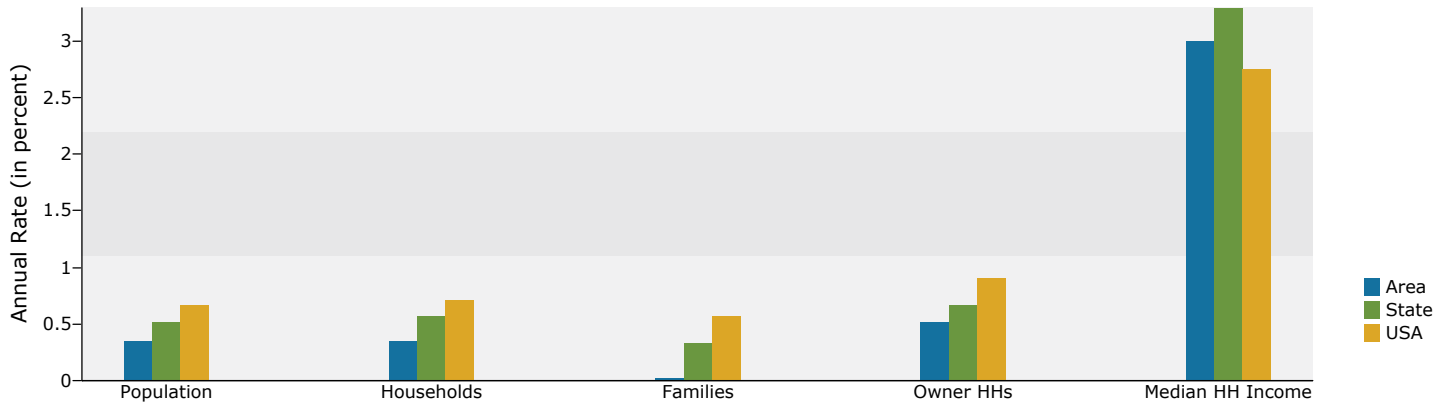


Demographic and Income Profile

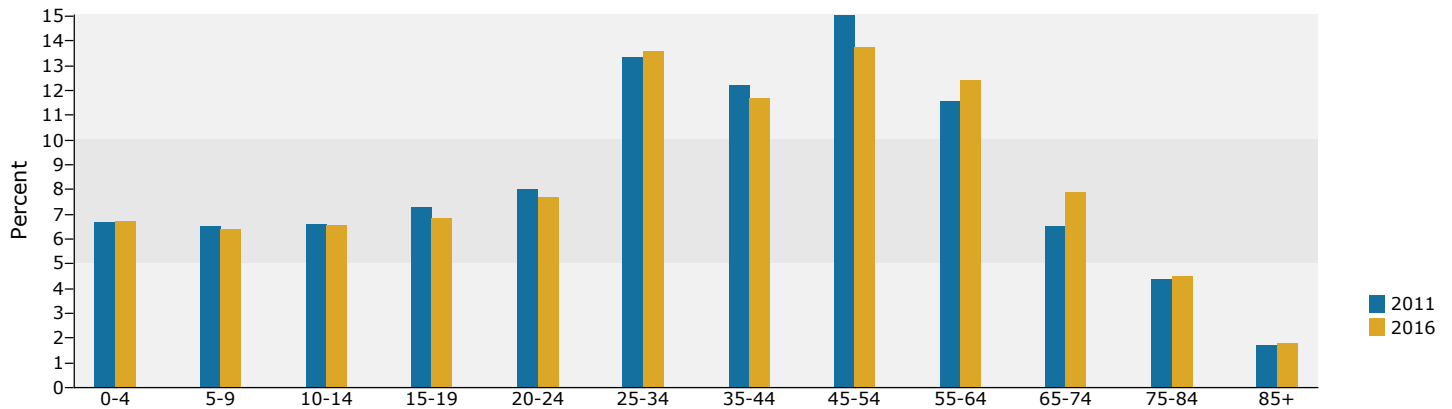
4419 Dixie Hwy, Louisville, KY, 40216
 Ring: 5 mile radius

Prepared by Mark Robbins
 Latitude: 38.181341801
 Longitude: -85.81569614

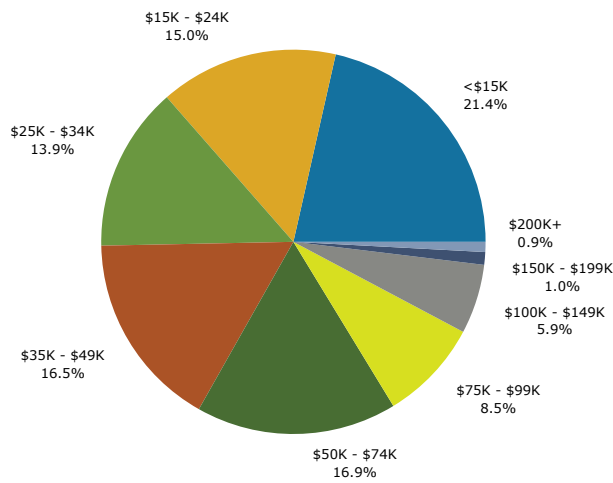
Trends 2011-2016



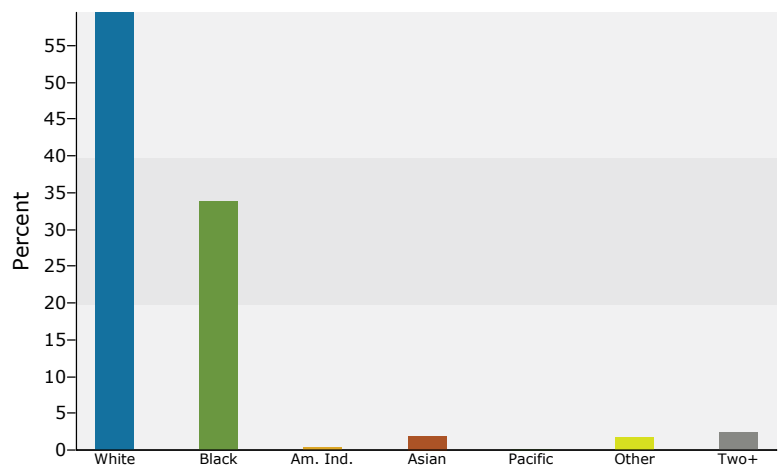
Population by Age



2011 Household Income



2011 Population by Race



2011 Percent Hispanic Origin: 4.5%

Source: U.S. Census Bureau, Census 2010 Data. Esri forecasts for 2011 and 2016.