



4,500 SF Bank Branch (No Banking Restriction)

For more information, contact:

CHRIS ROUZIE
Senior Vice President
757 596 2897
chris.rouzie@thalhimer.com

One BayPort Way, Suite 100
Newport News, VA 23606
www.thalhimer.com



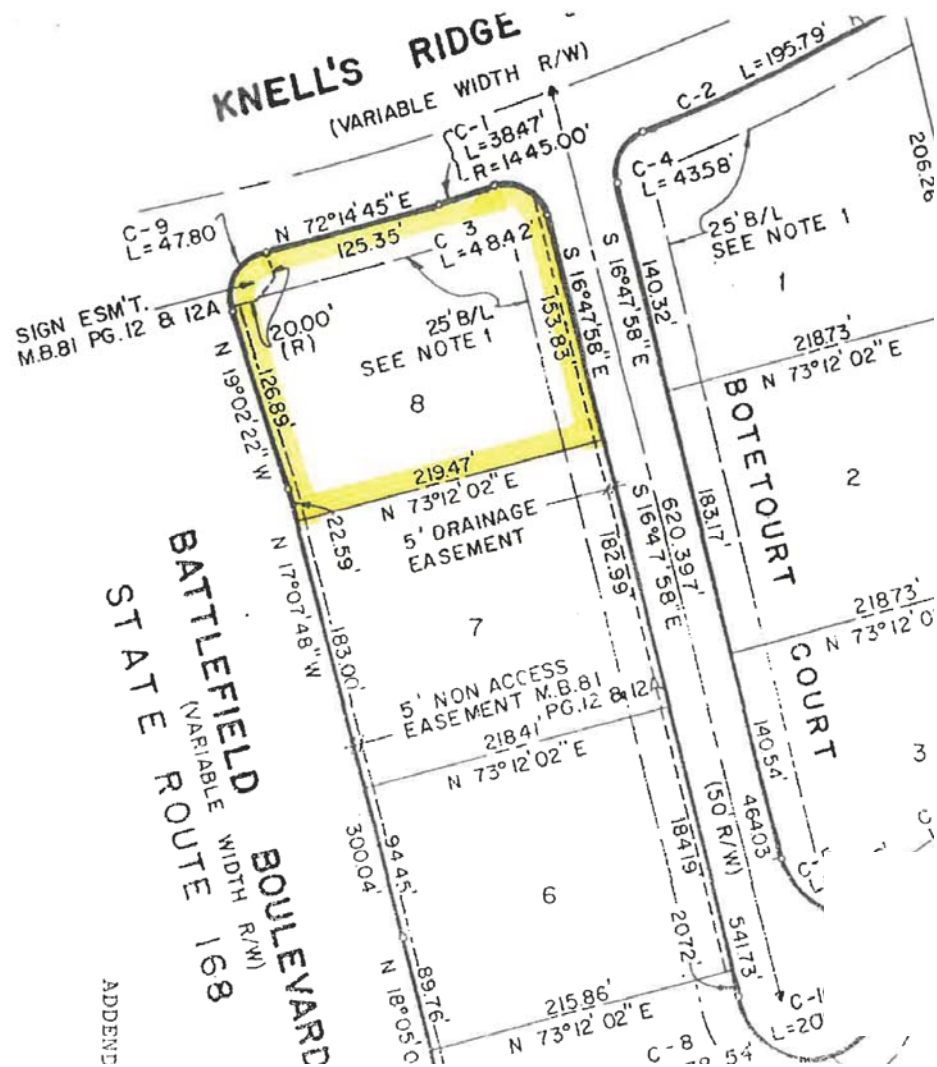
Property Features

- Building: 4,500 SF with 3 drive-thrus
- Access: Signalized intersection
- Sale Price: \$1,800,000
- Lease Rate: \$25.00/SF, NNN
- Parcel Size: .92 acres
- Parking: 39 spaces
- Zoning: O & I
- Available: December 2018

For more information, contact:

CHRIS ROUZIE
Senior Vice President
757 596 2897
chris.rouzie@thalhimer.com

One BayPort Way, Suite 100
Newport News, VA 23606
www.thalhimer.com

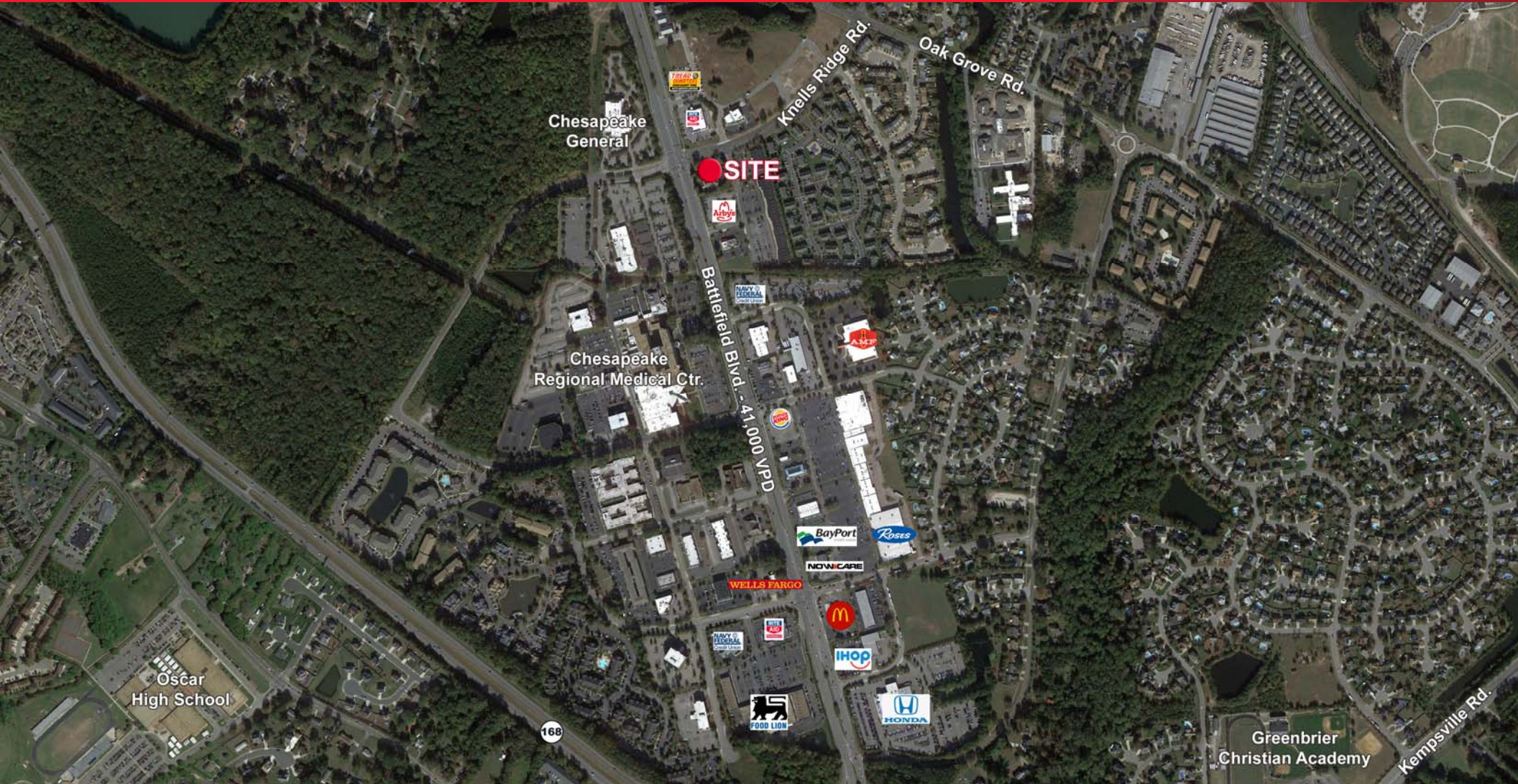


For more information, contact:

CHRIS ROUZIE
Senior Vice President
757 596 2897
chris.rouzie@thalhimer.com

One BayPort Way, Suite 100
Newport News, VA 23606
www.thalhimer.com

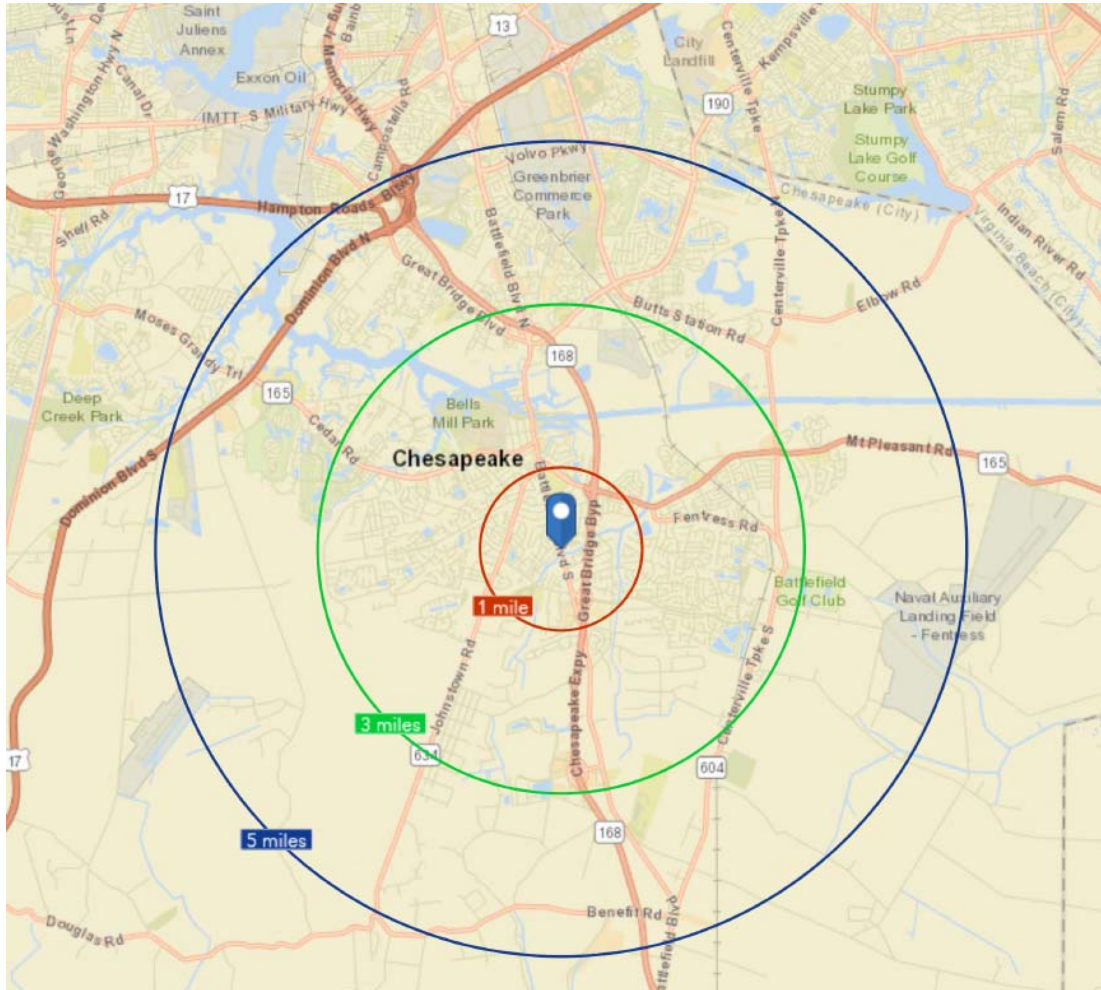
821 N. Battlefield Boulevard
Chesapeake, VA



For more information, contact:

CHRIS ROUZIE
Senior Vice President
757 596 2897
chris.rouzie@thalhimer.com

One BayPort Way, Suite 100
Newport News, VA 23606
www.thalhimer.com



Demographics

	1 Mile	3 Miles	5 Miles
POPULATION			
Population	9,045	52,176	98,289
Census Population	8,228	46,760	97,261
HOUSEHOLDS			
2018 Estimated Households	3,207	17,438	34,874
2023 Projected Households	3,401	18,484	37,326
2010 Census Households	2,936	15,746	31,115
2018 Est. Average Household Income	\$115,979	\$118,587	\$108,311
2018 Est. Median Household Income	\$94,817	\$101,195	\$90,241
2018 Est. Per Capita Income	\$41,210	\$40,236	\$39,048
BUSINESSES			
2018 Est. Total Businesses	305	1,274	2,934
2018 Est. Total Employees	2,992	15,509	43,234
RACE			
2018 Est. White	83.3%	81.2%	72.4%
2018 Est. Black	8.0%	10.8%	17.3%
2018 Est. Hispanic	5.0%	5.1%	6.0%

For more information, contact:

CHRIS ROUZIE
Senior Vice President
757 596 2897
chris.rouzie@thalhimer.com

One BayPort Way, Suite 100
Newport News, VA 23606
www.thalhimer.com